

Submit 1 Copy To Appropriate District  
Office  
District I  
1625 N. French Dr., Hobbs, NM 88240  
District II  
1301 W. Grand Ave., Artesia, NM 88210  
District III  
1000 Rio Brazos Rd., Aztec, NM 87410  
District IV  
1220 S. St. Francis Dr., Santa Fe, NM  
87505

State of New Mexico  
Energy, Minerals and Natural Resources

Form C-103  
October 13, 2009

OIL CONSERVATION DIVISION  
1220 South St. Francis Dr.  
Santa Fe, NM 87505

WELL API  
3001522955

5. Indicate Type of Lease  
STATE ☐ FEE ☐ XXX

6. State Oil & Gas Lease No.

7. Lease Name or Unit Agreement Name  
State G. Com.

8. Well Number # 1

9. OGRID Number  
246368

10. Pool name or Wildcat  
Canyon Pool # 96184

SUNDRY NOTICES AND REPORTS ON WELLS

(DO NOT USE THIS FORM FOR PROPOSALS TO DRILL OR TO DEEPEN OR PLUG BACK TO A DIFFERENT RESERVOIR. USE "APPLICATION FOR PERMIT" (FORM C-101) FOR SUCH PROPOSALS.)

1. Type of Well: Oil Well ☐ Gas Well ☐ XX Other SWD WELL

2. Name of Operator  
Basic Energy Services

3. Address of Operator  
P.O. BOX 10460 MIDLAND TEXAS 79702

4. Well Location

Unit Letter E : 1980 feet from the FNL line and 660 feet from the FWL line

Section 24 Township 19S Range 27E NMPM County EDDY

11. Elevation (Show whether DR, RKB, RT, GR, etc.)

12. Check Appropriate Box to Indicate Nature of Notice, Report or Other Data

NOTICE OF INTENTION TO:

PERFORM REMEDIAL WORK ☐ PLUG AND ABANDON ☐  
TEMPORARILY ABANDON ☐ CHANGE PLANS ☐  
PULL OR ALTER CASING ☐ MULTIPLE COMPL ☐  
DOWNHOLE COMMINGLE ☐

SUBSEQUENT REPORT OF:

REMEDIAL WORK ☒ ALTERING CASING ☐  
COMMENCE DRILLING OPNS. ☐ P AND A ☐  
CASING/CEMENT JOB ☐

OTHER: ☐

OTHER: ☐

13. Describe proposed or completed operations. (Clearly state all pertinent details, and give pertinent dates, including estimated date of starting any proposed work). SEE RULE 19.15.7.14 NMAC. For Multiple Completions: Attach wellbore diagram of proposed completion or recompletion.

Please see attachment for work done on the State G Com # 1 (Two pages)

RECEIVED

OCT 20 2010

NMOCD ARTESIA

Spud Date:

Rig Release Date:

I hereby certify that the information above is true and complete to the best of my knowledge and belief.

SIGNATURE

TITLE NM FLUID SALES MGR. DATE 10/19/10

Type or print name DAVID ALVARADO E-mail address: david.alvarado@basiconenergyservices.com PHONE: 575.746.9663

**For State Use Only**

APPROVED BY:

TITLE

DATE

11/9/10

Conditions of Approval (if any):

# BASIC ENERGY SERVICES

**STATE G COM. # 1**  
**API # 3001522955**  
**UNIT E SEC. 24 TOWN SHIP 19S RANGE 27E**

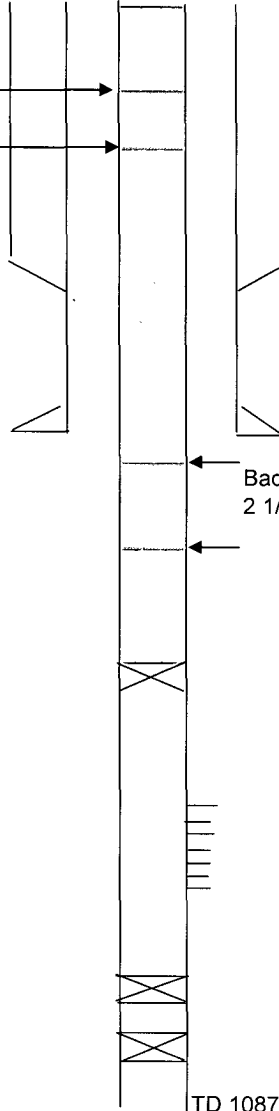
11 3/4 42# @ 325 FT, (375 SXS)

8 5/8 24# @ 2475 FT. (1200 SXS)

4 1/2 11.6 # @ 10872 FT (800 SXS)

Bad Csg. @ 601 to 724

Pump 274 sxs total circulated to Surf



Bad Csg @ 3265 to 4439

2 1/2 bbl rate squeeze total 400 (375, 25) sxs class c cmt.

TOP Pkr. @ 8703 ft 10/19/10

(4 1/2 x 2 3/8 Nickel plated Arrow set AF - 1 w / 1.78  
 profile stainless steel in compression with 10 points)

TOP Perf. 8796 ft.

BTM. Perf. 9202 ft.

TOP CMT @ 9372 ft.

CIBP @ 9407 ft.

CIBP @ 10010 ft. w / 15 ft. CMT bail dumped

TD 10872 FT

Tops in conformance Geographical Sec.

Yates	530
7 Rivers	730
Queens	1310
Grayburg	1640
San Andres	2240
Bone Springs	7868
Wolf Camp	8290
Canyon	9050
Strawn	9320
Atoka	10044
Morrow	10142
Miss	10780

13. Describe proposed or completed operations. (Clearly state all pertinent details, and give pertinent dates, including estimated date of starting any proposed work). SEE RULE 19.15.7.14 NMAC.  
For Multiple Completions: Attach wellbore diagram of proposed completion or recompletion.

9-13-10 RR to location SDFN

9-14-10 RU unit NU BOP TOH w / tbg tally packer parted. RIH with tbg. BTM Bull plug PSI Tbg. tested to 2000# good. SDFN

9-15-10 POH with 133 stands and one single 2 3/8 pc tbg.

9-16-10 Move in working string 2 3/8 N-80 tail 310 jts w/ over shot, Jars, 6 drill collars. TOH w/tbg and over shot. Lay down collars RIH 2 jts. On sand line w/ impression block TOH w / block RIH with over shot. TOH with Tbg drill collars, fish, SDFN bad weather.

9-17-10 TIH w / bit scraper pass perfs. TOH w / tbg. W/ bit, scrap. TIH with RBP set @ 8707 ft tested csg. did not test. SDFN

9-18-10 TIH with PKR set @ 4439 ft tested below good. TOH w/tbg. TIH with retrieving head and set RBP @ 4439 SDFN

9-20-10 TIH w/ tbg and PKR to 3265 ft tested good above pkr to surf. 1000 psi. tested below rate 2 1/2 BPM @ 800 psi order cmt.

9-21-10 TIH w / RBP set @ 8707 ft. tested. TOH with 2 stands Dump 2sxs sand on top pkr stuck work with fresh water free.

TOH with pkr. replace with tension type. SDFN

9-22-10 TIH with Pkr. set @ 3065 ft. bad csg. between 3265 ft – 4439 ft. wait on cmt. RU cmt. Equipment establish 2 1/2 BPM rate

Squeezed 375 sxs class C 2% calcium chloride displace with 15 bbls shut down 30 min 225 psi pump 1/2 bbl 250 psi shut down 30 min. pump 1/2 bbl 300 psi. pump 1/2 bbl. 750 psi shut in TIW ND cmt. Equip. Shut down for 5 days WOC.

9-27-10 POH w / Pkr. TIH w / 3 7/8 bit, Sub, 6 collars tag cmt. @ 3387 ft. drill to 3458 ft test neg. drill to 3765 ft. tested no test.

TOH with bit and tbg. TIH with Pkr, @ 2755 ft. call for cmt. Spot 25 sxs class C pump 1/4 bbl @ 1100 psi wait 30 min psi 1100# wait for cmt. WOC to cure till the 9-30-10 SDFN.

9-30-10 RU reverse unit TIH w / bit, sub, collars, tbg. tag Cmt. @ 3005 ft. drill down to 4439 ft circ. hole. tested good @ 500 psi.

10-1-10 POH with Bit, TIH with Packer to 1526 ft. tested below showed good set Pkr, @ 786 ft. tested Negative found hole between 601 ft and 724 ft. Call for Cmt. Spot 26 sxs Class C 2% calcium chloride POH w/ tbg. TIH 4 foot sub closed BOP displaced w / 2.56 bbls fresh PSI 1000 # WOC SDFN

10-3-10 TIH with Bit, sub, collars tag TOC @ 90 ft. drill out to 375 circulate clean test leaking Call for cmt. SDFN

10-4-10 RIH with 25 jts spot 23.5 sxs w/ fluid loss POH with tbg. squeeze thru csg. displace w / 6.5 bbls fresh psi to 1100 # WOC SDFN

10 -5-10 RIH w / bit tag Cmt. @ 90 ft. drill out to 375 ft SDFN

10-6-10 Continue drilling Cmt. From 375 ft. to 665 ft. tested good 540 psi. SDFN

10-7-10 Continued drilling Cmt. From 665 ft. to 780 ft circulate clean tested good TIH with 58 stands tag Cmt. @ 3765 ft drill btm Cmt. Squeeze out to 4220 ft. tested good @ 800 psi circulate clean SDFN

10-8-10 Psi on Csg. to 600 # tested good TIH to RBP wash sand tested showed leak in 4 1/2 csg TOH w / bit, collars, tbg.

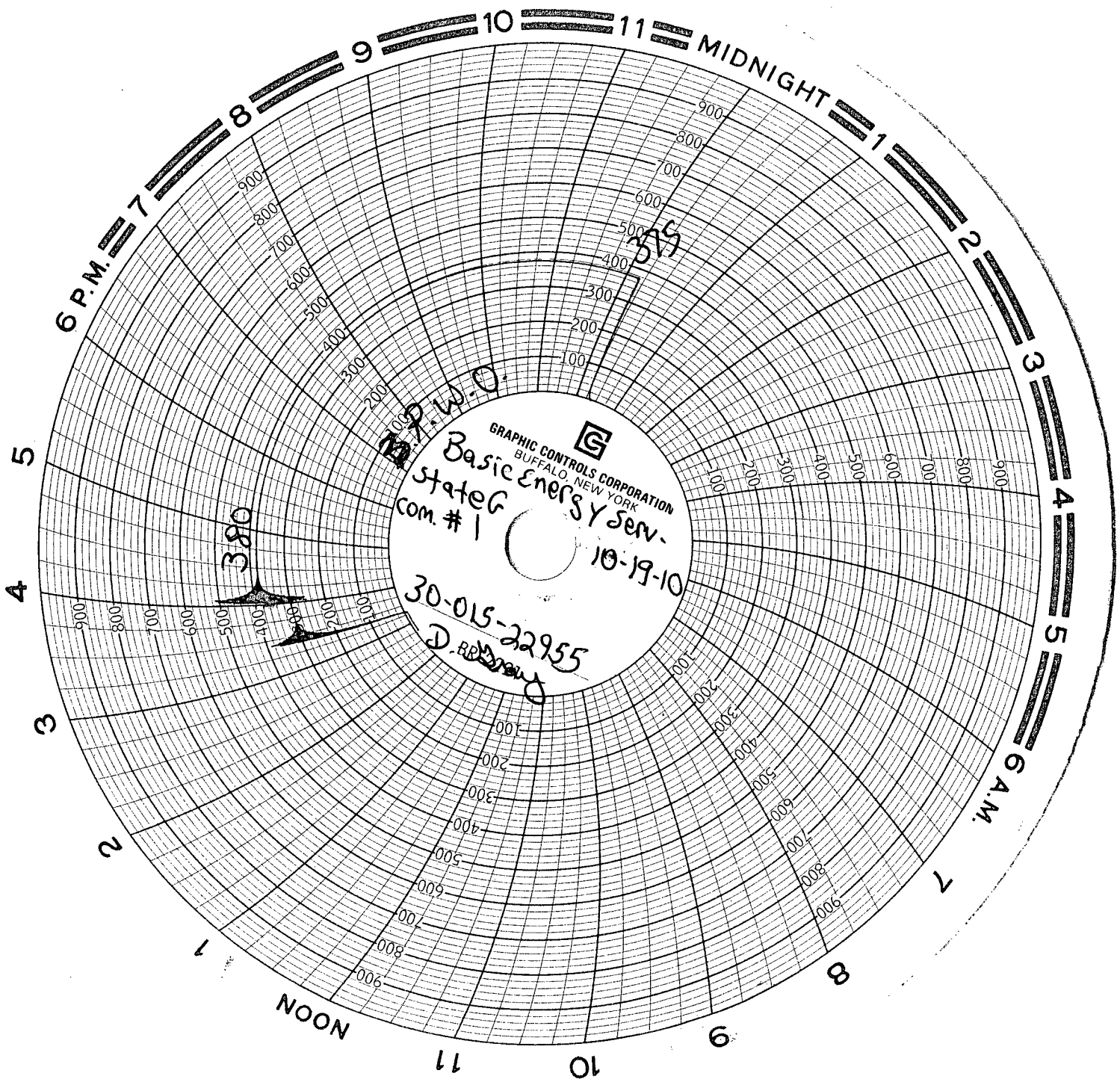
10-9-10 RIH with Pkr found leak @ 640 ft. call for Cmt. Shut down till Monday.  
10-11-10 spot 25 sxs displace thru csg. took .7 bbl psi to 1500 # WOC SDFN  
10-12-1- TIH with Tbg. and bit to 994 ft. no Cmt. Tagged . Call for wire line.  
10-13-10RU wire line with Perf guns and collar locator select 4 shots per/ft. @ 682 ft to 684 ft. Rig down Wire line RU Reverse unit circulated to surface 3 1/5 BPM rate circulate clean call for Cmt. SDFN

10-14-10 TIH with 1 jt. 4ft sub close BOP RU Cmt. Equip. Pump 200 sxs class C w / 2% calcium Chloride Circulate cmt. To surface displace cmt. To 284 ft from surface shut in w/ 900 psi on squeeze  
10-15-10 TIH with bit tag Cmt. @ 405 circulated hole clean WOC SDFN

10-16-10 RU swivel tag Cmt @ 405 drill to 465 ft. Cmt. Still Green SI w/ 500 psi till Monday.  
10-18-10 Tag Cmt. @ 465 ft drill out to 693 ft. circulated clean RIH 6 jts, circulate clean TOH w/tbg Laid down drill collars, bit sub & bit TIH with retrieving head to 8707 ft circulated clean test 460 psi one hour tested good. TOH with RBP SDFN

10-19-10 TIH with 4 1/2 x 2 3/8 Nickel Plated AF-1 w/ 1.78" profile Stainless steel 2 3/8 PC J-55 tbg Set @ 8703 ft. Load csg. 3% PKR fluid. Called OCD for MIT.

10-19-10 MIT Csg. to 380 # PSIG for 30 min. Passed and was observed by Field Supervisor Darold Gray OCD.



GRAPHIC CONTROLS CORPORATION  
BUFFALO, NEW YORK

**Basic Energy Serv.**

State Energy  
com. # 1

30-015-22955

D. B. [illegible]

10-19-10

380

375