

District I
1625 N. French Dr., Hobbs, NM 88240

District II
1301 W. Grand Avenue, Artesia, NM 88210

District III
1000 Rio Brazos Rd., Aztec, NM 87410

District IV
1220 S. St. Francis Dr., Santa Fe, NM 87505

State of New Mexico
Energy, Minerals & Natural Resources Department
OIL CONSERVATION DIVISION
1220 South St. Francis Dr.
Santa Fe, NM 87505

Form C-102
Revised October 15, 2009
Submit one copy to appropriate
District Office
☐ AMENDED REPORT

WELL LOCATION AND ACREAGE DEDICATION PLAT

¹ API Number 30-015-32514	² Pool Code	³ Pool Name CEDAR CANYON; MORROW (GAS)
⁴ Property Code	⁵ Property Name HB "2" STATE	⁶ Well Number 8
⁷ OGRID No. 6137	⁸ Operator Name DEVON ENERGY PRODUCTION COMPANY, L.P.	⁹ Elevation 3115.4

¹⁰ Surface Location

UL or lot no.	Section	Township	Range	Lot Idn	Feet from the	North/South line	Feet from the	East/West line	County
A	2	24 S	29 E		1140	NORTH	700	EAST	EDDY

¹¹ Bottom Hole Location If Different From Surface

UL or lot no.	Section	Township	Range	Lot Idn	Feet from the	North/South line	Feet from the	East/West line	County

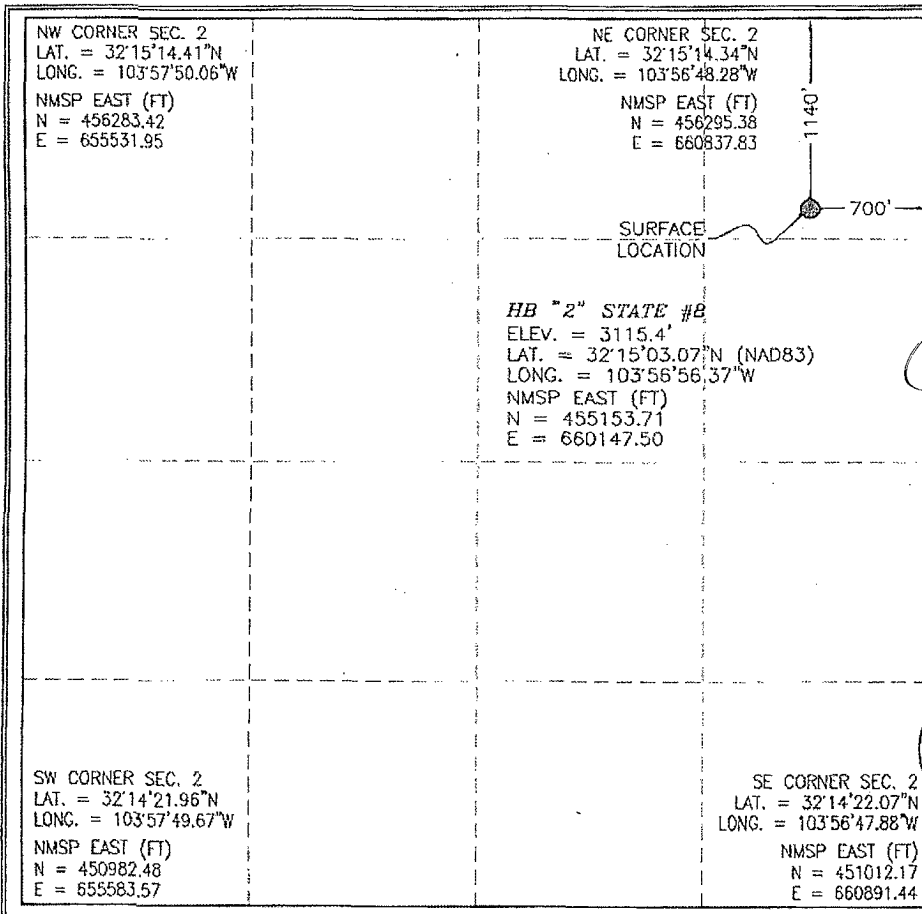
¹² Dedicated Acres 320	¹³ Joint or Infill	¹⁴ Consolidation Code	¹⁵ Order No.
---------------------------------------------	-------------------------------	----------------------------------	-------------------------

RECEIVED

DEC 01 2010

NM OGD ARTESIA

No allowable will be assigned to this completion until all interests have been consolidated or a non-standard unit has been approved by the division.



¹⁷ OPERATOR CERTIFICATION

I hereby certify that the information contained herein is true and complete to the best of my knowledge and belief, and that this organization either owns a working interest or unleased mineral interest in the land including the proposed bottom hole location or has a right to drill this well at this location pursuant to a contract with an owner of such a mineral or working interest, or to a voluntary pooling agreement or a compulsory pooling order heretofore entered by the division.

Judy A. Barnett 11/30/10
Signature Date

Printed Name
Judy A. Barnett Regulatory Analyst

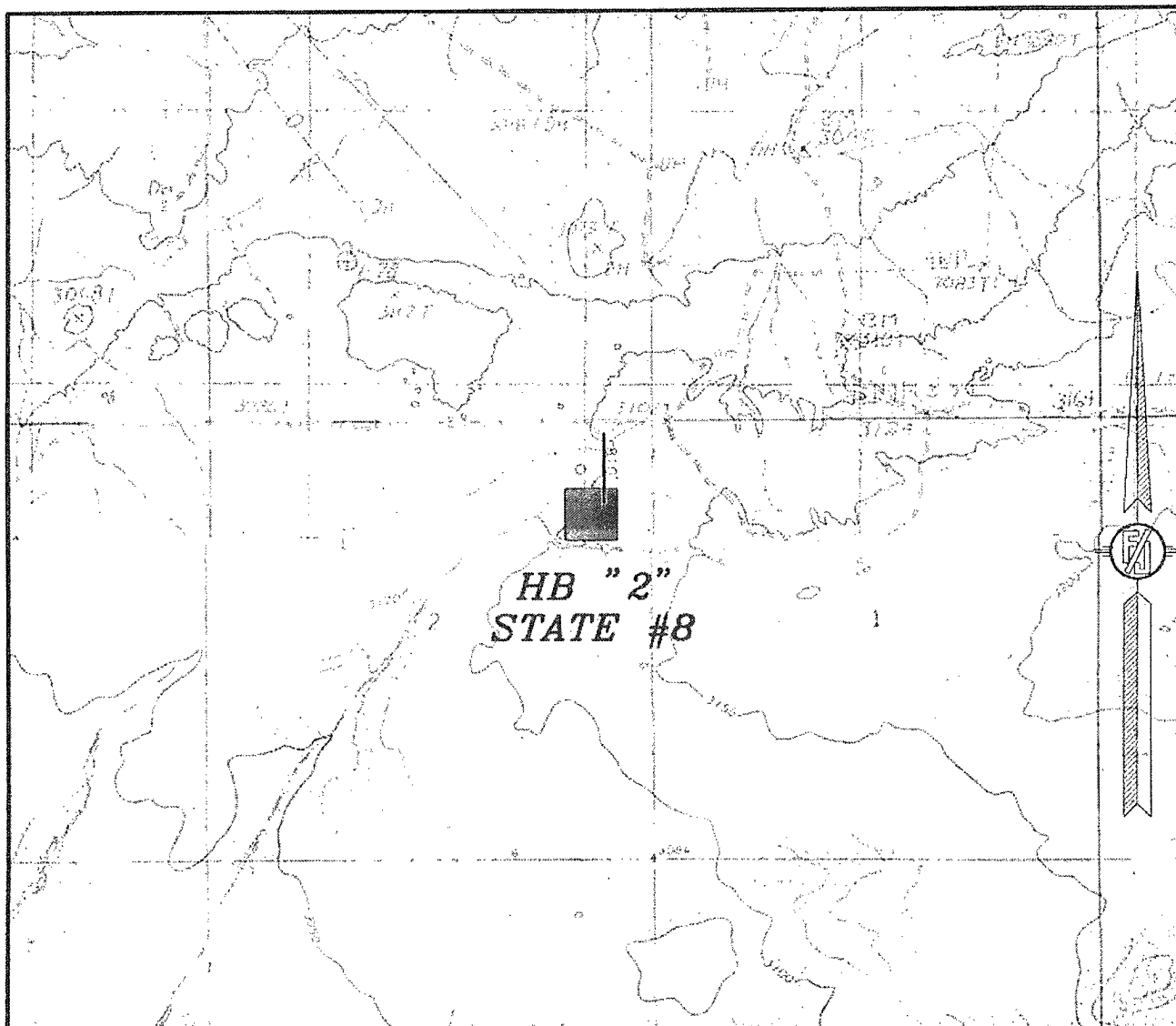
¹⁸ SURVEYOR CERTIFICATION

I hereby certify that the well location shown on this plat was plotted from field notes of actual surveys made by me or under my supervision, and that the same is true and correct to the best of my belief.

NOVEMBER 12 2010
Date of Survey
[Signature]
Signature and Seal of Professional Surveyor
Certificate Number: 1111111111 JARAMILLO, PLS 12797
SURVEY NO. 314

SECTION 2, TOWNSHIP 24 SOUTH, RANGE 29 EAST, N.M.P.M.
EDDY COUNTY, STATE OF NEW MEXICO

LOCATION VERIFICATION MAP



CONTOUR INTERVAL:
REMUDA BASIN
PIERICE CANYON

NOT TO SCALE

DEVON ENERGY PRODUCTION COMPANY, L.P.

HB "2" STATE #8

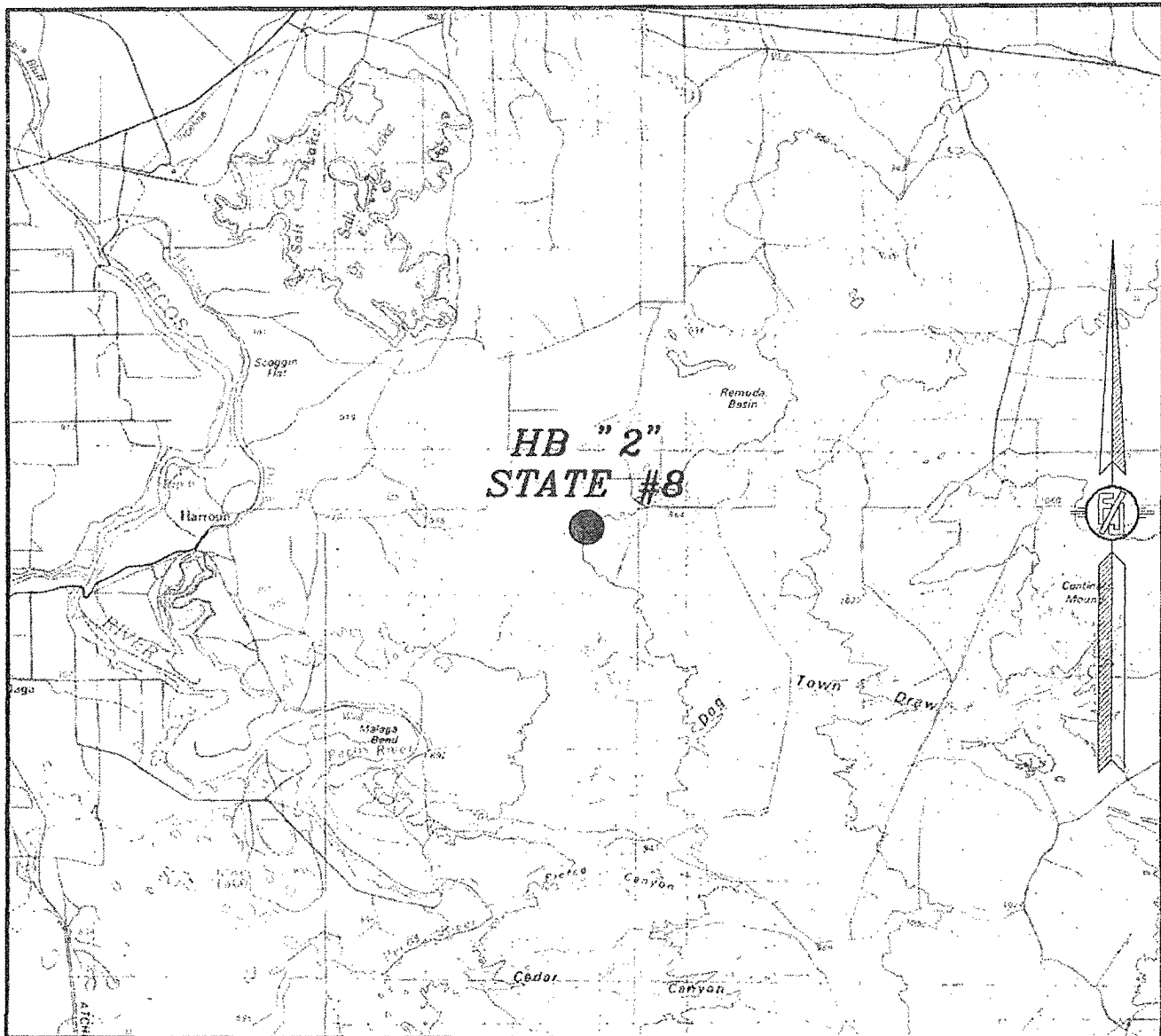
LOCATED 1140 FT. FROM THE NORTH LINE
AND 700 FT. FROM THE EAST LINE OF
SECTION 2, TOWNSHIP 24 SOUTH,
RANGE 29 EAST, N.M.P.M.
EDDY COUNTY, STATE OF NEW MEXICO

NOVEMBER 12, 2010

SURVEY NO. 314

MADRON SURVEYING, INC. 301 SOUTH CANAL CARLSBAD, NEW MEXICO
(505) 837-5630

SECTION 2, TOWNSHIP 24 SOUTH, RANGE 29 EAST, N.M.P.M.
EDDY COUNTY, STATE OF NEW MEXICO
VICINITY MAP



NOT TO SCALE

DEVON ENERGY PRODUCTION COMPANY, L.P.

HB "2" STATE #8

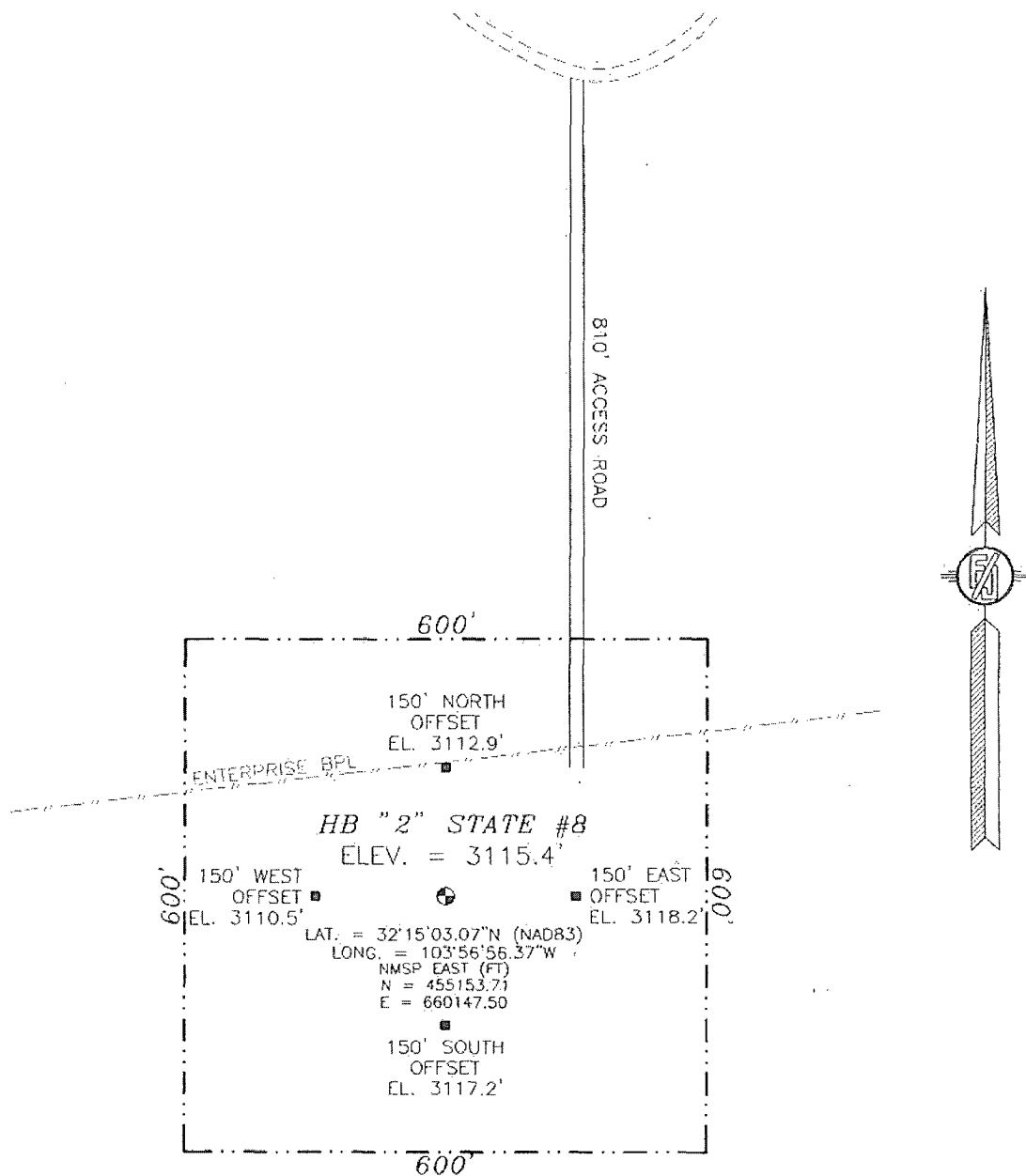
LOCATED 1140 FT. FROM THE NORTH LINE
AND 700 FT. FROM THE EAST LINE OF
SECTION 2, TOWNSHIP 24 SOUTH,
RANGE 29 EAST, N.M.P.M.
EDDY COUNTY, STATE OF NEW MEXICO

NOVEMBER 12, 2010

SURVEY NO. 314

MADRON SURVEYING, INC. 351 SOUTH CANAL CARLSBAD, NEW MEXICO
10731 297 5632

SECTION 2, TOWNSHIP 24 SOUTH, RANGE 29 EAST, N.M.P.M.
EDDY COUNTY, STATE OF NEW MEXICO



020 100 200 400

SCALE 1" = 200'

DIRECTIONS TO LOCATION

FROM STATE HWY. 128 AND RAWHIDE (PAVED). GO SOUTH ON RAWHIDE 4.1 MILES, TURN RIGHT ON CALICHE LEASE ROAD AND GO WEST 3.6 MILES TO A "Y". STAY LEFT AND GO SOUTHEAST 1.0 MILES BEND RIGHT AND GO SOUTH 1.4 MILES BEND LEFT AND GO EAST 0.8 MILES BEND RIGHT AND GO SOUTHWEST 0.1 MILE. TURN LEFT AND GO EAST 0.65 MILES TO A ROAD SURVEY, FOLLOW FLAGS SOUTH 810' TO THE NORTHEAST PAD CORNER FOR THIS SITE.

DEVON ENERGY PRODUCTION COMPANY, L.P.

HB "2" STATE #8

LOCATED 1140 FT. FROM THE NORTH LINE
AND 700 FT. FROM THE EAST LINE OF
SECTION 2, TOWNSHIP 24 SOUTH,
RANGE 29 EAST, N.M.P.M.
EDDY COUNTY, STATE OF NEW MEXICO

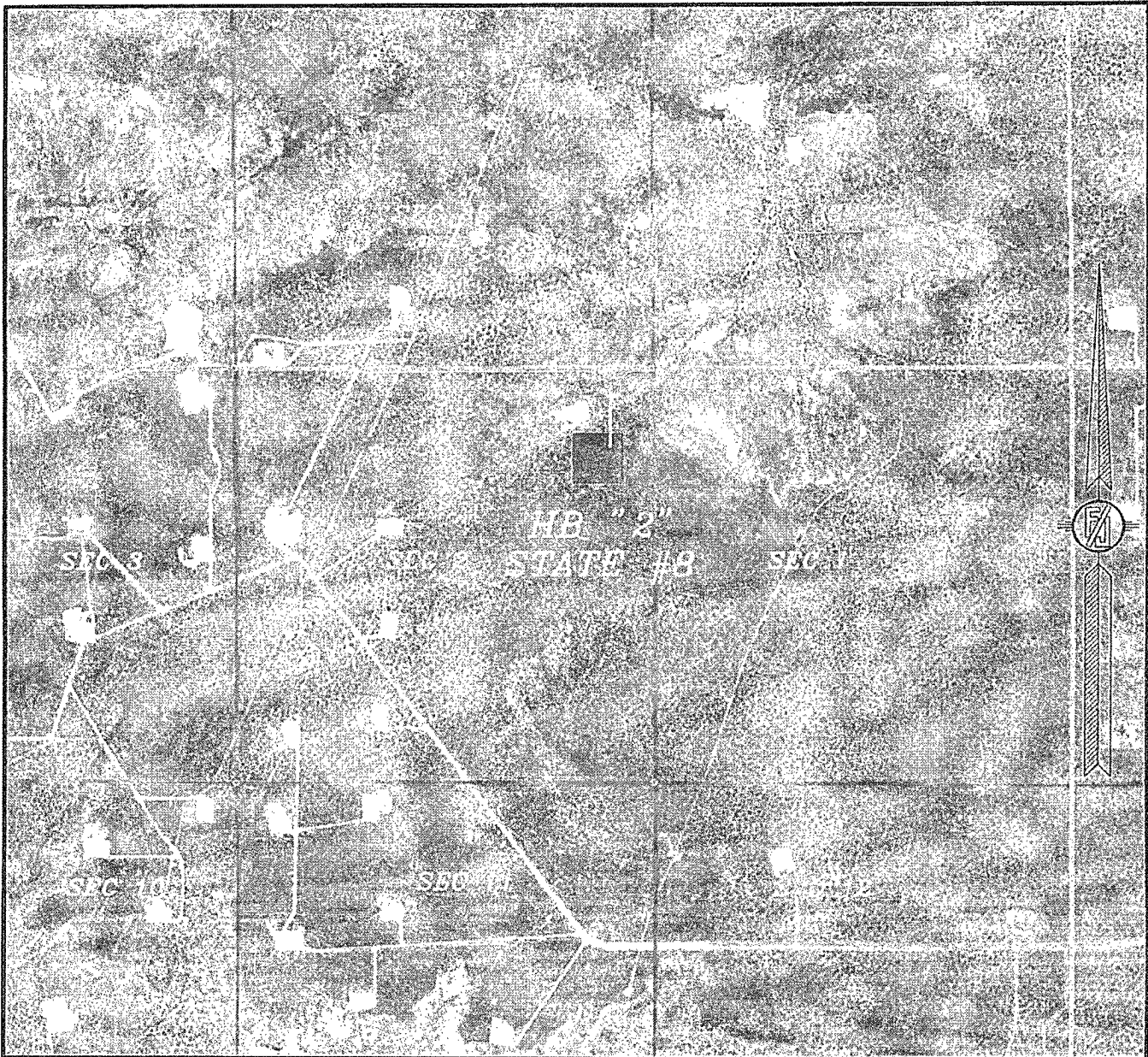
NOVEMBER 12, 2010

SURVEY NO. 314

MADRON SURVEYING, INC. 331 SOUTH CANAL CARLSBAD, NEW MEXICO
(505) 887-5836

SECTION 2, TOWNSHIP 24 SOUTH, RANGE 29 EAST, N.M.P.M.
EDDY COUNTY, STATE OF NEW MEXICO

AERIAL PHOTO



NOT TO SCALE
AERIAL PHOTO:
GOOGLE EARTH
USDA - AUG, 2009

DEVON ENERGY PRODUCTION COMPANY, L.P.

HB "2" STATE #8

LOCATED 1140 FT. FROM THE NORTH LINE
AND 700 FT. FROM THE EAST LINE OF
SECTION 2, TOWNSHIP 24 SOUTH,
RANGE 29 EAST, N.M.P.M.
EDDY COUNTY, STATE OF NEW MEXICO

NOVEMBER 12, 2010

SURVEY NO. 314

MADRON SURVEYING, INC. 301 SOUTH CANAL CARLSBAD, NEW MEXICO
(575) 557-5830