

District I
1625 N. French Dr., Hobbs, NM 88240
District II
1301 W. Grand Avenue, Artesia, NM 88210
District III
1000 Rio Brazos Road, Aztec, NM 87410
District IV
1220 S. Francis Dr., Santa Fe, NM 87505

State of New Mexico
Energy Minerals and Natural Resources

Oil Conservation Division
1220 S. St. Francis Dr.
Santa Fe, NM 87505

Form C-101
Revised March 17, 1999

Submit to appropriate District Office
State Lease - 6 Copies
Fee Lease - 5 Copies

☐ AMENDED REPORT

APPLICATION FOR PERMIT TO DRILL, RE-ENTER, DEEPEEN, PLUGBACK, OR ADD A ZONE

¹ Operator Name and Address POGO PRODUCING COMPANY P.O. BOX 10340 MIDLAND, TEXAS 79702-7340		² OGRID Number 17891
		³ API Number 30 - 015-32736
⁴ Property Code 27534	⁵ Property Name McMILLIAN "24" STATE	⁶ Well No. 4

⁷ Surface Location

UL or lot no.	Section	Township	Range	Lot Idn	Feet from the	North/South line	Feet from the	East/West line	County
N	24	20S	26E		660'	SOUTH	1650'	WEST	EDDY

⁸ Proposed Bottom Hole Location If Different From Surface

UL or lot no.	Section	Township	Range	Lot Idn	Feet from the	North/South line	Feet from the	East/West line	County

⁹ Proposed Pool 1

McMILLIAN MORROW GAS (81240)

¹⁰ Proposed Pool 2

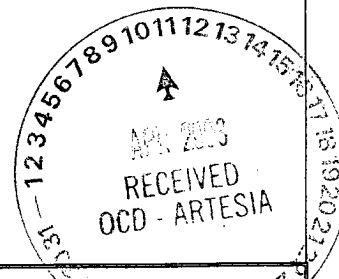
¹¹ Work Type Code N	¹² Well Type Code G	¹³ Cable/Rotary ROTARY	¹⁴ Lease Type Code S	¹⁵ Ground Level Elevation 3289
¹⁶ Multiple NO	¹⁷ Proposed Depth 10,700'	¹⁸ Formation MORROW	¹⁹ Contractor UNKNOWN	²⁰ Spud Date WHEN APPROVED

²¹ Proposed Casing and Cement Program

Hole Size	Casing Size	Casing weight/foot	Setting Depth	Sacks of Cement	Estimated TOC
25"	20"	Conductor	40'	Redi-mix	Surface
17½"	13 3/8"	48	500'	550 Sx.	Surface
12½"	9 5/8"	40.5	3000'	1200 Sx.	Surface
* 8½", 7 7/8"	5½"	17	10,700'	1000 Sx.	2000' FS
6 1/8"	5"	18	8800-10,700'	200 Sx.	Top of Liner

²² Describe the proposed program. If this application is to DEEPEEN or PLUG BACK, give the data on the present productive zone and proposed new productive zone.
Describe the blowout prevention program, if any. Use additional sheets if necessary.

SEE ATTACHED SHEET



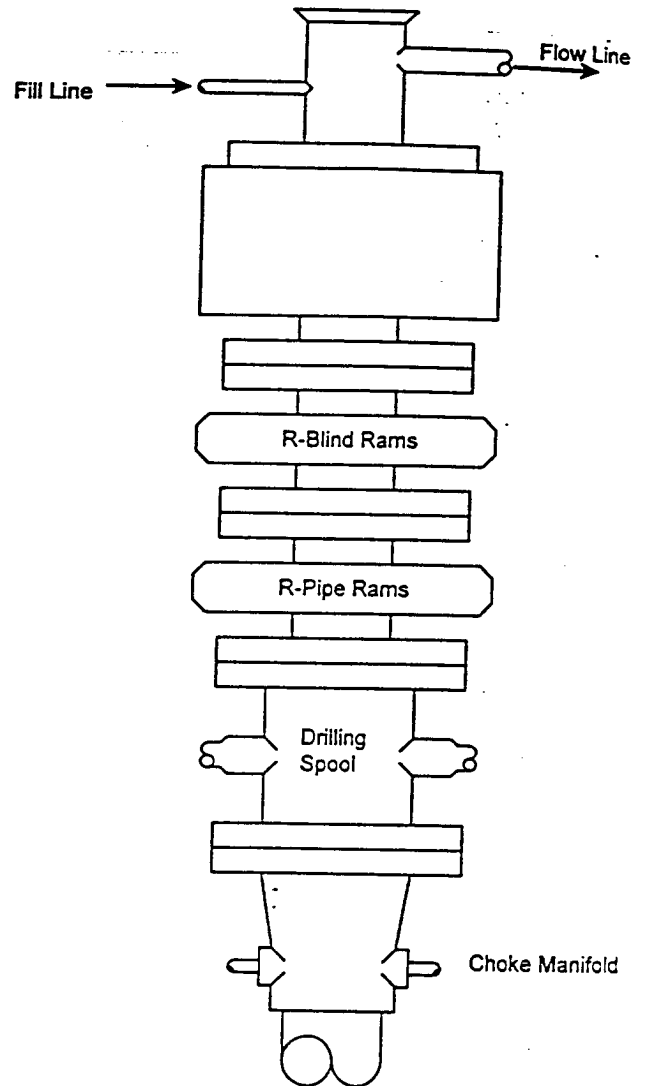
²³ I hereby certify that the information given above is true and complete to the best of my knowledge and belief. Signature: <i>Joe T. Janica</i> Printed name: Joe T. Janica Title: Agent Date: 04/10/03		Oil Conservation Division Approved by: ORIGINAL SIGNED BY TIM W. GUM Title: DISTRICT II SUPERVISOR Approval Date: APR 14 2003 Expiration Date: APR 14 2004 Conditions of Approval: Attached <input type="checkbox"/>
--	--	---

POGO PRODUCING COMPANY
McMILLIAN "24" STATE # 4
UNIT "N" SECTION 24
T20S-R26E EDDY CO. NM

1. Drill 25" hole to 40'. Set 40' of 20" conductor and cement to surface with Redi-Mix.
2. Drill 17½" hole to 500'. Run and set 500' of 13 3/8" 48# H-40 ST&C casing. Cement with 550 Sx. of Class "C" cement + 2% CaCl, + ¼# Flocele/Sx. circulate cement to surface.
3. Drill 12¼" hole to 3000'. Run and set 3000' of 9 5/8" 40.5# J-55 ST&C casing. Cement with 1200 Sx. of Class "C" cement + 2% CaCl, + ¼# Flocele/Sx. circulate cement to surface.
- *4. Drill 8½" hole to 9000' or through the Cisco, if no problems with lost circulation occurs, then reduce hole to 7 7/8" and drill to TD of 10,700'. Run and set 10,700' of 5½" casing as follows: 2700' of 5½" 17# N-80 LT&C, 6000' of 5½" 17# J-55 LT&C, 2000' of 5½" 17# N-80 LT&C. Set stage tools at 9100' & 6000', cement with 1000 Sx. of Class "H" cement + additives, estimate top of cement 2000' from surface.
- *5. If chronic lost circulation is encountered in the Cisco at 9000'±, set up and run 7" 26# J-55 LT&C casing and cement in place. Drill out with a 6 1/8" bit to a TD of 10,700' and run 1900' of 5" 18# L-80 LT&C liner and cement in place.

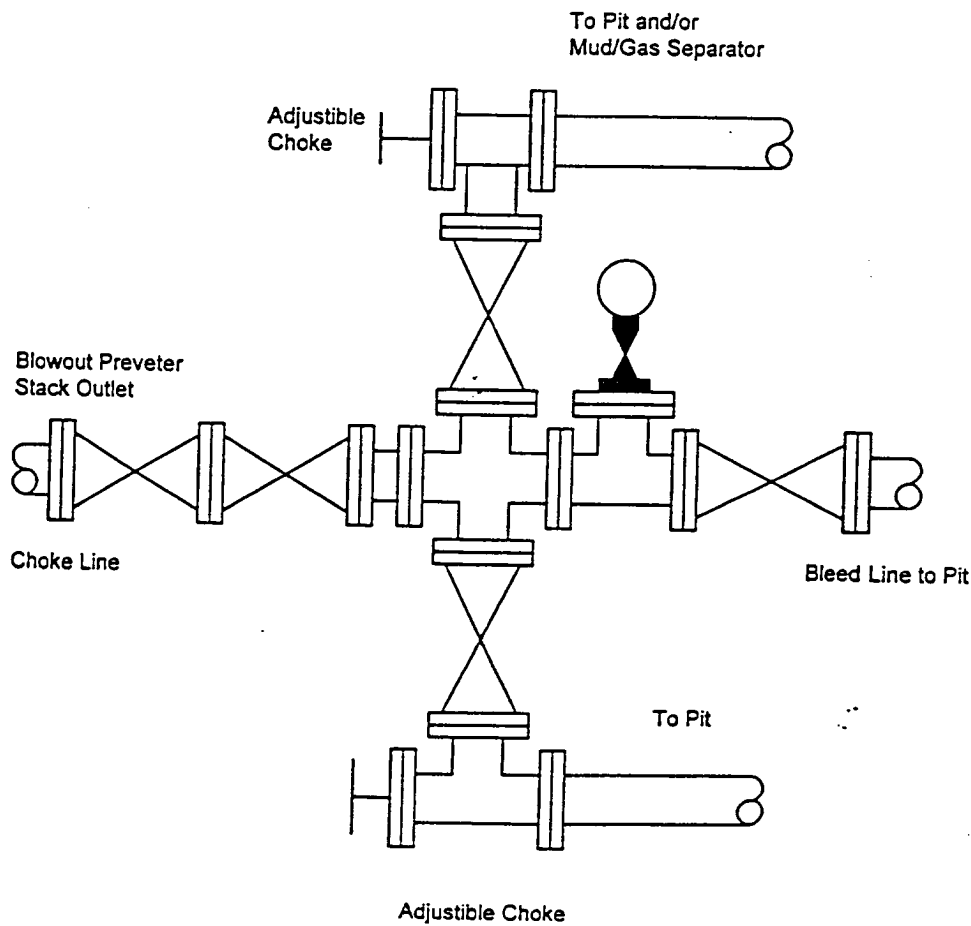
BLOWOUT PREVENTER SYSTEM

5000 PSI



Type 1500 SERIES
5000 psi WP

Choke Manifold Assembly for 5M WP System



DISTRICT I
P.O. Box 1980, Hobbs, NM 88241-1980

DISTRICT II
P.O. Drawer DD, Artesia, NM 88211-0718

DISTRICT III
1000 Rio Brazos Rd., Aztec, NM 87410

DISTRICT IV
P.O. BOX 2088, SANTA FE, N.M. 87504-2088

State of New Mexico

Energy, Minerals and Natural Resources Department

OIL CONSERVATION DIVISION

P.O. Box 2088
Santa Fe, New Mexico 87504-2088

Form C-102
Revised February 10, 1994
Submit to Appropriate District Office
State Lease - 4 Copies
Fee Lease - 3 Copies

WELL LOCATION AND ACREAGE DEDICATION PLAT

☐ AMENDED REPORT

API Number		Pool Code	Pool Name	
		881240	McMILLIAN-MORROW GAS	
Property Code	Property Name		Well Number	
27535	McMILLAN 24 STATE		4	
OGRID No.	Operator Name		Elevation	
17891	POGO PRODUCING COMPANY		3289'	

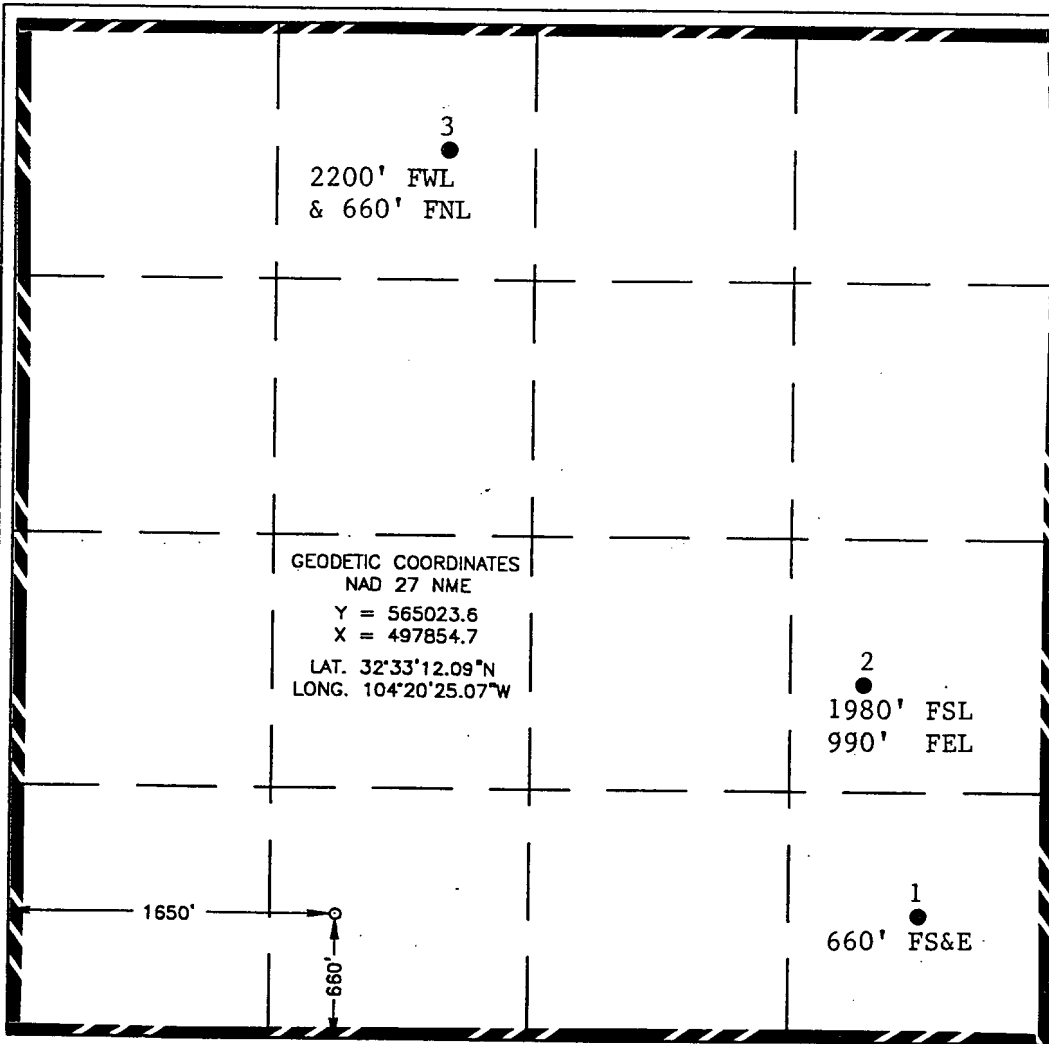
Surface Location

UL or lot No.	Section	Township	Range	Lot Idn	Feet from the	North/South line	Feet from the	East/West line	County
N	24	20-S	26-E		660'	SOUTH	1650'	WEST	EDDY

Bottom Hole Location If Different From Surface

UL or lot No.	Section	Township	Range	Lot Idn	Feet from the	North/South line	Feet from the	East/West line	County
Dedicated Acres		Joint or Infill		Consolidation Code		Order No.			
640									

NO ALLOWABLE WILL BE ASSIGNED TO THIS COMPLETION UNTIL ALL INTERESTS HAVE BEEN CONSOLIDATED
OR A NON-STANDARD UNIT HAS BEEN APPROVED BY THE DIVISION



OPERATOR CERTIFICATION

I hereby certify that the information
contained herein is true and complete to the
best of my knowledge and belief.

Signature

Joe T. Janica

Printed Name

Agent

Title

04/10/03

Date

SURVEYOR CERTIFICATION

I hereby certify that the well location shown
on this plat was plotted from field notes of
actual surveys made by me or under my
supervision, and that the same is true and
correct to the best of my belief.

April 09, 2003

Date Surveyed

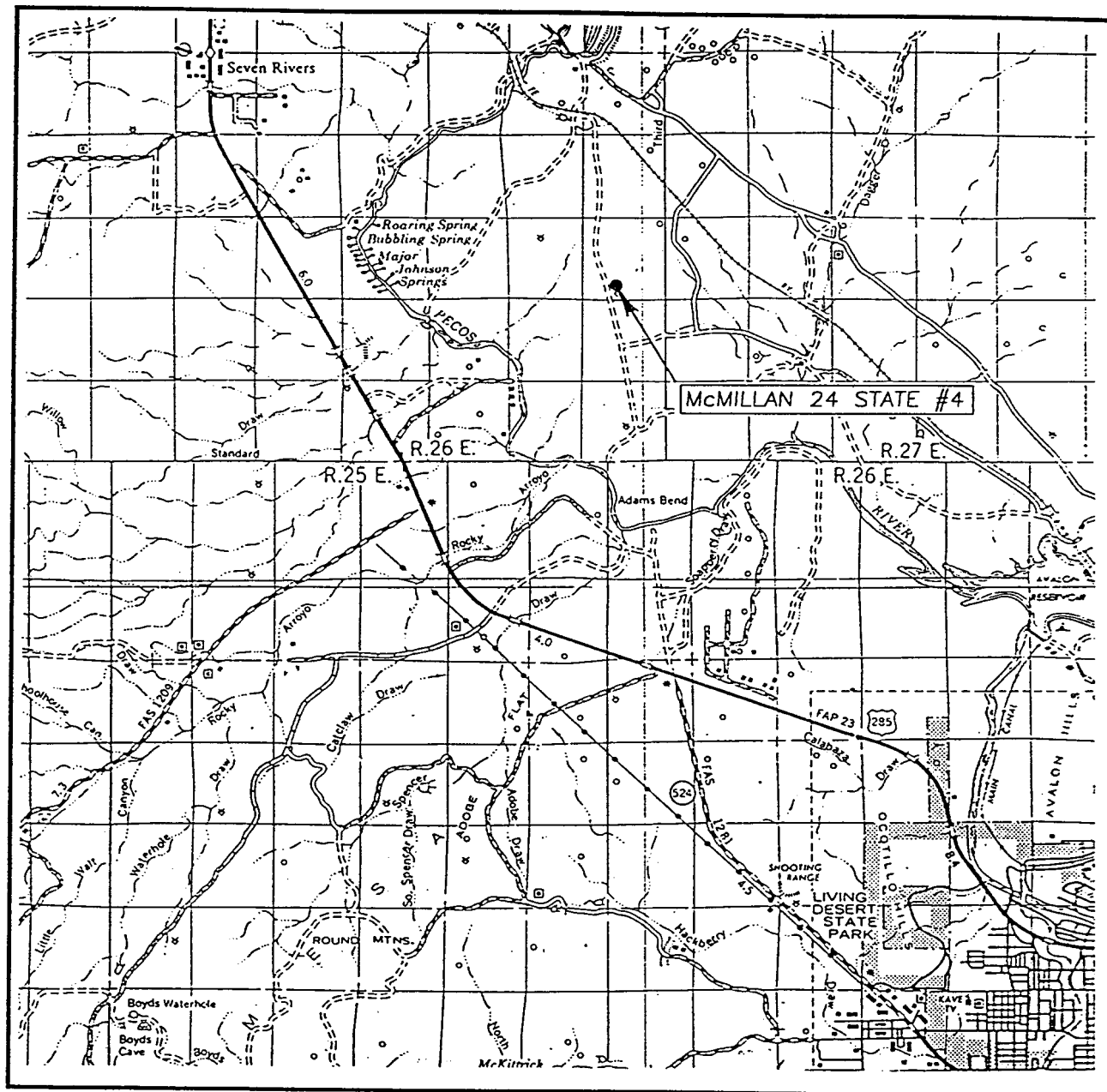
A.W.B

Signature & Seal of
Professional Surveyor

Ronald J. Kidson 4/10/03
003.11.0387

Certificate No. RONALD J. KIDSON 3239
GARY KIDSON 12641

VICINITY MAP



SCALE: 1" = 2 MILES

SEC. 24 TWP. 20-S RGE. 26-E

SURVEY N.M.P.M.

COUNTY EDDY

DESCRIPTION 660' FSL & 1650' FWL

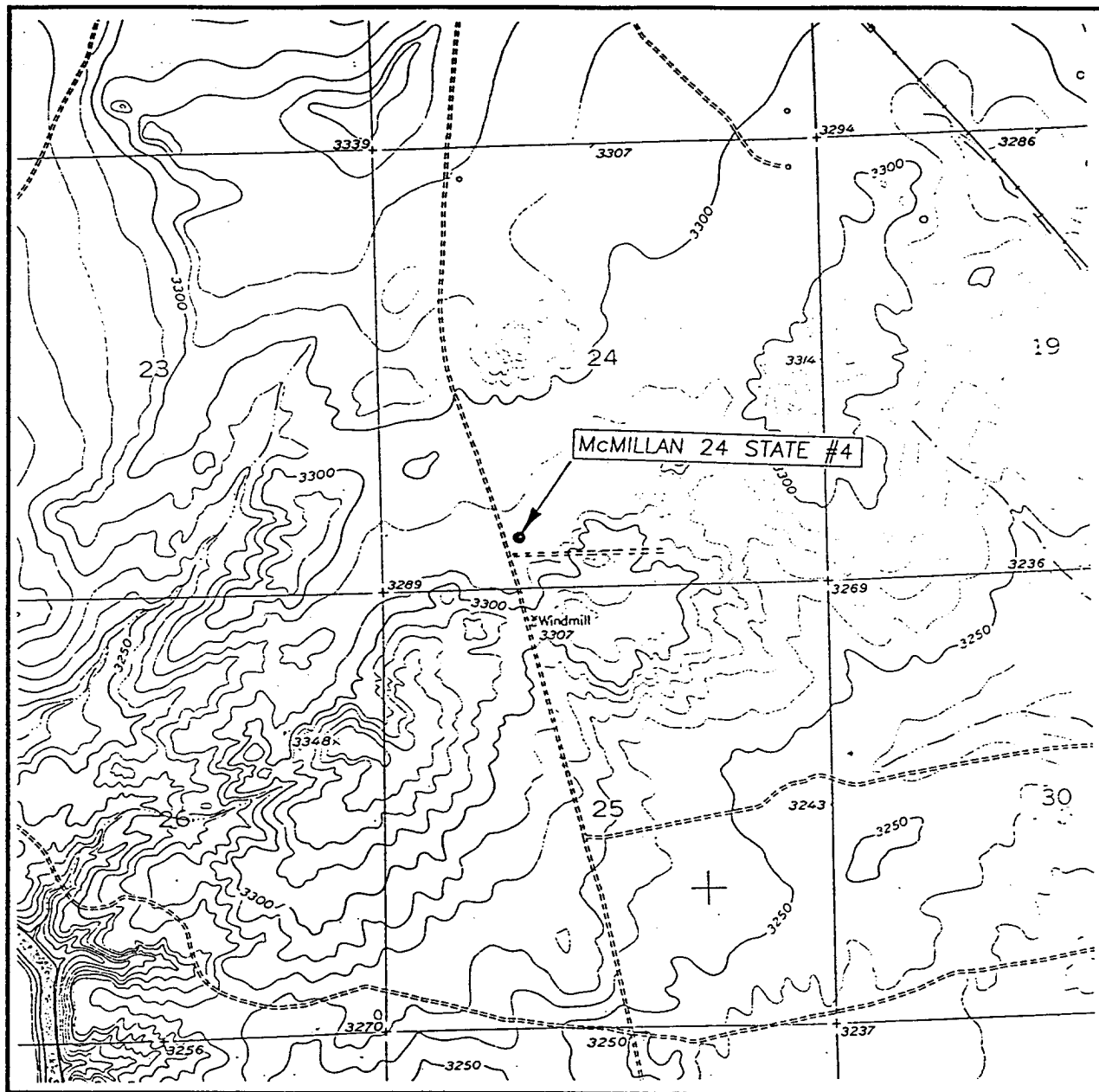
ELEVATION 3289'

OPERATOR POGO PRODUCING COMPANY

LEASE McMILLAN 24 STATE

JOHN WEST SURVEYING
HOBBS, NEW MEXICO
(505) 393-3117

LOCATION VERIFICATION MAP



SCALE: 1" = 2000'

CONTOUR INTERVAL: 10'
LAKE McMILLAN SOUTH, N.M.

SEC. 24 TWP. 20-S RGE. 26-E

SURVEY N.M.P.M.

COUNTY EDDY

DESCRIPTION 660' FSL & 1650' FWL

ELEVATION 3289'

OPERATOR POGO PRODUCING COMPANY

LEASE McMILLAN 24 STATE

U.S.G.S. TOPOGRAPHIC MAP
LAKE McMILLAN SOUTH, N.M.

JOHN WEST SURVEYING
HOBBS, NEW MEXICO
(505) 393-3117