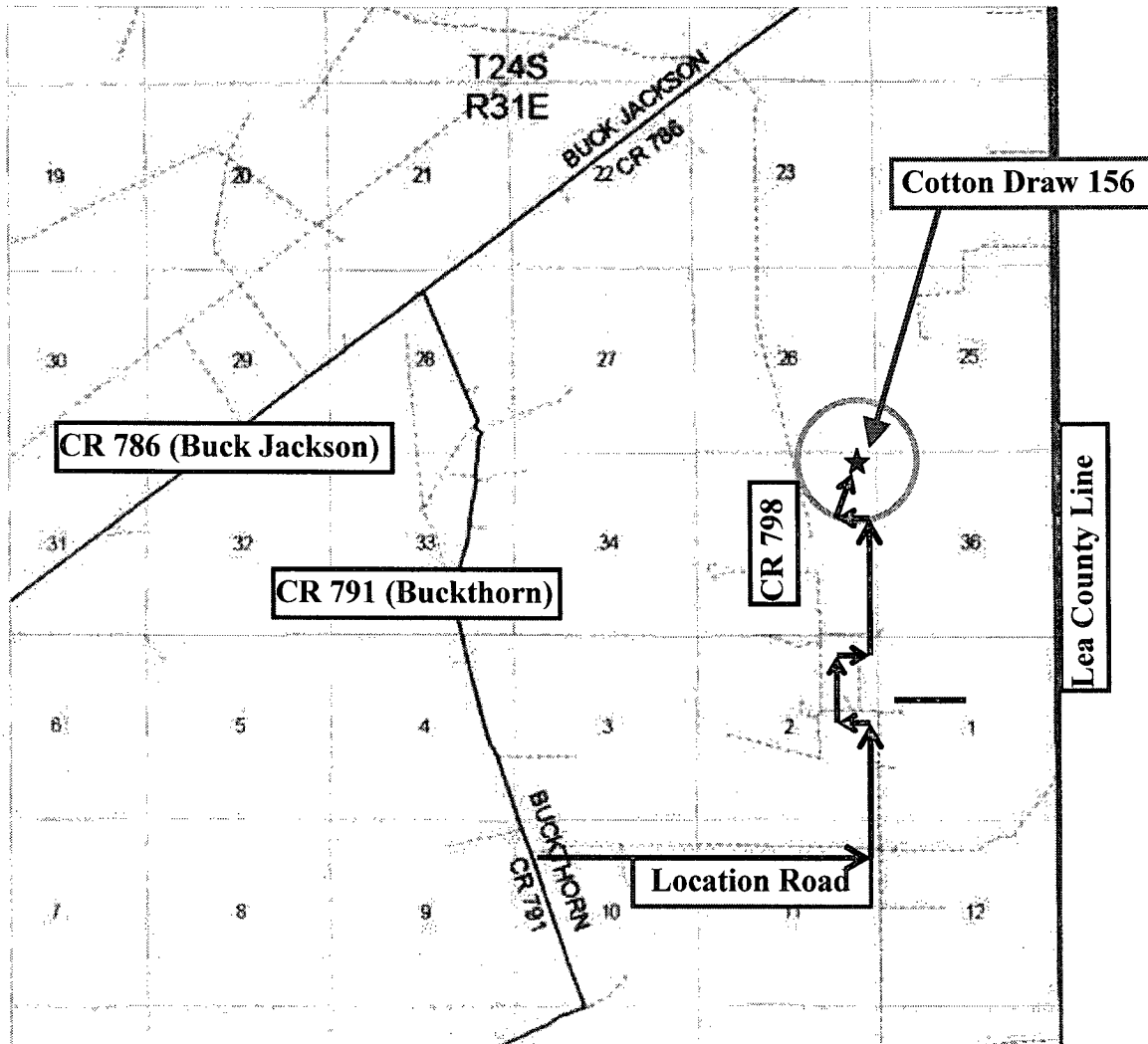
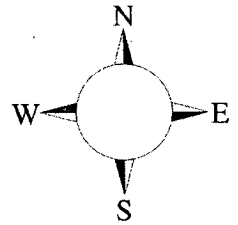


## Cotton Draw 156

This is an open drilling site. H<sub>2</sub>S monitoring equipment and emergency response equipment will be used within 500' of zones known to contain H<sub>2</sub>S, including warning signs, wind indicators and H<sub>2</sub>S monitor.



Assumed 100 ppm H<sub>2</sub>S concentration shall trigger activation of this plan.  
3000' (radius of exposure)

Crews shall escape upwind of escaping gas in the event of an emergency release of gas. Escape can be facilitated southeaston proposed access road to SW corner of CDU #12 pad. Crews should then block entrance to the location from the lease road so as not to allow anyone traversing into a hazardous area. The blockade should be at a safe distance outside of the ROE. Evacuation should continue if necessary Eastward on existing road 0.4 miles turn right and go south 0.8 miles, turn right and go west 0.7 miles, turn left and go south 0.4 miles, turn left and go east 0.3 miles, turn right and go south 7 miles, turn right and go west 1.9 miles to CR 791 (Buckthorn). Take 791 north 3.1 miles to CR 798 (Buck Jackson) There are no homes or buildings in or near the ROE.

**Assumed 100 ppm ROE = 3000'**

**100 ppm H<sub>2</sub>S concentration shall trigger activation of this plan.**

## Emergency Procedures

In the event of a release of gas containing H<sub>2</sub>S, the first responder(s) must

- Isolate the area and prevent entry by other persons into the 100 ppm ROE.
- Evacuate any public places encompassed by the 100 ppm ROE.
- Be equipped with H<sub>2</sub>S monitors and air packs in order to control the release.
- Use the “buddy system” to ensure no injuries occur during the response
- Take precautions to avoid personal injury during this operation.
- Contact operator and/or local officials to aid in operation. See list of phone numbers attached.
- Have received training in the
  - Detection of H<sub>2</sub>S, and
  - Measures for protection against the gas,
  - Equipment used for protection and emergency response.

### **Ignition of Gas Source**

Should control of the well be considered lost and ignition considered, take care to protect against exposure to Sulfur Dioxide (SO<sub>2</sub>). Intentional ignition must be coordinated with the NMOCD and local officials. Additionally the NM State Police may become involved. NM State Police shall be the Incident Command on scene of any major release. Take care to protect downwind whenever there is an ignition of the gas

### **Characteristics of H<sub>2</sub>S and SO<sub>2</sub>**

Common Name	Chemical Formula	Specific Gravity	Threshold Limit	Hazardous Limit	Lethal Concentration
Hydrogen Sulfide	H <sub>2</sub> S	1.189 Air = 1	10 ppm	100 ppm/hr	600 ppm
Sulfur Dioxide	SO <sub>2</sub>	2.21 Air = 1	2 ppm	N/A	1000 ppm

### **Contacting Authorities**

Devon Energy Corp. personnel must liaison with local and state agencies to ensure a proper response to a major release. Additionally, the OCD must be notified of the release as soon as possible but no later than 4 hours. Agencies will ask for information such as type and volume of release, wind direction, location of release, etc. Be prepared with all information available. The following call list of essential and potential responders has been prepared for use during a release. Devon Energy Corp. Company response must be in coordination with the State of New Mexico’s ‘Hazardous Materials Emergency Response Plan’ (HMER)

## Devon Energy Corp. Company Call List

<u>Artesia (575)</u>	<u>Cellular</u>	<u>Office</u>	<u>Home</u>
Foreman – Robert Bell.....	748-7448 .....	748-0178 .....	746-2991
Asst. Foreman –Tommy Polly.....	748-5290 .....	748-0165 .....	748-2846
Don Mayberry .....	748-5235 .....	748-0164 .....	746-4945
Montral Walker.....	390-5182 .....	748-0193 .....	936-414-6246
Engineer – Marcos Ortiz.....	(405) 317-0666....	(405) 552-8152....	(405) 381-4350

## Agency Call List

<u>Lea</u>	<u>Hobbs</u>
<u>County</u>	State Police .....
<u>(575)</u>	City Police .....
	Sheriff's Office .....
	Ambulance.....
	Fire Department.....
	LEPC (Local Emergency Planning Committee).....
	NMOCD .....
	US Bureau of Land Management .....

<u>Eddy</u>	<u>Carlsbad</u>
<u>County</u>	State Police .....
<u>(575)</u>	City Police .....
	Sheriff's Office .....
	Ambulance.....
	Fire Department.....
	LEPC (Local Emergency Planning Committee).....
	US Bureau of Land Management .....
	New Mexico Emergency Response Commission (Santa Fe) ...
	24 HR .....
	National Emergency Response Center (Washington, DC) ..

## Emergency Services

	Boots & Coots IWC .....
	Cudd Pressure Control.....
	Halliburton .....
	B. J. Services.....
<i>Give</i>	Flight For Life - Lubbock, TX .....
<i>GPS</i>	Aerocare - Lubbock, TX .....
<i>position:</i>	Med Flight Air Amb - Albuquerque, NM .....
	Lifeguard Air Med Svc. Albuquerque, NM .....

Prepared in conjunction with  
Dyke Browning





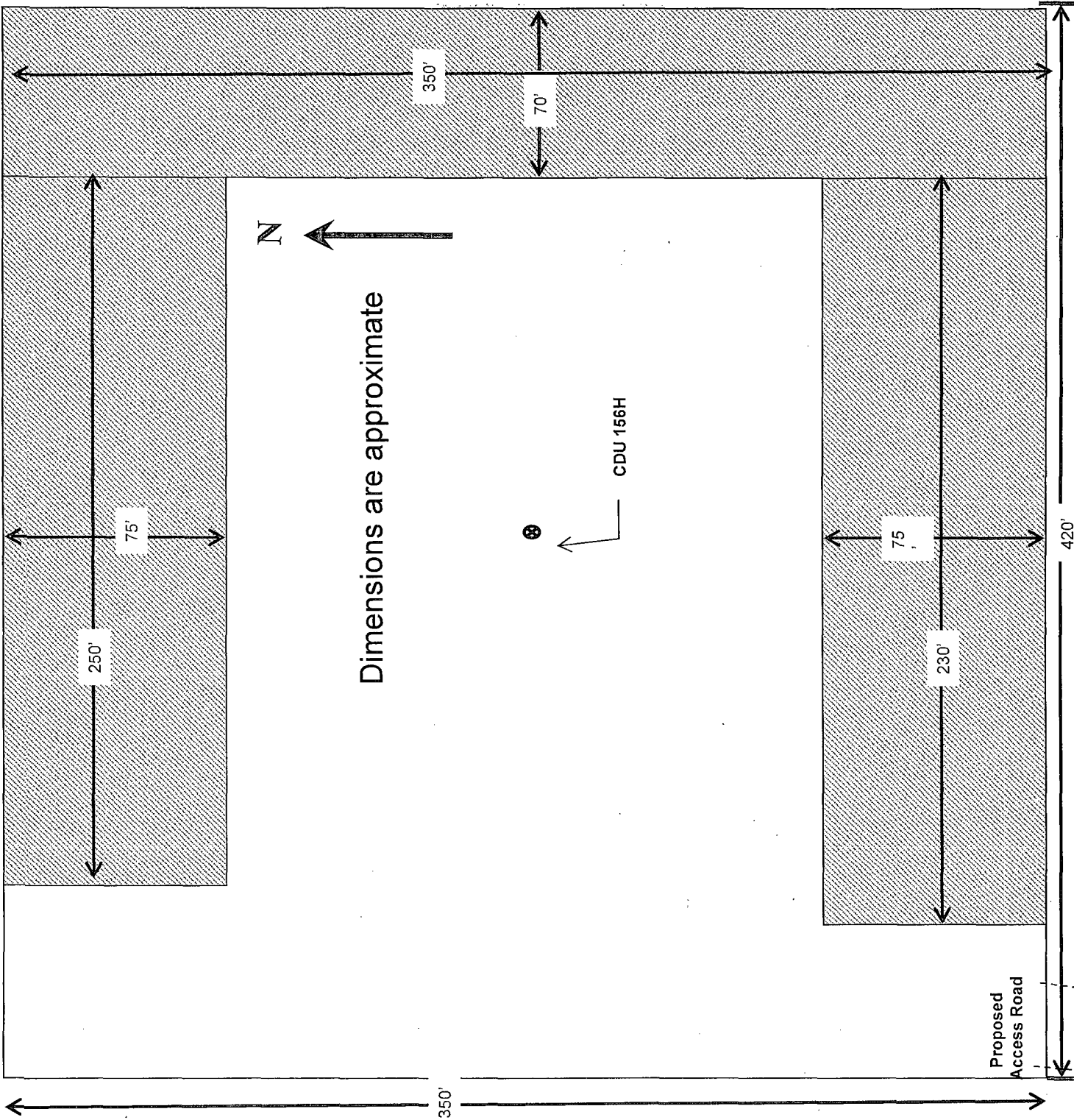
Proposed Interim  
Site Reclamation

Devon Energy Production Co  
Cotton Draw Unit 156H  
NE/4 NE/4  
Sec. 35-T24S-R31E  
Eddy County, NM



Not to scale

GM 8/26/10



- e. If a pit or closed loop system is utilized, Devon will comply with the NMOCD requirements 19.15.17 and submit form C-144 to the appropriate NMOCD District Office. A copy to be provided to the BLM.

**10. Plans for Surface Reclamation Include Both Final & Interim:**

- a. After concluding the drilling and/or completion operations, if the well is found non-commercial, the caliche will be removed from the pad and transported to the original caliche pit or used for other drilling locations. The road will be reclaimed as directed by the BLM. The original top soil will again be returned to the pad and contoured, as close as possible, to the original topography. We will use a closed loop system.
- b. The location and road will be rehabilitated as recommended by the BLM.
- c. If the well is deemed commercially productive, caliche from areas of the pad site not required for operations will be reclaimed. The original top soil will be returned to the area of the drill pad not necessary to operate the well. These unused areas of the drill pad will be contoured, as close as possible, to match the original topography.
- d. All disturbed areas not needed for active support of production operations will undergo interim reclamation. The portions of the cleared well site not needed for operational and safety purposes will be recontoured to a final or intermediate contour that blends with the surrounding topography as much as possible. Topsoil will be respread over areas not needed for all-weather operations.

**11. Surface Ownership**

- a. The surface is owned by the US Government and is administered by the Bureau of Land Management. The surface is multiple use with the primary uses of the region for the grazing of livestock and the production of oil and gas.
- b. The proposed road routes and the surface location will be restored as directed by the BLM.

**12. Other Information:**

- a. The area surrounding the well site is grassland. The topsoil is very sandy in nature. The vegetation is moderately sparse with native prairie grass, sage bush, yucca and miscellaneous weeds. No wildlife was observed but it is likely that deer, rabbits, coyotes, and rodents traverse the area.
- b. There is no permanent or live water in the general proximity of the location.
- c. There are no dwellings within 2 miles of location.
- d. A Cultural Resources Examination will be completed by the Permian Basin Cultural Resource Fund in lieu of being required to conduct a Class III Survey for cultural resources associated with their project within the BLM office in Carlsbad, New Mexico.

**13. Bond Coverage:**

Bond Coverage is Nationwide; Bond # is CO-1104

**Operators Representative:**

The Devon Energy Production Company, L.P. representatives responsible for ensuring compliance of the surface use plan are listed below.

Jim Cromer - Operations Engineer Advisor  
Devon Energy Production Company, L.P.  
20 North Broadway  
Oklahoma City, OK 73102-8260  
(405) 228-4464 (office)  
(405) 694-7718 (Cellular)

Don Mayberry - Superintendent  
Devon Energy Production Company, L.P.  
Post Office Box 250  
Artesia, NM 88211-0250  
(575) 748-3371 (office)  
(575) 746-4945 (home)

## Certification

I hereby certify that I, or persons under my direct supervision, have inspected the proposed drill site and access road proposed herein; that I am familiar with the conditions that presently exist; that I have full knowledge of State and Federal laws applicable to this operation; that the statements made in this APD package are, to the best of my knowledge, true and correct; and that the work associated with the operations proposed herein will be performed in conformity with this APD package and the terms and conditions under which it is approved. I also certify that I, or Devon Energy Production Company, L.P. am responsible for the operations conducted under this application. These statements are subject to the provisions of 18 U.S.C. 1001 for the filing of false statements.

I hereby also certify that I, or Devon Energy Production Company, L.P. have made a good faith effort to provide the surface owner with a copy of the Surface Use Plan of Operations and any Conditions of Approval that are attached to the APD.

Executed this 23<sup>RD</sup> day of November, 2010.

Printed Name: Judy A. Barnett

Signed Name: 

Position Title: Regulatory Analyst

Address: 20 North Broadway, OKC OK 73102

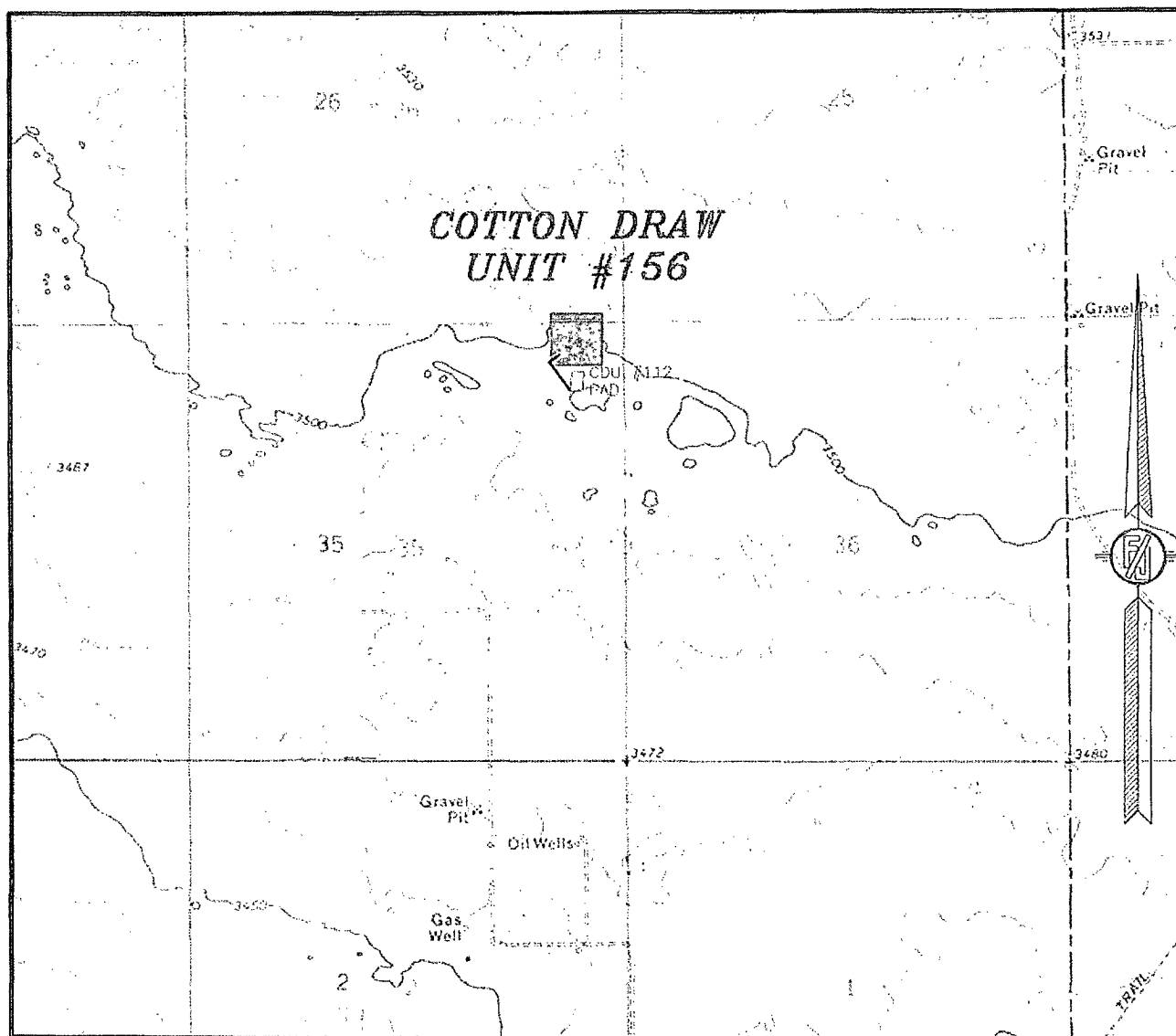
Telephone: (405)-228-8699

Field Representative (if not above signatory):

Address (if different from above):

Telephone (if different from above):

SECTION 35, TOWNSHIP 24 SOUTH, RANGE 31 EAST, N.M.P.M.  
EDDY COUNTY, STATE OF NEW MEXICO  
**LOCATION VERIFICATION MAP**



CONTOUR INTERVAL:  
BIG SINKS  
PADUCA BREAKS

NOT TO SCALE

DEVON ENERGY PRODUCTION COMPANY, L.P.  
**COTTON DRAW UNIT #156**  
LOCATED 200 FT. FROM THE NORTH LINE  
AND 660 FT. FROM THE EAST LINE OF  
SECTION 35, TOWNSHIP 24 SOUTH,  
RANGE 31 EAST, N.M.P.M.  
EDDY COUNTY, STATE OF NEW MEXICO

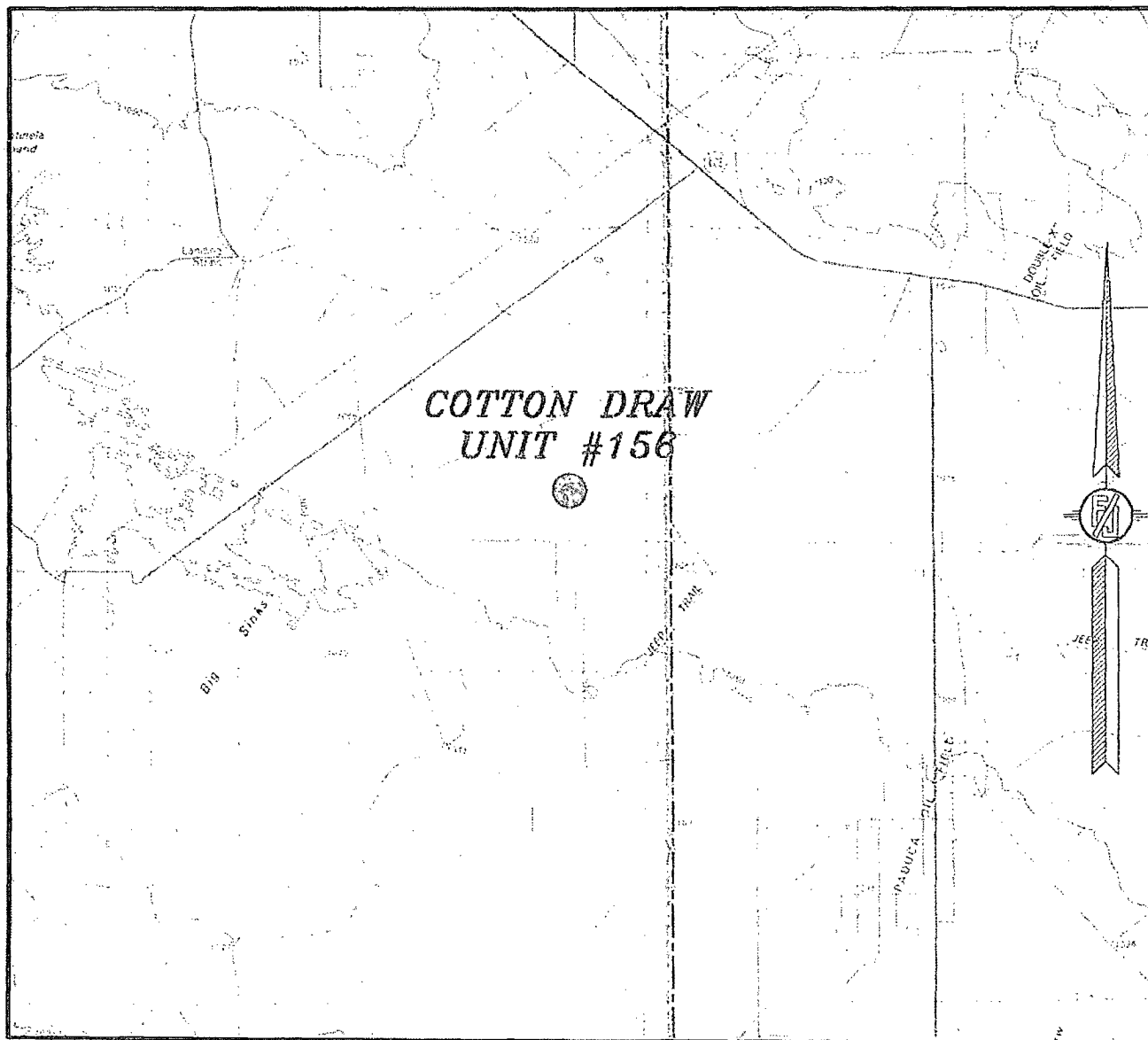
SEPTEMBER 30, 2010

SURVEY NO. 235

MADRON SURVEYING, INC. 301 SOUTH CANAL CARLSBAD, NEW MEXICO  
(575) 887-2530



SECTION 35, TOWNSHIP 24 SOUTH, RANGE 31 EAST, N.M.P.M.  
EDDY COUNTY, STATE OF NEW MEXICO  
**VICINITY MAP**



NOT TO SCALE

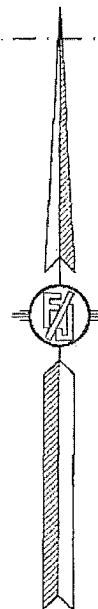
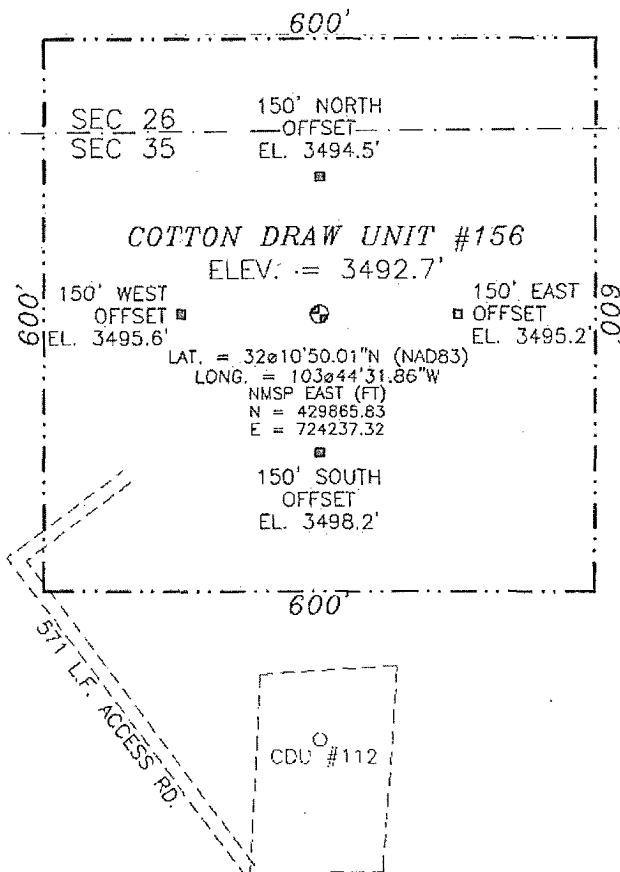
DEVON ENERGY PRODUCTION COMPANY, L.P.  
**COTTON DRAW UNIT #156**  
LOCATED 200 FT. FROM THE NORTH LINE  
AND 660 FT. FROM THE EAST LINE OF  
SECTION 35, TOWNSHIP 24 SOUTH,  
RANGE 31 EAST, N.M.P.M.  
EDDY COUNTY, STATE OF NEW MEXICO

SEPTEMBER 30, 2010

SURVEY NO. 235

MADRON SURVEYING, INC. 301 SOUTH CANAL CARLSBAD, NEW MEXICO  
(575) 287-9830

SECTION 35, TOWNSHIP 24 SOUTH, RANGE 31 EAST, N.M.P.M.  
EDDY COUNTY, STATE OF NEW MEXICO



0 20 100 200 400

SCALE 1" = 200'

DIRECTIONS TO LOCATION

FROM CR. #798 (BUCK JACKSON) AND CR. #791 (BUCK THORN) GO SOUTH ON CR. #791 3.1 MILES TURN LEFT AND GO EAST 1.9 MILES TURN LEFT AND GO NORTH 0.7 MILES TURN LEFT AND GO WEST 0.3 MILES TURN RIGHT AND GO NORTH 0.4 MILES TURN RIGHT AND GO EAST 0.7 MILES TURN LEFT AND GO NORTH 0.8 MILES TURN LEFT AND GO WEST 0.4 MILES TO EXISTING CDU #112 WELL AND FROM THE SOUTHWEST PAD CORNER FOLLOW PROPOSED ROAD SURVEY NW. 422' AND LOCATION IS ON RIGHT (NE) 422'

DEVON ENERGY PRODUCTION COMPANY, L.P.

**COTTON DRAW UNIT #156**

LOCATED 200 FT. FROM THE NORTH LINE  
AND 660 FT. FROM THE EAST LINE OF  
SECTION 35, TOWNSHIP 24 SOUTH,  
RANGE 31 EAST, N.M.P.M.  
EDDY COUNTY, STATE OF NEW MEXICO

SEPTEMBER 30, 2010

SURVEY NO. 235

MADRON SURVEYING, INC. 301 SOUTH CANAL CARLSBAD, NEW MEXICO  
(575) 887-5530

SECTION 35, TOWNSHIP 24 SOUTH, RANGE 31 EAST, N.M.P.M.  
EDDY COUNTY, STATE OF NEW MEXICO

## AERIAL PHOTO



NOT TO SCALE  
AERIAL PHOTO:  
GOOGLE EARTH  
USDA - AUG, 2009

DEVON ENERGY PRODUCTION COMPANY, L.P.  
**COTTON DRAW UNIT #156**  
LOCATED 200 FT. FROM THE NORTH LINE  
AND 660 FT. FROM THE EAST LINE OF  
SECTION 35, TOWNSHIP 24 SOUTH,  
RANGE 31 EAST, N.M.P.M.  
EDDY COUNTY, STATE OF NEW MEXICO

SEPTEMBER 30, 2010

SURVEY NO. 235

MADRON SURVEYING, INC. 301 SOUTH CANAL (575) 887-5830 CARLSBAD, NEW MEXICO

# 24S 31E<sup>3</sup>

# 24

Haracz AMO Fed 6

Haracz AMO Fed 8H

Haracz AMO Fed 9H

T Heflin Fed 1

Cotton Draw Ut 121H

Haracz AMO Fed 8H

Haracz AMO Fed 1H  
Haracz AMO Fed 2

Cotton Draw Ut 119H

Bet-Net 1

Cotton Draw Ut 120H

Cotton Draw Ut 118H

Bet-Net Fed 2

BTBN 25 Fed 2

# 27

PLU 58

# 26

# 25

Cotton Draw Ut 114H (Pilot)

Cotton Draw Ut 151H

Cotton Draw Ut 155H

COTTON DRAW UT 156H  
DEVON ENERGY

Cotton Draw Ut 110H

Cotton Draw Ut 152H

# 1 MILE

Cotton Draw Ut 112

Estimated distance to nearest  
wellbore- 415 ft S

Cotton Draw 111

# 34

Cotton Draw Ut 150H

# 35

# 36

Cotton Draw Ut 67

Cotton Draw 90

Cotton Draw Ut 115H

Cotton Draw Ut 113

Estimated distance to nearest  
wellbore- 1,325 ft W

# 1 MILE

Cotton Draw Ut 153H

BHL

Cotton Draw Ut 154H

Cotton Draw Ut 116H

**devon** DEVON ENERGY

1 MILE RADIUS MAP

COTTON DRAW UNIT 156

0 1,923  
FEET

WELL SYMBOLS

- Oil Well
- Gas Well
- Injection Well
- Dry Hole, With Show of Oil
- Prospect Location

Cotton Draw Ut 65

# 2

# 1

PLU 67

Cotton Draw Ut 81

Cotton Draw Ut 84

Cotton Draw Ut 76

Cotton Draw Ut 89