

DISTRICT I  
1625 N. French Dr., Hobbs, NM 88240

DISTRICT II  
1301 W. Grand Avenue, Artesia, NM 88210

DISTRICT III  
1000 Rio Brazos Rd., Aztec, NM 87410

DISTRICT IV  
1220 S. St. Francis Dr., Santa Fe, NM 87505

State of New Mexico  
Energy, Minerals and Natural Resources Department

Form C-102  
Revised October 15, 2009

Submit one copy to appropriate  
District Office

OIL CONSERVATION DIVISION  
1220 South St. Francis Dr.  
Santa Fe, New Mexico 87505

WELL LOCATION AND ACREAGE DEDICATION PLAT

☐ AMENDED REPORT

API Number 30-015-37496	Pool Code	Pool Name Wolfcamp Wildcat
Property Code 37991	Property Name JUMPING SPRING "16" STATE COM	Well Number 1
OGRID No. 162683	Operator Name CIMAREX ENERGY CO. OF COLORADO	Elevation 3390'

Surface Location

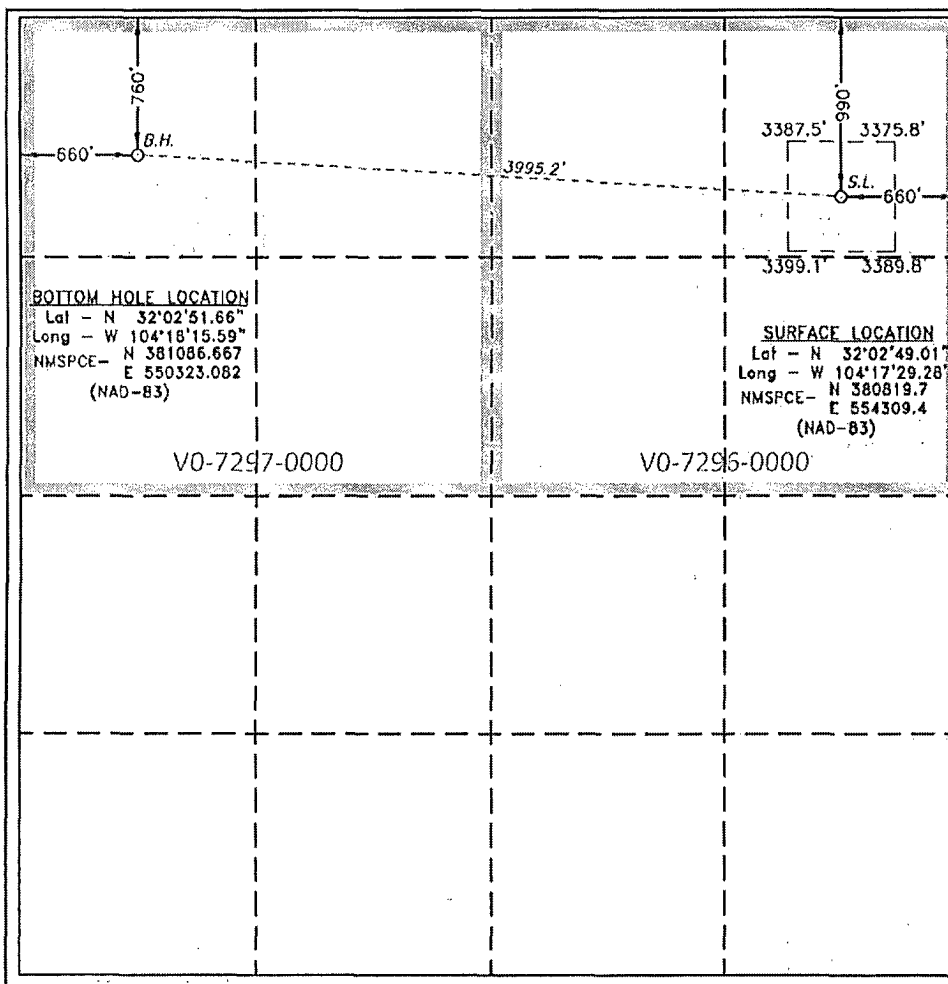
UL or lot No.	Section	Township	Range	Lot Idn	Feet from the	North/South line	Feet from the	East/West line	County
A	16	26 S	26 E		990	NORTH	660	EAST	EDDY

Bottom Hole Location If Different From Surface

UL or lot No.	Section	Township	Range	Lot Idn	Feet from the	North/South line	Feet from the	East/West line	County
D	16	26 S	26 E		760	NORTH	660	WEST	EDDY

Dedicated Acres 320	Joint or Infill	Consolidation Code P	Order No.
------------------------	-----------------	-------------------------	-----------

NO ALLOWABLE WILL BE ASSIGNED TO THIS COMPLETION UNTIL ALL INTERESTS HAVE BEEN CONSOLIDATED  
OR A NON-STANDARD UNIT HAS BEEN APPROVED BY THE DIVISION.



OPERATOR CERTIFICATION

I hereby certify that the information contained herein is true and complete to the best of my knowledge and belief, and that this organization either owns a working interest or unleased mineral interest in the land including the proposed bottom hole location or has a right to drill this well at this location pursuant to a contract with an owner of such a mineral or working interest, or to a voluntary pooling agreement or a compulsory pooling order heretofore entered by the division.

*Zeno Farris* 3/1/2011  
Signature Date

Zeno Farris

Printed Name

SURVEYOR CERTIFICATION

I hereby certify that the well location shown on this plat was plotted from field notes of actual surveys made by me or under my supervision, and that the same is true and correct to the best of my belief.

DECEMBER 30, 2009

Date Surveyed  
Signature of Professional Surveyor

Professional Surveyor

7097

No. 2009

Certificate No. 7977

Basin Surveys

Basin Surveys

Basin Surveys

Basin Surveys

Basin Surveys

Basin Surveys

Basin Surveys

Basin Surveys

Basin Surveys

Basin Surveys

Basin Surveys

Basin Surveys

Basin Surveys

Basin Surveys

Basin Surveys

Basin Surveys

Basin Surveys

Basin Surveys

Basin Surveys