

30-01538001

**BURNETT OIL CO., INC. EMERGENCY NOTIFICATION LIST**

**Burnett's New Mexico Office** (575) 677-2313  
**Belton Mathews BOCI District Superintendent** CELL (575) 703-9601  
BURNETT OIL HOME OFFICE (817) 332-5108  
Mark Jacoby BOCI ENGINEERING MANAGER CELL (817) 312- 2751

**EDDY COUNTY SHERIFF** 911 OR (575) 746-9888  
**NEW MEXICO STATE POLICE** (575) 746-2701

Loco Hills Fire Department (VOLUNTEER ONLY) 911 OR (575) 677 2349  
For Medical and Fire (575) 746-2701 (ARTESIA)

Flight for Life Air Ambulance (LUBBOCK) (806) 743-9911  
Aerocare Air Ambulance (LUBBOCK) (806) 747-8923  
Med Flight Air Ambulance (ALBUQ) (505) 842-4433  
S B Med Svc Air Ambulance (ALBUQ) (505) 842-4949

US Bureau of Land Management Carlsbad (575) 361-2822 (575) 234-5972  
New Mexico Oil Conversation Division ARTESIA (575) 748-1283  
New Mexico Emergency Response Commission 24 HR (575) 827-9126  
New Mexico State Emergency Operation Center (575) 476-9635  
Local Emergency Planning Committee (Artesia) (575) 746-2122  
National Emergency Response Center (Washington, DC) (800) 424-8802

Boots & Coots IWC (800) 256-9688  
Cudd Pressure Control (432) 570-5300  
Halliburton Svc (575) 746-2757  
B J Svc (575) 746-2293

**THIS MUST BE POSTED AT THE RIG WHILE ON LOCATION.**

**Burnett Office 87 SQUARE LAKE ROAD (CR #220), Loco Hills, New Mexico 88255**  
(Loco Hills, New Mexico (2 MILES East of Loco Hills On US Hwy 82 TO C#220 Then  
North On CR# 220 Approx One Mile To Office.).

DRILLING EXHIBIT A

# HYDROGEN SULFIDE (H2S) CONTINGENCY PLAN

ASSUMED 100 PPM ROE = 3000'

## Emergency Procedures

**In the event of a release of gas containing H2S, The first responder(s) must**

- \* Isolate the area and prevent entry by other persons into the 100 PPM ROE.
- \* Evacuate any public places encompassed by 100 PPM ROE.
- \* Be equipped with H2S monitors and air packs in order to control release.
- \* Use the "buddy system" to ensure no injuries occur during the response.
- \* Take precautions to avoid personal injury during this operation.
- \* Have received training in the following:
  1. H2S detection
  2. Measures for protection against this gas
  3. Equipment used for protection and emergency response.

## Ignition of Gas Source

Should control of the well be considered lost and ignition considered, take care to protect against exposure to Sulfur Dioxide (SO2.) Intentional ignition must be coordinated with the NMOCD and local officials. Additionally the New Mexico State Police may become involved. NM State Police shall be the incident command on scene of any major release. Take care to protect downwind whenever there is an ignition of gas.

## **Characteristics of H2S and SO2**

Common Name	Chemical Formula	Specific Gravity	Threshold Limit	Hazardous Limit	Lethal Concentration
Hydrogen Sulfide	H2S	1.189 Air = 1	10 ppm	100 ppm/hr	600 ppm
Sulfur Dioxide	SO2	2.21 Air = 1	2 ppm	NA	1000 ppm

## **Contacting Authorities**

Burnett Oil Co., Inc. personal must liaison with local and state agencies to ensure a proper response to a major release. Additionally, the OCD must be notified of the release as soon as possible but no later than 4 hours. Agencies will ask for information such as type and volume of release, wind and direction, location of release, etc. **Be sure all is written down and ready to give to contact list (Drilling Exhibit A.) Directions to the site are below.** Burnett's response must be in coordination with the State of New Mexico's Hazardous Materials Emergency Response Plan.

**Burnett Office 87 SQUARE LAKE ROAD (CR #220), Loco Hills, New Mexico 88255  
(Loco Hills, New Mexico (2 MILES East of Loco Hills On US Hwy 82 TO C#220 Then North On CR# 220 Approx One Mile To Office**

**BURNETT OIL CO., INC.**

DRILLING EXHIBIT B

**BURNETT OIL CO., INC. OPERATOR CERTIFICATION**  
**ALL VERTICAL CEDAR LAKE YESO/ LOCO HILLS PADDOCK WELLS, GRAYBURG SAN**  
**ANDRES WELLS**

FEDERAL LEASE # LC029338A, LC029339A, LC030570A, LC055264, LC055958, NM2746,  
NM2747 NM2748, NM05067 & NM074939

Section 1, 8, 11, 12, 13, 14, 23, 24 & 25, Township 17 South, Range 30 East, Eddy County, N.M

**Operator's Representative:**

Burnett Oil Co., Inc. field representative responsible for compliance with the approved surface use and operations plan is:

Mr. Belton Mathews, District Supt.

P.O. Box 188

Loco Hills, New Mexico 88255

Office phone: (575) 677-2313

Home phone: (575) 746-8647

Cellular phone: (575) 703-9601

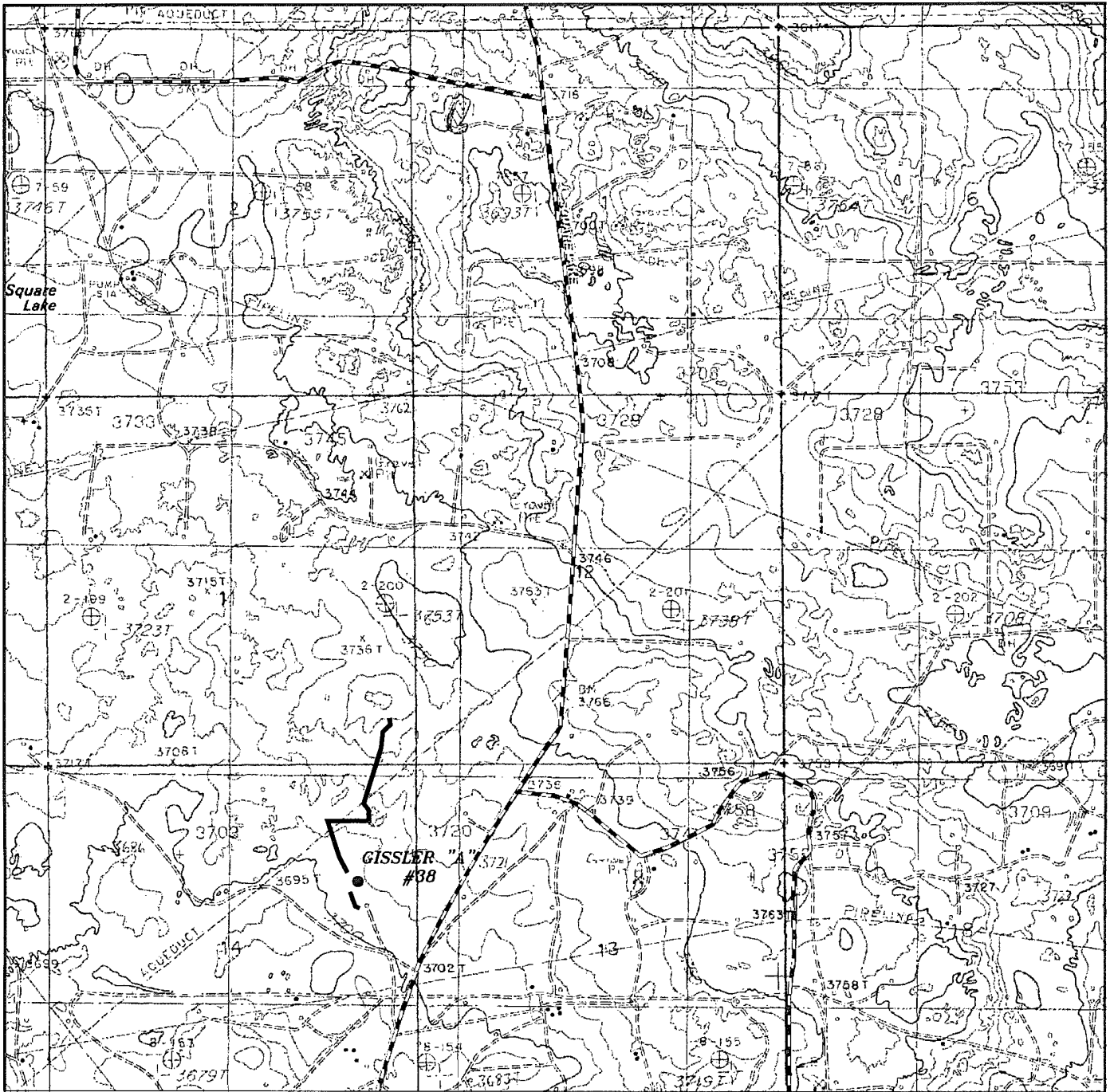
I hereby certify that I, or persons under my direct supervision have inspected the drill site and access route; that I am familiar with the conditions that currently exist; that the statements made in this plan are to the best of my knowledge, true and correct; and that the work associated with operations proposed herein will be performed by Burnett Oil Co., Inc. and its contractors and subcontractors in conformity with this plan and the terms and conditions under which it is approved. This statement is subject to the provisions of 18 U.S.C. 1001 for the filing of a false statement.

Date

2/8/11

By

Mark A. Jacoby  
Mark A. Jacoby  
Engineering Manager



**GISSLER "A" #38**

Located 1650' FNL and 850' FEL  
 Section 14, Township 17 South, Range 30 East,  
 N.M.P.M., Eddy County, New Mexico.

*Surface EV #1*



focused on excellence  
 in the oilfield

P.O. Box 1786  
 1120 N. West County Rd.  
 Hobbs, New Mexico 88241  
 (575) 393-7316 - Office  
 (575) 392-2206 - Fax  
 basinsurveys.com

W.O. Number: JMS 23943

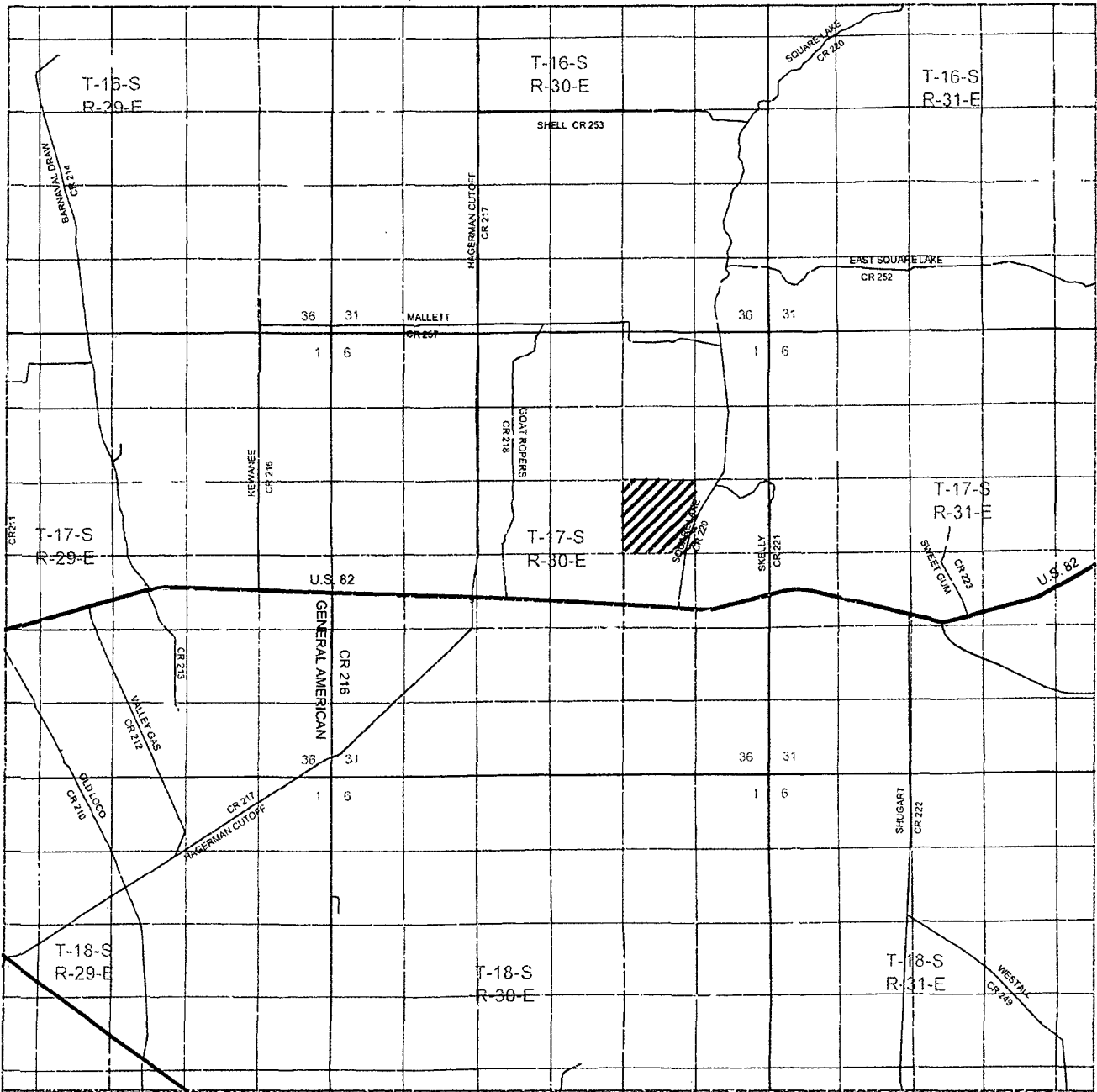
Survey Date: 01-05-2011

Scale: 1" = 2000'

Date: 01-21-2011



**BURNETT OIL  
 COMPANY, INC.**



**GISSLER "A" #38**

Located 1650' FNL and 850' FEL  
 Section 14, Township 17 South, Range 30 East,  
 N.M.P.M., Eddy County, New Mexico.

*Surface Ex. A*



focused on excellence  
 in the oilfield

P.O. Box 1786  
 1120 N. West County Rd.  
 Hobbs, New Mexico 88241  
 (575) 393-7316 - Office  
 (575) 392-2206 - Fax  
 basinsurveys.com

W.O. Number JMS 25943

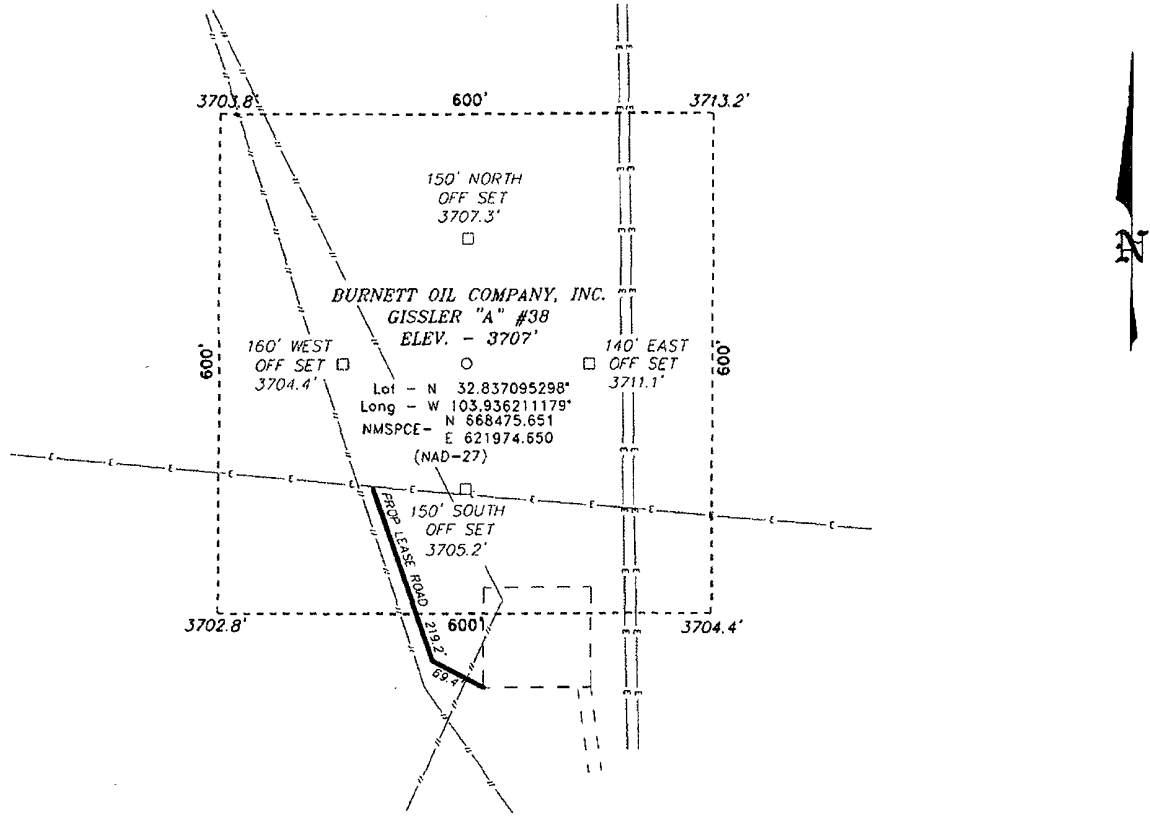
Survey Date: 01-05-2011

Scale: 1" = 2 Miles

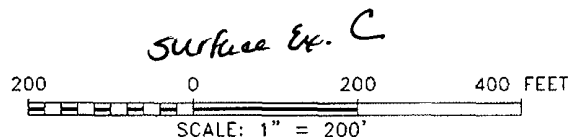
Date: 01-21-2011

**BURNETT OIL  
 COMPANY, INC.**

SECTION 14, TOWNSHIP 17 SOUTH, RANGE 30 EAST, N.M.P.M.,  
EDDY COUNTY, NEW MEXICO.



**BURNETT OIL COMPANY, INC.**  
**GISSLER "A" #38**  
**ELEV. - 3707'**  
 Lat - N 32.837095298°  
 Long - W 103.936211179°  
 NMSPCE - N 668475.651  
 E 621974.650  
 (NAD-27)



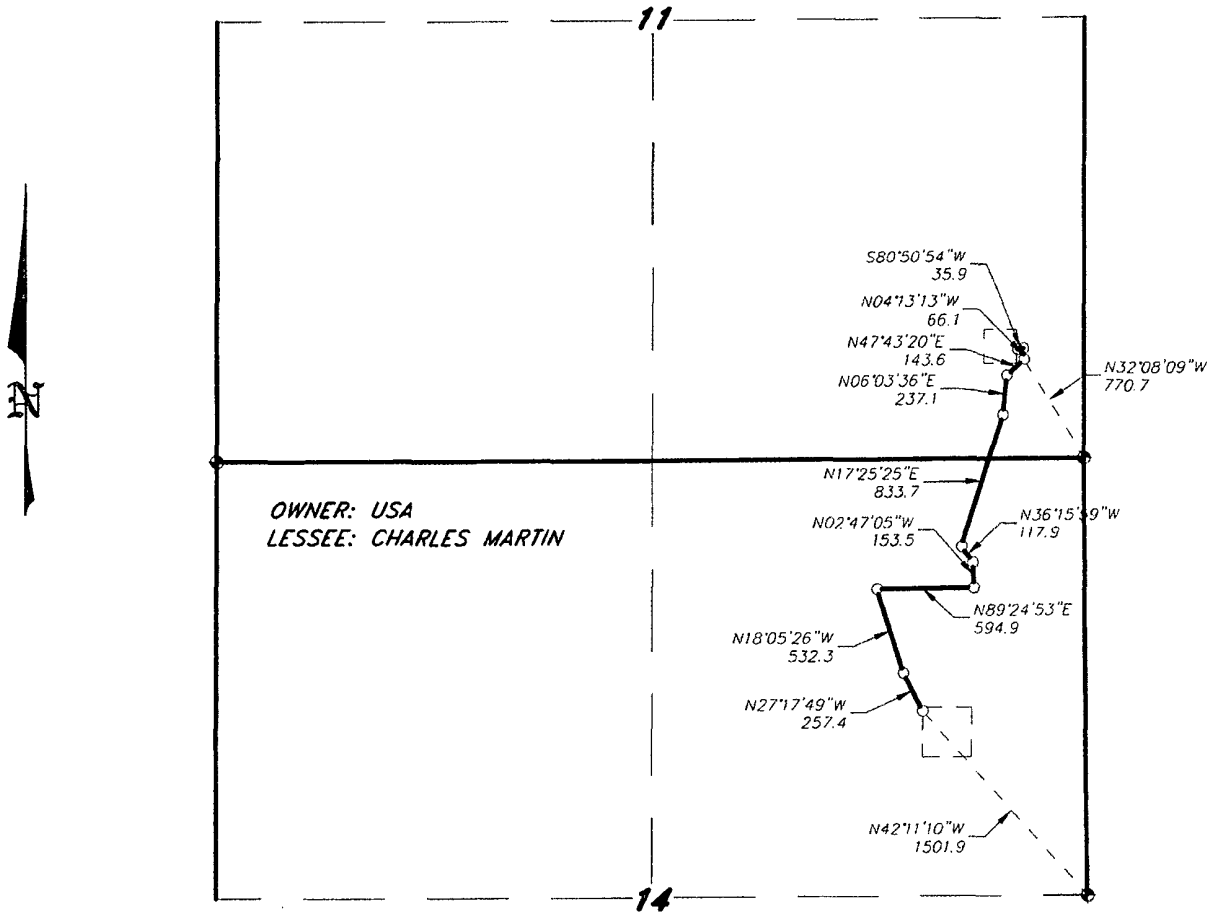
Directions to Location:  
 FROM THE JUNCTION OF HWY 82 AND SQUARE LAKE,  
 GO NORTH ON SQUARE LAKE FOR 1.5 MILES TO  
 LEASE ROAD, ON LEASE ROAD GO NORTHWEST FOR  
 0.1 MILES TO PROPOSED LEASE ROAD.

<b>BURNETT OIL COMPANY, INC.</b>	
REF: GISSLER "A" #38 / WELL PAD TOPO	
THE GISSLER "A" #38 LOCATED 1650'	
FROM THE NORTH LINE AND 850' FROM THE EAST LINE OF	
SECTION 14, TOWNSHIP 17 SOUTH, RANGE 30 EAST,	
N.M.P.M., EDDY COUNTY, NEW MEXICO.	

<b>BASIN SURVEYS</b> P.O. BOX 1786 - HOBBS, NEW MEXICO	
W.O. Number: 23943	Drawn By: J. SMALL
Date: 01-21-2011	Disk: JMS 23943

Survey Date: 01-05-2011 Sheet 1 of 1 Sheets

SECTIONS 11&14, TOWNSHIP 17 SOUTH, RANGE 30 EAST, N.M.P.M.,  
EDDY COUNTY, NEW MEXICO.

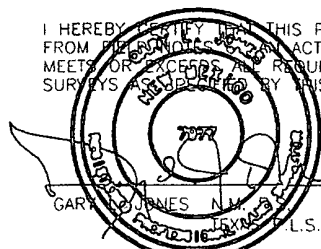


LEGAL DESCRIPTION

A STRIP OF LAND 30.0 FEET WIDE, LOCATED IN SECTIONS 11&14, TOWNSHIP 17 SOUTH, RANGE 30 EAST, N.M.P.M., EDDY COUNTY, NEW MEXICO AND BEING 15.0 FEET LEFT AND RIGHT OF THE ABOVE PLATTED CENTERLINE SURVEY.

SECTION 11 = 757.2 FEET = 45.89 RODS = 0.14 MILES = 0.52 ACRES  
 SECTION 14 = 2215.2 FEET = 134.26 RODS = 0.42 MILES = 1.53 ACRES  
 TOTAL = 2972.4 FEET = 180.15 RODS = 0.56 MILES = 2.05 ACRES

I HEREBY CERTIFY THAT THIS PLAT WAS PREPARED FROM THE ORIGINAL ACTUAL SURVEY AND MEETS OR EXCEEDS ALL REQUIREMENTS FOR LAND SURVEYS AS PRESCRIBED BY THIS STATE.



**BASIN SURVEYS** P.O. BOX 1786 - HOBBS, NEW MEXICO

W.O. Number: 23943 Drawn By: J. M. SMALL

Date: 01-21-2011 Disk: JMS 23943

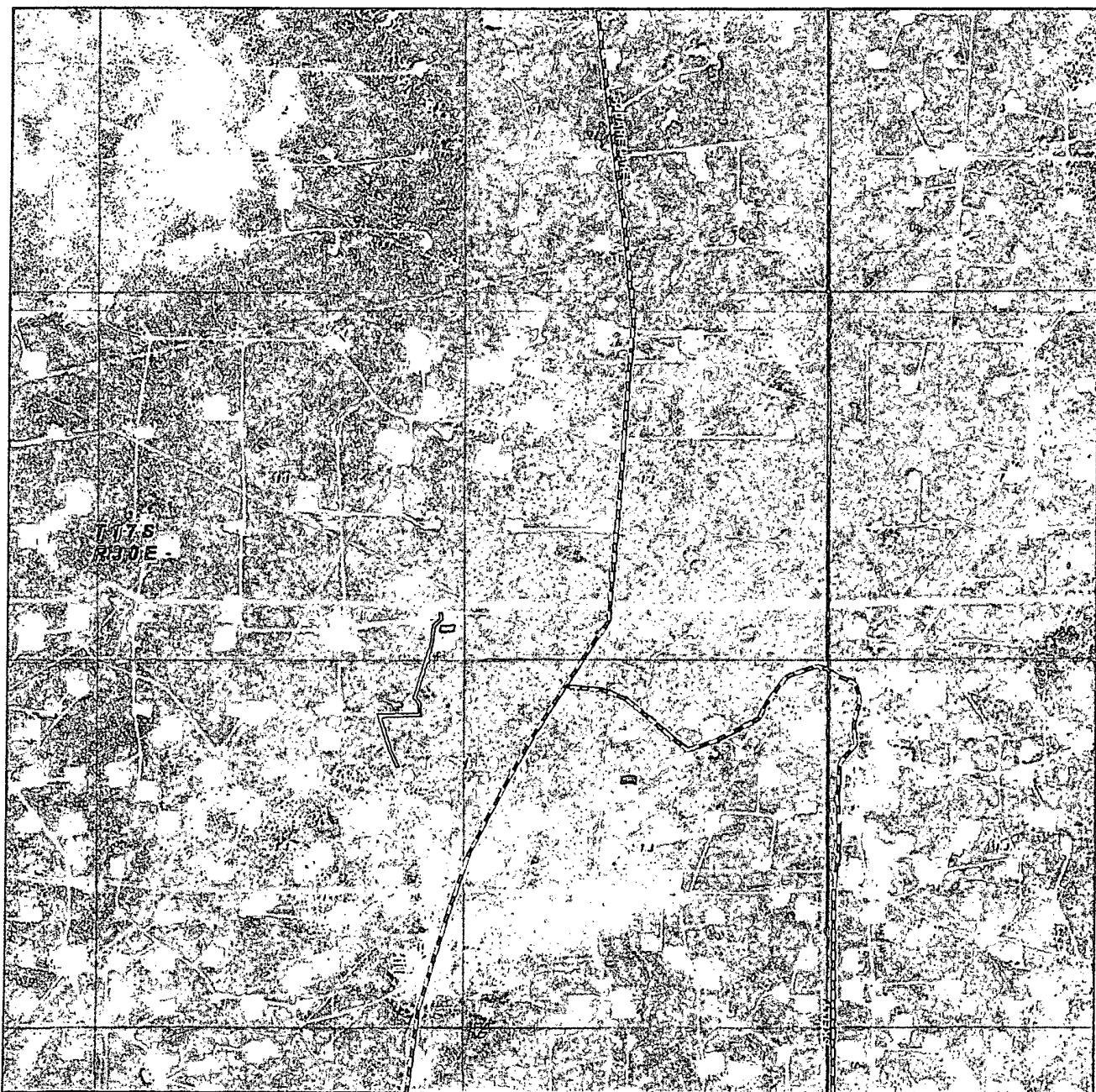
1000 0 1000 2000 FEET  
 Surface Ex. C2

**BURNETT OIL COMPANY, INC.**

REF: PROPOSED FLOWLINE TO THE GISSLER "A" #38

A FLOWLINE CROSSING USA LAND IN  
 SECTIONS 11&14, TOWNSHIP 17 SOUTH, RANGE 30 EAST,  
 N.M.P.M., EDDY COUNTY, NEW MEXICO.

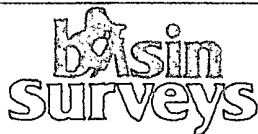
Survey Date: 01-05-2011 Sheet 1 of 1 Sheets



**GISSLER "A" #38**

Located 1650' FNL and 850' FEL  
 Section 14, Township 17 South, Range 30 East,  
 N.M.P.M., Eddy County, New Mexico.

*Surface ex. A2*



focused on excellence  
 in the oilfield

P.O. Box 1786  
 1120 N. West County Rd.  
 Hobbs, New Mexico 88241  
 (575) 393-7316 - Office  
 (575) 392-2206 - Fax  
 bosinsurveys.com

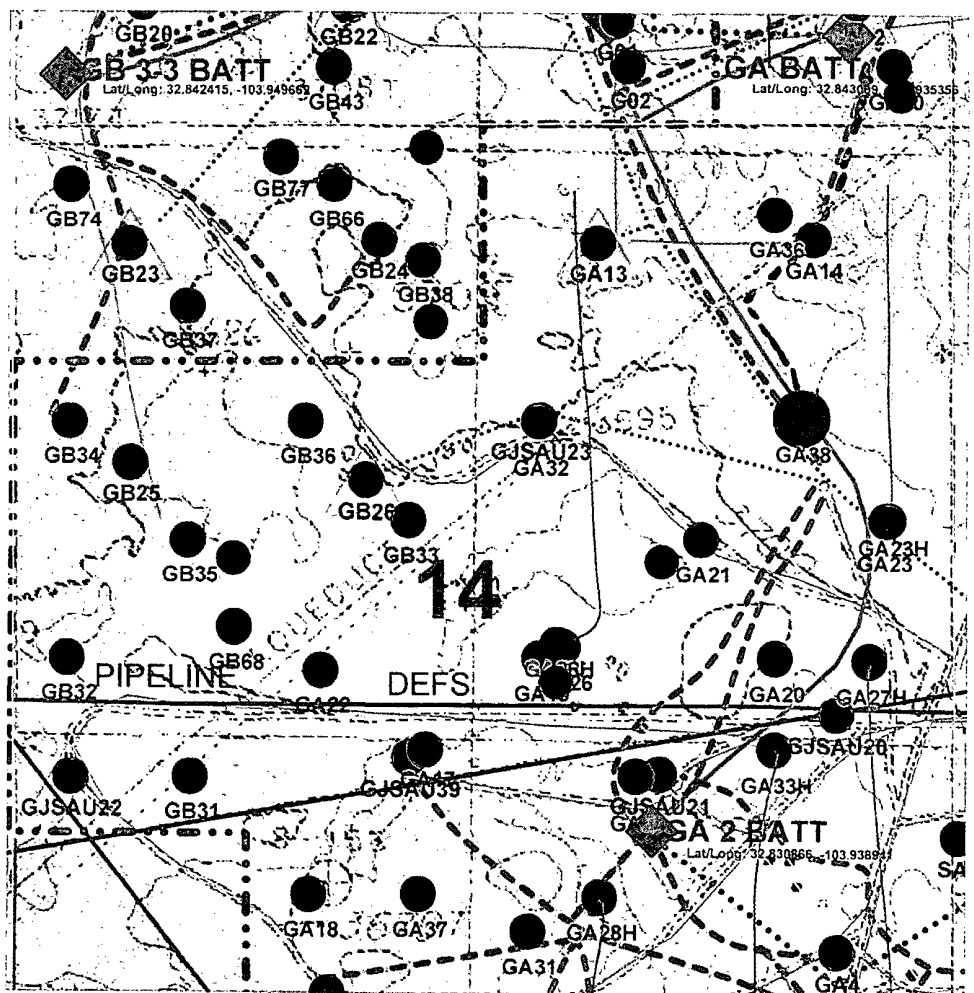
W.O. Number. JMS 23943

Scale: 1" = 2000'

YELLOW TINT - USA LAND  
 BLUE TINT - STATE LAND  
 NATURAL COLOR - FEE LAND

**BURNETT OIL  
 COMPANY, INC.**





**Well Names**

- GA = Gissler A
- GB = Gissler B
- JA = Jackson A
- JB = Jackson B
- SA = Stevens A
- SB = Stevens B
- GJSA = Grayburg Jackson San Andres

<b>Burnett Oil Co., Inc.</b> <b>6666</b>		
Gissler A38 Proposed Well Location (Map Reflects Burnett Operated Wells Only) Eddy County, New Mexico		
Author: C.L.K. Eng Tech	Date: December 28, 2010	
Scale: 1" = 750'		

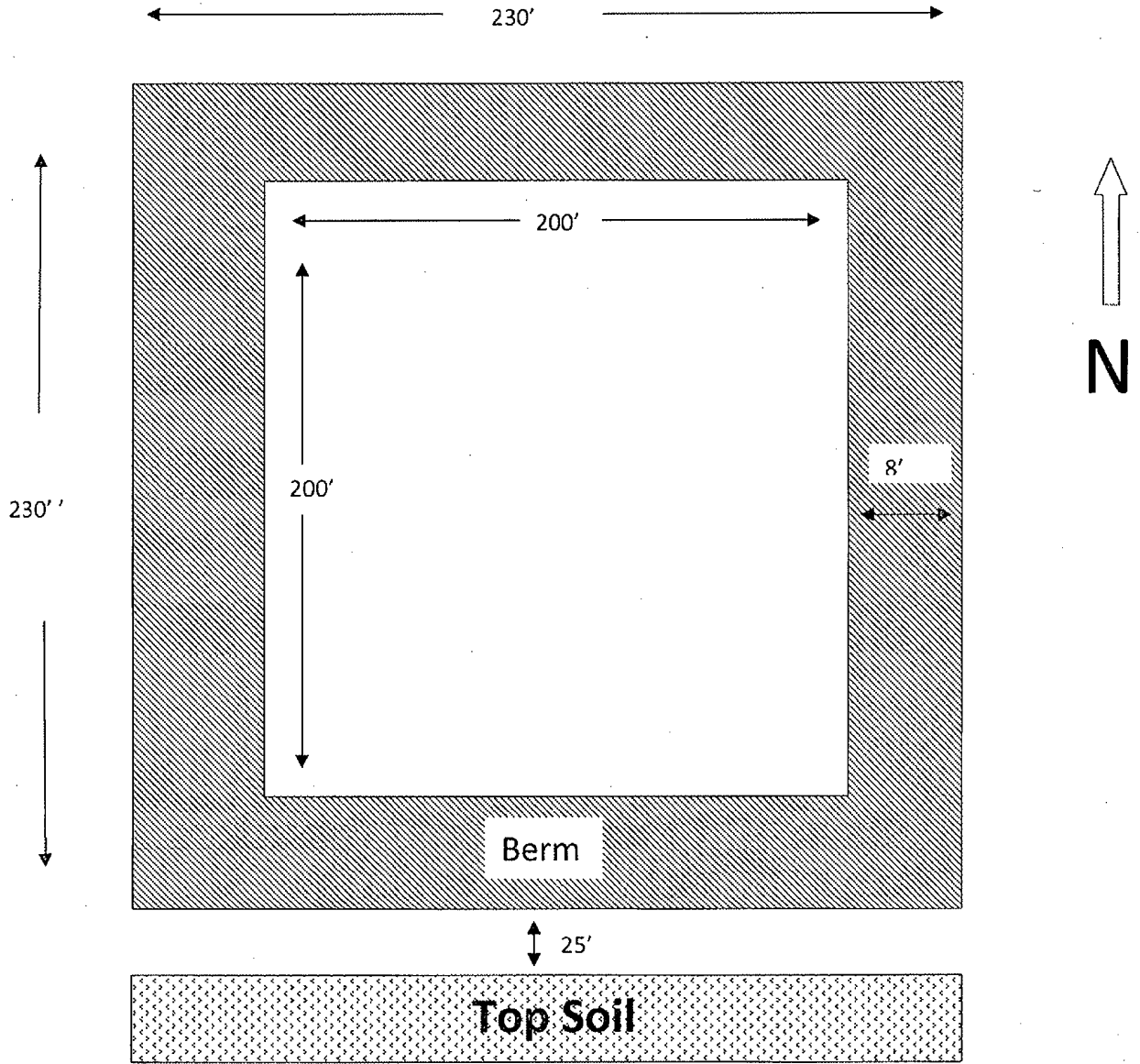


**- 2500' flow line**

**Gissler A38**  
**T17S, R30E, Sect 14, Unit H, NMLC029338A**  
**1650' FNL, 850' FEL, GA Battery**  
**Lat/Long: 32.837138, -103.936223**

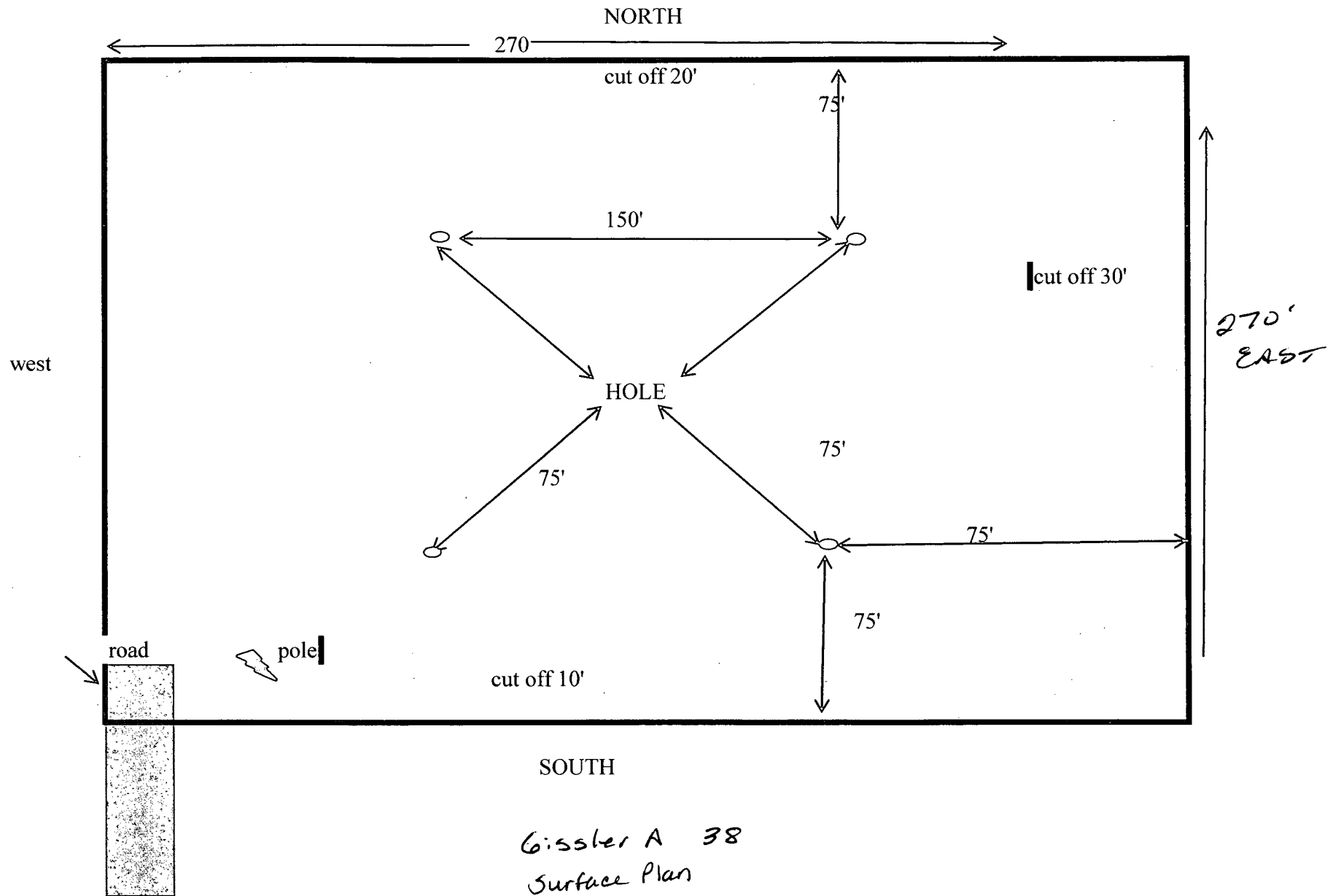
SURFACE EXHIBIT B

# PARTITION FRAC POND



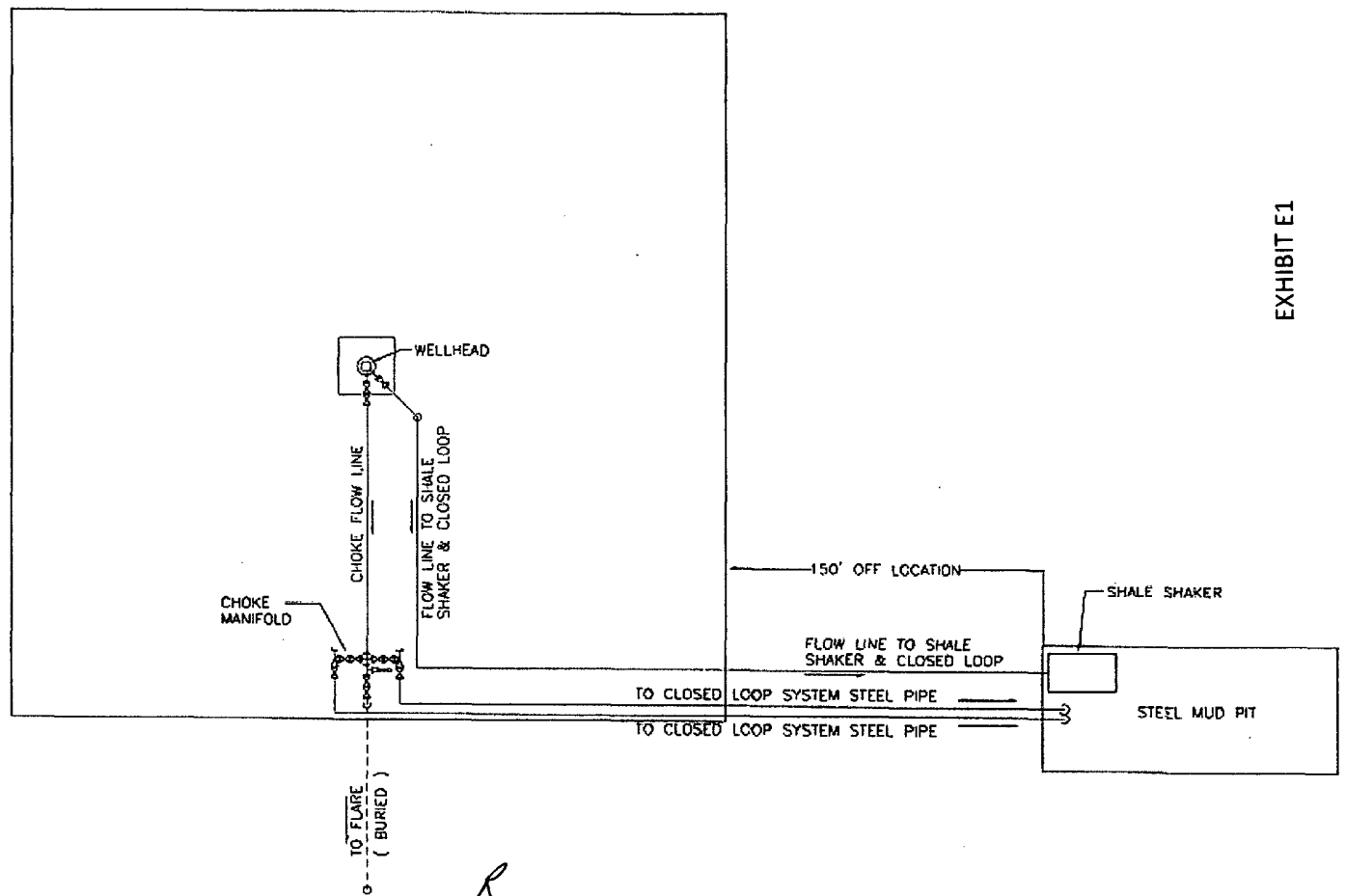
Pond depth: 14' feet

Top Soil will sit on Southeast corner to avoid pipelines



Gissler A 38  
 Surface Plan  
 Reclamation Exhibit F

EXHIBIT E1



*R*  
BUNETT OIL COMPANY, INC.  
DRILLING OPERATIONS  
WELL PAD PLAN LAYOUT