



Devon Energy Corporation
20 North Broadway
Oklahoma City, Oklahoma 73102-8260

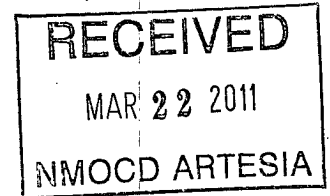
Hydrogen Sulfide (H₂S) Contingency Plan

For

Aldabra "27" Fed. COM 1H

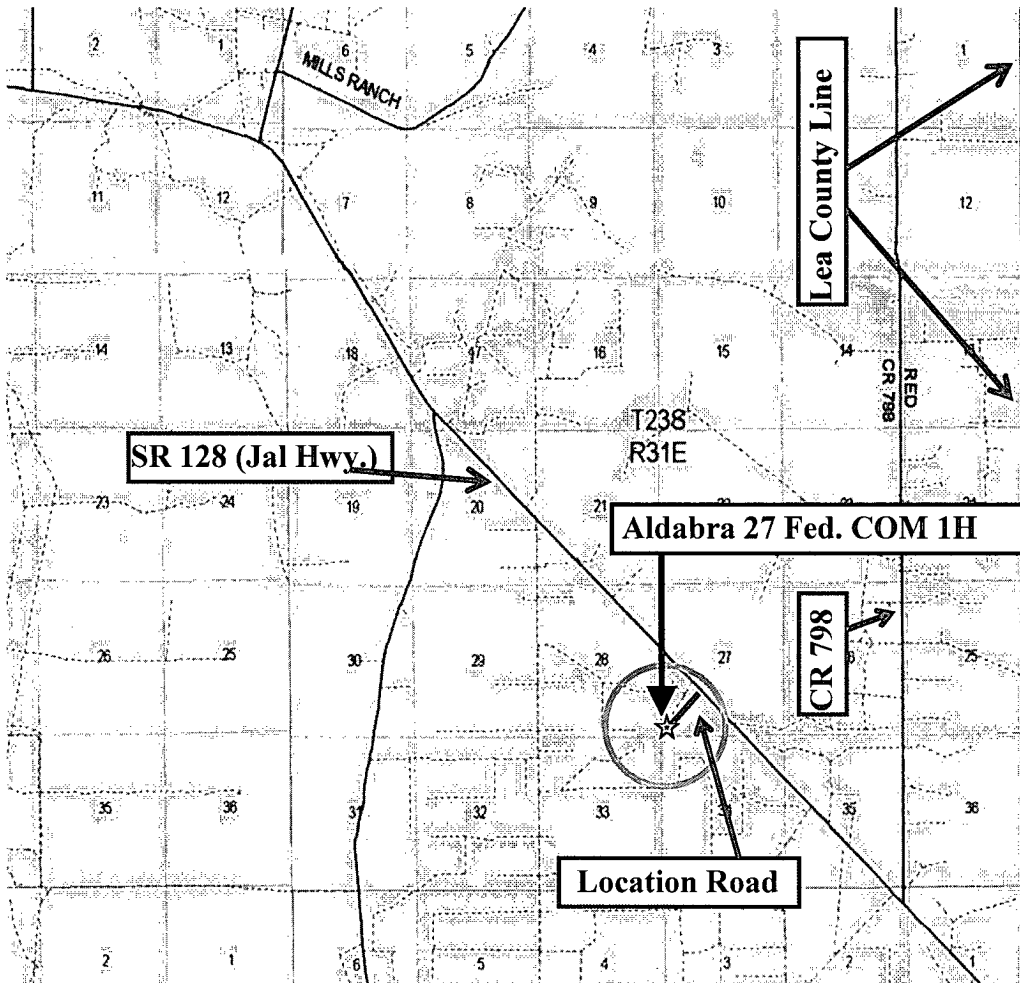
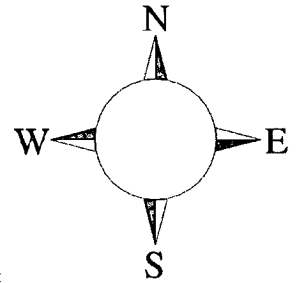
LAT. = 32°16'07.950"N (NAD83)
LONG = 103°46.24.039"W
200' FSL & 275' FEL,
Sec-27, T-23S R-31E

Eddy County NM



Aldabra "27" Fed. COM 1H

This is an open drilling site. H₂S monitoring equipment and emergency response equipment will be used within 500' of zones known to contain H₂S, including warning signs, wind indicators and H₂S monitor.



**Assumed 100 ppm ROE = 3000' (Radius of Exposure)
100 ppm H₂S concentration shall trigger activation of this plan.**

Escape

Crews shall escape upwind of escaping gas in the event of an emergency release of gas. Escape can be facilitated North approximately 200 ft then North East on lease road for approximately .25 miles then to SR128. Crews should then block entrance to the location and both directions of State Road 128 so as not to allow anyone traversing into a hazardous area.. The New Mexico State Police should then be called who are the designated Incident Commanders. The blockade should be at a safe distance outside of the ROE. Evacuation should continue, if necessary, further down either direction of State Road 128 (Jal Hwy.) There are no homes or buildings in or near the ROE.

Assumed 100 ppm ROE = 3000'

100 ppm H₂S concentration shall trigger activation of this plan.

Emergency Procedures

In the event of a release of gas containing H₂S, the first responder(s) must

- Isolate the area and prevent entry by other persons into the 100 ppm ROE.
- Evacuate any public places encompassed by the 100 ppm ROE.
- Be equipped with H₂S monitors and air packs in order to control the release.
- Use the "buddy system" to ensure no injuries occur during the response
- Take precautions to avoid personal injury during this operation.
- Contact operator and/or local officials to aid in operation. See list of phone numbers attached.
- Have received training in the
 - Detection of H₂S, and
 - Measures for protection against the gas,
 - Equipment used for protection and emergency response.

Ignition of Gas Source

Should control of the well be considered lost and ignition considered, take care to protect against exposure to Sulfur Dioxide (SO₂). Intentional ignition must be coordinated with the NMOCD and local officials. Additionally the NM State Police may become involved. NM State Police shall be the Incident Command on scene of any major release. Take care to protect downwind whenever there is an ignition of the gas

Characteristics of H₂S and SO₂

Common Name	Chemical Formula	Specific Gravity	Threshold Limit	Hazardous Limit	Lethal Concentration
Hydrogen Sulfide	H ₂ S	1.189 Air = 1	10 ppm	100 ppm/hr	600 ppm
Sulfur Dioxide	SO ₂	2.21 Air = 1	2 ppm	N/A	1000 ppm

Contacting Authorities

Devon Energy Corp. personnel must liaison with local and state agencies to ensure a proper response to a major release. Additionally, the OCD must be notified of the release as soon as possible but no later than 4 hours. Agencies will ask for information such as type and volume of release, wind direction, location of release, etc. Be prepared with all information available. The following call list of essential and potential responders has been prepared for use during a release. Devon Energy Corp. Company response must be in coordination with the State of New Mexico's 'Hazardous Materials Emergency Response Plan' (HMER)

Devon Energy Corp. Company Call List

Artesia (575)	Cellular	Office	Home
Foreman – Robert Bell.....	748-7448	748-0178	746-2991
Asst. Foreman –Tommy Polly.....	748-5290	748-0165	748-2846
Don Mayberry.....	748-5235	748-0164	746-4945
Montral Walker.....	390-5182	748-0193	936-414-6246
Engineer – Marcos Ortiz.....	(405) 317-0666.....	(405) 552-8152.....	(405) 381-4350

Agency Call List

Lea County (575)	Hobbs	
	State Police	392-5588
	City Police	397-9265
	Sheriff’s Office.....	393-2515
	Ambulance.....	911
	Fire Department.....	397-9308
	LEPC (Local Emergency Planning Committee)	393-2870
	NMOCD	393-6161
	US Bureau of Land Management	393-3612

Eddy County (575)	Carlsbad	
	State Police	885-3137
	City Police	885-2111
	Sheriff’s Office.....	887-7551
	Ambulance.....	911
	Fire Department.....	885-2111
	LEPC (Local Emergency Planning Committee).....	887-3798
	US Bureau of Land Management	887-6544
	New Mexico Emergency Response Commission (Santa Fe) ...	(505)476-9600
	24 HR	(505) 827-9126
	National Emergency Response Center (Washington, DC) ..	(800) 424-8802

Emergency Services

	Boots & Coots IWC	1-800-256-9688 or (281) 931-8884
	Cudd Pressure Control.....	(915) 699-0139 or (915) 563-3356
	Halliburton	(575) 746-2757
	B. J. Services.....	(575) 746-3569
<i>Give</i>	Flight For Life - Lubbock, TX	(806) 743-9911
<i>GPS</i>	Aerocare - Lubbock, TX	(806) 747-8923
<i>position:</i>	Med Flight Air Amb - Albuquerque, NM	(575) 842-4433
	Lifeguard Air Med Svc. Albuquerque, NM	(575) 272-3115

Prepared in conjunction with
Wade Rohloff

