

SURFACE USE AND OPERATING PLAN

1. Existing & Proposed Access Roads

- A. The well site survey and elevation plat for the proposed well is shown in Exhibit #1. It was staked by John West Engineering, Hobbs, NM.
- B. All roads to the location are shown in the topographic map Exhibit #2. The existing lease roads are illustrated and are adequate for travel during drilling and production operations. Upgrading existing roads prior to drilling the well will be done where necessary.
- C. Directions to Location: From the intersection of U.S. Hwy #82 and County Rd. #215 (Kewanee Rd.), go West on U.S. Hwy #82 approx 0.2 miles. Turn Left and go South approx. 150 feet. Turn Right and go West approx. 0.6 miles. Turn Left and go South approx. 0.4 miles. Turn Right and go West approx. 0.1 mile to the existing Burch Keely Unit #124 Well. This location stake is approx 218 feet West of the existing Burch Keely Unit #124 Well. See Vicinity Map, Exhibit #3
- D. Routine grading and maintenance of existing roads will be conducted as necessary to maintain their condition as long as any operations continue on this lease.

2. Proposed Access Road:

Exhibit #4 shows that 0' of new access road will be required for this location. If any road is required it will be constructed as follows:

- A. The maximum width of the running surface will be 14'. The road will be crowned, ditched and constructed of 6" rolled and compacted caliche. Ditches will be at 3:1 slope and 4 feet wide. Water will be diverted where necessary to avoid ponding, prevent erosion, maintain good drainage, and to be consistent with local drainage patterns.
- B. The average grade will be less than 1%.
- C. No turnouts are planned.
- D. No culverts, cattleguard, gates, low water crossings or fence cuts are necessary.
- E. Surfacing material will consist of native caliche. Caliche will be obtained from the nearest BLM approved caliche pit or reserve pit area.

3. Location of Existing Well:

Exhibit #5 shows all existing wells within a one-mile radius of this well.

As shown on this plat there are numerous wells producing from the San Andres and Yeso formations.

4. Location of Existing and/or Proposed Facilities:

- A. COG Operating LLC does operate a production facility on this lease.
- B. If the well is productive, contemplated facilities will be as follows:
 - 1) Production will be sent to the Burch Keely Satellite E located at the BKU#232 well pad in Section 23. The facility location is shown in Exhibit #5.
 - 1) The tank battery and facilities including all flow lines and piping will be installed according to API specifications.
 - 2) Any additional caliche will be obtained from a BLM approved caliche pit. Any additional construction materials will be purchased from contractors.
 - 3) Proposed flow lines, will follow an archaeologically approved route to the Burch Keely Satellite E located at the BKU#232 well pad in Section 23. The flowline will be SDR 7 3" poly line laid on the surface and will be approximately 1.11 miles in length.
 - 4) It will be necessary to run electric power if this well is productive. Power will be provided by CVE and they will submit a separate plan and ROW for service to the well location.
 - 5) If the well is productive, rehabilitation plans will include the following:
 - a) The original topsoil from the well site will be returned to the location, and the site will be re-contoured as close as possible to the original site.

5. Location and Type of Water Supply:

The well will be drilled with combination brine and fresh water mud system as outlined in the drilling program. The water will be obtained from commercial water stations in the area and hauled to location by transport truck over the existing and proposed access roads shown in Exhibit #2. If a commercial fresh water source is nearby, fast line may be laid along existing road ROW's and fresh water pumped to the well. No water well will be drilled on the location.

6. Source of Construction Materials:

All caliche required for construction of the drill pad and proposed new access road (approximately 2500 cubic yards) will be obtained from a BLM approved caliche pit or the reserve pit.

7. Methods of Handling Water Disposal:

- A. The well will be drilled utilizing a closed loop mud system. Drill cuttings will be held in roll-off style mud boxes and taken to an NMOCD approved disposal site.
- B. Drilling fluids will be contained in steel mud pits.
- C. Water produced from the well during completion will be held temporarily in steel tanks and then taken to an NMOCD approved commercial disposal facility.
- D. Garbage and trash produced during drilling or completion operations will be collected in a trash bin and hauled to an approved landfill. No toxic waste or hazardous chemicals will be produced by this operation.
- E. After the rig is moved out and the well is either completed or abandoned, all waste materials will be cleaned up within 30 days. In the event of a dry hole only a dry hole marker will remain.

8. Ancillary Facilities:

No airstrip, campsite or other facilities will be built as a result of the operation on this well.

9. Well Site Layout:

- A. The drill pad layout, with elevations staked by John West Engineering, is shown in Exhibit #4. Dimensions of the pad and pits are shown on Exhibit #6. V door direction is South. Topsoil, if available, will be stockpiled per BLM specifications. Because the pad is almost level no major cuts will be required.
- B. Exhibit #6 also shows the proposed orientation of closed loop system and access road. No permanent living facilities are planned, but a temporary foreman/toolpusher's trailer will be on location during the drilling operations.

10. Plans for Restoration of the Surface:

- A. The location and road will be rehabilitated as recommended by the BLM.
- B. Upon completion of proposed operations, if the well is completed, the reserve pit area will be closed as outlined in Section 4.6 above within the same prescribed time. Any additional caliche required for facilities will be obtained from a BLM approved caliche pit. Topsoil removed from the drill site will be used to re-contour the pit area to its original natural level and re-seeded as per BLM specifications.

11. Surface Ownership:

- A. The surface is owned by the U.S. Government and is administered by the Bureau of Land Management. The surface is multiple uses with the primary uses of the region for grazing of livestock and the production of oil and gas.
- B. The surface tenant for this site is Bogel Farms, Lewis Derrick, P O Box 441, Artesia, NM 88211.
- C. The proposed road routes and surface location will be restored as directed by the BLM.

12. Other Information:

- A. The area around the well site is grassland and the topsoil is sandy. The vegetation is moderately sparse with native prairie grasses, some mesquite and shinnery oak. No wildlife was observed but it is likely that mule deer, rabbits, coyotes and rodents traverse the area.
- B. There is no permanent or live water in the immediate area.
- C. There are no dwellings within 2 miles of this location.
- D. If needed, a Cultural Resources Examination is being prepared by Southern New Mexico Archaeological Services, Inc. P.O. Box 1, Bent New Mexico, 88314, phone # 505-671-4797 and the results will be forwarded to your office in the near future. Otherwise, **COG will be participating in the Permian Basin MOA Program.**

13. Bond Coverage:

Bond Coverage is Nationwide Bond # 000215

14. Lessee's and Operator's Representative:

The COG Operating LLC representative responsible for assuring compliance with the surface use plan is as follows:

John Coffman,
Drilling Superintendent
COG Operating LLC
550 W. Texas, Suite 1300
Midland, TX 79701
Phone (432) 683-7443 (office)
(432) 631-9762 (cell)

Erick Nelson.
Division Operations Manager
COG Operating LLC
550 W. Texas, Suite 1300
Midland, TX 79701
Phone (505) 746-2210 (office)
(432) 238-7591 (cell)

*Surface Use Plan
COG Operating, LLC
Burch Keely Unit #725
835' FSL & 134' FWL
990" FSL & 330' FWL
Section 23, T-17-S, R-29-E, UL M
Eddy County, New Mexico*

I hereby certify that I, or persons under my direct supervision, have inspected the drill site and access road proposed herein; that I am familiar with the conditions that presently exist; that I have full knowledge of State and Federal laws applicable to this operation; that the statements made in this APD package are, to the best of my knowledge, true and correct; and that the work associated with the operations proposed herein will be performed in conformity with this APD package and the terms and conditions under which it is approved. I also certify that I, or COG Operating, LLC, am responsible for the operations conducted under this application. These statements are subject to the provisions of 18 U.S.C. 1001 for the filing of false statements. Executed this 14th day of October, 2010.

Signed: Carl Bird

Printed Name: Carl Bird
Position: Drilling Engineer
Address: 550 W. Texas, Suite 1300, Midland, Texas 79701
Telephone: (432) 683-7443
Field Representative (if not above signatory): Same
E-mail: cbird@conchoresources.com

Exhibits:

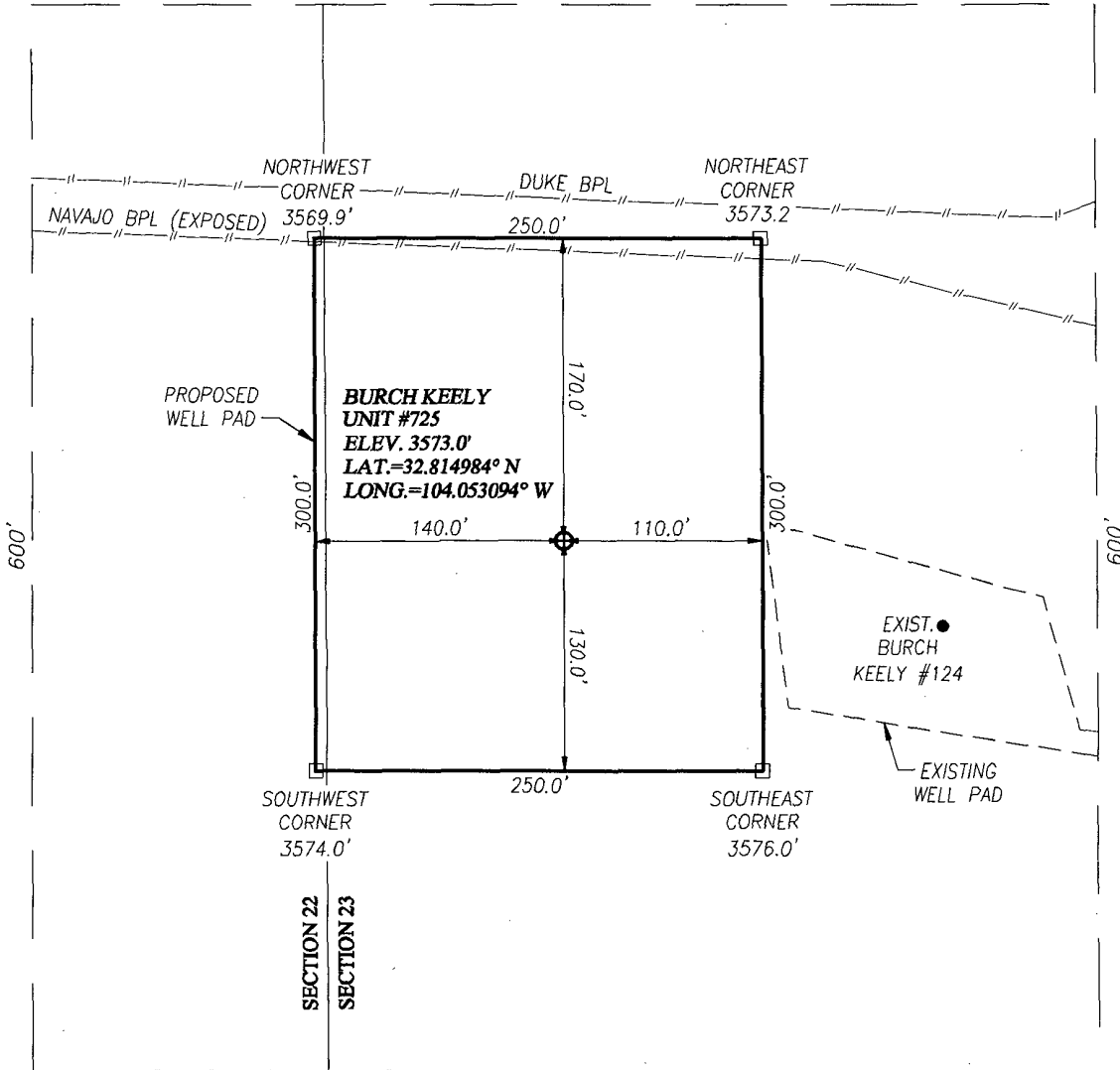
- Exhibit #1 Wellsite and Elevation Plat
Form C-102 Well location and acreage dedication plat**
- Exhibit #2 Topographic Map (West)**
- Exhibit #3 Vicinity Map and area roads**
- Exhibit #4 Elevation Plat (West)**
- Exhibit #5 Topographic extract showing wells, roads and flowlines**
- Exhibit #6 Pad Layout and orientation**
- Exhibit #7 H2S Signage**
- Exhibit #8 H2S Equipment location**
- Exhibit #9 BOP and Choke diagrams**
- Exhibit #10 Form C-144 NMOCD pit permit application**
- Exhibit #11 1 Mile Radius List and Map showing all wells permitted, producing
and plugged**

SECTION 23, TOWNSHIP 17 SOUTH, RANGE 29 EAST, N.M.P.M.
 EDDY COUNTY NEW MEXICO

3568.2'

600'

3580.3'



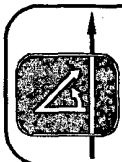
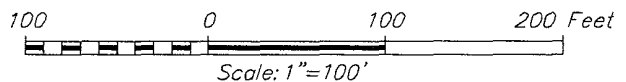
3586.3'

600'

3577.4'

DIRECTIONS TO LOCATION

FROM THE INTERSECTION OF U.S. HWY. #82 AND CO. RD. #215 (KEWANNE RD.), GO WEST ON U.S. HWY. #82 APPROX. 0.2 MILES. TURN LEFT AND GO SOUTH APPROX. 150 FEET. TURN RIGHT AND GO WEST APPROX. 0.6 MILES. TURN LEFT AND GO SOUTH APPROX. 0.4 MILES. TURN RIGHT AND GO WEST APPROX. 0.1 MILE TO THE EXISTING BURCH KEELY UNIT #124 WELL. THIS LOCATION STAKE IS APPROX. 218 FEET WEST OF THE EXISTING WELL.



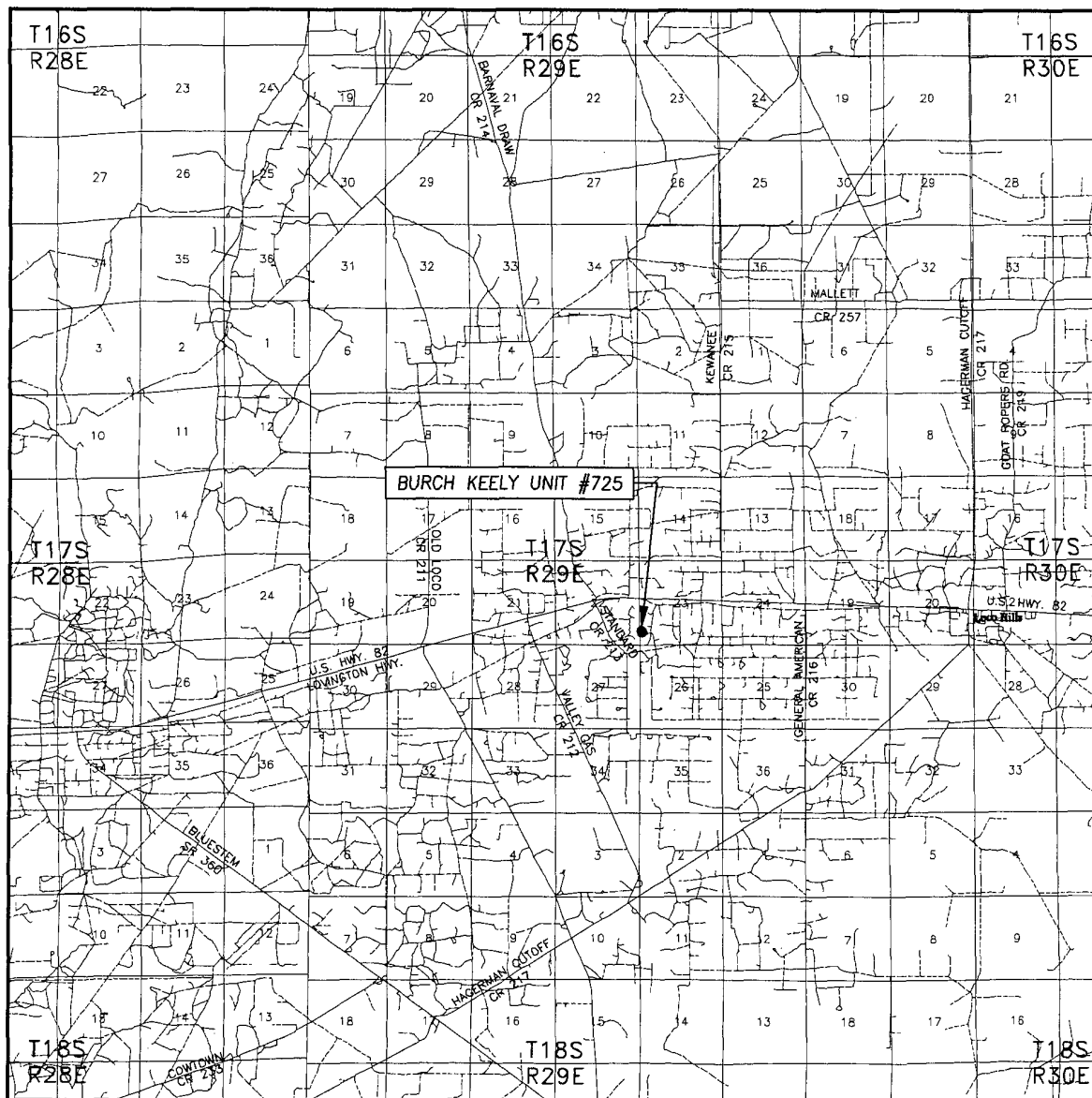
PROVIDING SURVEYING SERVICES
 SINCE 1946
JOHN WEST SURVEYING COMPANY
 412 N. DAL PASO
 HOBBS, N.M. 88240
 (575) 393-3117

COG OPERATING, LLC

BURCH KEELY UNIT #725 WELL
 LOCATED 835 FEET FROM THE SOUTH LINE
 AND 134 FEET FROM THE WEST LINE OF SECTION 23,
 TOWNSHIP 17 SOUTH, RANGE 29 EAST, N.M.P.M.,
 EDDY COUNTY, NEW MEXICO

Survey Date: 12/10/10	Sheet 1 of 1 Sheets
W.O. Number: 10.11.1806	Dr By: DSS
Date: 12/21/10	Rev 1: N/A
Rel. W.O. 10111506	10111806
Scale: 1"=100'	

VICINITY MAP



SCALE: 1" = 2 MILES

SEC. 23 TWP. 17-S RGE. 29-E

SURVEY N.M.P.M.


COUNTY EDDY STATE NEW MEXICO

DESCRIPTION 835' FSL & 134' FWL

ELEVATION 3573'

OPERATOR COG OPERATING, LLC

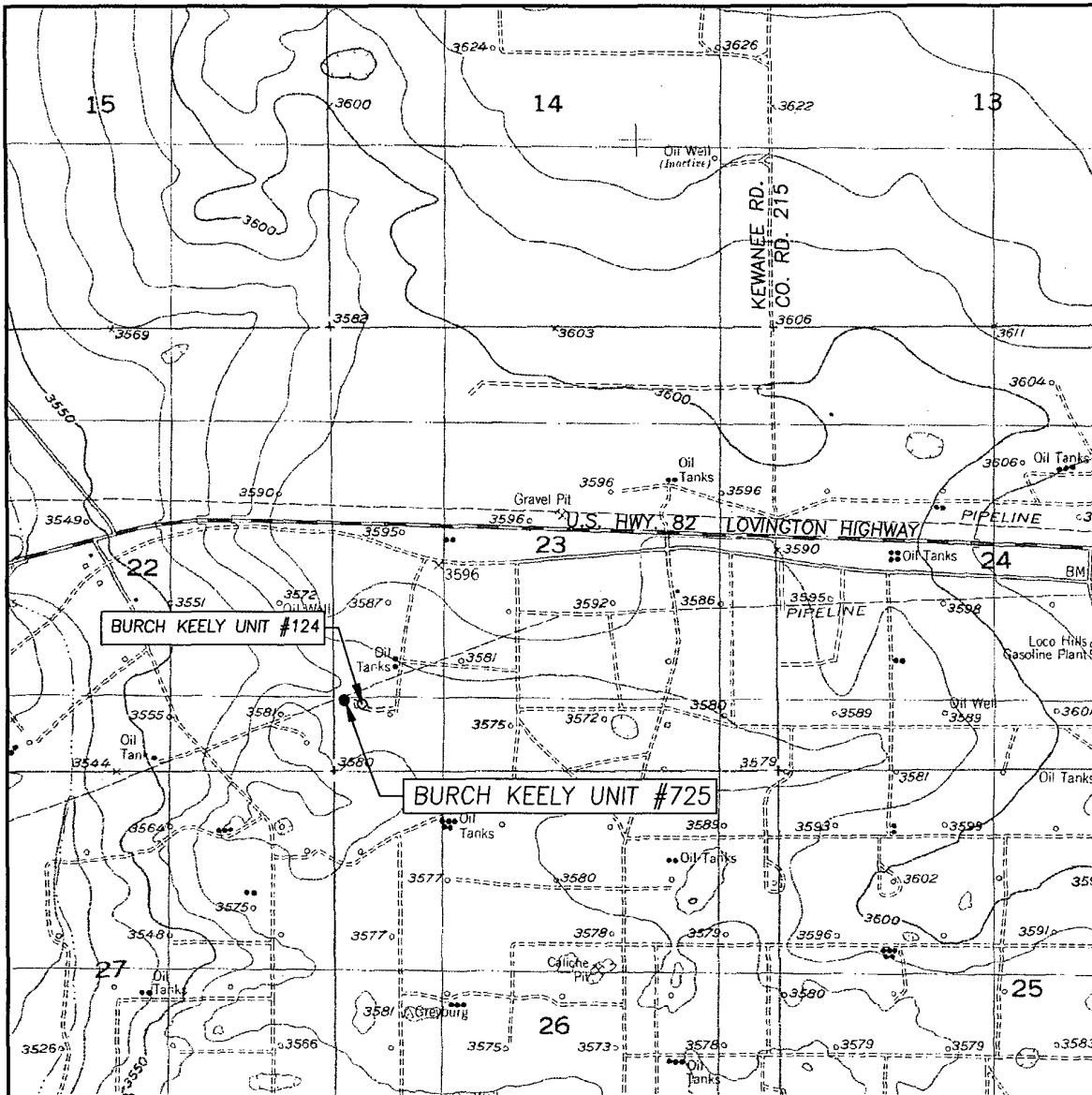
LEASE BURCH KEELY UNIT



PROVIDING SURVEYING SERVICES
SINCE 1946

JOHN WEST SURVEYING COMPANY
412 N. DAL PASO
HOBBS, N.M. 88240
(575) 393-3117

LOCATION VERIFICATION MAP



SCALE: 1" = 2000'

CONTOUR INTERVAL:
RED LAKE SE, N.M. - 10'

SEC. 23 TWP. 17-S RGE. 29-E

SURVEY _____ N.M.P.M.

COUNTY EDDY STATE NEW MEXICO


DESCRIPTION 835' FSL & 134' FWL

ELEVATION 3573'

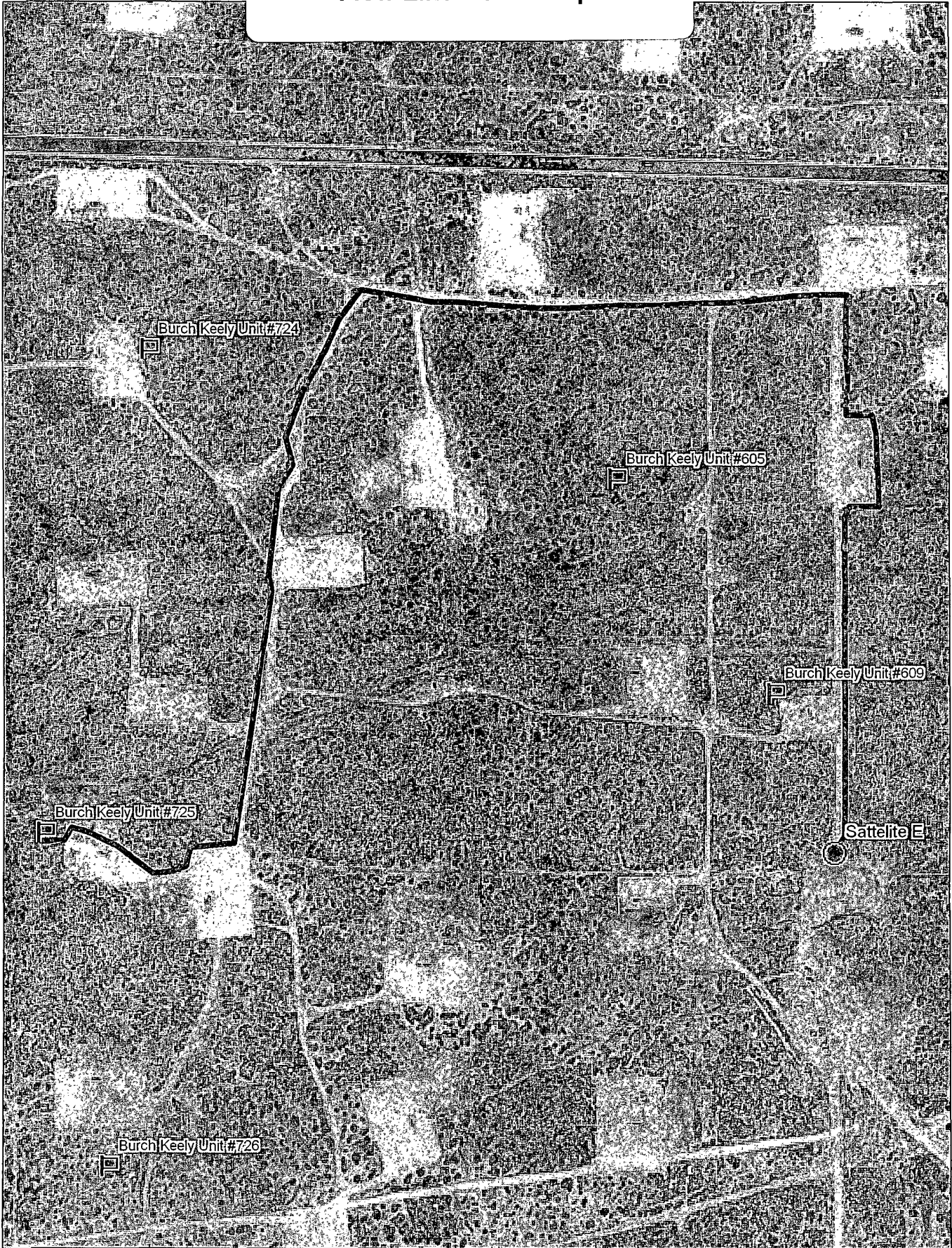
OPERATOR COG OPERATING, INC.

LEASE BURCH KEELY UNIT

U.S.G.S. TOPOGRAPHIC MAP
RED LAKE SE, N.M.



PROVIDING SURVEYING SERVICES
SINCE 1946
JOHN WEST SURVEYING COMPANY
412 N. DAL PASO
HOBBS, N.M. 88240
(575) 393-3117



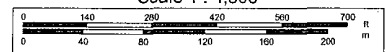
Data use subject to license.

© DeLorme. XMap® 7.

www.delorme.com



Scale 1 : 4,800



1" = 400.0 ft

Data Zoom 14-7

Offset wells to Burch Keely #725

API#	Operator	County	Legal	Lease	Well#	Date Issued	Permitted Depth	Permit TVD	Images	Doc	Total Depth	Well Type	Well Status	Permit#
30-015-37680	MARBOB ENERGY CORP	EDDY	S:27, T:17S, R:29E	BARNSDALL FEDERAL	16	3/10/2010	6,150		Yes	link	6,150	PO	Active Permit	TEMP1468129565
30-015-37681	MARBOB ENERGY CORP	EDDY	S:27, T:17S, R:29E	BARNSDALL FEDERAL	17	3/10/2010	6,150		Yes	link	6,150	PO	Active Permit	TEMP856962777
30-015-37642	MARBOB ENERGY CORP	EDDY	S:22, T:17S, R:29E	MARY FEDERAL	3	2/18/2010	6,360	6,350	Yes	link	6,360	PO	Active Permit	TEMP797723794
30-015-37643	MARBOB ENERGY CORP	EDDY	S:27, T:17S, R:29E	BARNSDALL FEDERAL	18	2/13/2010	6,150		Yes	link	6,150	PO	Active Permit	TEMP1398424572
30-015-37571	COG OPERATING LLC	EDDY	S:22, T:17S, R:29E	GJ WEST COOP UNIT	263	2/10/2010	5,550		Yes	link	5,550	PO	Active Permit	TEMP837532792
30-015-37574	COG OPERATING LLC	EDDY	S:15, T:17S, R:29E	GJ WEST COOP UNIT	273	2/10/2010	5,550		Yes	link	5,550	PO	Active Permit	TEMP257030212
30-015-37439	COG OPERATING LLC	EDDY	S:22, T:17S, R:29E	G J WEST COOP UNIT	265	12/21/2009	5,600		Yes	link	5,630	O	Active Permit	TEMP1124110498
30-015-26753	COG OPERATING LLC	EDDY	S:22, T:17S, R:29E	GJ WEST COOP UNIT	96	10/23/2009	5,600		Yes	link	4,496	PO	Pumping	TEMP1531519804
30-015-37232	COG OPERATING LLC	EDDY	S:22, T:17S, R:29E	G J WEST COOP UNIT	266	8/21/2009	5,550		Yes	link	5,530	O	Active Permit	TEMP1780990023
30-015-37152	COG OPERATING LLC	EDDY	S:22, T:17S, R:29E	G J WEST COOP UNIT	260	7/9/2009	5,550		Yes	link	5,524	O	Active Permit	TEMP1470945970
30-015-37130	MARBOB ENERGY CORP	EDDY	S:26, T:17S, R:29E	BURCH KEELY UNIT	906	6/15/2009	4,800		Yes	link	4,800	PO	Active Permit	TEMP490492453
30-015-34979	COG OPERATING LLC	EDDY	S:27, T:17S, R:29E	RJ UNIT	142	6/15/2009	3,600		Yes	link	3,600	PO	Active Permit	TEMP2021394123
30-015-37139	COG OPERATING LLC	EDDY	S:27, T:17S, R:29E	RJ UNIT	142	6/15/2009	3,600		Yes	link	3,600	PO	Active Permit	TEMP816116731
30-015-37140	COG OPERATING LLC	EDDY	S:27, T:17S, R:29E	RJ UNIT	141	6/15/2009	3,600		Yes	link	3,600	PI	Active Permit	TEMP700802686
30-015-37114	MARBOB ENERGY CORP	EDDY	S:22, T:17S, R:29E	DODD FEDERAL UNIT	505	6/10/2009	5,000		Yes	link	5,000	PO	Active Permit	TEMP760961590
30-015-37115	MARBOB ENERGY CORP	EDDY	S:22, T:17S, R:29E	DODD FEDERAL UNIT	500	6/10/2009	5,000		Yes	link	6,350	O	Active Permit	TEMP534479735
30-015-25659	COG OPERATING LLC	EDDY	S:22, T:17S, R:29E	GJ WEST COOP UNIT	85	6/4/2009	6,000		Yes	link	4,580	PO	Pumping	TEMP605054437
30-015-37091	MARBOB ENERGY CORP	EDDY	S:15, T:17S, R:29E	DODD FEDERAL UNIT	531	5/19/2009	5,000		Yes	link	5,000	O	Active Permit	TEMP1656495351
30-015-37072	COG OPERATING LLC	EDDY	S:22, T:17S, R:29E	G J WEST COOP UNIT	261	5/15/2009	5,550		Yes	link	5,550	PO	Active Permit	TEMP1758589353
	COG													

30-015-37072	OPERATING LLC	EDDY	S:22, T:17S, R:29E	G J WEST COOP UNIT	261	5/15/2009	5,550		Yes	link	5,550	PO	Active Permit	TEMP253178563
30-015-25657	COG OPERATING LLC	EDDY	S:22, T:17S, R:29E	GJ WEST COOP UNIT	84	11/13/2008	5,700		Yes	link	4,510	PO	Pumping	TEMP1790120640
30-015-26686	COG OPERATING LLC	EDDY	S:22, T:17S, R:29E	GJ WEST COOP UNIT	95	11/13/2008	5,700		Yes	link	4,518	PO	Pumping	TEMP744356840
30-015-25088	COG OPERATING LLC	EDDY	S:22, T:17S, R:29E	GJ WEST COOP UNIT	62	10/20/2008	5,700		Yes	link	3,508	PO	Pumping	TEMP672863775
30-015-26754	COG OPERATING LLC	EDDY	S:22, T:17S, R:29E	GJ WEST COOP UNIT	97	8/22/2008	5,600		Yes	link	5,530	O	Pumping	TEMP734665546
30-015-28591	COG OPERATING LLC	EDDY	S:22, T:17S, R:29E	GJ WEST COOP UNIT	135	4/30/2008	5,800		Yes	link	5,505	O	Pumping	TEMP2055589195
30-015-36226	COG OPERATING LLC	EDDY	S:22, T:17S, R:29E	G J WEST COOP UNIT	191	3/24/2008	5,500		Yes	link	5,463	O	Active Permit	TEMP1898839540
30-015-36179	MARBOB ENERGY CORP	EDDY	S:23, T:17S, R:29E	BURCH KEELY UNIT	995	2/22/2008	4,800		Yes	link	4,616	O	Active Permit	TEMP950216352
30-015-36178	MARBOB ENERGY CORPORATION or MARBOB ENERGY CORP	EDDY	S:23, T:17S, R:29E	BURCH KEELY UNIT	996	2/22/2008	4,800		Yes	link	4,607	O	Active Permit	TEMP1351025048
30-015-36057	COG OPERATING LLC	EDDY	S:22, T:17S, R:29E	G J WEST COOP UNIT	185	1/22/2008	5,450		Yes	link	5,528	O	Active Permit	TEMP1445503484
30-015-35752	COG OPERATING LLC	EDDY	S:22, T:17S, R:29E	G J WEST COOP UNIT	175	8/27/2007	5,600		Yes	link	5,629	O	Active Permit	TEMP127469004
30-015-35655	COG OPERATING LLC	EDDY	S:22, T:17S, R:29E	G J WEST COOP UNIT	165	6/7/2007	5,600		Yes	link	5,622	O	Active	TEMP190836818
30-015-35582	COG OPERATING LLC	EDDY	S:22, T:17S, R:29E	G J WEST COOP UNIT	160	5/2/2007	5,600		Yes	link	5,600	PO	Active	TEMP2111986444
30-015-35484	COG OPERATING LLC	EDDY	S:22, T:17S, R:29E	G J WEST COOP UNIT	151	3/21/2007	5,600		Yes	link	5,628	O	Active	TEMP1236730170
30-015-35491	CIMAREX ENERGY CO. OF COLORADO or COG OPERATING LLC	EDDY	S:26, T:17S, R:29E	KEELY "26" FEDERAL	2	3/20/2007	11,300		Yes	link	11,260	G	Active Permit	TEMP1899260797
30-015-35400	MARBOB ENERGY CORP	EDDY	S:23, T:17S, R:29E	BURCH KEELY UNIT	977	1/17/2007	4,800		Yes	link	4,800	PG	Active Permit	TEMP1252784504
30-015-35389	MARBOB ENERGY CORP	EDDY	S:23, T:17N, R:29E	BURCH KEELY UNIT	980	1/16/2007	4,800		Yes	link	4,800	PO	Active Permit	TEMP557971541
30-015-35159	COG OPERATING LLC	EDDY	S:27, T:17S, R:29E	RJ UNIT	150	9/21/2006	3,600		Yes	link	3,600	PO	Active Permit	TEMP1312665849
30-015-35139	MARBOB ENERGY CORP	EDDY	S:15, T:17S, R:29E	DODD FEDERAL UNIT	507	9/9/2006	5,000		Yes	link	5,005	O	Active Permit	TEMP2037358148
	CIMAREX													

30-015-35025	ENERGY CO OF COLORADO	EDDY	S:26, T:17S, R:29E	KEELY 26 FEDERAL	001	7/17/2006	11,600		No	link	11,225	G	Active Permit	TMP0000000079902
30-015-34988	COG OPERATING LLC	EDDY	S:27, T:17S, R:29E	RJ UNIT	149	6/23/2006	3,600		No	link	3,600	PO	Active Permit	TMP0000000010191
30-015-34975	COG OPERATING LLC	EDDY	S:27, T:17S, R:29E	RJ UNIT	136	6/22/2006	3,600		No	link	3,615	O	Active Permit	TMP0000000010208
30-015-34976	COG OPERATING LLC	EDDY	S:27, T:17S, R:29E	RJ UNIT	138	6/22/2006	3,600		No	link	3,610	O	Active Permit	TMP0000000010186
30-015-34978	COG OPERATING LLC	EDDY	S:27, T:17S, R:29E	RJ UNIT	141	6/22/2006	3,600		No	link	3,600	PO	Active Permit	TMP0000000010195
30-015-34979	COG OPERATING LLC	EDDY	S:27, T:17S, R:29E	RJ UNIT	142	6/22/2006	3,600		Yes	link	3,600	PO	Active Permit	TMP0000000010187
30-015-34624	MACK ENERGY CORPORATION or MACK ENERGY CORP	EDDY	S:27, T:17S, R:29E	RJ UNIT	132	2/15/2006	3,600		No	link	3,616	PO	Active	TMP0000000079651
30-015-34625	MACK ENERGY CORPORATION or MACK ENERGY CORP	EDDY	S:27, T:17S, R:29E	RJ UNIT	133	2/15/2006	3,600		No	link	3,610	PO	Active	TEMP1677672572
30-015-34580	MACK ENERGY CORPORATION or MACK ENERGY CORP	EDDY	S:27, T:17S, R:29E	RJ UNIT	135	1/31/2006	3,600		No	link	3,615	PO	Active Permit	TEMP1762943363
30-015-34573	MACK ENERGY CORPORATION or MACK ENERGY CORP	EDDY	S:27, T:17S, R:29E	RJ UNIT	134	1/27/2006	3,600		No	link	3,610	PO	Active Permit	TEMP1098237684
30-015-34499	MARBOB ENERGY CORP	EDDY	S:14, T:17S, R:29E	DODD FEDERAL UNIT	508	12/21/2005	5,000		No	link	4,520	PO	Active Permit	TEMP126662614
30-015-34655	MARBOB ENERGY CORP	EDDY	S:22, T:17S, R:29E	DODD FEDERAL UNIT	501	12/15/2005	5,000		No	link	4,560	O	Active Permit	TEMP1230713781
30-015-33794	MARBOB ENERGY CORP	EDDY	S:26, T:17S, R:29E	BURCH KEELY UNIT	905	9/13/2004	4,800		No	link	4,650	O	Active	TEMP538407246
30-015-33794	MARBOB ENERGY CORP	EDDY	S:26, T:17S, R:29E	BURCH KEELY UNIT	905	8/31/2004			No	link	4,650	O	Active	TEMP1728295757
30-015-32920	MARBOB ENERGY CORP	EDDY	S:23, T:17S, R:29E	BURCH KEELY UNIT	912	7/29/2003	4,800		No	link	4,650	O	Active	TEMP261199143
30-015-32920	MARBOB ENERGY CORP	EDDY	S:23, T:17S, R:29E	BURCH KEELY UNIT	356	6/30/2003			No	link	4,650	O	Active	TEMP152178286
30-015-03158	HANSON ENERGY	EDDY	S:27, T:17S, R:29E	ROBINSON STATE	003	5/1/2003	0		No	link	0	O	Pumping	TEMP1286556353
30-015-32708	MARBOB ENERGY CORP	EDDY	S:23, T:17S, R:29E	BURCH KEELY UNIT	901	3/26/2003	4,800		No	link	4,610	O	Active	TEMP768664912
30-015-32714	MARBOB ENERGY CORP	EDDY	S:26, T:17S, R:29E	BURCH KEELY UNIT	925	3/26/2003	4,800		No	link	4,690	O	Active	TEMP697871115
30-015-32711	MARBOB ENERGY CORP	EDDY	S:23, T:17S, R:29E	BURCH KEELY UNIT	911	3/26/2003	4,800		No	link	4,610	O	Active	TEMP494137535
30-015-32697	MARBOB ENERGY CORP	EDDY	S:23, T:17S, R:29E	BURCH KEELY UNIT	900	3/24/2003	4,800		No	link	4,600	O	Active	TEMP245021659
	MARBOB			BURCH										

30-015-32698	ENERGY CORP	EDDY	S:23, T:17S, R:29E	KEELY UNIT	902	3/24/2003	4,800		No	link	4,550	O	Active	TEMP576290462
30-015-32699	MARBOB ENERGY CORP	EDDY	S:26, T:17S, R:29E	BURCH KEELY UNIT	904	3/24/2003	4,800		No	link	4,665	O	Active	TEMP600529643
30-015-32755	MARBOB ENERGY CORP	EDDY	S:23, T:17S, R:29E	BURCH KEELY UNIT	910	3/24/2003	4,800		No	link	4,630	O	Active	TEMP1089564036
30-015-32697	MARBOB ENERGY CORP	EDDY	S:23, T:17S, R:29E	BURCH KEELY UNIT	331	2/28/2003			No	link	4,600	O	Active	TEMP980288138
30-015-32698	MARBOB ENERGY CORP	EDDY	S:23, T:17S, R:29E	BURCH KEELY UNIT	332	2/28/2003			No	link	4,550	O	Active	TEMP1942295156
30-015-32699	MARBOB ENERGY CORP	EDDY	S:26, T:17S, R:29E	BURCH KEELY UNIT	333	2/28/2003			No	link	4,665	O	Active	TEMP531655596
30-015-32708	MARBOB ENERGY CORP	EDDY	S:23, T:17S, R:29E	BURCH KEELY UNIT	336	2/28/2003			No	link	4,610	O	Active	TEMP89220215
30-015-32714	MARBOB ENERGY CORP	EDDY	S:26, T:17S, R:29E	BURCH KEELY UNIT	348	2/28/2003			No	link	4,690	O	Active	TEMP488002321
30-015-32755	MARBOB ENERGY CORP	EDDY	S:23, T:17S, R:29E	BURCH KEELY UNIT	337	2/28/2003			No	link	4,630	O	Active	TEMP2112990020
30-015-32711	MARBOB ENERGY CORP	EDDY	S:23, T:17S, R:29E	BURCH KEELY UNIT	343	2/28/2003			No	link	4,610	O	Active	TEMP304927478
30-015-32504	MARBOB ENERGY CORP	EDDY	S:22, T:17S, R:29E	M DODD A	049	10/29/2002	5,000		No	link	4,597	O	Active	TEMP281530263
30-015-32505	MARBOB ENERGY CORP	EDDY	S:22, T:17S, R:29E	M DODD A	051	10/29/2002	5,000		No	link	4,533	O	Active	TEMP511225357
30-015-32458	MARBOB ENERGY CORP	EDDY	S:22, T:17S, R:29E	MARY DODD A	050	9/30/2002	5,000		No	link	4,537	O	Active	TEMP1693414916
30-015-32443	MARBOB ENERGY CORP	EDDY	S:23, T:17S, R:29E	BURCH KEELY UNIT	892	9/11/2002	4,800		No	link	4,770	O	Active	TEMP820657445
30-015-32443	MARBOB ENERGY CORP	EDDY	S:23, T:17S, R:29E	BURCH KEELY UNIT	330	8/31/2002			No	link	4,770	O	Active	TEMP1010708198
30-015-06192	LOCO HILLS GSF, LTD	EDDY	S:22, T:17S, R:29E	LEONARD	001	7/15/2002			No	link	643	PM	Unknown	TEMP1105868671
30-015-06193	LOCO HILLS GSF, LTD	EDDY	S:22, T:17S, R:29E	LEONARD	002	7/15/2002			No	link		PM	Plugged	TEMP1130877349
30-015-32093	MARBOB ENERGY CORP	EDDY	S:23, T:17S, R:29E	BURCH KEELY UNIT	320	11/6/2001			No	link	4,540	O	Pumping	TEMP206629976
30-015-32092	MARBOB ENERGY CORP	EDDY	S:23, T:17S, R:29E	BURCH KEELY UNIT	319	11/5/2001			No	link	4,580	O	Pumping	TEMP180082302
30-015-21041	H.L. BROWN OPERATING L.L.C. or H L BROWN OPERATING, LLC	EDDY	S:15, T:17S, R:29E	DODD FEDERAL	001	6/1/2001	0		No	link	0	G	Flowing	TEMP1090401488
30-015-30672	EOG RESOURCES INC	EDDY	S:26, T:17S, R:29E	GRAYBURG DEEP UNIT	016	12/7/2000			No	link		PG	Unknown	TEMP1988638334
30-015-31321	MARBOB ENERGY CORP	EDDY	S:26, T:17S, R:29E	BURCH KEELY UNIT	306	8/29/2000			No	link	4,778	O	Pumping	TEMP936805123
30-015-31246	MARBOB ENERGY CORP	EDDY	S:26, T:17S, R:29E	BURCH KEELY UNIT	307	7/10/2000			No	link	4,805	O	Pumping	TEMP1123555885
30-015-31247	MARBOB ENERGY CORP	EDDY	S:26, T:17S, R:29E	BURCH KEELY UNIT	310	7/10/2000			No	link	4,869	O	Pumping	TEMP1009285462
30-015-31127	VINTAGE DRILLING LLC	EDDY	S:27, T:17S, R:29E	ROBINSON JACKSON UNIT	038	5/3/2000			No	link	3,223	O	Pumping	TEMP740121814
	VINTAGE			ROBINSON JACKSON										

30-015-31128	DRILLING LLC	EDDY	S:27, T:17S, R:29E	UNIT	035	5/3/2000		No	link	3,680	O	Pumping	TEMP766669488
30-015-30632	MARBOB ENERGY CORP	EDDY	S:23, T:17S, R:29E	BURCH KEELY UNIT	302	4/4/2000		No	link	4,570	O	Pumping	TEMP652278116
30-015-31037	MARBOB ENERGY CORP	EDDY	S:27, T:17S, R:29E	BR-549 STATE	003	3/21/2000		No	link	4,580	O	Pumping	TEMP1651809786
30-015-31008	MARBOB ENERGY CORP	EDDY	S:27, T:17S, R:29E	BR-549 STATE	001	3/13/2000		No	link	4,559	O	Pumping	TEMP1446323225
30-015-30994	VINTAGE DRILLING LLC	EDDY	S:27, T:17S, R:29E	ROBINSON JACKSON UNIT	036	2/28/2000		No	link	3,609	PO	Pumping	TEMP958846369
30-015-31210	VINTAGE DRILLING LLC	EDDY	S:27, T:17S, R:29E	ROBINSON JACKSON UNIT	037	2/15/2000		No	link	3,620	O	Pumping	TEMP1613163041
30-015-30790	MARBOB ENERGY CORP	EDDY	S:22, T:17S, R:29E	M DODD A	048	10/15/1999		No	link	4,545	O	Pumping	TEMP39253575
30-015-30791	MARBOB ENERGY CORP	EDDY	S:26, T:17S, R:29E	BURCH KEELY UNIT	300	9/14/1999		No	link	4,750	O	Pumping	TEMP138903540
30-015-30755	MARBOB ENERGY CORP	EDDY	S:27, T:17S, R:29E	B 440 FEDERAL	005	9/1/1999		No	link	4,819	O	Pumping	TEMP2017247670
30-015-30739	MARBOB ENERGY CORP	EDDY	S:27, T:17S, R:29E	B 440 FEDERAL	006	8/24/1999		No	link	4,900	O	Pumping	TEMP730094034
30-015-30154	MACK ENERGY CORP	EDDY	S:22, T:17S, R:29E	PINON FEDERAL	003	3/17/1999		No	link		PO	Unknown	TEMP160737588
30-015-29810	MARBOB ENERGY CORP	EDDY	S:23, T:17S, R:29E	BURCH KEELY UNIT	853	3/4/1999		No	link	4,570	PO	Unknown	TEMP2075494184
30-015-30040	MACK ENERGY CORP	EDDY	S:22, T:17S, R:29E	PINON FEDERAL	004	3/4/1999		No	link		PO	Unknown	TEMP1506573916
30-015-29492	MARBOB ENERGY CORP	EDDY	S:23, T:17S, R:29E	BURCH KEELY UNIT	299	12/14/1998		No	link	4,580	O	Pumping	TEMP1445835019
30-015-30477	MARBOB ENERGY CORP	EDDY	S:27, T:17S, R:29E	B 440 FEDERAL	004	11/2/1998		No	link	4,812	O	Pumping	TEMP16257536
30-015-30453	MARBOB ENERGY CORP	EDDY	S:26, T:17S, R:29E	BURCH KEELY UNIT	290	10/22/1998		No	link	4,723	O	Pumping	TEMP889237466
30-015-30429	MARBOB ENERGY CORP	EDDY	S:27, T:17S, R:29E	B 440 FEDERAL	003	10/7/1998		No	link	4,806	O	Pumping	TEMP1748600993
30-015-30394	MARBOB ENERGY CORP	EDDY	S:26, T:17S, R:29E	BURCH KEELY UNIT	288	9/2/1998		No	link	4,700	O	Pumping	TEMP557634581
30-015-30391	MARBOB ENERGY CORP	EDDY	S:27, T:17S, R:29E	BARNSDALL FEDERAL	009	9/1/1998		No	link	4,694	O	Pumping	TEMP2026605882
30-015-30392	MARBOB ENERGY CORP	EDDY	S:27, T:17S, R:29E	BARNSDALL FEDERAL	011	9/1/1998		No	link	4,705	O	Pumping	TEMP1903101485
30-015-30393	MARBOB ENERGY CORP	EDDY	S:27, T:17S, R:29E	B 440 FEDERAL	001	9/1/1998		No	link	4,750	O	Pumping	TEMP694989939
30-015-30385	MARBOB ENERGY CORP	EDDY	S:27, T:17S, R:29E	BARNSDALL FEDERAL	014	8/14/1998		No	link		PO	Unknown	TEMP1661863925
30-015-29456	EOG RESOURCES INC	EDDY	S:26, T:17S, R:29E	GRAYBURG DEEP UNIT	016	7/30/1998		No	link		PG	Unknown	TEMP1512766004
30-015-30209	MARBOB ENERGY CORP	EDDY	S:27, T:17S, R:29E	BARNSDALL FEDERAL	013	4/7/1998		No	link	4,785	O	Pumping	TEMP2056795491
30-015-30210	MARBOB ENERGY CORP	EDDY	S:27, T:17S, R:29E	B 440 FEDERAL	002	4/7/1998		No	link	4,750	O	Pumping	TEMP1765155825
30-015-30153	MACK ENERGY CORP	EDDY	S:22, T:17S, R:29E	PINON FEDERAL	002	3/11/1998		No	link	4,565	O	Pumping	TEMP36078944
30-015-30142	MARBOB ENERGY CORP	EDDY	S:27, T:17S, R:29E	BARNSDALL FEDERAL	004	3/9/1998		No	link	4,690	O	Pumping	TEMP729956116
	MARBOB			BURCH									

30-015-30116	MARBOB ENERGY CORP	EDDY	S:23, T:17S, R:29E	KEELY UNIT	287	3/4/1998			No	link	4,775	O	Pumping	TEMP142075121
30-015-29963	MARBOB ENERGY CORP	EDDY	S:26, T:17S, R:29E	BURCH KEELY UNIT	283	12/10/1997			No	link	4,775	O	Pumping	TEMP1727425242
30-015-29973	MARBOB ENERGY CORP	EDDY	S:27, T:17S, R:29E	BARNSDALL FEDERAL	010	12/10/1997			No	link	4,566	O	Pumping	TEMP1837288642
30-015-29974	MARBOB ENERGY CORP	EDDY	S:27, T:17S, R:29E	BARNSDALL FEDERAL	012	12/10/1997			No	link	4,700	O	Pumping	TEMP1809201972
30-015-29955	MARBOB ENERGY CORP	EDDY	S:26, T:17S, R:29E	BURCH KEELY UNIT	292	11/19/1997			No	link	4,700	O	Pumping	TEMP748624040
30-015-29812	MARBOB ENERGY CORP	EDDY	S:26, T:17S, R:29E	BURCH KEELY UNIT	293	8/20/1997			No	link	4,715	O	Pumping	TEMP1987469526
30-015-29813	MARBOB ENERGY CORP	EDDY	S:26, T:17S, R:29E	BURCH KEELY UNIT	298	8/20/1997			No	link	4,727	O	Pumping	TEMP1995549253
30-015-29757	MACK ENERGY CORP	EDDY	S:22, T:17S, R:29E	PINON FEDERAL	001	7/25/1997			No	link	6,438	O	Pumping	TEMP353425623
30-015-29478	MARBOB ENERGY CORP	EDDY	S:26, T:17S, R:29E	BURCH KEELY UNIT	268	4/3/1997			No	link	4,745	O	Pumping	TEMP912188295
30-015-27783	MARBOB ENERGY CORP	EDDY	S:23, T:17S, R:29E	BURCH KEELY UNIT	272	3/17/1997			No	link	4,718	O	Pumping	TEMP1243273208
30-015-29454	EOG RESOURCES INC	EDDY	S:23, T:17S, R:29E	GRAYBURG DEEP UNIT	013	3/13/1997			No	link	11,365	G	Active	TEMP1378103889
30-015-29339	MARBOB ENERGY CORP	EDDY	S:27, T:17S, R:29E	BARNSDALL FEDERAL	005	1/16/1997			No	link	4,695	O	Pumping	TEMP1190341851
30-015-29340	MARBOB ENERGY CORP	EDDY	S:27, T:17S, R:29E	BARNSDALL FEDERAL	006	1/16/1997			No	link	4,700	O	Pumping	TEMP1292674309
30-015-29341	MARBOB ENERGY CORP	EDDY	S:27, T:17S, R:29E	BARNSDALL FEDERAL	007	1/16/1997			No	link	6,600	O	Pumping	TEMP1319221983
30-015-29342	MARBOB ENERGY CORP	EDDY	S:27, T:17S, R:29E	BARNSDALL FEDERAL	008	1/16/1997			No	link	4,825	O	Pumping	TEMP1049897753
30-015-29311	MARBOB ENERGY CORP	EDDY	S:26, T:17S, R:29E	BURCH KEELY UNIT	273	12/18/1996			No	link	4,813	O	Pumping	TEMP2090427345
30-015-29147	MARBOB ENERGY CORP	EDDY	S:27, T:17S, R:29E	BARNSDALL FEDERAL	002	9/4/1996			No	link	4,640	O	Pumping	TEMP1293377935
30-015-29148	MARBOB ENERGY CORP	EDDY	S:27, T:17S, R:29E	BARNSDALL FEDERAL	003	9/4/1996			No	link	4,600	O	Pumping	TEMP1176029520
30-015-29146	MARBOB ENERGY CORP	EDDY	S:27, T:17S, R:29E	BARNSDALL FEDERAL	001	9/3/1996			No	link	5,766	O	Pumping	TEMP1325696843
30-015-28732	MARBOB ENERGY CORP	EDDY	S:26, T:17S, R:29E	BURCH KEELY UNIT	237	4/25/1996	11,250		No	link	12,250	G	Plugged and Abandoned	TEMP1337113427
30-015-28911	MARBOB ENERGY CORP	EDDY	S:26, T:17S, R:29E	BURCH KEELY UNIT	240	3/26/1996			No	link	4,750	O	Pumping	TEMP480464806
30-015-28914	MARBOB ENERGY CORP	EDDY	S:23, T:17S, R:29E	BURCH KEELY UNIT	258	3/26/1996			No	link	4,555	O	Pumping	TEMP701310674
30-015-28591	MACK ENERGY CORP	EDDY	S:22, T:17S, R:29E	G J WEST COOP UNIT	135	7/21/1995			No	link	5,505	O	Pumping	TEMP147586606
30-015-28464	MARBOB ENERGY CORP	EDDY	S:26, T:17S, R:29E	BURCH KEELY UNIT	252	7/5/1995			No	link	4,615	O	Pumping	TEMP2054555396
30-015-28586	MARBOB ENERGY CORP	EDDY	S:26, T:17S, R:29E	BURCH KEELY UNIT	253	6/12/1995			No	link	4,752	O	Pumping	TEMP1343315382
30-015-28582	MARBOB ENERGY CORP	EDDY	S:23, T:17S, R:29E	BURCH KEELY UNIT	248	6/10/1995			No	link	4,622	O	Pumping	TEMP871613231
30-015-28360	MARBOB ENERGY CORP	EDDY	S:26, T:17S, R:29E	BURCH KEELY UNIT	251	5/23/1995			No	link	4,675	O	Pumping	TEMP2024144909
30-015-27575	MARBOB ENERGY CORP	EDDY	S:23, T:17S, R:29E	BURCH KEELY UNIT	249	5/1/1995			No	link	4,553	O	Pumping	TEMP743271493

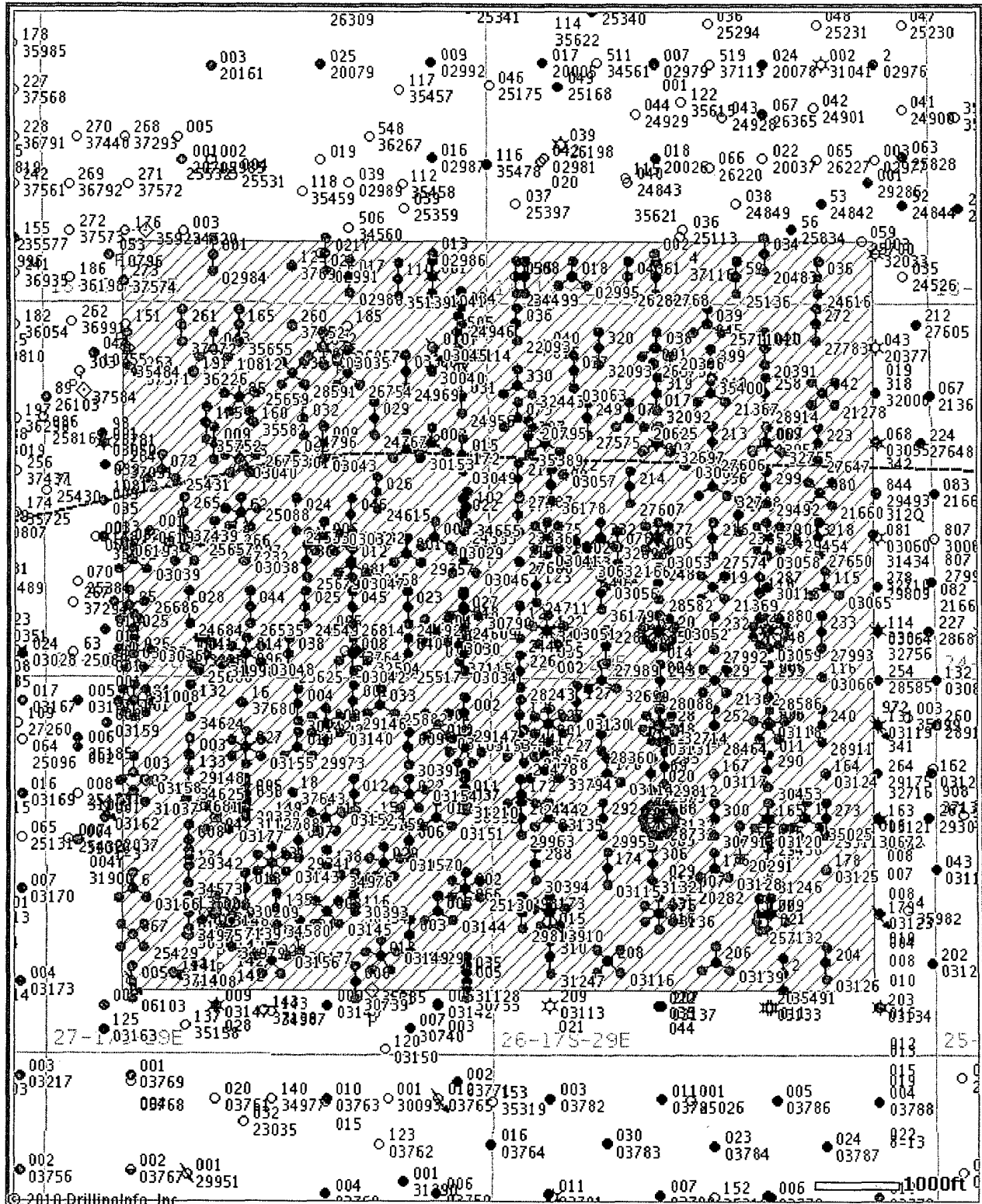
30-015-28243	MARBOB ENERGY CORP	EDDY	S:23, T:17S, R:29E	BURCH KEELY UNIT	226	12/6/1994			No	link	4,625	O	Pumping	TEMP298630173
30-015-03140	VINTAGE DRILLING LLC	EDDY	S:27, T:17S, R:29E	ROBINSON JACKSON UNIT	002	12/1/1994	0		No	link	0	O	Pumping	TEMP1544571873
30-015-03143	VINTAGE DRILLING LLC	EDDY	S:27, T:17S, R:29E	ROBINSON JACKSON UNIT	031	12/1/1994	0		No	link	0	O	Pumping	TEMP1393365556
30-015-03144	VINTAGE DRILLING LLC	EDDY	S:27, T:17S, R:29E	ROBINSON JACKSON UNIT	007	12/1/1994	0		No	link	0	O	Flowing	TEMP1765417742
30-015-03145	VINTAGE DRILLING LLC	EDDY	S:27, T:17S, R:29E	ROBINSON JACKSON UNIT	008	12/1/1994			No	link		O	Pumping	TEMP1652686314
30-015-03151	VINTAGE DRILLING LLC	EDDY	S:27, T:17S, R:29E	ROBINSON JACKSON UNIT	012	12/1/1994			No	link		O	Pumping	TEMP1881262982
30-015-03152	VINTAGE DRILLING LLC	EDDY	S:27, T:17S, R:29E	ROBINSON JACKSON UNIT	015	12/1/1994	0		No	link	0	O	Flowing	TEMP1513827782
30-015-03153	VINTAGE DRILLING LLC	EDDY	S:27, T:17S, R:29E	ROBINSON JACKSON UNIT	021	12/1/1994	0		No	link	0	O	Pumping	TEMP1638486426
30-015-03154	VINTAGE DRILLING LLC	EDDY	S:27, T:17S, R:29E	ROBINSON JACKSON UNIT	022	12/1/1994	0		No	link	3,240	O	Pumping	TEMP1657339122
30-015-03155	VINTAGE DRILLING LLC	EDDY	S:27, T:17S, R:29E	ROBINSON JACKSON UNIT	027	12/1/1994	0		No	link	0	O	Pumping	TEMP1388399640
30-015-03156	VINTAGE DRILLING LLC	EDDY	S:27, T:17S, R:29E	ROBINSON JACKSON UNIT	028	12/1/1994	0		No	link	0	O	Pumping	TEMP1414562566
30-015-03157	VINTAGE DRILLING LLC	EDDY	S:27, T:17S, R:29E	ROBINSON JACKSON UNIT	029	12/1/1994	0		No	link	0	O	Pumping	TEMP1578029703
30-015-03164	VINTAGE DRILLING LLC	EDDY	S:27, T:17S, R:29E	ROBINSON JACKSON UNIT	001	12/1/1994	0		No	link	0	O	Pumping	TEMP1750012462
30-015-03177	VINTAGE DRILLING LLC	EDDY	S:27, T:17S, R:29E	ROBINSON JACKSON UNIT	014	12/1/1994	0		No	link	0	O	Pumping	TEMP844698300
30-015-25882	VINTAGE DRILLING LLC	EDDY	S:27, T:17S, R:29E	ROBINSON JACKSON UNIT	033	12/1/1994			No	link	3,500	O	Pumping	TEMP281204509
30-015-27989	MARBOB ENERGY CORP	EDDY	S:23, T:17S, R:29E	BURCH KEELY UNIT	228	8/29/1994			No	link	4,765	O	Pumping	TEMP2129627404
30-015-28088	MARBOB ENERGY CORP	EDDY	S:26, T:17S, R:29E	BURCH KEELY UNIT	243	8/25/1994			No	link	4,602	O	Pumping	TEMP1183945256
30-015-20408	MARBOB ENERGY CORP	EDDY	S:22, T:17S, R:29E	M DODD A	047	7/11/1994	0		No	link	0	D	Salt Water Disposal	TEMP1164533788
30-015-27647	MARBOB ENERGY CORP	EDDY	S:23, T:17S, R:29E	BURCH KEELY UNIT	223	6/9/1994			No	link	4,600	O	Pumping	TEMP455661561
30-015-27992	MARBOB ENERGY CORP	EDDY	S:23, T:17S, R:29E	BURCH KEELY UNIT	232	5/31/1994			No	link	4,650	O	Pumping	TEMP1975727844
30-015-27993	MARBOB ENERGY CORP	EDDY	S:23, T:17S, R:29E	BURCH KEELY UNIT	233	5/31/1994			No	link	4,600	O	Pumping	TEMP1677932196
30-015-27574	MARBOB ENERGY CORP	EDDY	S:23, T:17S, R:29E	BURCH KEELY UNIT	216	4/12/1994			No	link	4,600	O	Pumping	TEMP1110706692

30-015-27606	MARBOB ENERGY CORP	EDDY	S:23, T:17S, R:29E	BURCH KEELY UNIT	213	4/12/1994			No	link	4,600	O	Pumping	TEMP1496625163
30-015-27607	MARBOB ENERGY CORP	EDDY	S:23, T:17S, R:29E	BURCH KEELY UNIT	214	4/12/1994			No	link	4,600	O	Pumping	TEMP1621283807
30-015-27487	MARBOB ENERGY CORP	EDDY	S:23, T:17S, R:29E	BURCH KEELY UNIT	211	4/11/1994			No	link	4,600	O	Pumping	TEMP1380030922
30-015-27680	MARBOB ENERGY CORP	EDDY	S:23, T:17S, R:29E	BURCH KEELY UNIT	217	10/22/1993			No	link	4,600	O	Pumping	TEMP1658017198
30-015-27650	MARBOB ENERGY CORP	EDDY	S:23, T:17S, R:29E	BURCH KEELY UNIT	218	9/22/1993			No	link	4,600	O	Pumping	TEMP1505641309
30-015-26880	MARBOB ENERGY CORP	EDDY	S:23, T:17S, R:29E	BURCH KEELY UNIT	118	3/1/1992			No	link	3,575	PO	Pumping	TEMP1736804593
30-015-26814	MARBOB ENERGY CORP	EDDY	S:22, T:17S, R:29E	M DODD A	045	12/1/1991			No	link	4,520	PO	Pumping	TEMP971242056
30-015-26782	MARBOB ENERGY CORP	EDDY	S:22, T:17S, R:29E	M DODD A	046	8/1/1991			No	link	0	PO	Pumping	TEMP181337240
30-015-26753	MACK ENERGY CORP	EDDY	S:22, T:17S, R:29E	G J WEST COOP UNIT	096	7/1/1991			No	link	4,496	PO	Pumping	TEMP649561327
30-015-26754	MACK ENERGY CORP	EDDY	S:22, T:17S, R:29E	G J WEST COOP UNIT	097	7/1/1991			No	link	5,530	O	Pumping	TEMP675724252
30-015-26686	MACK ENERGY CORP	EDDY	S:22, T:17S, R:29E	G J WEST COOP UNIT	095	6/1/1991			No	link	4,518	PO	Pumping	TEMP1210714929
30-015-31998	MACK ENERGY CORP	EDDY	S:22, T:17S, R:29E	M DODD A	001	5/6/1991			No	link		PW	Active	TEMP980735778
30-015-26535	MARBOB ENERGY CORP	EDDY	S:22, T:17S, R:29E	M DODD A	044	1/1/1991			No	link	4,461	PO	Pumping	TEMP102017670
30-015-26282	MARBOB ENERGY CORP	EDDY	S:14, T:17S, R:29E	M DODD A	043	6/1/1990			No	link	4,555	PO	Pumping	TEMP342965476
30-015-25659	MACK ENERGY CORP	EDDY	S:22, T:17S, R:29E	G J WEST COOP UNIT	085	9/1/1987			No	link	4,580	PO	Pumping	TEMP1676826687
30-015-25679	MARBOB ENERGY CORP	EDDY	S:22, T:17S, R:29E	M DODD A	042	9/1/1987			No	link	4,570	O	Pumping	TEMP1660297808
30-015-25713	MARBOB ENERGY CORP	EDDY	S:26, T:17S, R:29E	BURCH KEELY UNIT	177	7/1/1987			No	link	4,676	PO	Pumping	TEMP1421171457
30-015-25657	MACK ENERGY CORP	EDDY	S:22, T:17S, R:29E	G J WEST COOP UNIT	084	1/1/1987			No	link	4,510	PO	Pumping	TEMP1918064247
30-015-25686	MARBOB ENERGY CORP	EDDY	S:22, T:17S, R:29E	M DODD A	041	1/1/1987			No	link	4,600	PO	Pumping	TEMP1327490010
30-015-25711	MARBOB ENERGY CORP	EDDY	S:23, T:17S, R:29E	BURCH KEELY UNIT	039	12/31/1986			No	link	4,600	O	Pumping	TEMP1171854169
30-015-25625	MARBOB ENERGY CORP	EDDY	S:22, T:17S, R:29E	M DODD A	038	12/1/1986			No	link	4,510	PO	Pumping	TEMP471023634
30-015-25517	MARBOB ENERGY CORP	EDDY	S:22, T:17S, R:29E	M DODD A	040	5/1/1986			No	link	4,400	PO	Pumping	TEMP377763088
30-015-25429	MACK ENERGY CORP	EDDY	S:27, T:17S, R:29E	G J WEST COOP UNIT	067	1/1/1986			No	link	5,064	PO	Pumping	TEMP1333215271
30-015-25431	MACK ENERGY CORP	EDDY	S:22, T:17S, R:29E	G J WEST COOP UNIT	072	1/1/1986			No	link	5,029	PO	Pumping	TEMP1482882593
30-015-25130	MACK ENERGY CORP	EDDY	S:27, T:17S, R:29E	G J WEST COOP UNIT	066	3/1/1985			No	link	4,750	PO	Pumping	TEMP1374924683
30-015-25136	MARBOB ENERGY CORP	EDDY	S:14, T:17S, R:29E	M DODD B	045	1/1/1985			No	link	3,600	O	Pumping	TEMP1284893440
30-015-24946	MARBOB ENERGY CORP	EDDY	S:22, T:17S, R:29E	M DODD A	034	12/1/1984			No	link	3,518	PO	Pumping	TEMP200640391
30-015-24956	MARBOB ENERGY CORP	EDDY	S:22, T:17S, R:29E	M DODD A	031	12/1/1984			No	link	3,450	PO	Pumping	TEMP1417985911

30-015-25088	MACK ENERGY CORP	EDDY	S:22, T:17S, R:29E	G J WEST COOP UNIT	062	12/1/1984			No	link	3,508	PO	Pumping	TEMP1007858908
30-015-24947	MARBOB ENERGY CORP	EDDY	S:14, T:17S, R:29E	M DODD A	035	10/1/1984			No	link	3,450	PO	Pumping	TEMP325299035
30-015-24969	MARBOB ENERGY CORP	EDDY	S:22, T:17S, R:29E	M DODD A	033	10/1/1984			No	link	3,400	PO	Pumping	TEMP1965126491
30-015-24796	MARBOB ENERGY CORP	EDDY	S:22, T:17S, R:29E	M DODD A	032	7/1/1984			No	link	3,450	PO	Pumping	TEMP1082359273
30-015-24415	MARBOB ENERGY CORP	EDDY	S:23, T:17S, R:29E	BURCH KEELY UNIT	124	5/1/1984			No	link	3,500	PO	Pumping	TEMP72980377
30-015-24442	MARBOB ENERGY CORP	EDDY	S:26, T:17S, R:29E	BURCH KEELY UNIT	172	5/1/1984			No	link	3,500	O	Active	TEMP1920544596
30-015-24417	MARBOB ENERGY CORP	EDDY	S:26, T:17S, R:29E	BURCH KEELY UNIT	126	4/1/1984			No	link	3,500	PO	Pumping	TEMP169796179
30-015-24711	MARBOB ENERGY CORP	EDDY	S:23, T:17S, R:29E	BURCH KEELY UNIT	123	4/1/1984			No	link	3,500	PO	Pumping	TEMP1608174461
30-015-24768	MARBOB ENERGY CORP	EDDY	S:14, T:17S, R:29E	M DODD A	030	4/1/1984			No	link	3,450	O	Pumping	TEMP630679388
30-015-24616	MARBOB ENERGY CORP	EDDY	S:14, T:17S, R:29E	M DODD B	036	3/1/1984			No	link	3,445	PO	Pumping	TEMP90507257
30-015-24684	MARBOB ENERGY CORP	EDDY	S:22, T:17S, R:29E	M DODD A	028	3/1/1984			No	link	3,411	PO	Pumping	TEMP1438500196
30-015-24767	MARBOB ENERGY CORP	EDDY	S:22, T:17S, R:29E	M DODD A	029	3/1/1984			No	link	3,500	PO	Pumping	TEMP361355158
30-015-24609	MARBOB ENERGY CORP	EDDY	S:22, T:17S, R:29E	M DODD A	027	1/1/1984			No	link	3,450	PO	Pumping	TEMP169198251
30-015-24615	MARBOB ENERGY CORP	EDDY	S:22, T:17S, R:29E	M DODD A	026	1/1/1984			No	link	3,467	PO	Pumping	TEMP215550649
30-015-24549	MARBOB ENERGY CORP	EDDY	S:22, T:17S, R:29E	M DODD A	025	10/1/1983			No	link	3,405	PO	Pumping	TEMP2054852610
30-015-24533	MARBOB ENERGY CORP	EDDY	S:22, T:17S, R:29E	M DODD A	024	8/1/1983			No	link	3,375	PO	Pumping	TEMP883890137
30-015-24492	MARBOB ENERGY CORP	EDDY	S:22, T:17S, R:29E	M DODD A	023	7/1/1983			No	link	0	PO	Pumping	TEMP2113162873
30-015-24353	MARBOB ENERGY CORP	EDDY	S:22, T:17S, R:29E	M DODD A	022	2/1/1983			No	link	4,000	PO	Pumping	TEMP1314718320
30-015-02991	MARBOB ENERGY CORP	EDDY	S:15, T:17S, R:29E	M DODD A	021Y	12/10/1982	3,439		No	link	11,180	O	Pumping	TEMP787801435
30-015-06103	MACK ENERGY CORP	EDDY	S:27, T:17S, R:29E	G J WEST COOP UNIT	005	3/5/1982			No	link		I	Temporarily Abandoned	TEMP1708568494
30-015-23852	MARBOB ENERGY CORP	EDDY	S:23, T:17S, R:29E	BURCH KEELY UNIT	078	12/1/1981			No	link	3,300	PO	Pumping	TEMP672664351
30-015-23836	MARBOB ENERGY CORP	EDDY	S:23, T:17S, R:29E	BURCH KEELY UNIT	074	11/1/1981			No	link	3,240	PO	Pumping	TEMP91831714
30-015-23166	MARBOB ENERGY CORP	EDDY	S:23, T:17S, R:29E	BURCH KEELY UNIT	076	5/1/1980	0		No	link	3,610	O	Pumping	TEMP1110219084
30-015-22573	MARBOB ENERGY CORP	EDDY	S:26, T:17S, R:29E	BURCH KEELY UNIT	169	6/7/1978			No	link	3,460	O	Pumping	TEMP1455610034
30-015-22093	MARBOB ENERGY CORP	EDDY	S:23, T:17S, R:29E	BURCH KEELY UNIT	036	9/1/1977	0		No	link	3,525	O	Pumping	TEMP754094844
30-015-03046	MARBOB ENERGY CORP	EDDY	S:22, T:17S, R:29E	M DODD A	011	3/1/1977	0		No	link	3,890	PO	Pumping	TEMP60610690
30-015-21660	MARBOB ENERGY CORP	EDDY	S:23, T:17S, R:29E	BURCH KEELY UNIT	080	12/1/1975	0		No	link	3,575	O	Pumping	TEMP542974967
30-015-21369	MARBOB ENERGY CORP	EDDY	S:23, T:17S, R:29E	BURCH KEELY UNIT	119	2/1/1975	0		No	link	0	O	Pumping	TEMP1639114717

30-015-21367	MARBOB ENERGY CORP	EDDY	S:23, T:17S, R:29E	BURCH KEELY UNIT	040	11/1/1974	0	No	link	0	O	Pumping	TEMP1507530593
30-015-21302	MARBOB ENERGY CORP	EDDY	S:26, T:17S, R:29E	BURCH KEELY UNIT	129	9/1/1974	0	No	link	0	O	Active	TEMP145366006
30-015-21278	MARBOB ENERGY CORP	EDDY	S:23, T:17S, R:29E	BURCH KEELY UNIT	042	8/1/1974	0	No	link	3,403	O	Pumping	TEMP1157378445
30-015-01172	MARBOB ENERGY CORP	EDDY	S:22, T:17S, R:29E	M DODD A	003	1/1/1970		No	link	0	PO	Pumping	TEMP1180659066
30-015-20386	MARBOB ENERGY CORP	EDDY	S:23, T:17S, R:29E	BURCH KEELY UNIT	038	1/1/1970		No	link	0	I	Plugged and Abandoned	TEMP633580306
30-015-03148	STEVENS OPERATING CORPORATION or PRE-ONGARD WELL OPERATOR	EDDY	S:27, T:17S, R:29E	PRE-ONGARD WELL	008	1/1/1970		No	link		PO	Active Permit	TEMP233012053
30-015-26375	STEVENS OPERATING CORPORATION or HANAGAN PETROLEUM CORP	EDDY	S:23, T:17S, R:29E	PRE-ONGARD WELL	001	1/1/1970		No	link		PO	Active Permit	TEMP1153903350

Offset wells to Burch Keely #725



© 2010 Drilling Info, Inc. All rights reserved. All data and information is provided "As Is" and subject to the DI subscription agreement.

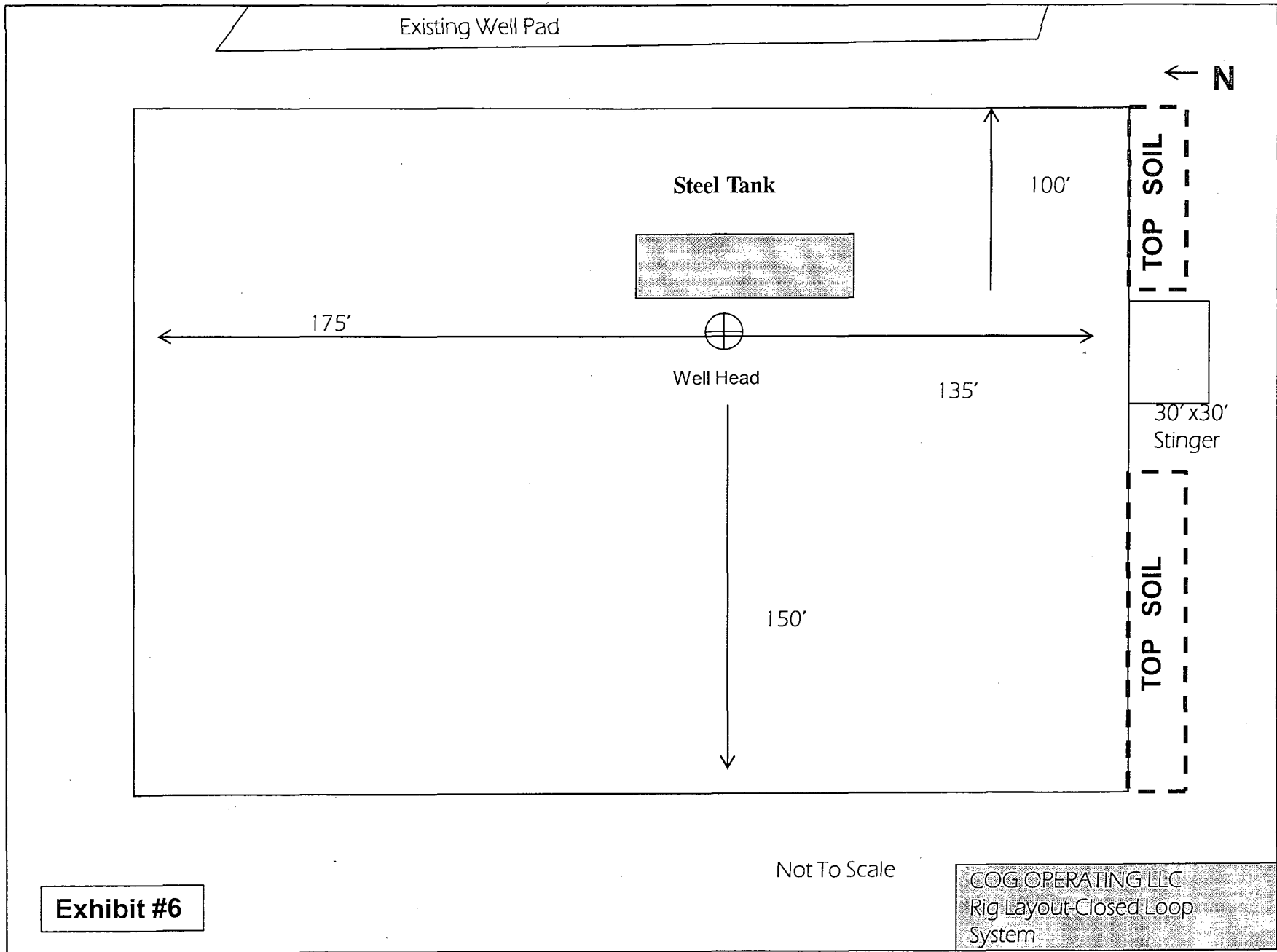


Exhibit #6

Not To Scale

COG OPERATING LLC
Rig Layout-Closed Loop
System

