

DISTRICT I
1625 N. FRENCH DR., HOBBS, NM 88240
DISTRICT II
1301 W. GRAND AVENUE, ARTESIA, NM 88210
DISTRICT III
1000 RIO BRAZOS RD., AZTEC, NM 87410
DISTRICT IV
11885 S. ST. FRANCIS DR., SANTA FE, NM 87505

State of New Mexico
Energy, Minerals & Natural Resources Department
OIL CONSERVATION DIVISION
1220 South St. Francis Dr.
Santa Fe, New Mexico 87505

Form C-102
Revised July 16, 2010
Submit to Appropriate
District Office

☐ AMENDED REPORT

WELL LOCATION AND ACREAGE DEDICATION PLAT

API Number 30-015-39005	Pool Code 22040	Pool Name Empire ; ABO
Property Code 309164	Property Name EMPIRE ABO UNIT	Well Number 406
OGRID No. 873	Operator Name APACHE CORPORATION	Elevation 3679'

Surface Location

UL or lot No. I	Section 32	Township 17-S	Range 28-E	Lot Idn	Feet from the 2205	North/South line SOUTH	Feet from the 1285	East/West line EAST	County EDDY
---------------------------	----------------------	-------------------------	----------------------	---------	------------------------------	----------------------------------	------------------------------	-------------------------------	-----------------------

Bottom Hole Location If Different From Surface

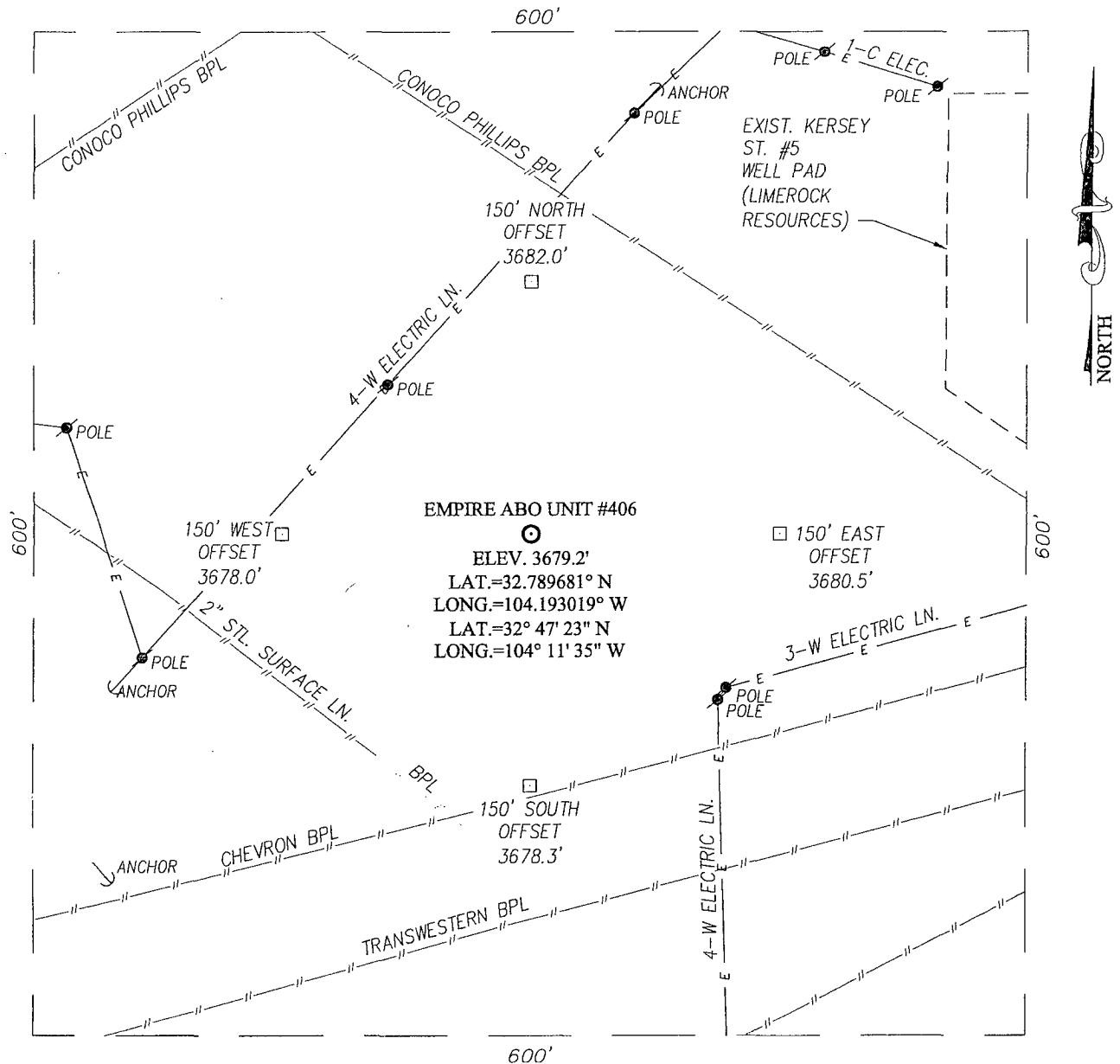
UL or lot No.	Section	Township	Range	Lot Idn	Feet from the	North/South line	Feet from the	East/West line	County
Dedicated Acres 40	Joint or Infill	Consolidation Code	Order No.						

NO ALLOWABLE WILL BE ASSIGNED TO THIS COMPLETION UNTIL ALL INTERESTS HAVE BEEN CONSOLIDATED OR A NON-STANDARD UNIT HAS BEEN APPROVED BY THE DIVISION

<p>GEODETIC COORDINATES NAD 27 NME</p> <p>SURFACE LOCATION Y=651025.5 N X=543119.7 E</p> <p>LAT.=32.789681° N LONG.=104.193019° W</p> <p>LAT.=32° 47' 23" N LONG.=104° 11' 35" W</p>	<p>RECEIVED MAY 06 2011 NMOCD ARTESIA</p>	<p>OPERATOR CERTIFICATION</p> <p>I hereby certify that the information herein is true and complete to the best of my knowledge and belief, and that this organization either owns a working interest or unleased mineral interest in the land including the proposed bottom hole location or has a right to drill this well at this location pursuant to a contract with an owner of such mineral or working interest, or to a voluntary pooling agreement or a compulsory pooling order heretofore entered by the division.</p> <p><i>Sorina L. Flores</i> 5/4/11 Signature Date</p> <p>Sorina L. Flores Printed Name</p> <p>Sorina.L.Flores@apachecorp.com E-mail Address</p>
		<p>SURVEYOR CERTIFICATION</p> <p>I hereby certify that the well location shown on this plat was plotted from field notes of actual surveys made by me or under my supervision, and that the same is true and correct to the best of my belief.</p> <p>APRIL 20, 2011</p> <p>Date of Survey</p> <p>Signature & Seal of Professional Surveyor:</p> <p><i>Ronald J. Eidson</i></p> <p>RONALD J. EIDSON NEW MEXICO 3239</p> <p>Certificate Number Gary G. Eidson 12641 Ronald J. Eidson 3239</p> <p>DSS JWSC W.O.: 11.11.0827</p>

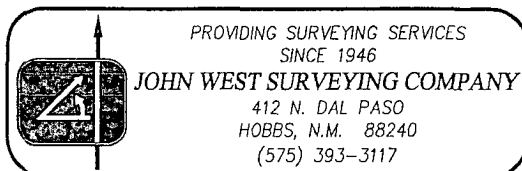
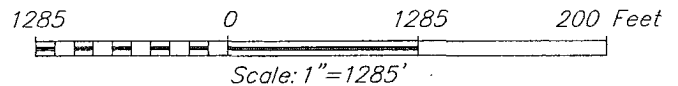
SECTION 32, TOWNSHIP 17 SOUTH, RANGE 28 EAST, N.M.P.M.

EDDY COUNTY NEW MEXICO



DIRECTIONS TO LOCATION

FROM THE INTERSECTION OF U.S. HWY. #82 AND CO. RD. #206 (ILLINOIS CAMP RD.), GO SOUTH CO. RD. #206 APPROX. 0.3 MILES. TURN LEFT AND GO EAST APPROX. 0.3 MILE. THIS LOCATION STAKE IS APPROX. 630 FEET SOUTH OF LEASE ROAD.

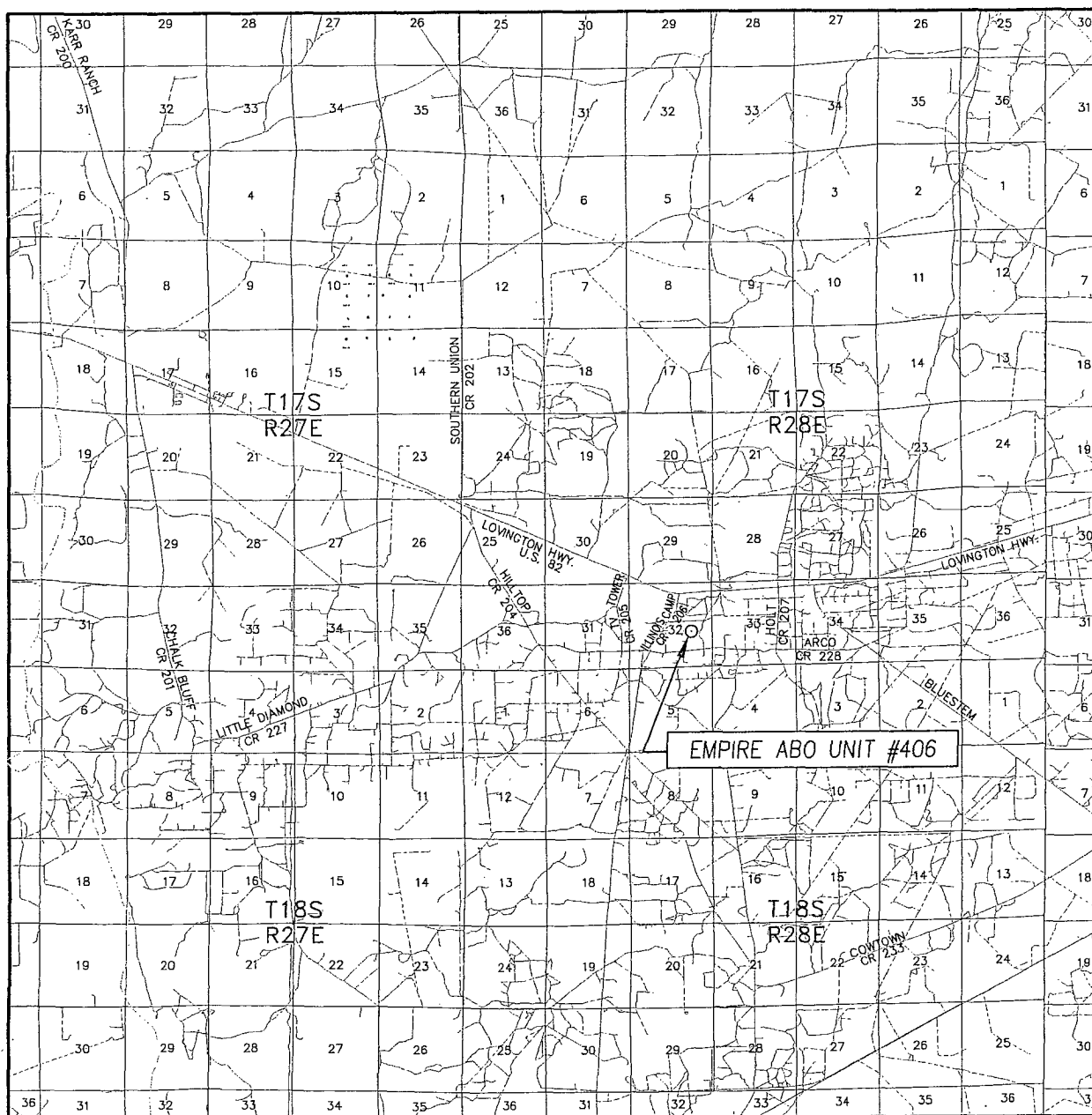


APACHE CORPORATION

EMPIRE ABO UNIT #406 WELL
LOCATED 2205 FEET FROM THE SOUTH LINE
AND 1285 FEET FROM THE EAST LINE OF SECTION 32,
TOWNSHIP 17 SOUTH, RANGE 28 EAST, N.M.P.M.,
EDDY COUNTY, NEW MEXICO

Survey Date: 4/20/11	Sheet 1 of 1 Sheets
W.O. Number: 11.11.0827	Dr. By: DSS
Date: 4/30/11	Rel. W.O.:
11110827	Scale: 1"=100'

THE NORTH



SEC. 32 TWP. 17-S RGE. 28-E

SURVEY N.M.P.M.

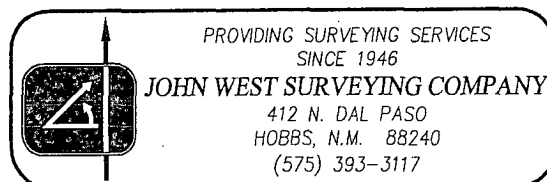
COUNTY EDDY STATE NEW MEXICO

DESCRIPTION 2205' FSL & 1285' FEL

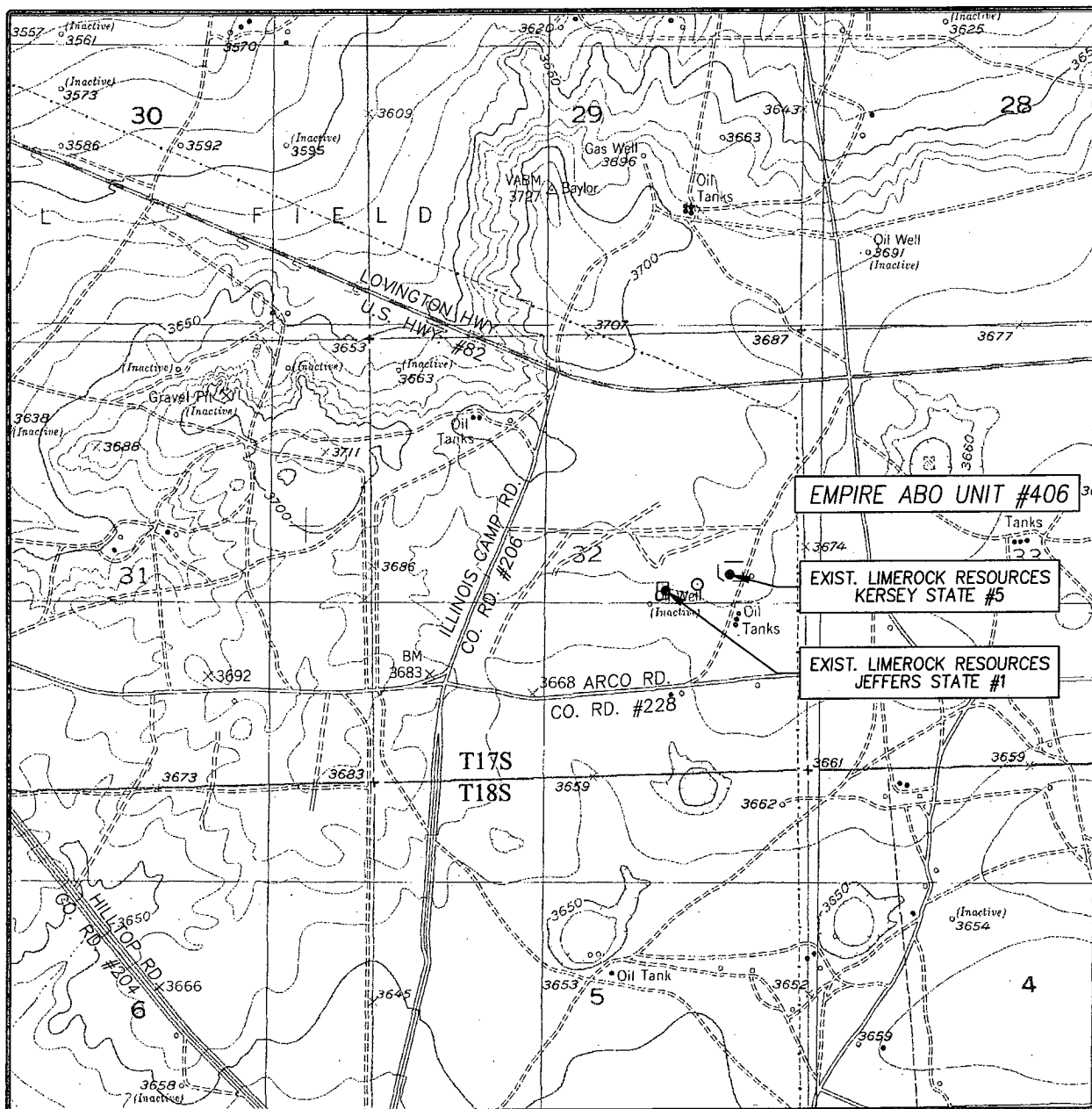
ELEVATION 3679'

OPERATOR APACHE CORPORATION

LEASE EMPIRE ABO UNIT



LOCATION VERIFICATION MAP



SCALE: 1" = 2000'

CONTOUR INTERVAL:
RED LAKE, N.M. - 10'

SEC. 32 TWP. 17-S RGE. 28-E

SURVEY N.M.P.M.

COUNTY EDDY STATE NEW MEXICO

DESCRIPTION 2205' FSL & 1285' FEL

ELEVATION 3679'

OPERATOR APACHE CORPORATION

LEASE EMPIRE ABO UNIT

U.S.G.S. TOPOGRAPHIC MAP
RED LAKE, N.M.

