

DISTRICT I  
1625 N. FRENCH DR., HOBBS, NM 88240  
DISTRICT II  
1301 W. GRAND AVENUE, ARTESIA, NM 88210  
DISTRICT III  
1000 RIO BRAZOS RD., AZTEC, NM 87410  
DISTRICT IV  
11885 S. ST. FRANCIS DR., SANTA FE, NM 87505

State of New Mexico  
Energy, Minerals & Natural Resources Department  
**OIL CONSERVATION DIVISION**  
1220 South St. Francis Dr.  
Santa Fe, New Mexico 87505

Form C-102  
Revised July 16, 2010  
Submit to Appropriate  
District Office

☐ AMENDED REPORT

**WELL LOCATION AND ACREAGE DEDICATION PLAT**

API Number <b>30-015-39008</b>	Pool Code <b>22040</b>	Pool Name <b>Empire ; ABO</b>
Property Code <b>309164</b>	Property Name <b>EMPIRE ABO UNIT</b>	Well Number <b>410</b>
OGRID No. <b>873</b>	Operator Name <b>APACHE CORPORATION</b>	Elevation <b>3660'</b>

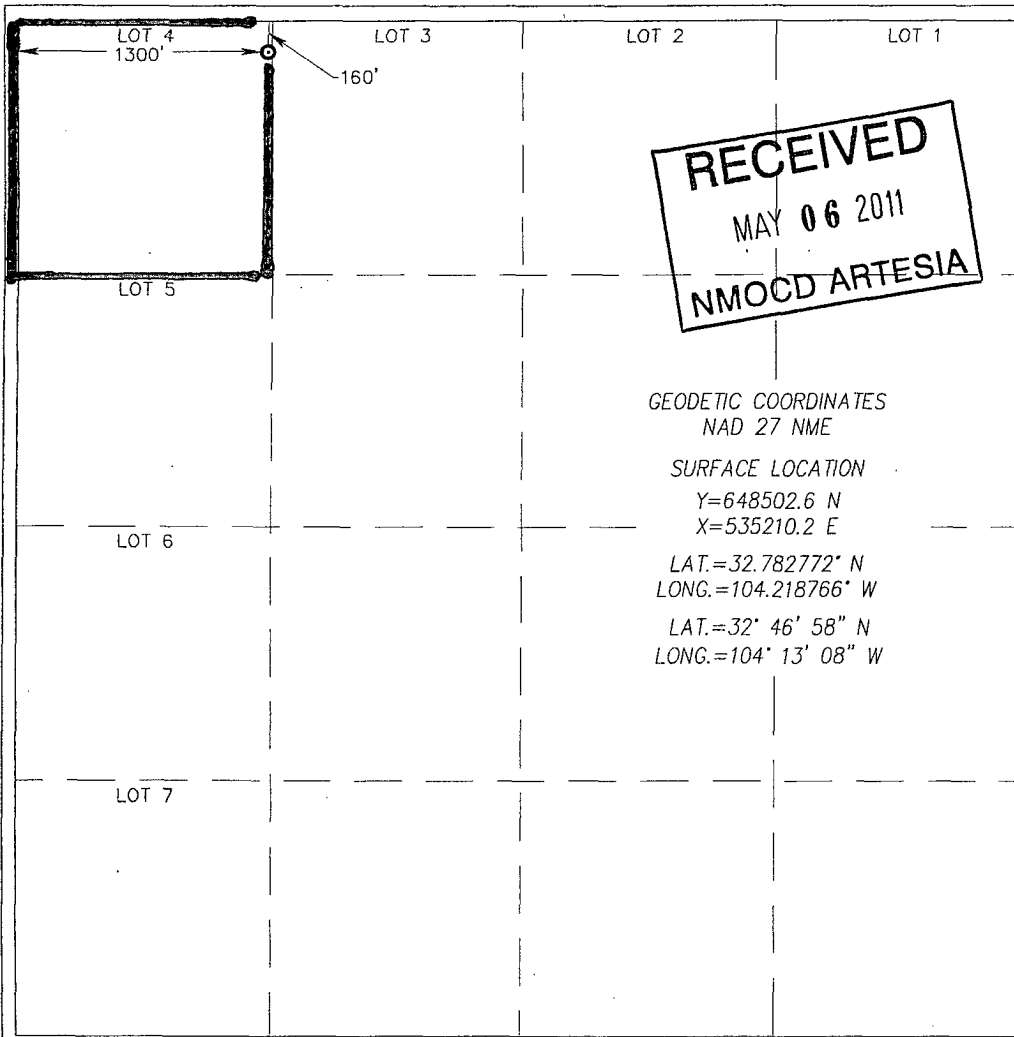
Surface Location

UL or lot No. <b>(D) 4</b>	Section <b>6</b>	Township <b>18-S</b>	Range <b>28-E</b>	Lot Idn	Feet from the <b>160</b>	North/South line <b>NORTH</b>	Feet from the <b>1300</b>	East/West line <b>WEST</b>	County <b>EDDY</b>
-------------------------------	---------------------	-------------------------	----------------------	---------	-----------------------------	----------------------------------	------------------------------	-------------------------------	-----------------------

Bottom Hole Location If Different From Surface

UL or lot No.	Section	Township	Range	Lot Idn	Feet from the	North/South line	Feet from the	East/West line	County
Dedicated Acres <b>43.8</b>									
Joint or Infill									
Consolidation Code									
Order No.									

NO ALLOWABLE WILL BE ASSIGNED TO THIS COMPLETION UNTIL ALL INTERESTS HAVE BEEN CONSOLIDATED OR A NON-STANDARD UNIT HAS BEEN APPROVED BY THE DIVISION



**OPERATOR CERTIFICATION**

I hereby certify that the information herein is true and complete to the best of my knowledge and belief, and that this organization either owns a working interest or unleased mineral interest in the land including the proposed bottom hole location or has a right to drill this well at this location pursuant to a contract with an owner of such mineral or working interest, or to a voluntary pooling agreement or a compulsory pooling order heretofore entered by the division.

*Sorina L. Flores* 5/4/11  
Signature Date  
**Sorina L. Flores**  
Printed Name  
**sorina.flores@apachecorp.com**  
E-mail Address

**SURVEYOR CERTIFICATION**

I hereby certify that the well location shown on this plat was plotted from field notes of actual surveys made by me or under my supervision, and that the same is true and correct to the best of my belief.

APRIL 15, 2011

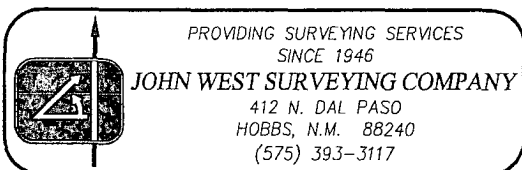
Date of Survey  
Signature & Seal of Professional Surveyor:

**RONALD J. EIDSON**  
NEW MEXICO  
3239  
*Ronald J. Eidson* 5/02/2011  
Certificate Number  
Gary G. Eidson 12641  
Ronald J. Eidson 3239  
DSS JWSC W.O.: 11.11.0838

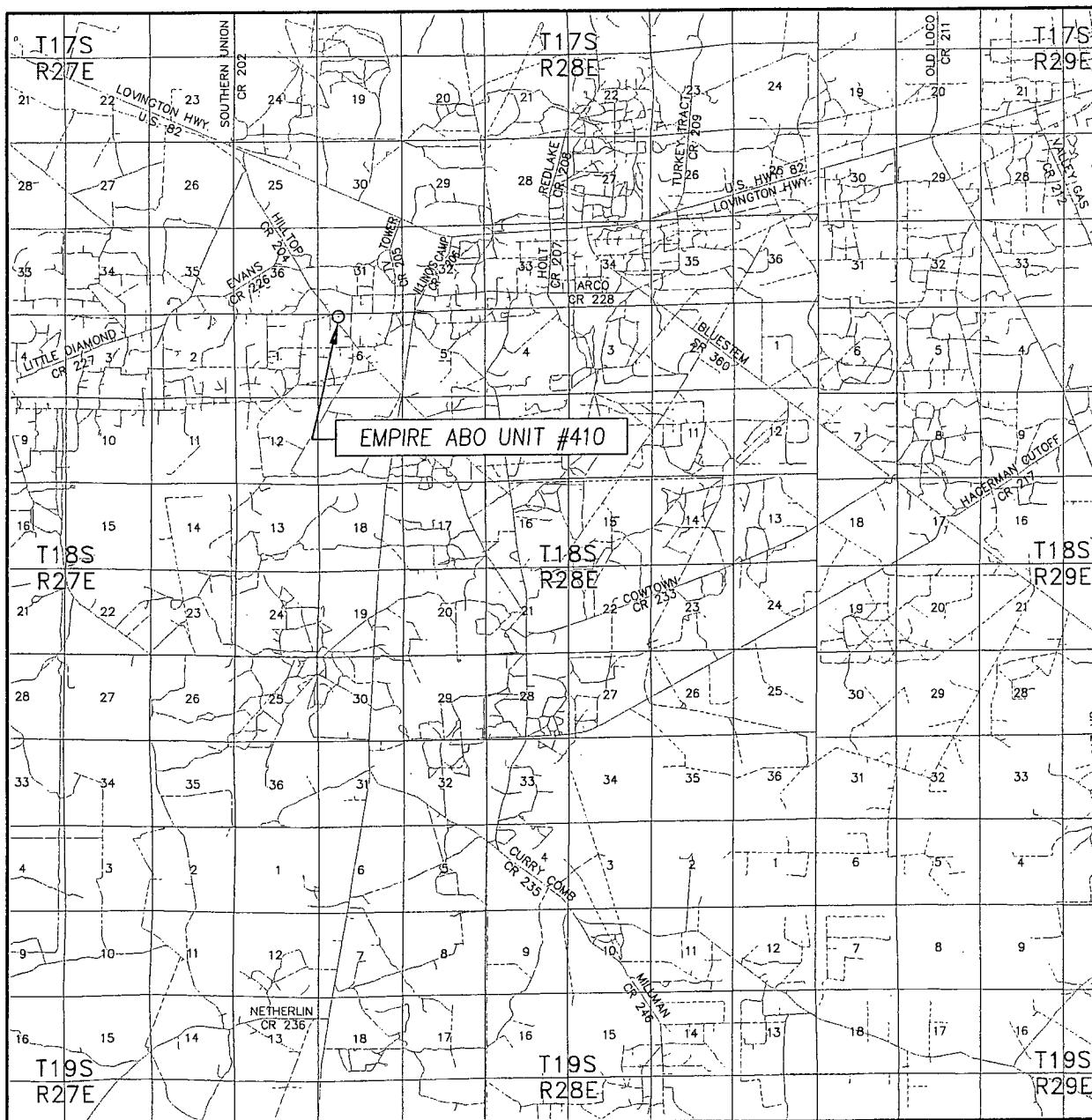
## NEW MEXICO



Survey Date: 4/15/11		Sheet 1 of 1 Sheets	
W.O. Number: 11.11.0838		Dr. By: DSS	Rev 1:
Date: 4/29/11	Rel. W.O.:	11110838	Scale: 1"=100'



# VICINITY MAP



SCALE: 1" = 2 MILES

SEC. 6 TWP. 18-S RGE. 28-E

SURVEY N.M.P.M.

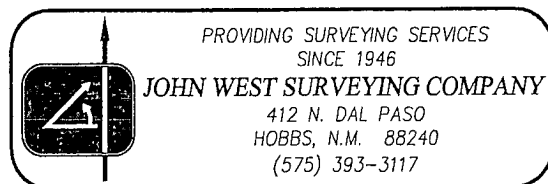
COUNTY EDDY STATE NEW MEXICO

DESCRIPTION 160' FNL & 1300' FWL

ELEVATION 3660'

OPERATOR APACHE CORPORATION

LEASE EMPIRE ABO UNIT



NORTH



CONTOUR INTERVAL:  
RED LAKE, N.M. - 10'

SURVEY N.M.P.M.

DESCRIPTION 160' FNL & 1300' FWL

OPERATOR APACHE CORPORATION

LEASE EMPIRE ABO UNIT

U.S.G.S. TOPOGRAPHIC MAP  
RED LAKE, N.M.



PROVIDING SURVEYING SERVICES  
SINCE 1946

**JOHN WEST SURVEYING COMPANY**

412 N. DAL PASO  
HOBBS, N.M. 88240  
(575) 393-3117