

EC

## OCD-ARTESIA

Form 3160-3  
(August 1999)UNITED STATES  
DEPARTMENT OF THE INTERIOR  
BUREAU OF LAND MANAGEMENTFORM APPROVED  
OMB No. 1004-0136  
Expires November 30, 2000

## APPLICATION FOR PERMIT TO DRILL OR REENTER

1a. Type of Work: <input checked="" type="checkbox"/> DRILL <input type="checkbox"/> REENTER		5. Lease Serial No. NMLC067849
1b. Type of Well: <input checked="" type="checkbox"/> Oil Well <input type="checkbox"/> Gas Well <input type="checkbox"/> Other <input checked="" type="checkbox"/> Single Zone <input type="checkbox"/> Multiple Zone		6. If Indian, Allottee or Tribe Name
2. Name of Operator DEVON ENERGY PRODUCTION CO L P		7. If Unit or CA Agreement, Name and No.
Contact: KAREN COTTOM E-Mail: karen.cottom@dnv.com		8. Lease Name and Well No. EAGLE 35D FEDERAL 17
3a. Address 20 NORTH BROADWAY SUITE 1500 OKLAHOMA CITY, OK 73102	3b. Phone No. (include area code) Ph: 405.228.7512 Fx: 405.552.4621	9. API Well No. 30-015-33267
4. Location of Well (Report location clearly and in accordance with any State requirements. *) At surface NWNW 430FNL 940FWL At proposed prod. zone NWNW 430FNL 940FWL		10. Field and Pool, or Exploratory RED LAKE; GLORIETA-YESO, NE
14. Distance in miles and direction from nearest town or post office* APPROX 5 MILES SOUTHEAST OF ARTESIA NM		11. Sec., T., R., M., or Blk. and Survey or Area Sec 35 T17S R27E Mer NMP SME: BLM
15. Distance from proposed location to nearest property or lease line, ft. (Also to nearest drig. unit line, if any)	16. No. of Acres in Lease 800.00	12. County or Parish EDDY
18. Distance from proposed location to nearest well, drilling, completed, applied for, on this lease, ft.	19. Proposed Depth 4000 MD	13. State NM
21. Elevations (Show whether DF, KB, RT, GL, etc.) 3542 GL	22. Approximate date work will start 12/31/2003	17. Spacing Unit dedicated to this well 40.00
23. Estimated duration 45 DAYS		20. BLM/BIA Bond No. on file

## 24. Attachments

## ROSWELL CONTROLLED WATER BASIN

The following, completed in accordance with the requirements of Onshore Oil and Gas Order No. 1, shall be attached to this form:

- |                                                                                                                                                 |                                                                                                    |
|-------------------------------------------------------------------------------------------------------------------------------------------------|----------------------------------------------------------------------------------------------------|
| 1. Well plat certified by a registered surveyor.                                                                                                | 4. Bond to cover the operations unless covered by an existing bond on file (see Item 20 above).    |
| 2. A Drilling Plan.                                                                                                                             | 5. Operator certification                                                                          |
| 3. A Surface Use Plan (if the location is on National Forest System Lands, the SUPO shall be filed with the appropriate Forest Service Office). | 6. Such other site specific information and/or plans as may be required by the authorized officer. |

25. Signature (Electronic Submission)	Name (Printed/Typed) KAREN COTTOM	Date 12/10/2003
Title OPERATIONS TECHNICIAN		
Approved by (Signature) /s/ Joe G. Lara	Name (Printed/Typed) /s/ Joe G. Lara	Date 29 JAN 2004
Title ACTING FIELD MANAGER		
Office CARLSBAD FIELD OFFICE		

Application approval does not warrant or certify the applicant holds legal or equitable title to those rights in the subject lease which would entitle the applicant to conduct operations thereon.  
Conditions of approval, if any, are attached.

APPROVAL FOR 1 YEAR

Title 18 U.S.C. Section 1001 and Title 43 U.S.C. Section 1212, make it a crime for any person knowingly and willfully to make to any department or agency of the United States any false, fictitious or fraudulent statements or representations as to any matter within its jurisdiction.

Additional Operator Remarks (see next page)

Electronic Submission #25964 verified by the BLM Well Information System  
For DEVON ENERGY PRODUCTION CO L P, sent to the Carlsbad  
Committed to AFMSS for processing by LINDA ASKWIG on 12/11/2003 (04LA0151AE)

APPROVAL SUBJECT TO  
GENERAL REQUIREMENTS  
AND SPECIAL STIPULATIONS  
ATTACHED

Witness Surface Casing.

\*\* BLM REVISED \*\* BLM REVISED \*\* BLM REVISED \*\* BLM REVISED \*\* BLM REVISED \*\*

**Additional Operator Remarks:**

Devon Energy Production Company, LP proposes to drill a San Andres, Glorieta Yeso well per the approved Master Drilling and Surface Use Plan for the Red Lake Field Area to 4000' TD for commercial quantities of oil and gas. If the well is deemed noncommercial the well bore will be plugged and abandoned per Federal regulations.

Directions: From the junction of US Hwy 82 and Co. Rd. 204, go south 0.1 mile to Co. Rd. 225; thence south on 225 for approx 2.1 mile to lease road; thence northwest on lease road for approx 0.4 mile to lease road; thence north on lease road for approx 0.3 mile to proposed well pad.  
Please see attached MDSUP.

DISTRICT I  
1625 N. French Dr., Hobbs, NM 88240

DISTRICT II  
811 South First, Artesia, NM 88210

DISTRICT III  
1000 Rio Brazos Rd., Aztec, NM 87410

DISTRICT IV  
2040 South Pacheco, Santa Fe, NM 87505

State of New Mexico  
Energy, Minerals and Natural Resources Department

Form C-102  
Revised March 17, 1999

Submit to Appropriate District Office  
State Lease - 4 Copies  
Fee Lease - 3 Copies

OIL CONSERVATION DIVISION

2040 South Pacheco  
Santa Fe, New Mexico 87504-2088

☐ AMENDED REPORT

WELL LOCATION AND ACREAGE DEDICATION PLAT

API Number	Pool Code 96836	Pool Name RED LAKE GLORITEA YESO, NE
Property Code	Property Name EAGLE "35D" FEDERAL	Well Number 17
OGRID No. 6137	Operator Name DEVON ENERGY PRODUCTION CO., L.P.	Elevation 3542'

Surface Location

UL or lot No.	Section	Township	Range	Lot Idn	Feet from the	North/South line	Feet from the	East/West line	County
D	35	17 S	27 E		430	NORTH	940	WEST	EDDY

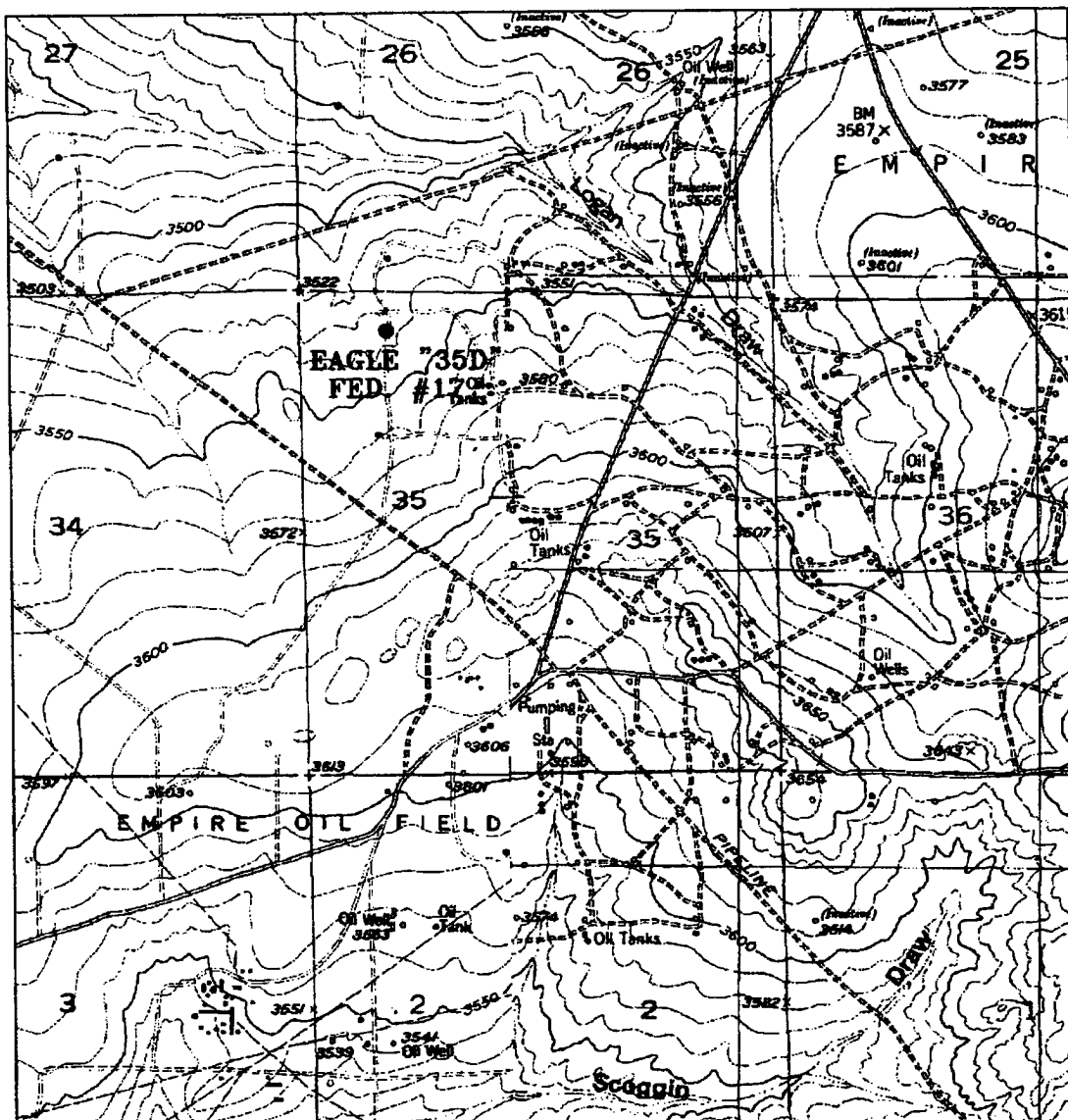
Bottom Hole Location If Different From Surface

UL or lot No.	Section	Township	Range	Lot Idn	Feet from the	North/South line	Feet from the	East/West line	County
Dedicated Acres 40	Joint or Infill	Consolidation Code	Order No.						

NO ALLOWABLE WILL BE ASSIGNED TO THIS COMPLETION UNTIL ALL INTERESTS HAVE BEEN CONSOLIDATED  
OR A NON-STANDARD UNIT HAS BEEN APPROVED BY THE DIVISION

	<p><b>OPERATOR CERTIFICATION</b></p> <p>I hereby certify the the information contained herein is true and complete to the best of my knowledge and belief.</p> <p><i>Karen Cottom</i> Signature</p> <p>Karen Cottom Printed Name</p> <p>Operations Technician Title</p> <p>December 9, 2003 Date</p> <p><b>SURVEYOR CERTIFICATION</b></p> <p>I hereby certify that the well location shown on this plat was plotted from field notes of actual surveys made by me or under my supervision, and that the same is true and correct to the best of my belief.</p> <p>NOVEMBER 26, 2003 Date Surveyed</p> <p><i>[Signature]</i> Signature of Professional Surveyor</p> <p>W.O. No. 3801 Certificate No. Gary L. Jones 7977</p> <p>PROFESSIONAL LAND SURVEYOR BASIC SURVEYS</p>
--	------------------------------------------------------------------------------------------------------------------------------------------------------------------------------------------------------------------------------------------------------------------------------------------------------------------------------------------------------------------------------------------------------------------------------------------------------------------------------------------------------------------------------------------------------------------------------------------------------------------------------------------------------------------------------------------------------------------------------------------------------------------------------------------------------------

Sheet 1 of 1 Sheets



# **EAGLE "35D" FEDERAL #17**

430' FNL AND 940' FWL

Section 35, Township 17 South, Range 27 East,  
N.M.P.M., Eddy County, New Mexico.



focused on excellence  
in the oilfield

P.O. Box 1786  
1120 N. West County Rd.  
Hobbs, New Mexico 88241  
(505) 393-7316 - Office  
(505) 392-3074 - Fax  
basinsurveys.com

W.O. Number: 3801AA - KJG CD#4

Survey Date: 11-25-2003

Scale: 1" = 2000'

Date: 11-26-2003

**DEVON ENERGY  
PROD. CO., L.P.**





**Devon Energy Corporation  
20 North Broadway  
Oklahoma City, Oklahoma 73102-8260**

# **Hydrogen Sulfide (H<sub>2</sub>S) Contingency Plan**

**For**

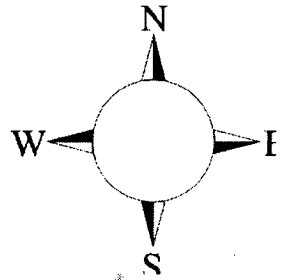
**Eagle 35D Federal # 17**

**430' FNL & 940' FWL,  
Sec-35, T-17S R-27E**

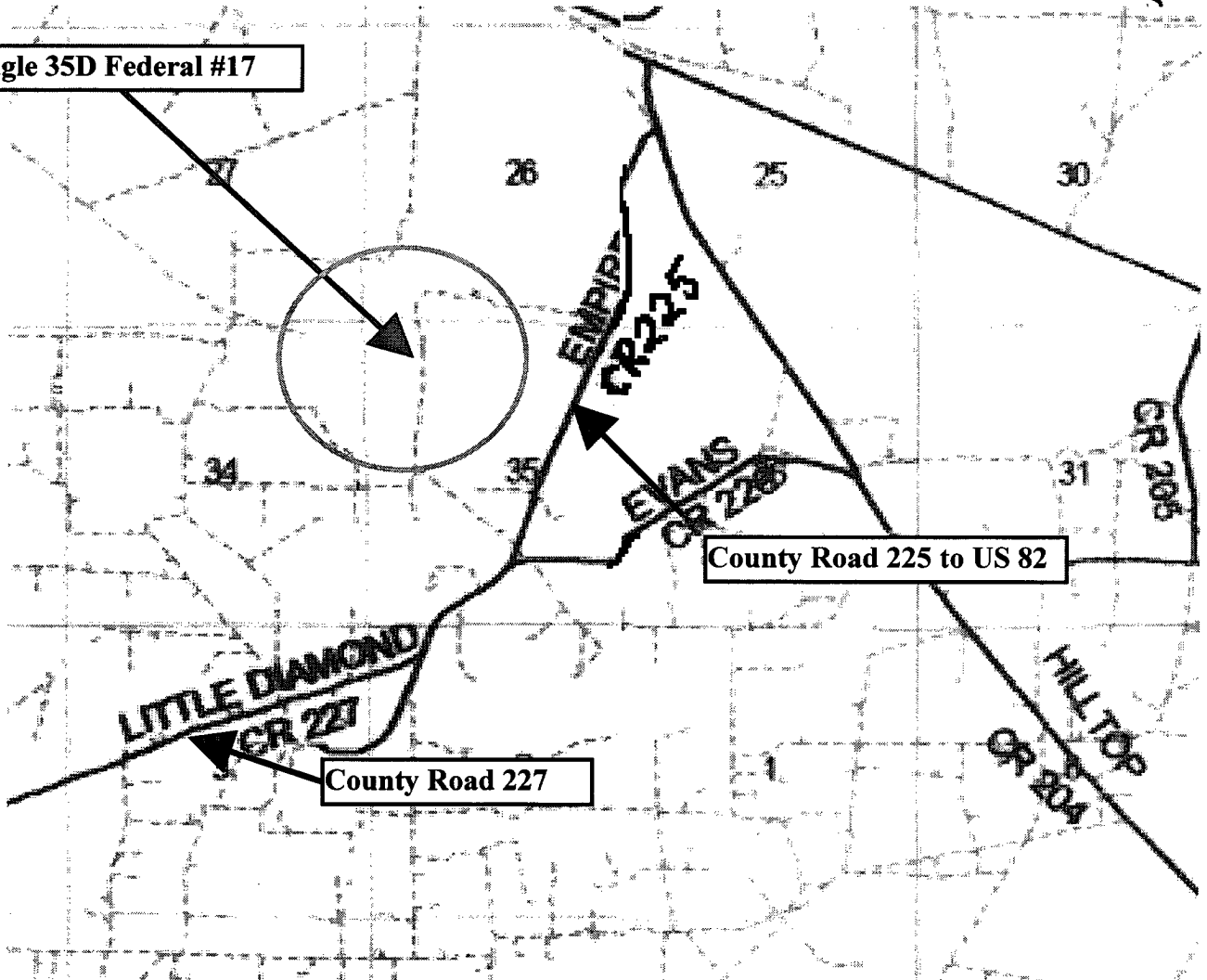
**Eddy County NM**

## Eagle 35D Federal # 17

This is an open drilling site. H<sub>2</sub>S monitoring equipment and emergency response equipment will be used within 500' of zones known to contain H<sub>2</sub>S, including warning signs, wind indicators and H<sub>2</sub>S monitor.



Eagle 35D Federal #17



Assumed 100 ppm H<sub>2</sub>S = 3000' (radius) Exposure  
100 ppm H<sub>2</sub>S concentration shall trigger activation of this plan.

### Escape

Crews shall escape upwind of escaping gas in the event of an emergency release of gas. Escape can be facilitated east on lease road. Crews should then block entrance to the location from the lease road so as not to allow anyone traversing into a hazardous area. There are no homes or buildings in or near the ROE.

## Emergency Procedures

In the case of a release of gas containing H<sub>2</sub>S, the first responder(s) must isolate the area and prevent entry by other persons into the 100 ppm ROE. Additionally the first responder(s) must evacuate any public places encompassed by the 100 ppm ROE. First responder(s) must take care not to injure themselves during this operation. Company and/or local officials must be contacted to aid in this operation. Evacuation of the public should be beyond the 100 ppm ROE.

All responders must have training in the detection of H<sub>2</sub>S, measures for protection against the gas, equipment used for protection and emergency response. Additionally, responders must be equipped with H<sub>2</sub>S monitors and air packs in order to control the release. Use the "buddy system" to ensure no injuries during the response.

## Ignition of Gas Source

Should control of the well be considered lost and ignition considered, take care to protect against exposure to Sulfur Dioxide (SO<sub>2</sub>). Intentional ignition must be coordinated with the NMOCD and local officials. Additionally the NM State Police may become involved. NM State Police shall be the Incident Command on scene of any major release. Take care to protect downwind whenever there is an ignition of the gas

## Characteristics of H<sub>2</sub>S and SO<sub>2</sub>

Common Name	Chemical Formula	Specific Gravity	Threshold Limit	Hazardous Limit	Lethal Concentration
Hydrogen Sulfide	H <sub>2</sub> S	1.189 Air = 1	10 ppm	100 ppm/hr	600 ppm
Sulfur Dioxide	SO <sub>2</sub>	2.21 Air = 1	2 ppm	N/A	1000 ppm

## Contacting Authorities

Devon Energy Corp. personnel must liaison with local and state agencies to ensure a proper response to a major release. Additionally, the OCD must be notified of the release as soon as possible but no later than 4 hours. Agencies will ask for information such as type and volume of release, wind direction, location of release, etc. Be prepared with all information available. The following call list of essential and potential responders has been prepared for use during a release. Devon Energy Corp. Company response must be in coordination with the State of New Mexico's 'Hazardous Materials Emergency Response Plan' (HMER)

## Devon Energy Corp. Company Call List

<u>Artesia (505)</u>	<u>Cellular</u>	<u>Office</u>	<u>Home</u>
Foreman – BJ Cathey .....	390-5893 .....	748-0176 .....	887-6026
Asst. Foreman – Bobby Jones.....	748-7447 .....	748-0176 .....	746-3194
Cecil Thurmond .....	748-7180 .....	748-0171 .....	887-1479
David Purdy .....	(432)631-2969 .....	(432)495-7279 ....	(432)683-0735
Engineer – Tom Pepper .....	(405) 203-2242 .....	(405) 552-4513 ...	(405) 728-8641

### Agency Call List

#### Eddy County (505)

##### **Artesia**

State Police.....	746-2703
City Police.....	746-2703
Sheriff's Office .....	746-9888
Ambulance .....	911
Fire Department .....	746-2701
LEPC (Local Emergency Planning Committee) .....	746-2122
NMOCD.....	748-1283

##### **Carlsbad**

State Police.....	885-3137
City Police.....	885-2111
Sheriff's Office .....	887-7551
Ambulance .....	911
Fire Department .....	885-2111
LEPC (Local Emergency Planning Committee).....	887-3798
US Bureau of Land Management.....	887-6544

New Mexico Emergency Response Commission (Santa Fe)	(505)476-9600
24 HR .....	(505) 827-9126
National Emergency Response Center (Washington, DC)	...(800) 424-8802

##### **Other**

Boots & Coots IWC .....	1-800-256-9688 or (281) 931-8884
Cudd Pressure Control.....	(915) 699-0139 or (915) 563-3356
Halliburton .....	(505) 746-2757
B. J. Services.....	(505) 746-3569

Flight For Life -4000 24th St, Lubbock, TX .....	(806) 743-9911
Aerocare -Rr 3 Box 49f, Lubbock, TX .....	(806) 747-8923
Med Flight Air Amb 2301 Yale Blvd SE #D3, Albuq, NM .....	(505) 842-4433
S B Air Med Svc 2505 Clark Carr Loop SE, Albuq, NM ....	(505) 842-4949

Prepared in conjunction with  
Wade Rohloff of;

