

UNITED STATES
DEPARTMENT OF THE INTERIOR
GEOLOGICAL SURVEY

30-005-60231

APPLICATION FOR PERMIT TO DRILL, DEEPEN, OR PLUG BACK

1. TYPE OF WORK
 a. TYPE OF WELL
 DRILL DEEPEN PLUG BACK
 b. TYPE OF WELL
 OIL WELL GAS WELL OTHER
 SINGLE ZONE MULTIPLE ZONE

2. NAME OF OPERATOR
 Shenandoah Oil Corporation

3. ADDRESS OF OPERATOR
 702 Gihls Tower West Midland, Texas 79701

4. LOCATION OF WELL (Report location clearly and in accordance with any State requirements.)*
 At surface 660' FSL 1980' FEL Sec. 23 T 11S R 26E
 At proposed prod. zone

5. LEASE DESIGNATION AND SERIAL NO.
 XL-12255-A

6. IF INDIAN, ALLOTTEE OR TRIBE NAME

7. UNIT AGREEMENT NAME

8. FARM OR LEASE NAME
 Federal "T"

9. WELL NO.
 1

10. FIELD AND POOL, OR WILDCAT
 Wildcat

11. SEC., T., R., M., OR BLK. AND SURVEY OR AREA
 Section 23 T 11S R 26E

12. COUNTY OR PARISH
 Chaves

13. STATE
 New Mexico

14. DISTANCE IN MILES AND DIRECTION FROM NEAREST TOWN OR POST OFFICE*
 10 miles East of Roswell, New Mexico

15. DISTANCE FROM PROPOSED* LOCATION TO NEAREST PROPERTY OR LEASE LINE, FT. (Also to nearest drig. unit line, if any)

16. NO. OF ACRES IN LEASE
 160

17. NO. OF ACRES ASSIGNED TO THIS WELL
 40

18. DISTANCE FROM PROPOSED LOCATION* TO NEAREST WELL, DRILLING COMPLETED, OR APPLIED FOR, ON THIS LEASE, FT.

19. PROPOSED DEPTH
 6100 ft.
 Siluro-Devonian

20. ROTARY OR CABLE TOOLS
 Rotary

21. ELEVATIONS (Show whether DE, RT, GR, etc.)
 3632GR

22. APPROX. DATE WORK WILL START*
 October 1, 1972

RECEIVED

SEP 2 1972

PROPOSED CASING AND CEMENTING PROGRAM

SIZE OF HOLE	SIZE OF CASING	WEIGHT PER FOOT	SETTING DEPTH	QUANTITY OF CEMENT
17 1/2"	13 3/8"	48#	400'	Circ. to surface
12 1/4"	8 5/8"	24#	1700'	Circ. to surface
7 7/8"	4 1/2"	9.5# & 10.5#	6100'	Sufficient to cover all potential productive zones.

This proposed well will be drilled to 6100 ft. to test the Siluro-Devonian formation

Mud Program: 0-400 wt. 8.5-8.7 Vis. 32-34; 400-1400 wt. 8.5-8.7 Vis. 30-32; 1400-4300 wt. 8.5-8.8 Vis. 30-32; 4300-5000 wt. 9.4-9.8 Vis. 30-38; 5000-6100 wt. 9-9.8 Vis. 36-45 Filtrate 10-12 cc. hydraulic blow out preventers will be tested daily to 1000 psi. Pump and plug method will be used in cementing all strings of casing.

RECEIVED
SEP 1 1972
U. S. GEOLOGICAL SURVEY
ARTESIA, NEW MEXICO

IN ABOVE SPACE DESCRIBE PROPOSED PROGRAM: If proposal is to deepen or plug back, give data on present productive zone and proposed new productive zone. If proposal is to drill or deepen directionally, give pertinent data on subsurface locations and measured and true vertical depths. Give blowout preventer program, if any.

SIGNED Thomas E. Fenyo TITLE District Production Supt. DATE August 31, 1972
 (This space for Federal or State office use)

PERMIT NO. _____ APPROVAL DATE _____

APPROVED
SEP 19 1972
H. L. BECKMAN
ACTING DISTRICT ENGINEER

THIS APPROVAL IS RESCINDED IF OPERATIONS ARE NOT COMMENCED WITHIN 3 MONTHS.
DEC 19 1972

*See Instructions On Reverse Side

NEW MEXICO OIL CONSERVATION COMMISSION
WELL LOCATION AND ACREAGE DEDICATION PLAT

Form C-102
Supersedes C-128
Effective 1-1-65

All distances must be from the outer boundaries of the Section.

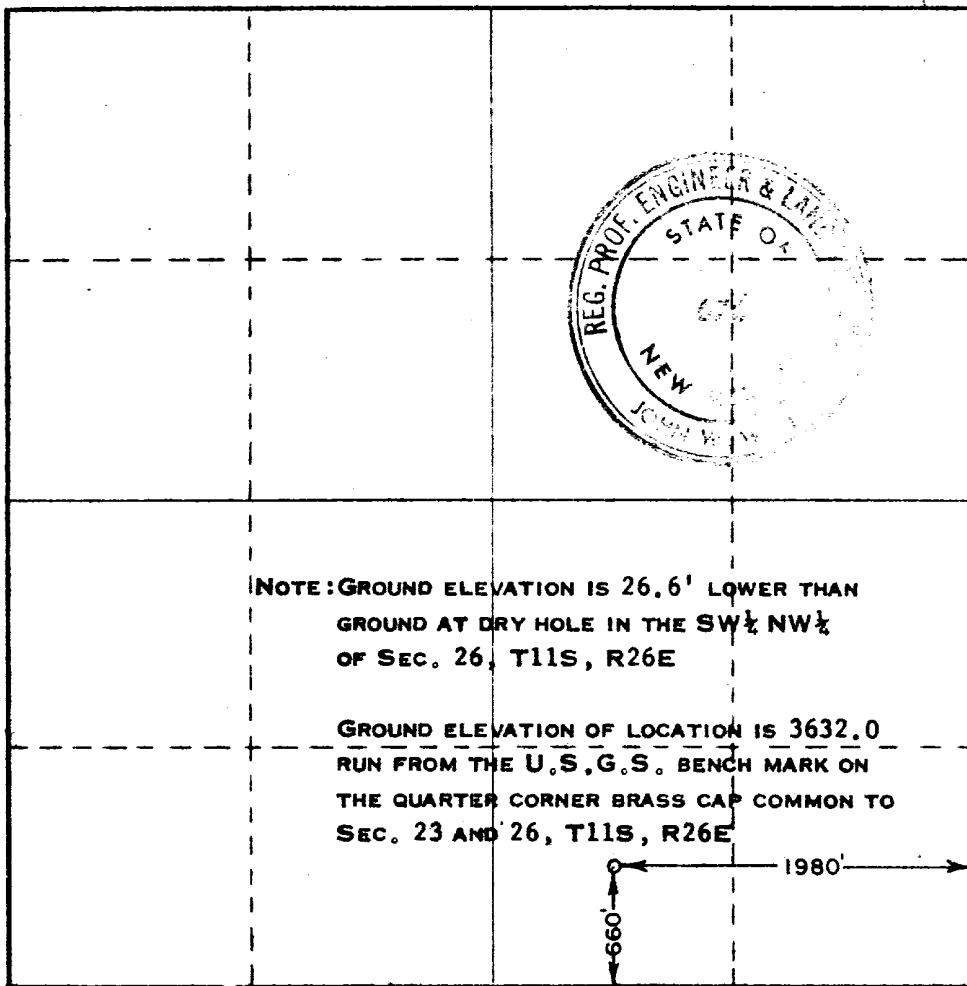
Operator SHENANDOAH OIL CORP.		Lease FEDERAL "T"			Well No. 1
Unit Letter Q	Section 23	Township 11 SOUTH	Range 26 EAST	County CHAVES	
Actual Footage Location of Well: 660 feet from the SOUTH line and 1980 feet from the EAST line					
Ground Level Elev. 3632 GL	Producing Formation Siluro-Devonian	Pool Wildcat		Dedicated Acreage: 40 Acres	

- Outline the acreage dedicated to the subject well by colored pencil or hachure marks on the plat below.
- If more than one lease is dedicated to the well, outline each and identify the ownership thereof (both as to working interest and royalty).
- If more than one lease of different ownership is dedicated to the well, have the interests of all owners been consolidated by communitization, unitization, force-pooling, etc?

Yes No If answer is "yes," type of consolidation _____

If answer is "no," list the owners and tract descriptions which have actually been consolidated. (Use reverse side of this form if necessary.) _____

No allowable will be assigned to the well until all interests have been consolidated (by communitization, unitization, forced-pooling, or otherwise) or until a non-standard unit, eliminating such interests, has been approved by the Commission.



CERTIFICATION

I hereby certify that the information contained herein is true and complete to the best of my knowledge and belief.

Name Thomas E. Fenno
THOMAS E. FENNO
Position
Dist. Production Supt.
Company
Shenandoah Oil Corporation
Date
August 31, 1972

I hereby certify that the well location shown on this plat was plotted from field notes of actual surveys made by me or under my supervision, and that the same is true and correct to the best of my knowledge and belief.

Date Surveyed
AUGUST 15, 1972
Registered Professional Engineer and/or Land Surveyor

John W. West
Certificate No. 676



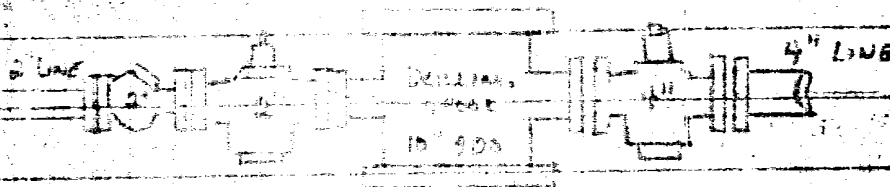
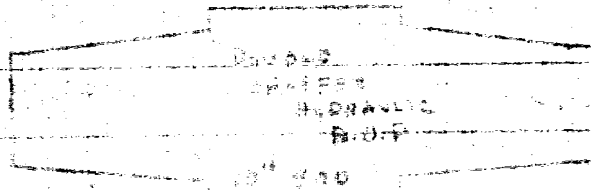
ILLEGIBLE

To be used on Federal T-101

for Rig #4

BASE ROTARY TABLE

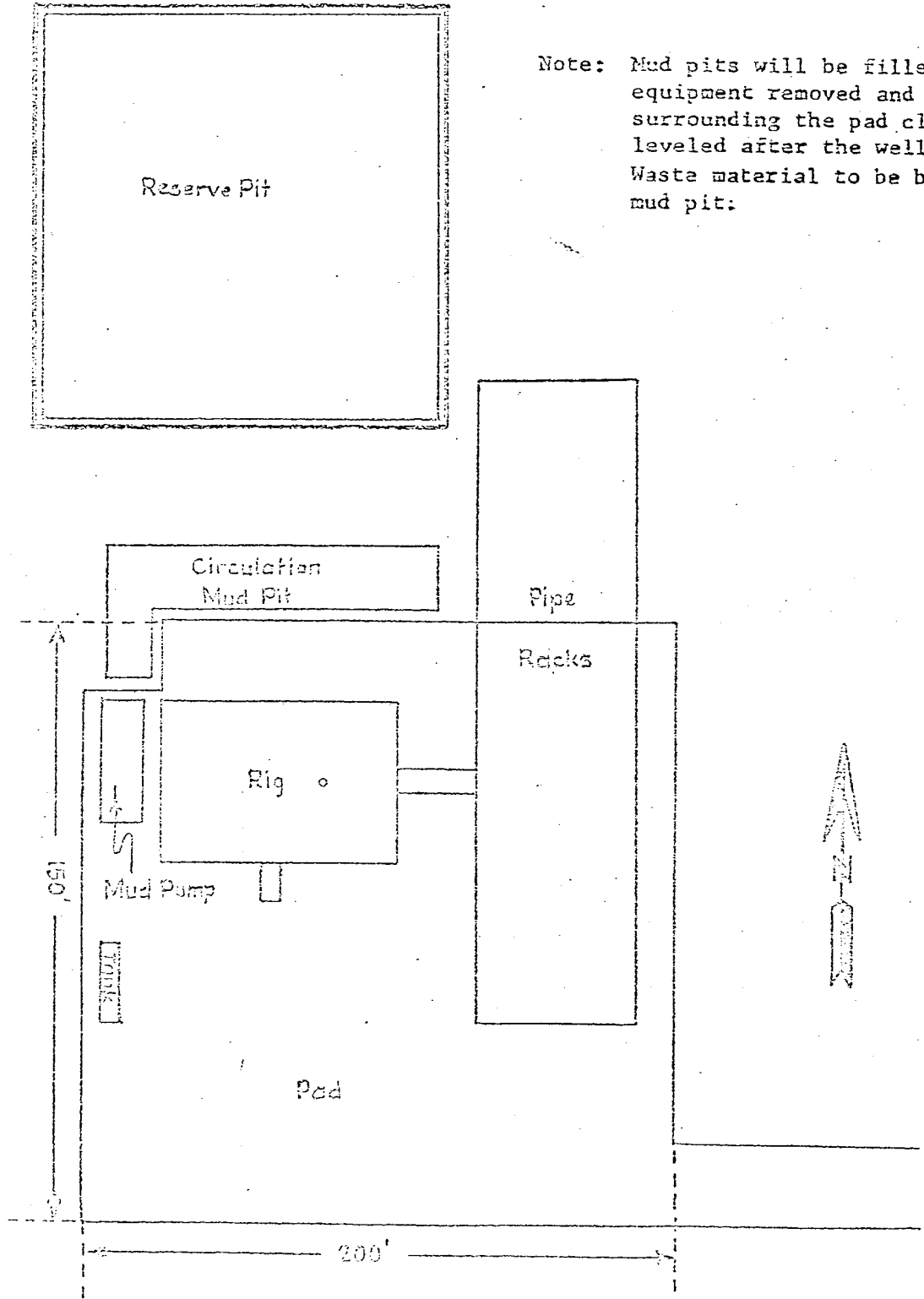
FLOW LINE WILL HAVE TO BE
MADE TO FIT UNDER
Rotary



GROUND LINE

APPROVED
1972

DRILLING LOCATION LAYOUT
Schematic
(Not Scaled)



Note: Mud pits will be filled. Drilling equipment removed and surface surrounding the pad cleaned up and leveled after the well is completed. Waste material to be buried in the mud pit:

UNITED STATES
DEPARTMENT OF THE ARMY
CORPS OF ENGINEERS

5130 17 NE
(COMANCHE SPRING)

