

UNITED STATES  
DEPARTMENT OF THE INTERIOR  
BUREAU OF LAND MANAGEMENT

N. M. Oil Co. Division  
611 S. 1ST ST.  
ARTESIA, NM 88210-2804

clst

APPLICATION FOR PERMIT TO DRILL OR DEEPEN

1a. TYPE OF WORK  
 DRILL  DEEPEN

b. TYPE OF WELL  
 OIL WELL  GAS WELL  OTHER   
 SINGLE ZONE  MULTIPLE ZONE

2. NAME OF OPERATOR  
 169680 Gothic Production Corporation

3. ADDRESS AND TELEPHONE NO.  
 c/o J. O. Easley, Inc., P. O. Box 245, Artesia, NM 88211-0245 (505) 746-1070

4. LOCATION OF WELL (Report location clearly and in accordance with any State requirements. \*)  
 At Surface 2000' FSL & 660' FWL, Unit L (NW1/4SW1/4)  
 At proposed prod. Zone 2000' FSL & 660' FWL, Unit L (NW1/4SW1/4)

14. DISTANCE IN MILES AND DIRECTION FROM NEAREST TOWN OR POST OFFICE\*  
 14.75 miles North of Bitter Lake National Wildlife Refuge

5. LEASE DESIGNATION AND SERIAL NO.  
 NM-36409

6. IF INDIAN, ALLOTTEE OR TRIBE NAME  
 N/A

7. UNIT AGREEMENT NAME  
 23554

8. FARM OR LEASE NAME, WELL NO.  
 McClellan MOC Federal #14

9. API WELL NO.  
 30-005-63176

10. FIELD AND POOL OR WILDCAT  
 Pecos Slope Abo (82730)

11. SEC., T., R., M., OR BLK. AND SURVEY OR AREA  
 29, 5S-25E, N.M.P.M.

12. COUNTY FOR PARISH  
 Chaves

13. STATE  
 NM

15. DISTANCE FROM PROPOSED \* LOCATION TO NEAREST PROPERTY OR LEASE LINE, FT.  
 2000'

16. NO. OF ACRES IN LEASE  
 2441.49

17. NO. OF ACRES ASSIGNED TO THIS WELL  
 160.00

18. DISTANCE FROM PROPOSED LOCATION \* TO NEAREST WELL, DRILLING, COMPLETED OR APPLIED FOR, ON THIS LEASE, FT.  
 1850' ±

19. PROPOSED DEPTH  
 4050'

20. ROTARY OR CABLE TOOLS  
 Rotary

21. ELEVATIONS (Show whether DF, RT, GR, etc.)  
 3925'

22. APPROX. DATE WORK WILL START \*  
 ASAP

23. PROPOSED CASING AND CEMENTING PROGRAM

SIZE OF HOLE	GRADE, SIZE OF CASING	WEIGHT PER FOOT	SETTING DEPTH	QUANTITY OF CEMENT
17 1/2"	13 3/8"	48#	40'	Ready-Mix to surface
12 1/4"	8 5/8"	24#	900'	550 sxs
7 7/8"	4 1/2"	10.5#	4050'	475 sxs

Post ID-1  
9-25-98  
API + LOC

Anticipated Duration of Program: Drilling - Ten (10) days  
 Completion - Nine (9) days

See attached for complete Drilling Program

EXHIBITS

- Exhibit "A": Drilling Program
- Exhibit "B": Surface Use Plan
- Exhibit "C": Land Survey Plat
- Exhibit "D": Location Plat
- Exhibit "E": Existing Well Plat
- Exhibit "F": Rig Layout
- Exhibit "G": BOP Layout

IN ABOVE SPACE DESCRIBE PROPOSED PROGRAM: If proposal is to deepen, give data on present productive zone and proposed new productive zone. If proposal is to drill or deepen directionally, give pertinent data on subsurface locations and measured and true vertical depths. Give blowout preventer program, if any.

24. SIGNED Michael R. Burch, CPL TITLE Permit Agent for Gothic Production Corporation DATE 8-27-98

(This space for Federal or State office use)

PERMIT NO. \_\_\_\_\_ APPROVAL DATE \_\_\_\_\_

Application approval does not warrant or certify that the applicant holds legal or equitable title to those rights in the subject lease which would entitle the applicant to conduct operations thereon.

CONDITIONS OF APPROVAL, IF ANY:  
 APPROVED BY (ORIG. SGD.) ARMANDO A. LOPEZ TITLE Acting Assistant Field Office Manager, Lands and Minerals DATE SEP 17 1998

\*See Instructions On Reverse Side

OIL CONSERVATION DIVISION

P.O. Box 2088

Santa Fe, New Mexico 87504-2088

AMENDED REPORT

DISTRICT III  
Rio Brazos Rd., Aztec, NM 87410  
DISTRICT IV  
P.O. BOX 2088, SANTA FE, N.M. 87504-2088

WELL LOCATION AND ACREAGE DEDICATION PLAT

API Number 30-15-	Pool Code 82730	Pool Name Pecos Slope Abo
Property Code	Property Name McCLELLAN MOC FEDERAL	Well Number 14
OGRID No. 169680	Operator Name GOTHIC ENERGY CORP.	Elevation 3825

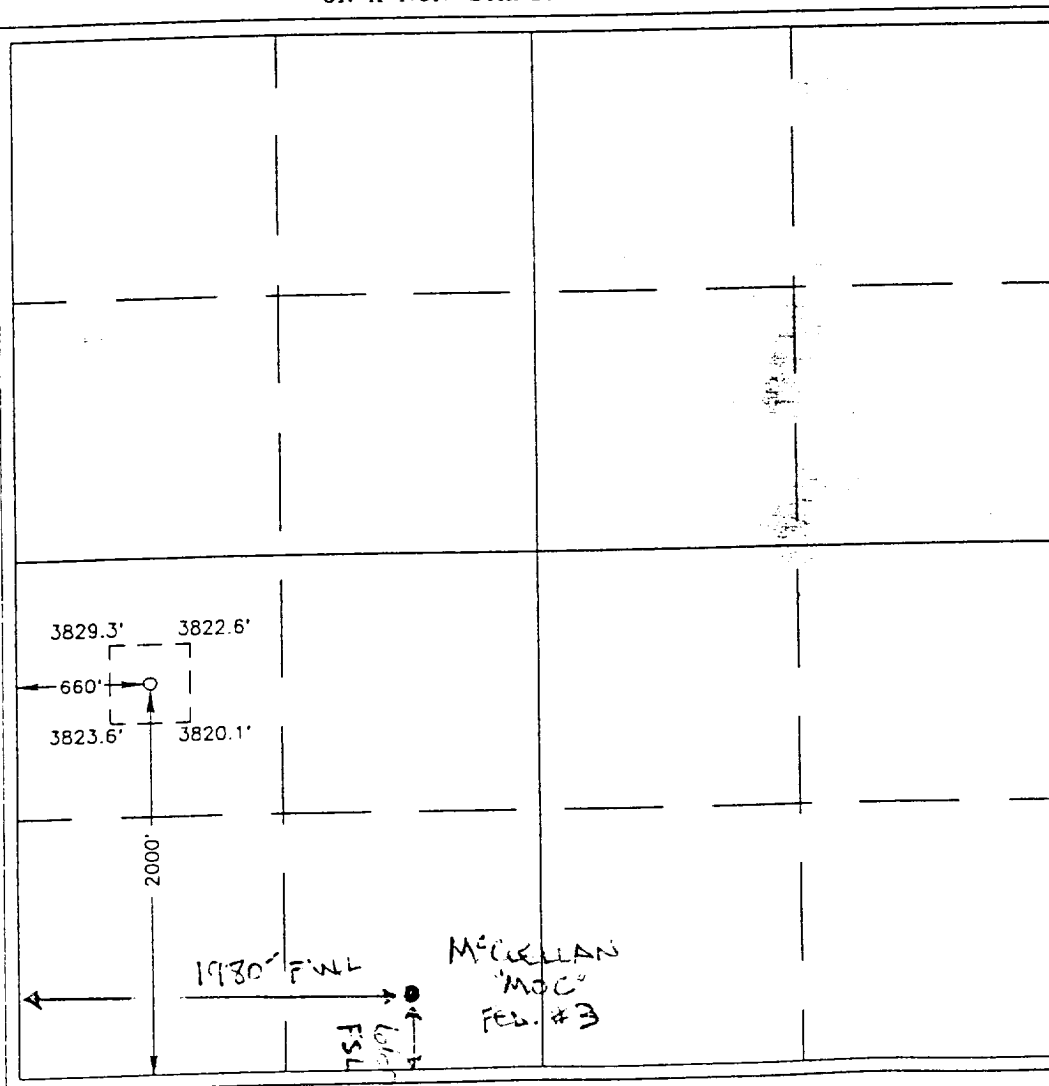
Surface Location

UL or lot No.	Section	Township	Range	Lot Idn	Feet from the	North/South line	Feet from the	East/West line	County
L	29	5 S	25 E		2000	SOUTH	660	WEST	CHAVES

Bottom Hole Location If Different From Surface

UL or lot No.	Section	Township	Range	Lot Idn	Feet from the	North/South line	Feet from the	East/West line	County
Dedicated Acres 160	Joint or Infill	Consolidation Code	Order No.						

NO ALLOWABLE WILL BE ASSIGNED TO THIS COMPLETION UNTIL ALL INTERESTS HAVE BEEN CONSOLIDATED OR A NON-STANDARD UNIT HAS BEEN APPROVED BY THE DIVISION



**OPERATOR CERTIFICATION**

I hereby certify the the information contained herein is true and complete to the best of my knowledge and belief.

*Michael R. Burch, CPL*  
Signature  
Michael R. Burch, CPL  
Printed Name  
Agent for  
Gothic Energy Corporation  
Title  
8-27-98  
Date

---

**SURVEYOR CERTIFICATION**

I hereby certify that the well location shown on this plat was plotted from field notes of actual surveys made by me or under my supervision and that the same is true and correct to the best of my belief.

AUGUST 13, 1998  
Date Surveyed  
DMCC

Signature & Seal of Professional Surveyor  
*Ronald G. Eidson*  
8-19-98  
198-1-13-98

Certificate No. RONALD G. EIDSON 3239  
GARY EIDSON 12641  
DONALD McDONALD 12185  
REGISTERED PROFESSIONAL SURVEYOR

DISTRICT I  
P.O. Box 1980, Hobbs, NM 88241-1980

State of New Mexico  
Energy, Minerals and Natural Resources Depart

EXHIBIT "C"

Form C-102  
Revised February 10, 1994  
Submit to Appropriate District Office  
State Lease - 4 Copies  
Fee Lease - 3 Copies

DISTRICT II  
P.O. Drawer DD, Artesia, NM 86211-0719

DISTRICT III  
1000 Rio Brazos Rd., Aztec, NM 87410

OIL CONSERVATION DIVISION  
P.O. Box 2088

Santa Fe, New Mexico 87504-2088

DISTRICT IV  
P.O. BOX 2088, SANTA FE, N.M. 87504-2088

AMENDED REPORT

WELL LOCATION AND ACREAGE DEDICATION PLAT

API Number 30-15-	Pool Code 82730	Pool Name Pecos Slope Abo
Property Code	Property Name McCLELLAN MOC FEDERAL	Well Number 14
OGRID No. 169680	Operator Name GOTHIC ENERGY CORP.	Elevation 3825

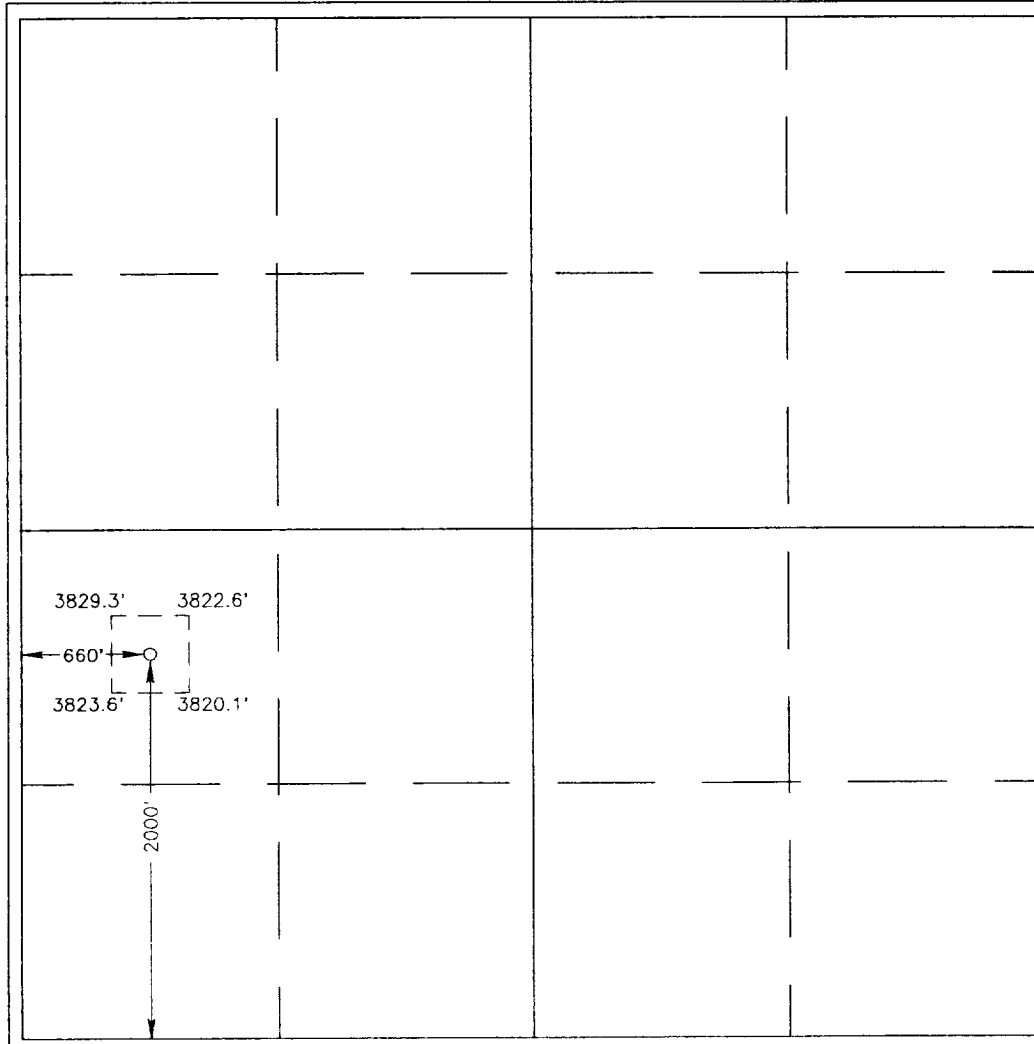
Surface Location

UL or lot No.	Section	Township	Range	Lot Idn	Feet from the	North/South line	Feet from the	East/West line	County
L	29	5 S	25 E		2000	SOUTH	660	WEST	CHAVES

Bottom Hole Location If Different From Surface

UL or lot No.	Section	Township	Range	Lot Idn	Feet from the	North/South line	Feet from the	East/West line	County
Dedicated Acres 160	Joint or Infill	Consolidation Code	Order No.						

NO ALLOWABLE WILL BE ASSIGNED TO THIS COMPLETION UNTIL ALL INTERESTS HAVE BEEN CONSOLIDATED OR A NON-STANDARD UNIT HAS BEEN APPROVED BY THE DIVISION



**OPERATOR CERTIFICATION**

I hereby certify the the information contained herein is true and complete to the best of my knowledge and belief.

*Michael R. Burch*  
Signature

Michael R. Burch, CPL  
Printed Name

Agent for  
Gothic Energy Corporation  
Title

8-27-98  
Date

**SURVEYOR CERTIFICATION**

I hereby certify that the well location shown on this plat was plotted from field notes of actual surveys made by me or under my supervision, and that the same is true and correct to the best of my belief.

AUGUST 13, 1998  
Date Surveyed

DMCC

*Ronald E. Edson*  
Signature Seal of Professional Surveyor

8-19-98  
98-11-1145

Certificate No. RONALD E. EDSON 3239  
GARY BISSON 12641  
WAGN. McDONALD 12185

EXHIBIT "G"  
McClellan MOC Federal #14

