

District I
1625 N. French Dr., Hobbs, NM 88240
District II
811 South First, Artesia, NM 88210
District III
1000 Rio Brazos Road, Aztec, NM 87410
District IV
2040 South Pacheco, Santa Fe, NM 87505

State of New Mexico
Energy Minerals and Natural Resources

Oil Conservation Division
2040 South Pacheco
Santa Fe, NM 87505

Form C-101
Revised March 17, 1999

Submit to appropriate District Office
State Lease - 6 Copies
Fee Lease - 5 Copies

☐ AMENDED REPORT

APPLICATION FOR PERMIT TO DRILL, RE-ENTER, DEEPEN, PLUGBACK, OR ADD A ZONE

Operator Name and Address Reliance Energy, Inc. P. O. Box 10946 Midland, Texas 79702						OGRID Number 149441			
Property Code 25901						API Number 30 - 005-63357			
Property Name Willow Spring "34" State						Well No. 2			
Surface Location									
UL or lot no.	Section	Township	Range	Lot Idn	Feet from the	North/South line	Feet from the	East/West line	County
B	34	4S	25E		660	North	1980	East	Chaves
Proposed Bottom Hole Location If Different From Surface									
UL or lot no.	Section	Township	Range	Lot Idn	Feet from the	North/South line	Feet from the	East/West line	County
Proposed Pool 1 Pecos Slope Abo.									
Proposed Pool 2									

Work Type Code N	Well Type Code G	Cable Rotary R	Lease Type Code S	Ground Level Elevation 3775
Multiple N	Proposed Depth 4100	Formation Abo	Contractor Can-Tex	Spud Date March 20, 2001

Proposed Casing and Cement Program					
Hole Size	Casing Size	Casing weight/foot	Setting Depth	Sacks of Cement	Estimated TOC
14-3/4"	11-3/4"	42#	950'	350	surface
11"	8-5/8"	24#	1950'	350	tie-back
7-7/8"	5-1/2"	15.5#	4100'	350	3000'

Describe the proposed program. If this application is to DEEPEN or PLUG BACK, give the data on the present productive zone and proposed new productive zone.

Describe the blowout prevention program, if any. Use additional sheets if necessary.

Approximately 950' surface casing will be set and cemented to shut off gravel.
11" hole will be air drilled with intermediate casing set at 1950'. 7-7/8"
hole will be air drilled to TD @ 4100'. Production casing will be set at TD
and cemented. The Abo will be stimulated as needed.

BOP Program: 3000' psi blowout preventor will be installed on 8-5/8"; rotating
head used will air drilling.

I hereby certify that the information given above is true and complete to the best of my knowledge and belief.		OIL CONSERVATION DIVISION	
Signature: <u>Clyde C. Wheeler</u>		Approved by: ORIGINAL SIGNED BY TIM W. CUM	
Printed name: Clyde C. Wheeler		DISTRICT II SUPERVISOR	
Title: Petroleum Engineer		Title:	
Date: March 14, 2001		Approval Date: MAR 22 2001	
Phone: (915) 683-4816		Expiration Date: MAR 22 2002	
Conditions of Approval:		Attached <input type="checkbox"/>	

NOTIFY OCD SPUD & TIME TO WITNESS
WATER PROTECTION STRING

DISTRICT I
P. O. Box 1980
Hobbs, NM 88241-1980

State of New Mexico
Energy, Minerals, and Natural Resources Department

Form C-102
Revised 02-10-94

Instructions on back

DISTRICT II
P. O. Drawer DD
Artesia, NM 88211-0719

OIL CONSERVATION DIVISION

P. O. Box 2088
Santa Fe, New Mexico 87504-2088

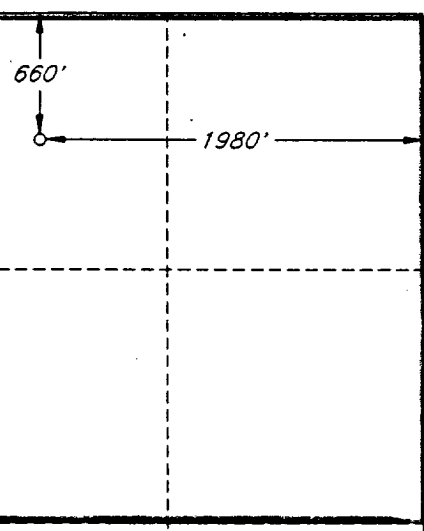
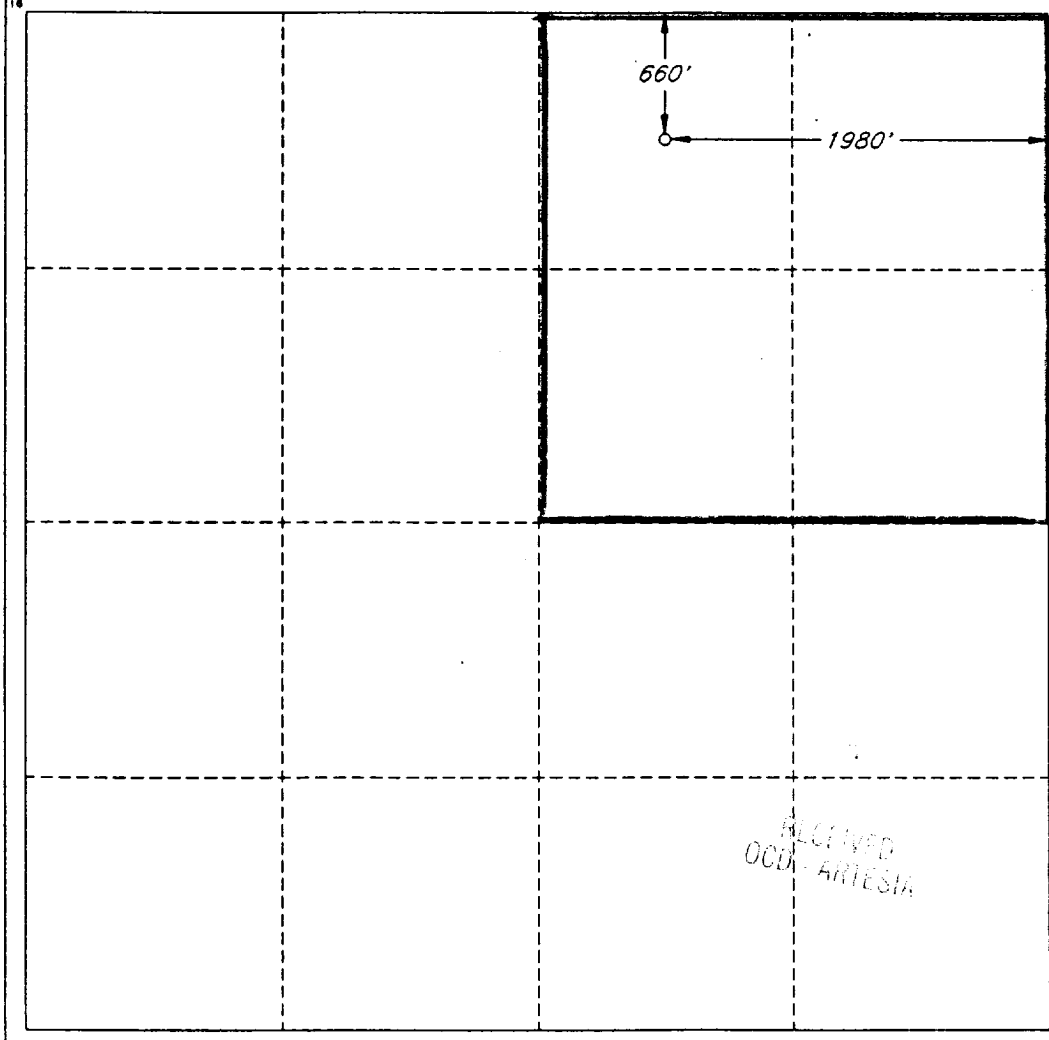
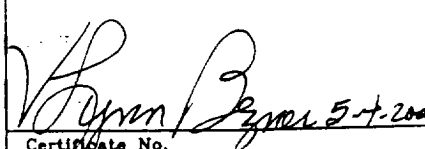
Submit to the Appropriate
District Office
State Lease - 4 copies
Fee Lease - 3 copies

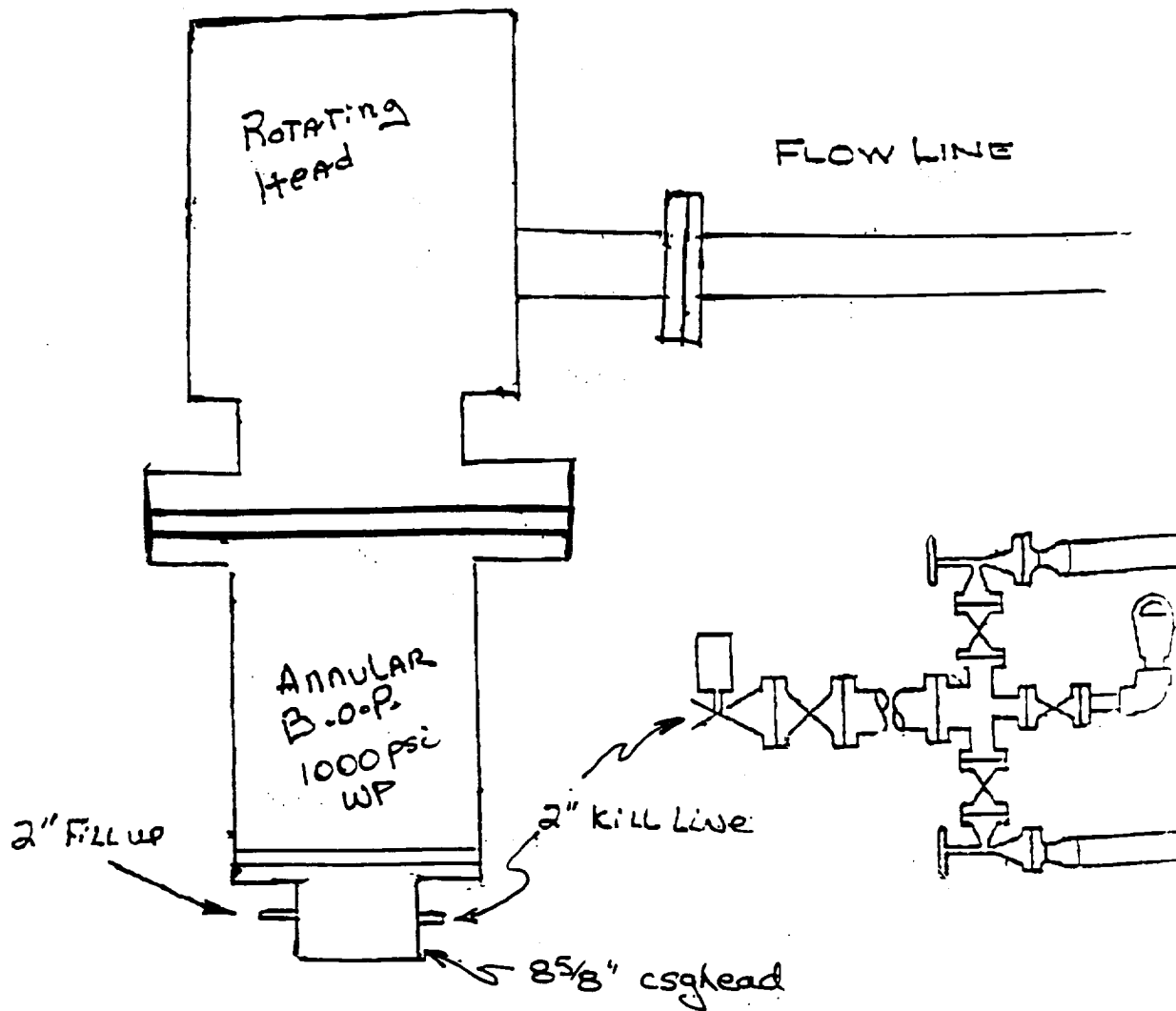
DISTRICT III
1000 Rio Brazos Rd.
Aztec, NM 87410

☐ AMENDED REPORT

DISTRICT IV
P. O. Box 2088
Santa Fe, NM 87507-2088

WELL LOCATION AND ACREAGE DEDICATION PLAT

1 API Number		2 Pool Code		3 Pool Name Pecos Slope Abo					
4 Property Code		5 Property Name WILLOW SPRING '34' STATE						6 Well Number 2	
7 GRID No.		8 Operator Name RELIANCE ENERGY INCORPORATED						9 Elevation 3775'	
10 SURFACE LOCATION									
UL or lot no. B	Section 34	Township 4 SOUTH	Range 25 EAST, N.M.P.M.	Lot Ida	Feet from the 660'	North/South line NORTH	Feet from the 1980'	East/West line EAST	County CHAVES
"BOTTOM HOLE LOCATION IF DIFFERENT FROM SURFACE									
UL or lot no.	Section	Township	Range	Lot Ida	Feet from the	North/South line	Feet from the	East/West line	County
12 Dedicated Acres 160.0		13 Joint or Infill N		14 Consolidation Code		15 Order No.			
NO ALLOWABLE WELL BE ASSIGNED TO THIS COMPLETION UNTIL ALL INTERESTS HAVE BEEN CONSOLIDATED OR A NON-STANDARD UNIT HAS BEEN APPROVED BY THE DIVISION									
						OPERATOR CERTIFICATION I hereby certify that the information contained herein is true and complete to the best of my knowledge and belief.			
						Signature Clyde C. Wheeler Printed Name CLYDE C. WHEELER Title Petroleum Engineer Date 6-5-00			
						SURVEYOR CERTIFICATION I hereby certify that the well location shown on this plat was plotted from field notes of actual surveys made by me or under my supervision, and that the same is true and correct to the best of my belief.			
						Date of Survey MAY 3, 2000 Signature and Seal of Professional Surveyor  Certificate No. V. L. BEZNER R.P.S. #7920 JOB #68948 / 200 NE / V.H.B.			



RECEIVED
OCD ARTESIA

Reliance Energy, Inc.
Willow Spring "34" State No. 2
Chaves County, NM.

CCW 5/15/00