

General Purpose Worksheet



Subject	Run CIBP T+A G-19	Page No.	Of
File		By	Date 10-5-89

UNIT LETTER J 1650' FSL 1650' FEL
 Sec 36 T 17S R 27E

TD 5970' Depths: 5749-5793'
 PBD 5929 Model FAB-1 Retriever Production
 PACKER SET @ 5696'

CIBP Run As Follows BTT:

(6 Subs)

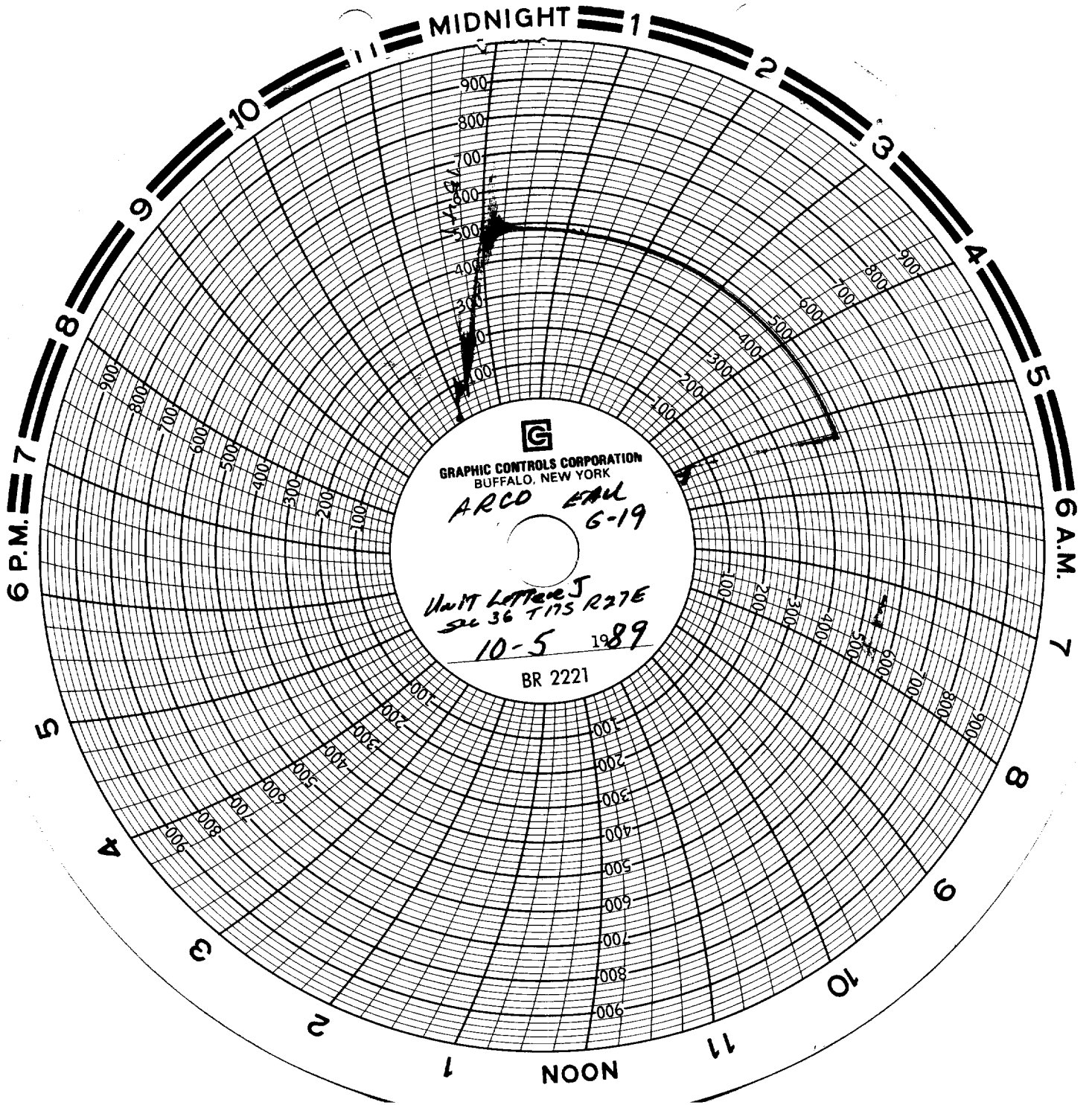
1-M-H Hyd Set CIBP	1.85
183-2 3/8" EUE 8 1/4 Tbg.	5654.65
2-2 3/8" EUE 8 1/4 Tbg Subs.	12.30
	<hr/>
	5668.80
RKB	11.00
	<hr/>
	5679.80

CIBP Set @ 5679.80' Circulate Well
 with 110 barrels 8.6# Brine @ WT 675
 Chemical TEST CIBP To 500# For 20
 minutes. cut chart. Hold Press O.K.

RECEIVED

NOV 9- '89

O. C. D.
 ARTESIA, OFFICE



GRAPHIC CONTROLS CORPORATION
BUFFALO, NEW YORK

ARCO EARL 6-19

Unit Letter J
SU 36 T175 R27E

10-5 1989

BR 2221

ARTESIA, OFFICE

O. C. D.

NOV 9-89

RECEIVED