

NO. OF COPIES RECEIVED	6
DISTRIBUTION	
SANTA FE	1
FILE	1
U.S.G.S.	2
LAND OFFICE	1
OPERATOR	1

RECEIVED
NEW MEXICO OIL CONSERVATION COMMISSION

30-015-22828
Form C-101
Revised 1-1-65

FEB 9 1979

O. C. C.
ARTESIA, OFFICE

5A. Indicate Type of Lease
STATE FEE

6. State Oil & Gas Lease No.
B-1969

APPLICATION FOR PERMIT TO DRILL, DEEPEN, OR PLUG BACK

1a. Type of Work
DRILL DEEPEN PLUG BACK

b. Type of Well
OIL WELL GAS WELL OTHER
SINGLE ZONE MULTIPLE ZONE

2. Drilling Operator
Collier & Collier

3. Address of Operator
P.O. Box 798, Artesia, New Mexico 88210

4. Location of Well
UNIT LETTER 0 LOCATED 990' FEET FROM THE South LINE
AND 1650' FEET FROM THE East LINE OF SEC. 22 TWP. 17S RGE. 28E NMPM

7. Unit Agreement Name

8. Farm or Lease Name
State B 1969 Tr. 1

9. Well No.
12

10. Field and Pool, or Wildcat
East Empire Yates 7-R

17. County
Eddy

19. Proposed Depth 800'	19A. Formation Seven Rivers	20. Rotary or C.T. Rotary
21. Elevations (Show whether DT, RT, etc.) 3592.7	21A. Kind & Status Plug. Bond Statewide	21B. Drilling Contractor Yucca Drilling Company
		22. Approx. Date Work will start February 14, 1979

23. PROPOSED CASING AND CEMENT PROGRAM

SIZE OF HOLE	SIZE OF CASING	WEIGHT PER FOOT	SETTING DEPTH	SACKS OF CEMENT	EST. TOP
7 7/8"	4 1/2"	9 1/2#	800'	250 Sxs.	Surface

February 14, 1979
Plan to drill Seven Rivers Well using 7 7/8" bit and reach T-D. approx. 800' using air rig.

February 15, 1979
Plan to run 800' of 4 1/2", 9 1/2# casing and circulate with 250 Sxs. Class "C" to surface.

APPROVAL VALID
FOR 90 DAYS UNLESS
DRILLING COMMENCED,

EXPIRES 5-17-79

IN ABOVE SPACE DESCRIBE PROPOSED PROGRAM; IF PROPOSAL IS TO DEEPEN OR PLUG BACK, GIVE DATA ON PRESENT PRODUCTIVE ZONE AND PROPOSED NEW PRODUCTIVE ZONE. GIVE BLOWOUT PREVENTER PROGRAM, IF ANY.

I hereby certify that the information above is true and complete to the best of my knowledge and belief.

Signed [Signature] Title Agent Date 2/8/79

(This space for State Use)

APPROVED BY [Signature] TITLE SUPERVISOR, DISTRICT II DATE FEB 12 1979

CONDITIONS OF APPROVAL, IF ANY:

Cement must be circulated to
surface behind 4 1/2" casing

Notify N.M.O.C.C. in sufficient
time to allow cementing
the 4 1/2" casing

NEW MEXICO OIL CONSERVATION COMMISSION
WELL LOCATION AND ACREAGE DEDICATION PLAT

Form C-102
Supersedes C-128
Effective 1-1-65

All distances must be from the outer boundaries of the Section.

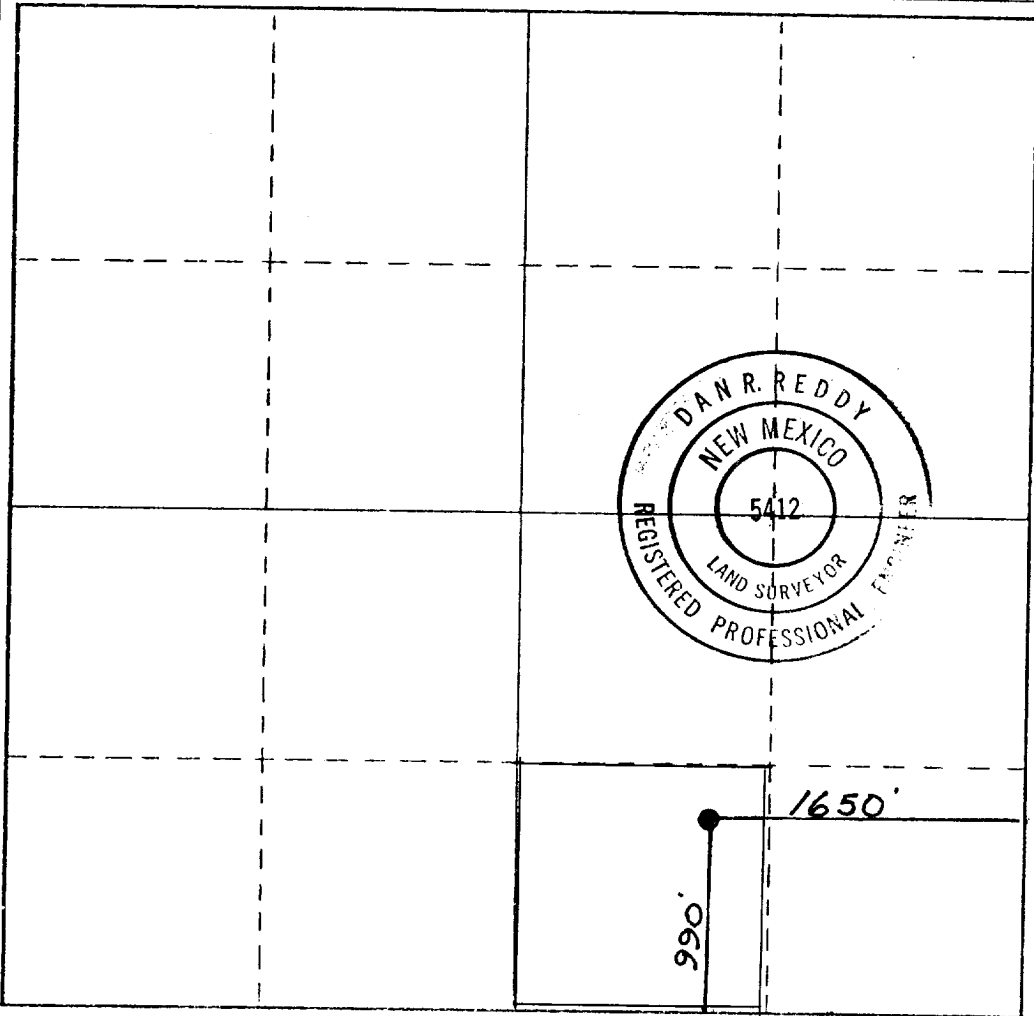
Operator Collier & Collier			Lease State B 1979 Tr. 1		Well No. 12
Unit Letter 0	Section 22	Township 17 South	Range 28 East	County Eddy	
Actual Footage Location of Well: 990 feet from the South line and 1650 feet from the East line					
Ground Level Elev. 3592.7	Producing Formation East Empire Yates 7-R		Pool East Empire 1650 Seven Rivers	Dedicated Acreage: 40 Acres	

1. Outline the acreage dedicated to the subject well by colored pencil or hachure marks on the plat below.
2. If more than one lease is dedicated to the well, outline each and identify the ownership thereof (both as to working interest and royalty).
3. If more than one lease of different ownership is dedicated to the well, have the interests of all owners been consolidated by communitization, unitization, force-pooling, etc?

Yes No If answer is "yes," type of consolidation _____

If answer is "no," list the owners and tract descriptions which have actually been consolidated. (Use reverse side of this form if necessary.) _____

No allowable will be assigned to the well until all interests have been consolidated (by communitization, unitization, forced-pooling, or otherwise) or until a non-standard unit, eliminating such interests, has been approved by the Commission.



CERTIFICATION

I hereby certify that the information contained herein is true and complete to the best of my knowledge and belief.

Mario Siquentes

Name	Agent
Position	Collier & Collier
Company	2/8/79
Date	

I hereby certify that the well location shown on this plat was plotted from field notes of actual surveys made by me or under my supervision, and that the same is true and correct to the best of my knowledge and belief.

Date Surveyed	Jan. 26, 1979
Registered Professional Engineer and/or Land Surveyor	<i>Dan R. Reddy</i>
Certificate No.	NM PE&LS #5412

