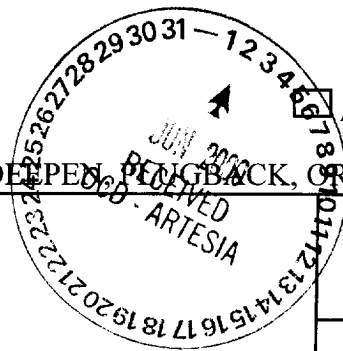


District I  
 PO Box 1980, Hobbs, NM 88241-1980  
 District II  
 811 South First, Artesia, NM 88210  
 District III  
 1000 Rio Brazos Rd., Aztec, NM 87410  
 District IV  
 2040 South Pacheco, Santa Fe, NM 87505

State of New Mexico  
 Energy, Minerals & Natural Resources Department

Form C-101  
 Revised October 18, 1994  
 Instructions on back  
 Submit to Appropriate District Office  
 State Lease - 6 Copies  
 Fee Lease - 5 Copies

OIL CONSERVATION DIVISION  
 2040 South Pacheco  
 Santa Fe, NM 87505



CISF  
 BLM  
 St+kd  
 QP

AMENDED REPORT

APPLICATION FOR PERMIT TO DRILL, RE-ENTER, DEEPEN, PLUG BACK, OR ADD A ZONE

<sup>1</sup> Operator Name and Address: Louis Dreyfus Natural Gas Corporation 14000 Quail Springs Parkway, Suite 600 Oklahoma City, OK 73134	<sup>2</sup> OGRID Number 025773
	<sup>3</sup> API Number 30-0 (S-31173)

<sup>4</sup> Property Code <b>26002</b>	<sup>5</sup> Property Name Geronimo "27" State	<sup>6</sup> Well No. 1
--	---	----------------------------

<sup>7</sup> Surface Location

UL or lot no.	Section	Township	Range	Lot Idn	Feet from the	North/South line	Feet from the	East/West line	County
O	27	17S	28E		700	South	1850	East	Eddy

<sup>8</sup> Proposed Bottom Hole Location If Different From Surface

UL or lot no.	Section	Township	Range	Lot Idn	Feet from the	North/South line	Feet from the	East/West line	County

<sup>9</sup> Proposed Pool 1 Empire Morrow South	<sup>10</sup> Proposed Pool 2
---	-------------------------------

<sup>11</sup> Work Type Code N	<sup>12</sup> Well Type Code G	<sup>13</sup> Cable/Rotary R	<sup>14</sup> Lease Type Code S	<sup>15</sup> Ground Level Elevation 3668'
<sup>16</sup> Multiple N	<sup>17</sup> Proposed Depth 10,900'	<sup>18</sup> Formation Morrow	<sup>19</sup> Contractor Patterson	<sup>20</sup> Spud Date 6/20/00

Minimum WOC time | 8 hrs. <sup>21</sup> Proposed Casing and Cement Program

Hole Size	Casing Size	Casing weight/foot	Setting Depth	Sacks of Cement	Estimated TOC
17 1/2"	13 3/8"	54.5#	425'	450 sks	Surface
12 1/4"	9 5/8"	36#	2,700'	900 sks	Surface
8 3/4"	5 1/2"	17#	10,900'	2500 sks	Tie back to 9 5/8"

<sup>22</sup> Describe the proposed program. If this application is to DEEPEN or PLUG BACK give the data on the present productive zone and proposed new productive zone. Describe the blowout prevention program, if any. Use additional sheets if necessary.

1. Drill 17 1/2" hole to ± 425'. Run 13 3/8" csg. and cement to surface w/450 sks. cement.
2. Drill 12 1/4" hole to ± 2,700'. Set 9 5/8" csg. and cement to surface w/900 sks cement.
3. Drill 8 3/4" hole to ± 10,900'. Run 5 1/2" csg. and cement to 9 5/8" w/2500 sks cement.

See attached "Exhibit 6" for BOP assembly.

<sup>23</sup> I hereby certify that the information given above is true and complete to the best of my knowledge and belief. Signature: <u>Carla Christian</u>	OIL CONSERVATION DIVISION	
Printed name: Carla Christian	Approved by: <b>ORIGINAL SIGNED BY TIM W. CUM</b>	Title: <b>DISTRICT II SUPERVISOR</b>
Title: Regulatory Technician	Approval Date: <b>JUN 02 2000</b>	Expiration Date: <b>JUN 02 2001</b>
Date: 6/01/00	Phone: (405) 749-5263	Conditions of Approval: Attached <input type="checkbox"/>

DISTRICT I  
1826 N. French Dr., Hobbs, NM 88240

DISTRICT II  
811 South First, Artesia, NM 88210

DISTRICT III  
1000 Rio Brazos Rd., Artec, NM 87410

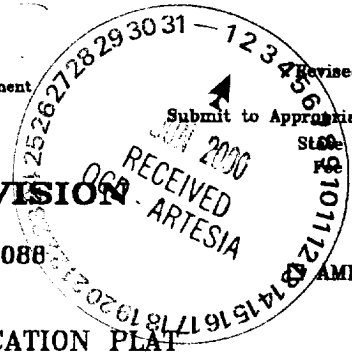
DISTRICT IV  
2040 South Pacheco, Santa Fe, NM 87505

State of New Mexico  
Energy, Minerals and Natural Resources Department

Form C-102  
Revised March 17, 1999

OIL CONSERVATION DIVISION

2040 South Pacheco  
Santa Fe, New Mexico 87504-2088



AMENDED REPORT?

WELL LOCATION AND ACREAGE DEDICATION PLAN

API Number	Pool Code	Pool Name
		Empire Morrow South
Property Code	Property Name	Well Number
	GERONIMO "27" STATE	1
OGRID No.	Operator Name	Elevation
025773	LOUIS DREYFUS NATURAL GAS CORPORATION	3668'

Surface Location

UL or lot No.	Section	Township	Range	Lot Idn	Feet from the	North/South line	Feet from the	East/West line	County
0	27	17 S	28 E		700	SOUTH	1850	EAST	EDDY

Bottom Hole Location If Different From Surface

UL or lot No.	Section	Township	Range	Lot Idn	Feet from the	North/South line	Feet from the	East/West line	County

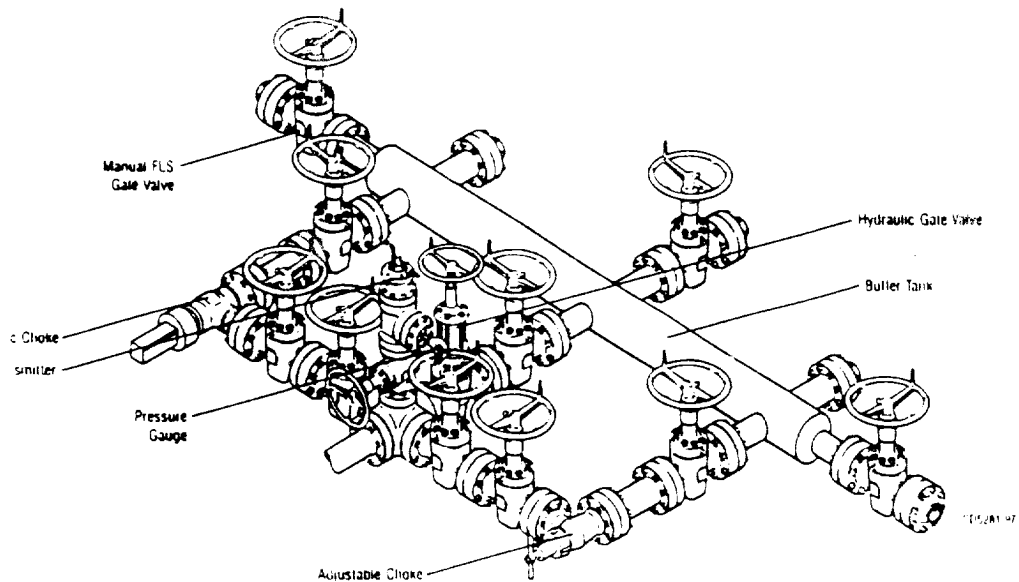
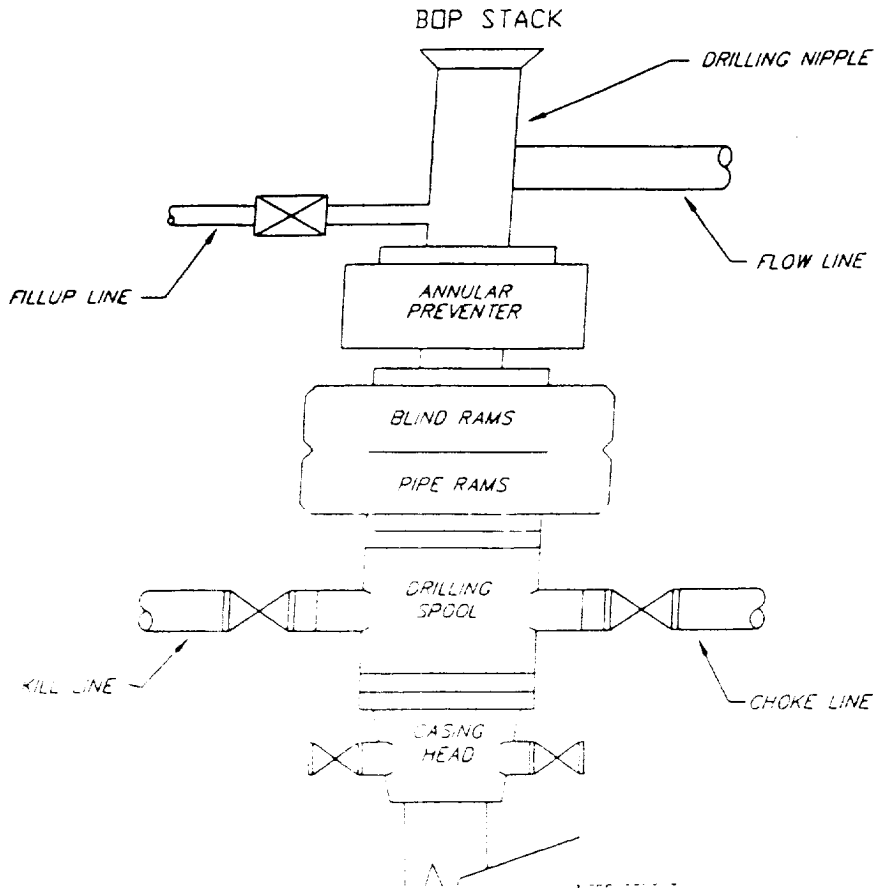
Dedicated Acres	Joint or Infill	Consolidation Code	Order No.
320	N		

NO ALLOWABLE WILL BE ASSIGNED TO THIS COMPLETION UNTIL ALL INTERESTS HAVE BEEN CONSOLIDATED OR A NON-STANDARD UNIT HAS BEEN APPROVED BY THE DIVISION

<div style="border: 1px dashed black; padding: 10px;"> <p>State Lease P. 2071</p> <p>Lat.: N32°48'01.5" Long.: W104°09'42.5"</p> <p>3671.8'    3668.6'</p> <p>3670.6'    3666.4'</p> <p>700'    1850'</p> </div>	<p><b>OPERATOR CERTIFICATION</b></p> <p><i>I hereby certify the the information contained herein is true and complete to the best of my knowledge and belief.</i></p> <p><i>Gene Simer</i> _____ Signature</p> <p>Gene Simer _____ Printed Name</p> <p>Dist. Ops. Mgr. _____ Title</p> <p>05-31-00 _____ Date</p>	
	<p><b>SURVEYOR CERTIFICATION</b></p> <p><i>I hereby certify that the well location shown on this plat was plotted from field notes of actual surveys made by me or under my supervision, and that the same is true and correct to the best of my belief.</i></p> <p>May 26, 2000 _____ Date Surveyed</p> <p>Signature of Gary L. Jones _____ Professional Surveyor</p> <p>7977 _____ No. 0281</p> <p>Certification of Gary L. Jones 7977 _____ Professional Land Surveyor</p>	
	<p>BAK SURVEY</p>	

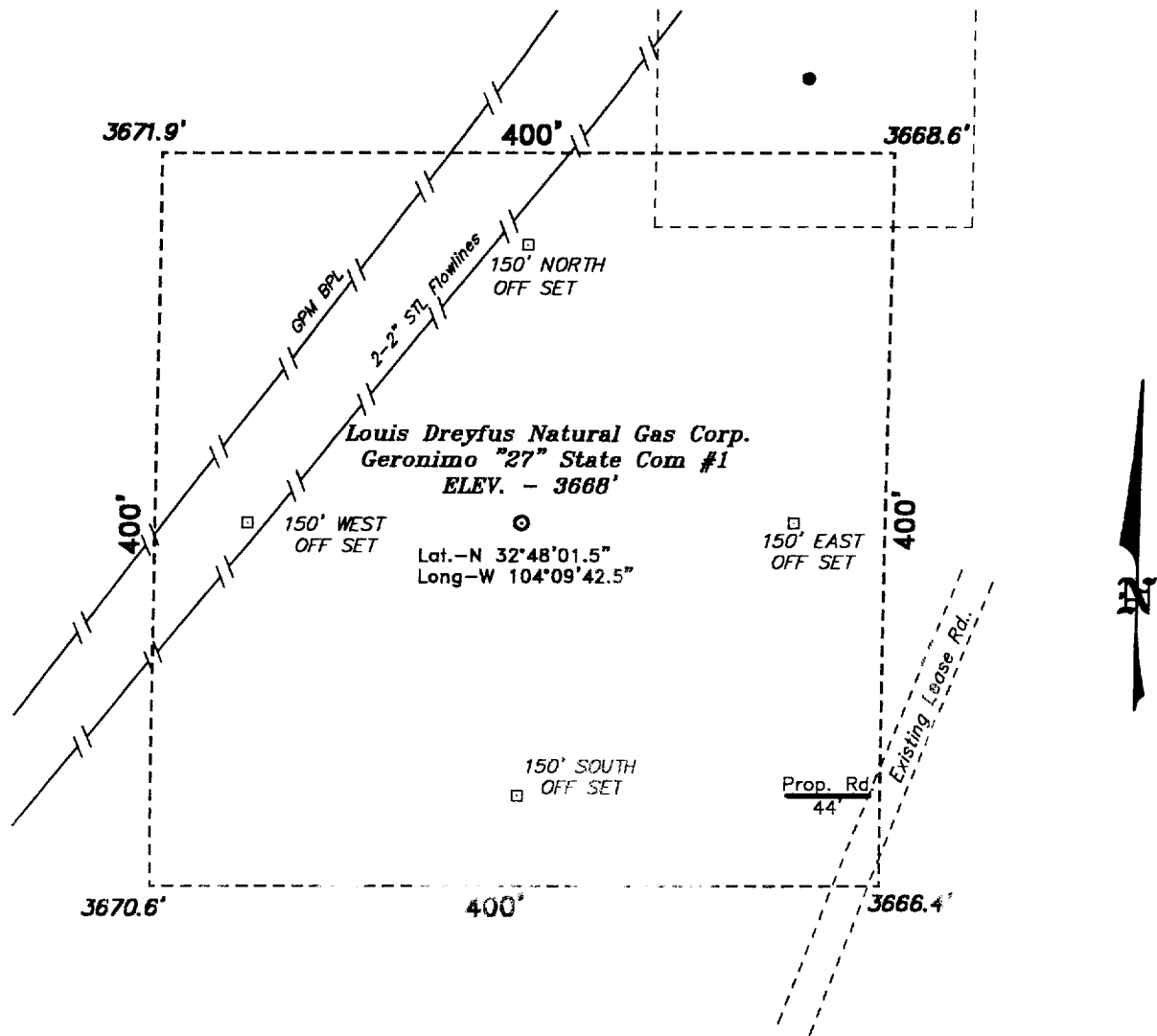
# Exhibit 3

## TYPICAL 5,000 p.s.i. BLOWOUT PREVENTER & CHOKE MANIFOLD SCHEMATIC



Typical Choke Manifold Designed for Land Drilling Applications

**SECTION 27, TOWNSHIP 17 SOUTH, RANGE 28 EAST, N.M.P.M.,  
EDDY COUNTY, NEW MEXICO.**



SCALE: 1" = 100'

Directions to Location:

FROM THE JUNCTION OF US HWY 82 AND STATE HWY 360, GO EAST ON HWY 82 APPROX. 2500 FEET TO A POINT WHICH LIES APPROX. 1600 FEET SOUTH OF THE PROPOSED WELL LOCATION.

**Louis Dreyfus Natural Gas Corp.**

REF: Geronimo "27" State Com #1 / Well Pad Topo

THE GERONIMO "27" STATE COM No. 1 LOCATED 700' FROM THE SOUTH LINE AND 1850' FROM THE EAST LINE OF SECTION 27, TOWNSHIP 17 SOUTH, RANGE 28 EAST, N.M.P.M., EDDY COUNTY, NEW MEXICO.

**BASIN SURVEYS** P.O. BOX 1786-HOBBS, NEW MEXICO

W.O. Number: 0281

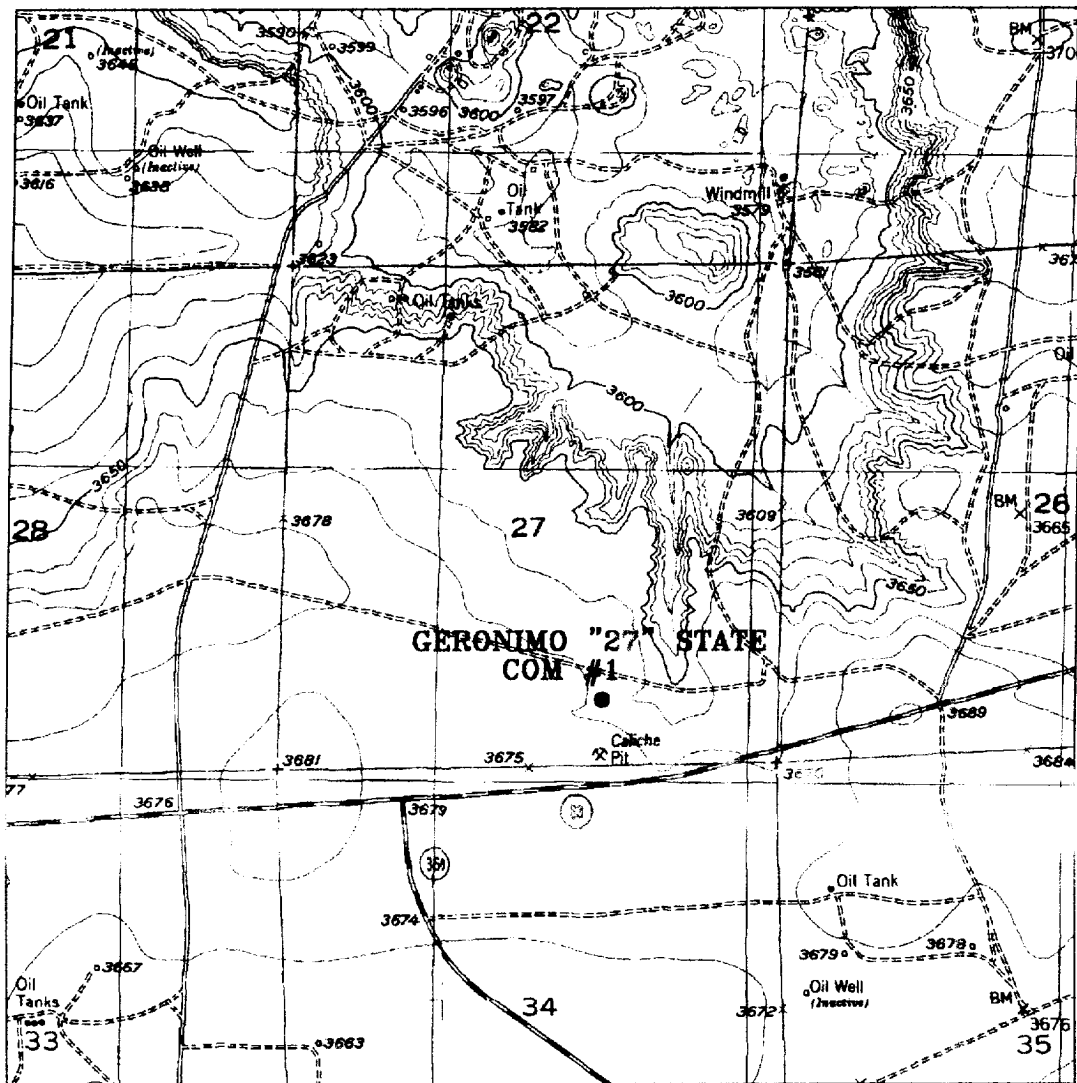
Drawn By: **K. GOAD**

Date: 05-30-2000

Disk: KJG #122 - 0281A.DWG

Survey Date: 05-19-2000

Sheet 1 of 1 Sheets



GERONIMO "27" STATE COM #1  
 Located at 700' FSL and 1850' FEL  
 Section 27, Township 17 South, Range 28 East,  
 N.M.P.M., Eddy County, New Mexico.

**basin**  
**surveys**

focused on excellence  
 in the oilfield

P.O. Box 1786  
 1120 N. West County Rd.  
 Hobbs, New Mexico 88241  
 (505) 393-7316 - Office  
 (505) 392-3074 - Fax  
 basinsurveys.com

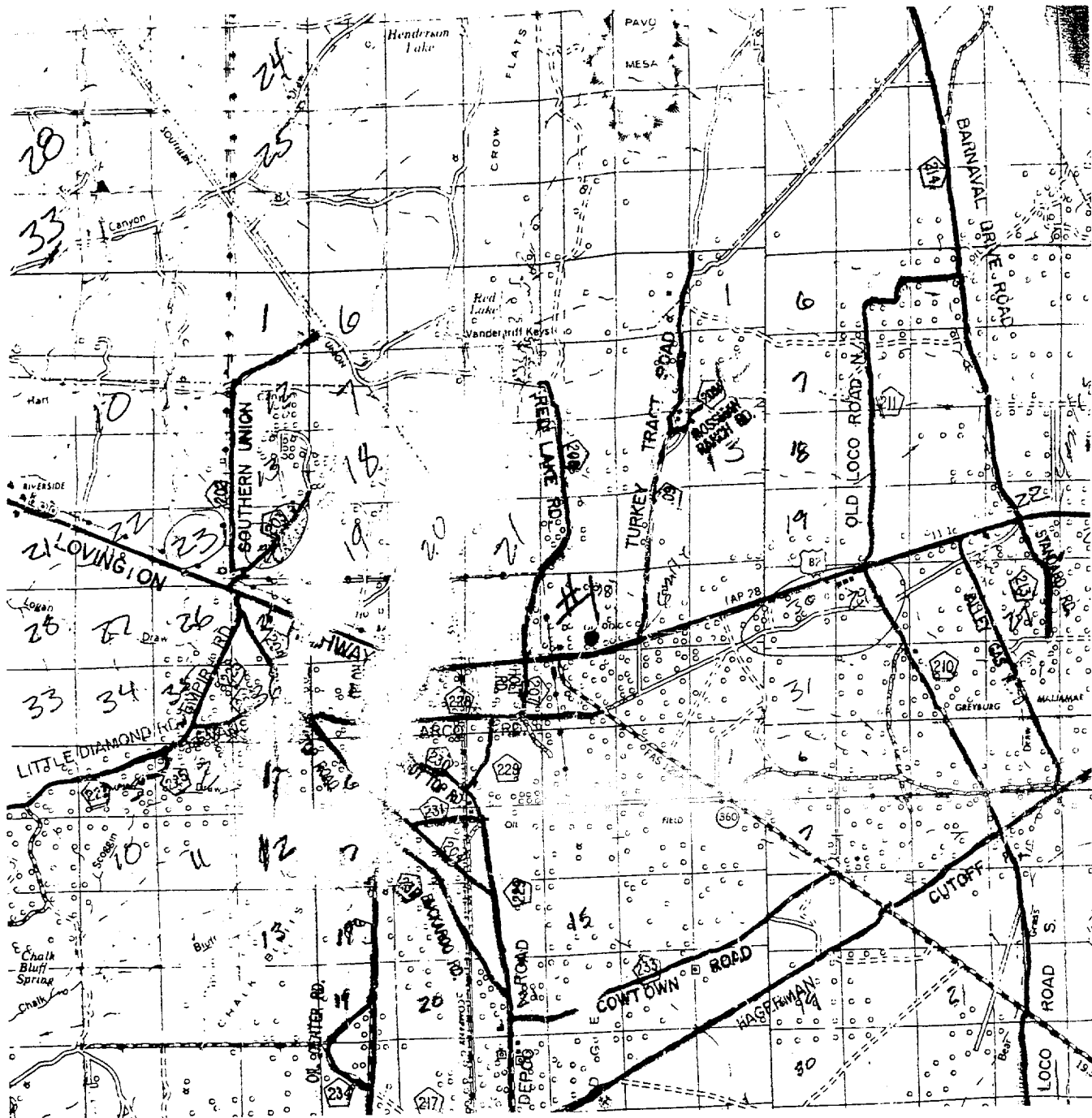
W.O. Number: 0281AA - KJG #122

Survey Date: 05-26-2000

Scale: 1" = 2000'

Date: 05-30-2000

**LOUIS DREYFUS**  
**NATURAL GAS**  
**CORPORATION**



GERONIMO "27" STATE COM #1  
 Located at 700' FSL and 1850' FEL  
 Section 27, Township 17 South, Range 28 East,  
 N.M.P.M., Eddy County, New Mexico.



focused on excellence  
 in the oilfield

P.O. Box 1786  
 1120 N. West County Rd.  
 Hobbs, New Mexico 88241  
 (505) 393-7316 - Office  
 (505) 392-3074 - Fax  
 basinsurveys.com

W.O. Number: 0281AA - KJG #122

Survey Date: 05-26-2000

Scale: 1" = 2 miles

Date: 05-30-2000

LOUIS DREYFUS  
 NATURAL GAS  
 CORPORATION