

CISF  
B/M  
gtd

District I  
PO Box 1980, Hobbs, NM 88241-1980  
District II  
PO Drawer DD, Artesia, NM 88211-0719  
District III  
1000 Rio Brazos Rd., Aztec, NM 87410  
District IV  
PO Box 2088, Santa Fe, NM 87504-2088

State of New Mexico  
Energy, Minerals & Natural Resources Department

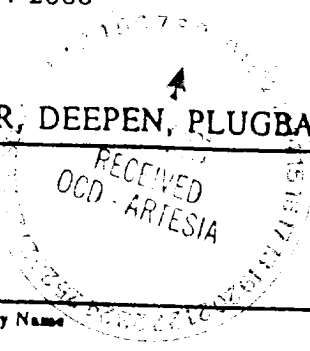
OIL CONSERVATION DIVISION  
PO Box 2088  
Santa Fe, NM 87504-2088

Form C-101  
Revised February 10, 1994  
Instructions on back  
Submit to Appropriate District Office  
State Lease - 6 Copies  
Fed Lease - 5 Copies

AMENDED REPORT

APPLICATION FOR PERMIT TO DRILL, RE-ENTER, DEEPEN, PLUGBACK, OR ADD A ZONE

Operator Name and Address: MURCHISON OIL & GAS, INC. 1100 MIRA VISTA BLVD. PLANO, TX. 75093-4698		GRID Number 015363
Property Code 29051	Property Name BIG CAT STATE COM	API Number 30-015-32091
		Well No. #1



7 Surface Location

UL or lot no.	Section	Township	Range	Lot Ida	Feet from the	North/South line	Feet from the	East/West line	County
G	11	17S	28E		1500	NORTH	1980	EAST	EDDY

8 Proposed Bottom Hole Location If Different From Surface

UL or lot no.	Section	Township	Range	Lot Ida	Feet from the	North/South line	Feet from the	East/West line	County

Proposed Pool 1: *Udes. Empire; Morrow, South*

Proposed Pool 2:

Work Type Code N	Well Type Code G	Cable/Rotary R	Lease Type Code S	Ground Level Elevation 3612
Multiple N	Proposed Depth 10500	Formation MORROW	Contractor PATTERSON	Spud Date 11/15/01

21 Proposed Casing and Cement Program

Hole Size	Casing Size	Casing weight/foot	Setting Depth	Sacks of Cement	Estimated TOC
17 1/2"	13 3/8	61 #/FT	200	420 SXS	SURFACE
12 1/4"	9 5/8	47 #/FT	2200	600 SXS	SURFACE
7 7/8"	5 1/2	17 #/FT	10500	640 SXS	EST TOC 6500
<i>Cement to cover All Oil, Gas &amp; Water bearing zones</i>					

Describe the proposed program. If this application is to DEEPEN or PLUG BACK give the data on the present productive zone and proposed new productive zone. Describe the blowout prevention program, if any. Use additional sheets if necessary.

DRILL, CASE & COMPLETE WELL IN MORROW FORMATION  
BOP'S INCLUDE

- 1) HYDRILL DOUBLE RAM 11" X 3000 PSI
- 2) CHOKE MANIFOLD 4" X 5000 PSI FLANGED CONNECTIONS
- 3) SIX STATION ACCUMULATOR CLOSING UNIT W/ REMOTE CONTROL

I hereby certify that the information given above is true and complete to the best of my knowledge and belief.

Signature: *Michael S. Daugherty*

Printed name: MICHAEL S. DAUGHERTY

Title: VICE PRESIDENT OPERATIONS

Date: 11/8/01

Phone: (972) 931-0700

OIL CONSERVATION DIVISION

Approved by: ORIGINAL SIGNED BY TIM W. GUM  
DISTRICT II SUPERVISOR

Title:

Approval Date: NOV 11 2001 Expiration Date: NOV 11 2002

Conditions of Approval:  
Attached

DISTRICT I  
P.O. Box 1900, Hobbs, NM 88241-1980

State of New Mexico  
Energy, Minerals and Natural Resources Department

Form C-102  
Revised February 10, 1994  
Submit to Appropriate District Office  
State Lease - 4 Copies  
Fee Lease - 3 Copies

DISTRICT II  
P.O. Drawer DD, Artesia, NM 88211-0719

OIL CONSERVATION DIVISION  
P.O. Box 2088

DISTRICT III  
1000 Rio Brazos Rd., Aztec, NM 87410

Santa Fe, New Mexico 87504-2088

DISTRICT IV  
P.O. BOX 2068, SANTA FE, N.M. 87504-2068

AMENDED REPORT

WELL LOCATION AND ACREAGE DEDICATION PLAT

API Number		Pool Code	Pool Name
Property Code	Property Name		Well Number
015363	BIG CAT STATE		1
OGRID No.	Operator Name		Elevation
	MURCHISON OIL & GAS, INC.		3612

Surface Location

UL or lot No.	Section	Township	Range	Lot Idn	Feet from the	North/South line	Feet from the	East/West line	County
G	11	17 S	28 E		1500	NORTH	1980	EAST	EDDY

Bottom Hole Location If Different From Surface

UL or lot No.	Section	Township	Range	Lot Idn	Feet from the	North/South line	Feet from the	East/West line	County

Dedicated Acres	Joint or Infill	Consolidation Code	Order No.
320			

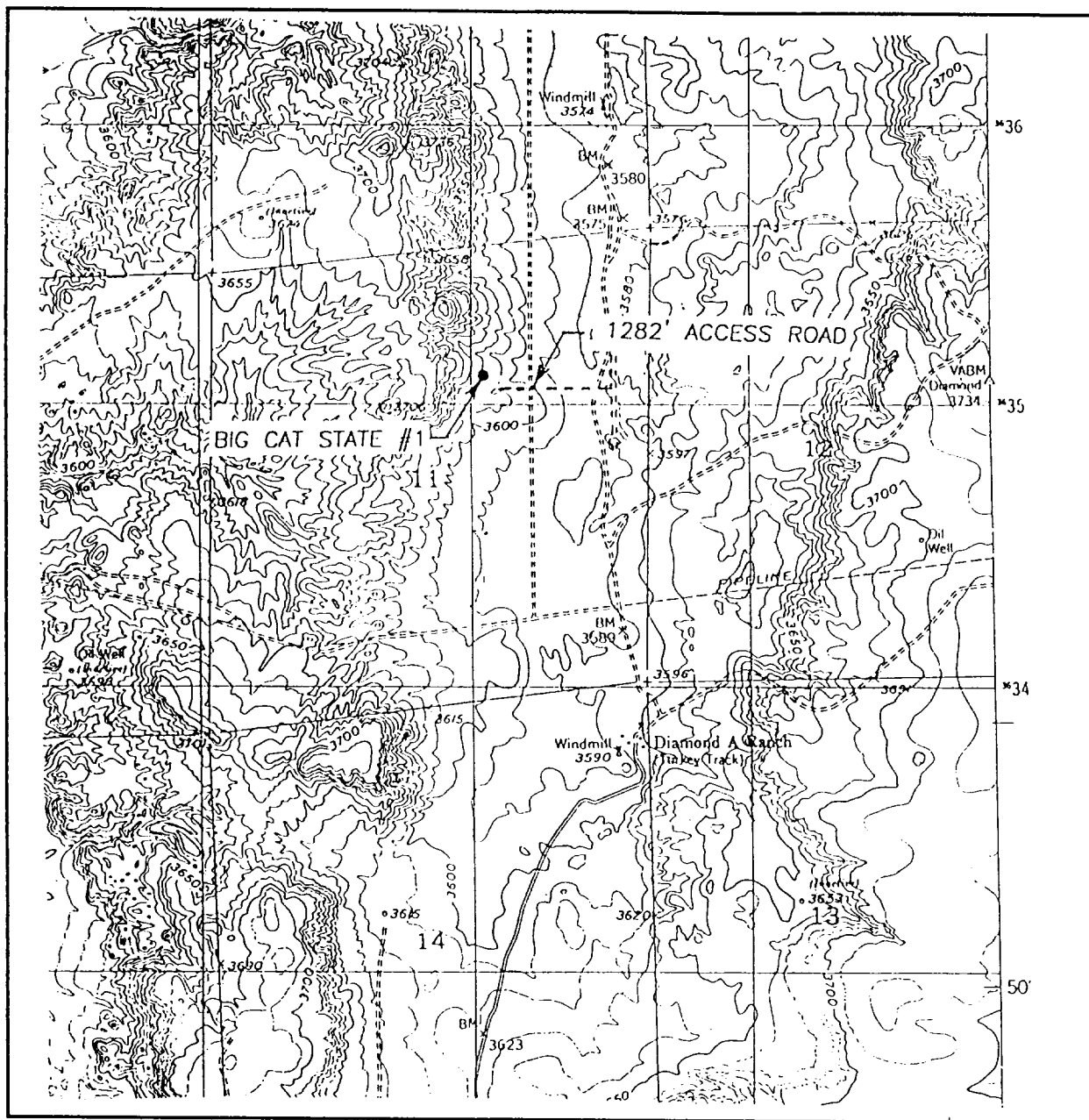
NO ALLOWABLE WILL BE ASSIGNED TO THIS COMPLETION UNTIL ALL INTERESTS HAVE BEEN CONSOLIDATED OR A NON-STANDARD UNIT HAS BEEN APPROVED BY THE DIVISION

	<p>OPERATOR CERTIFICATION</p> <p><i>I hereby certify that the information contained herein is true and complete to the best of my knowledge and belief.</i></p> <p><i>Michael S. Daugherty</i> Signature</p> <p>MICHAEL S. DAUGHERTY Printed Name</p> <p>VICE PRESIDENT OPERATIONS Title</p> <p>11/8/01 Date</p>
	<p>SURVEYOR CERTIFICATION</p> <p><i>I hereby certify that the well location shown on this plat was plotted from field notes of actual surveys made by me or under my supervision and that the same is true and correct to the best of my belief.</i></p> <p>NOVEMBER 6, 2001 Date Surveyed</p> <p>LMP Signature &amp; Seal of Professional Surveyor</p> <p><i>Ronald J. Edson</i> Professional Surveyor</p> <p>01-11-1203 Certificate No. RONALD J. EDSON 3239 GARY EDSON 12641</p>

GEODETIC COORDINATES  
NAD 27 NMEZ  
Y=674067.8  
X=558022.8

LAT = 32°51'10.63" N  
LONG = 104°08'39.81" W

# LOCATION VERIFICATION MAP



SCALE: 1" = 2000'

CONTOUR INTERVAL:  
RED LAKE, N.M. - 10'

SEC. 11 TWP. 17-S RGE. 28-E

SURVEY N.M.P.M.

COUNTY EDDY

DESCRIPTION 1500' FNL & 1980' FEL

ELEVATION 3612

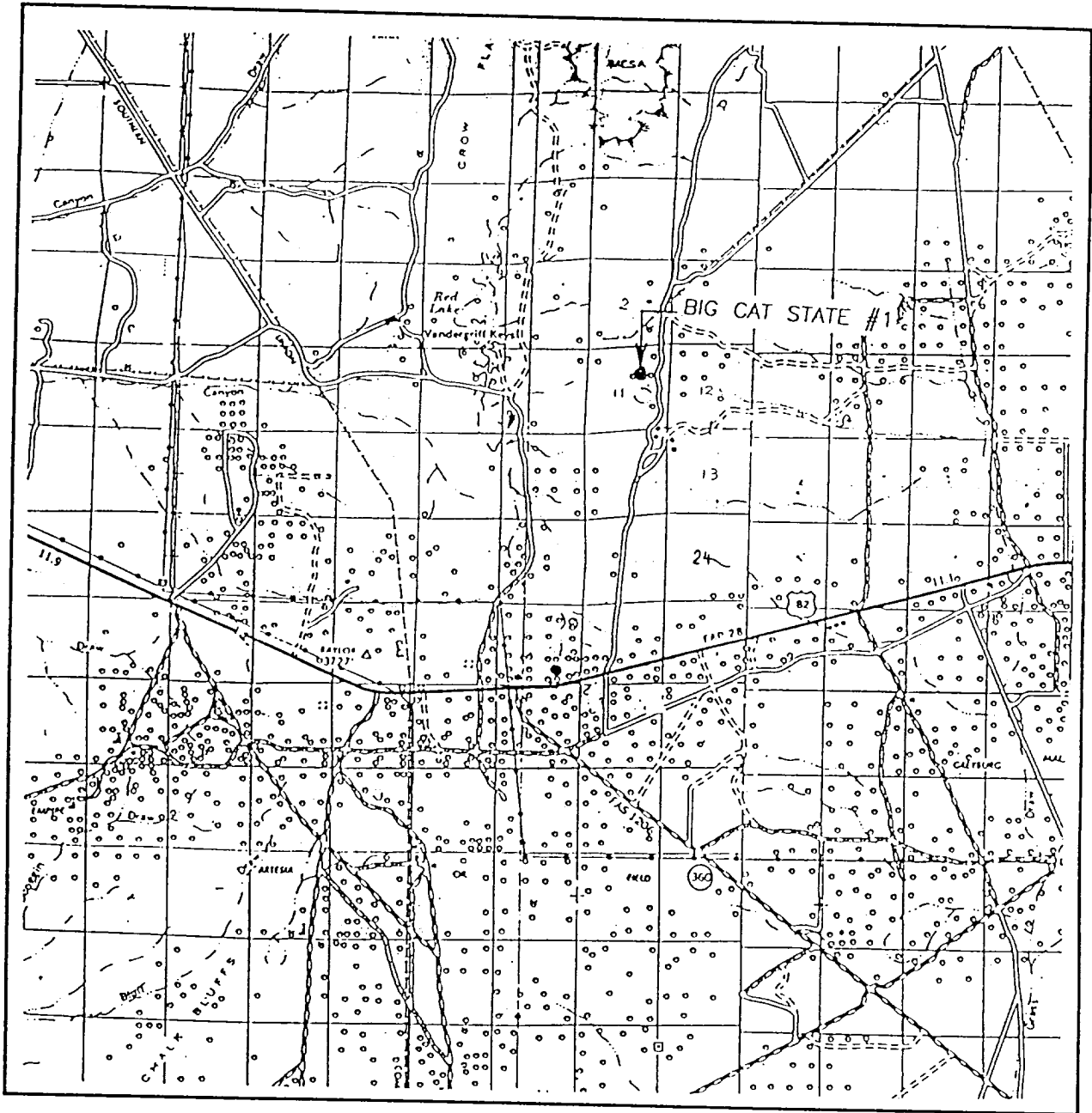
OPERATOR MURCHISON OIL & GAS

LEASE BIG CAT STATE

U.S.G.S. TOPOGRAPHIC MAP  
RED LAKE, N.M.

JOHN WEST SURVEYING  
HOBBS, NEW MEXICO  
(505) 393-3117

# VICINITY MAP



SCALE: 1" = 2 MILES

SEC. 11 TWP. 17-S RGE. 28-E

SURVEY N.M.P.M.

COUNTY EDDY

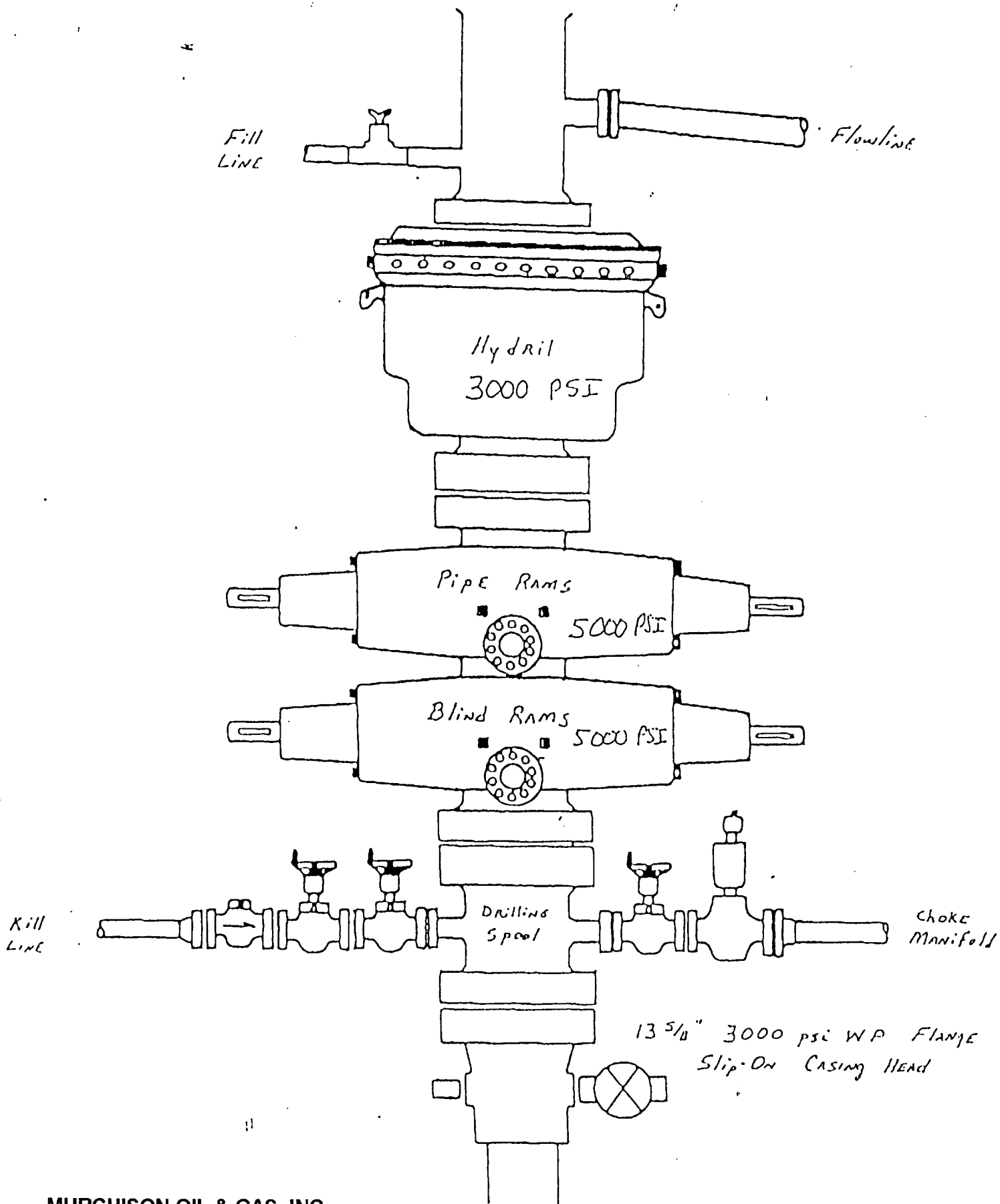
DESCRIPTION 1500' FNL & 1980' FEL

ELEVATION 3612

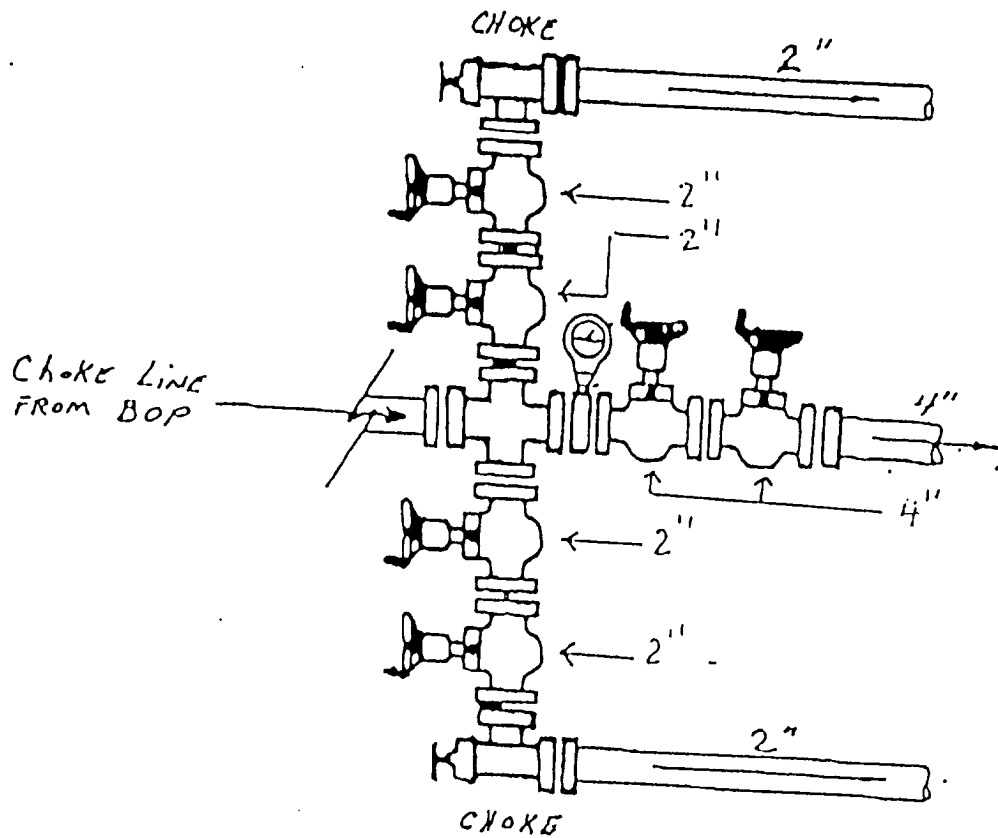
OPERATOR MURCHISON OIL & GAS

LEASE BIC CAT STATE

JOHN WEST SURVEYING  
 HOBBS, NEW MEXICO  
 (505) 393-3117



MURCHISON OIL & GAS, INC.  
 BIG CAT STATE COM #1  
 1500' FNL & 1980' FEL  
 SEC. 11, T17S, R28E  
 EDDY CO., NM.



MURCHISON OIL & GAS, INC.  
 BIG CAT STATE COM #1  
 1500' FNL & 1980' FEL  
 SEC. 11, T17S, R28E  
 EDDY CO., NM.