

RECEIVED  
OCT 18 1953

Company Sacra Bros. OH Cons. Comm.

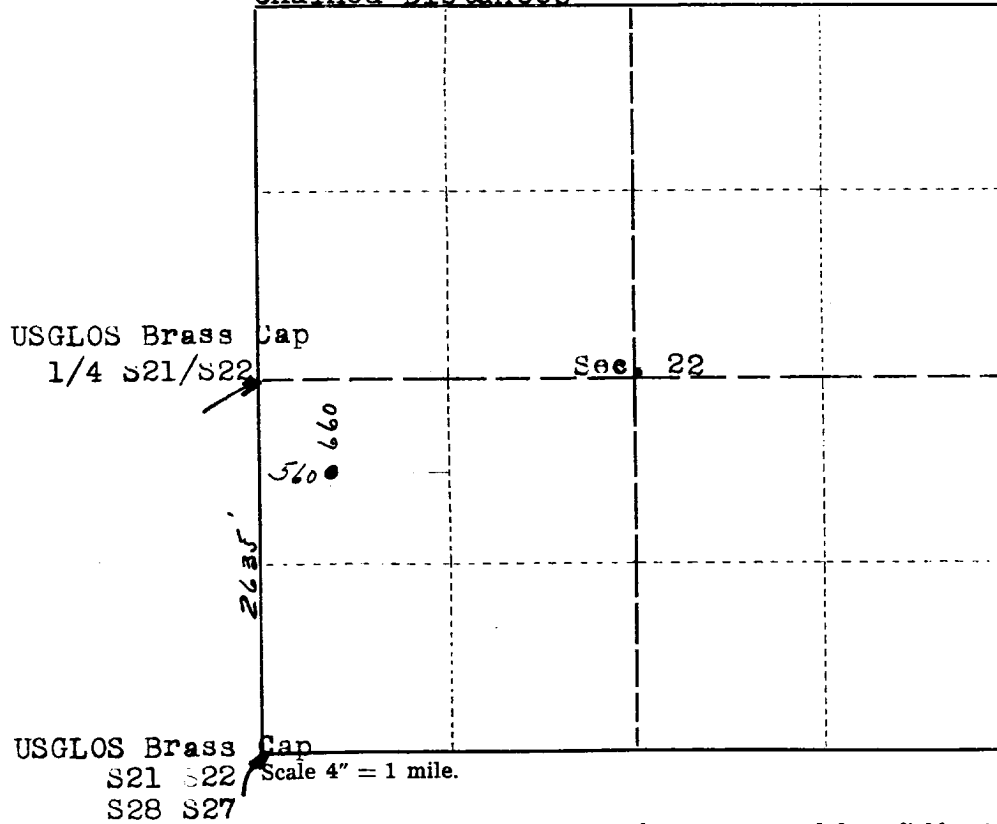
Lease Leonard-State Well No. 3 Artesia Office

Sec. 22 T. 17 S., R. 29 E., N.M.P.M.

Location 560 ft. fr WL & 1975 ft. fr SL

County Eddy New Mexico

Chained Distances



T17S-R29E

This is to certify that the above plat was prepared from field notes of actual surveys made by me or under my supervision and that the same are true and correct to the best of my knowledge and belief.

Seal:

Artesia, New Mexico

*John A. Martin Jr.*  
Registered Professional  
Engineer and Land Surveyor.

Surveyed October 8, 19 53

17532 Advocate Print