

**MEXICO OIL CONSERVATION COMMISSION
WELL LOCATION AND ACREAGE DEDICATION PLAT**

Form C-102
Supersedes C-128
Effective 1-1-65

All distances must be from the outer boundaries of the Section

Operator WINDFOHR OIL COMPANY			Lease JACKSON B		Well No. 28
Unit Letter O	Section 24	Township 17 SOUTH	Range 30 EAST	County EDDY	
Actual Footage Location of Well: 660 feet from the SOUTH line and 1980 feet from the EAST line					
Ground Level Elev. 3637	Producing Formation Grayburg (Premier)		Pool Grayburg Jackson, GB-SA		Dedicated Acreage: 40 Acres <input checked="" type="checkbox"/>

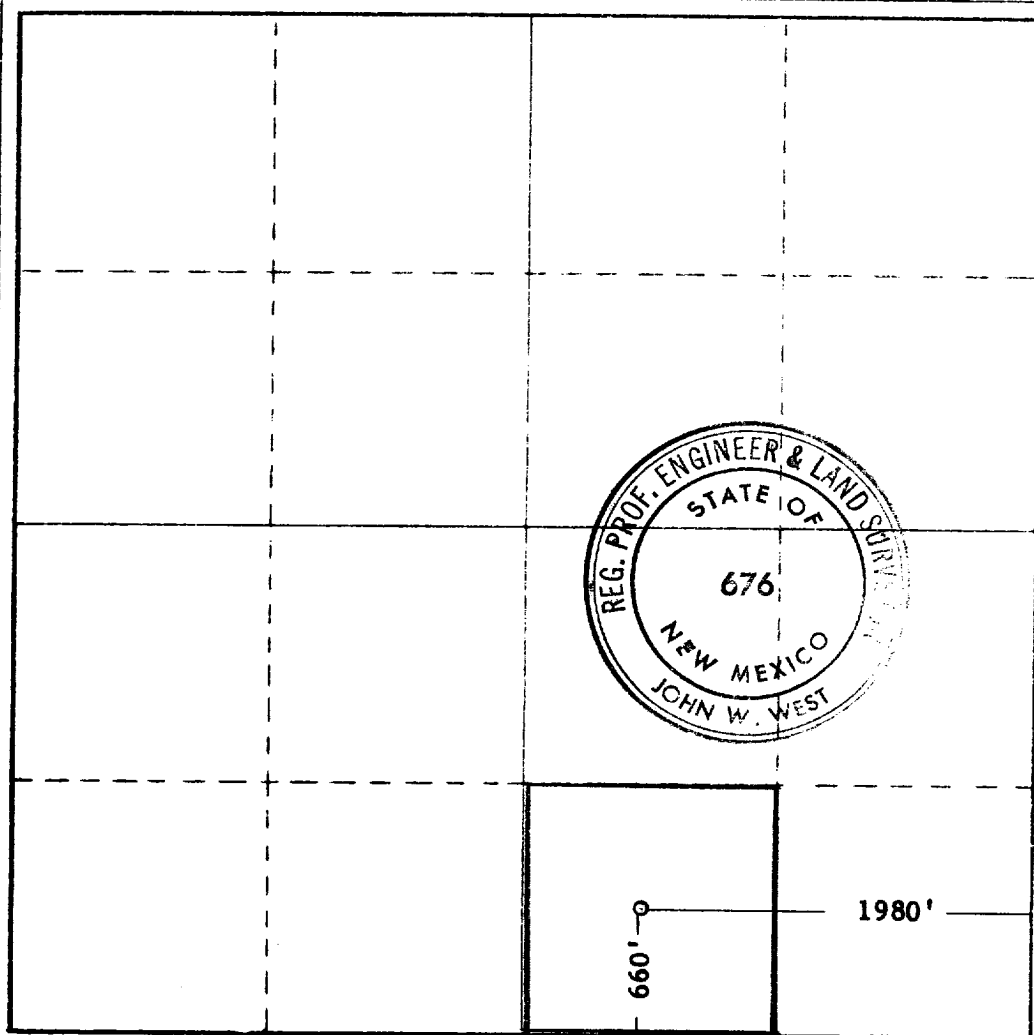
1. Outline the acreage dedicated to the subject well by colored pencil or hatchure marks on the plat below.
2. If more than one lease is dedicated to the well, outline each and identify the ownership thereof (both as to working interest and royalty).
3. If more than one lease of different ownership is dedicated to the well, have the interests of all owners been consolidated by communitization, unitization, force-pooling, etc?

RECEIVED

☐ Yes ☐ No If answer is "yes," type of consolidation DEC 6 1967

If answer is "no," list the owners and tract descriptions which have actually been consolidated. (Use reverse side of this form if necessary.) ARTESIA, OFFICE

No allowable will be assigned to the well until all interests have been consolidated (by communitization, unitization, forced-pooling, or otherwise) or until a non-standard unit, eliminating such interests, has been approved by the Commission.



CERTIFICATION

I hereby certify that the information contained herein is true and complete to the best of my knowledge and belief.

Name Ralph L Gray
Position
Consulting Engineer.

Company
WINDFOHR OIL COMPANY

Date
December 5, 1967

RECEIVED
DEC 5 1967
U.S. GEOLOGICAL SURVEY
ARTESIA, NEW MEXICO

I hereby certify that the well location shown on this plat was plotted from field notes of actual surveys made by me under my supervision, and that same is true and correct to the best of my knowledge and belief.

Date Surveyed
DEC. 1, 1967

Registered Professional Engineer and/or Land Surveyor

John W. West
Certificate No. **676**

