

**MEXICO OIL CONSERVATION COMMISSION
WELL LOCATION AND ACREAGE DEDICATION PLAT**

Form C-102
Supersedes C-128
Effective 1-1-65

Copy to J.

All distances must be from the outer boundaries of the Section.

Operator Windfohr Oil Company ✓			Lease Jackson "B"		Well No. #28
Unit Letter 0	Section 24	Township 17 South	Range 30 East	County Eddy	
Actual Footage Location of Well: 660 feet from the South line and 1980 feet from the East line					
Ground Level Elev: 3637	Producing Formation Seven Rivers		Pool Fren	Dedicated Acreage: 40 Acres	

1. Outline the acreage dedicated to the subject well by colored pencil or hachure marks on the plat below.
2. If more than one lease is dedicated to the well, outline each and identify the ownership thereof (both as to working interest and royalty).
3. If more than one lease of different ownership is dedicated to the well, have the interests of all owners been consolidated by communitization, unitization, force-pooling, etc?

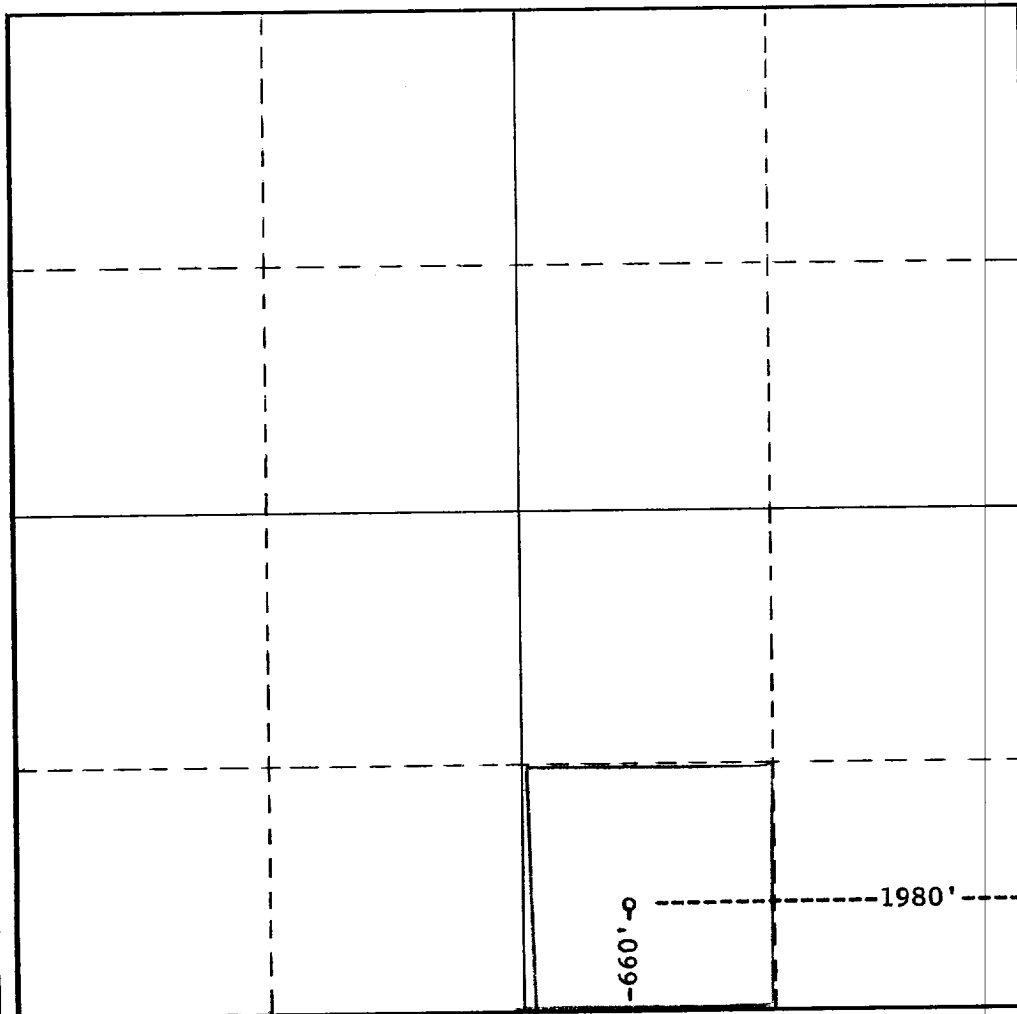
RECEIVED

MAR 19 1968

☐ Yes ☐ No If answer is "yes," type of consolidation _____

If answer is "no," list the owners and tract descriptions which have actually been consolidated (Also reverse side of this form if necessary.) _____

No allowable will be assigned to the well until all interests have been consolidated (by communitization, unitization, forced-pooling, or otherwise) or until a non-standard unit, eliminating such interests, has been approved by the Commission.



CERTIFICATION

I hereby certify that the information contained herein is true and complete to the best of my knowledge and belief.

Name *Raymond L. Gray*
Position **Consulting Engineer.**
Company **WINDFOHR OIL COMPANY**
Date **March 18, 1968**

I hereby certify that the well location shown on this plat was plotted from field notes of actual surveys made by me or under my supervision, and that the same is true and correct to the best of my knowledge and belief.

Date Surveyed **Dec. 1, 1967**
Registered Professional Engineer and/or Land Surveyor

Orig. signed by **John W. West**
Certificate No. _____

