

UNITED STATES
DEPARTMENT OF THE INTERIOR
GEOLOGICAL SURVEY

APPLICATION FOR PERMIT TO DRILL, DEEPEN, OR PLUG BACK

1a. TYPE OF WORK
DRILL ☒ DEEPEN ☐ PLUG BACK ☐

b. TYPE OF WELL
OIL WELL ☒ GAS WELL ☐ OTHER ☐ SINGLE ZONE ☐ MULTIPLE ZONE ☐

2. NAME OF OPERATOR
General American Oil Company of Texas

3. ADDRESS OF OPERATOR
P. O. Box 416 Loco Hills, New Mexico 88255

4. LOCATION OF WELL (Report location clearly and in accordance with any State requirements.)*
At surface
1980' FSL and 600' FWL Sec. 17-T17S, R30E
At proposed prod. zone
660

14. DISTANCE IN MILES AND DIRECTION FROM NEAREST TOWN OR POST OFFICE*
1 1/2 Miles West of Loco Hills, N.M.

15. DISTANCE FROM PROPOSED*
LOCATION TO NEAREST
PROPERTY OR LEASE LINE, FT.
(Also to nearest drlg. unit line, if any) 660'

16. NO. OF ACRES IN LEASE
120

17. NO. OF ACRES ASSIGNED
TO THIS WELL
40

18. DISTANCE FROM PROPOSED LOCATION*
TO NEAREST WELL, DRILLING, COMPLETED, 1320'
OR APPLIED FOR, ON THIS LEASE, FT.

19. PROPOSED DEPTH
3600'

20. ROTARY OR CABLE TOOLS
Rotary

21. ELEVATIONS (Show whether DF, RT, GR, etc.)
3646' G.L.

22. APPROX. DATE WORK WILL START*
April 25, 1972

PROPOSED CASING AND CEMENTING PROGRAM				
SIZE OF HOLE	SIZE OF CASING	WEIGHT PER FOOT	SETTING DEPTH	QUANTITY OF CEMENT
	8-5/8"	20#	450'	100 sacks
	4-1/2"	9.5#	3600'	400 sacks

We Propose to drill this well to approximately 3600' and complete in the Grayburg and San Andres, all zones indicating Porosity will be acidized or sand fraced. Well will be either ~~drilled~~ drilled with air or water. If drilled with air, a control head will be used. If drilled with water and native mud, the hole will be mudded up 100' from TD to clean hole for logging and a 10" 3,000# blowout Preventer will be used.

RECEIVED

APR 21 1972

RECEIVED

APR 18 1972

U. S. GEOLOGICAL SURVEY
ARTESIA, NEW MEXICO

IN ABOVE SPACE DESCRIBE PROPOSED PROGRAM: If proposal is to deepen or plug back, give data on present productive zone and proposed new productive zone. If proposal is to drill or deepen directionally, give pertinent data on subsurface locations and measured and true vertical depths. Give blowout preventer program, if any.

24. ARTESIA, OFFICE

SIGNED J. E. H. Altier TITLE District Superintendent DATE April 17, 1972

(This space for Federal or State office use)

PERMIT NO. _____

APPROVAL DATE _____

DATE _____

APPROVED
APR 20 1972
H. L. BECKMAN
ACTING DISTRICT ENGINEER

THIS APPROVAL IS RESCINDED
IF OPERATIONS
ARE NOT COMMENCED WITHIN 3 MONTHS.
JUL 20 1972
*See Instructions On Reverse Side

NEW MEXICO OIL CONSERVATION COMMISSION
WELL LOCATION AND ACREAGE DEDICATION PLAT

Form C-102
Supersedes C-128
Effective 1-1-65

All distances must be from the outer boundaries of the Section.

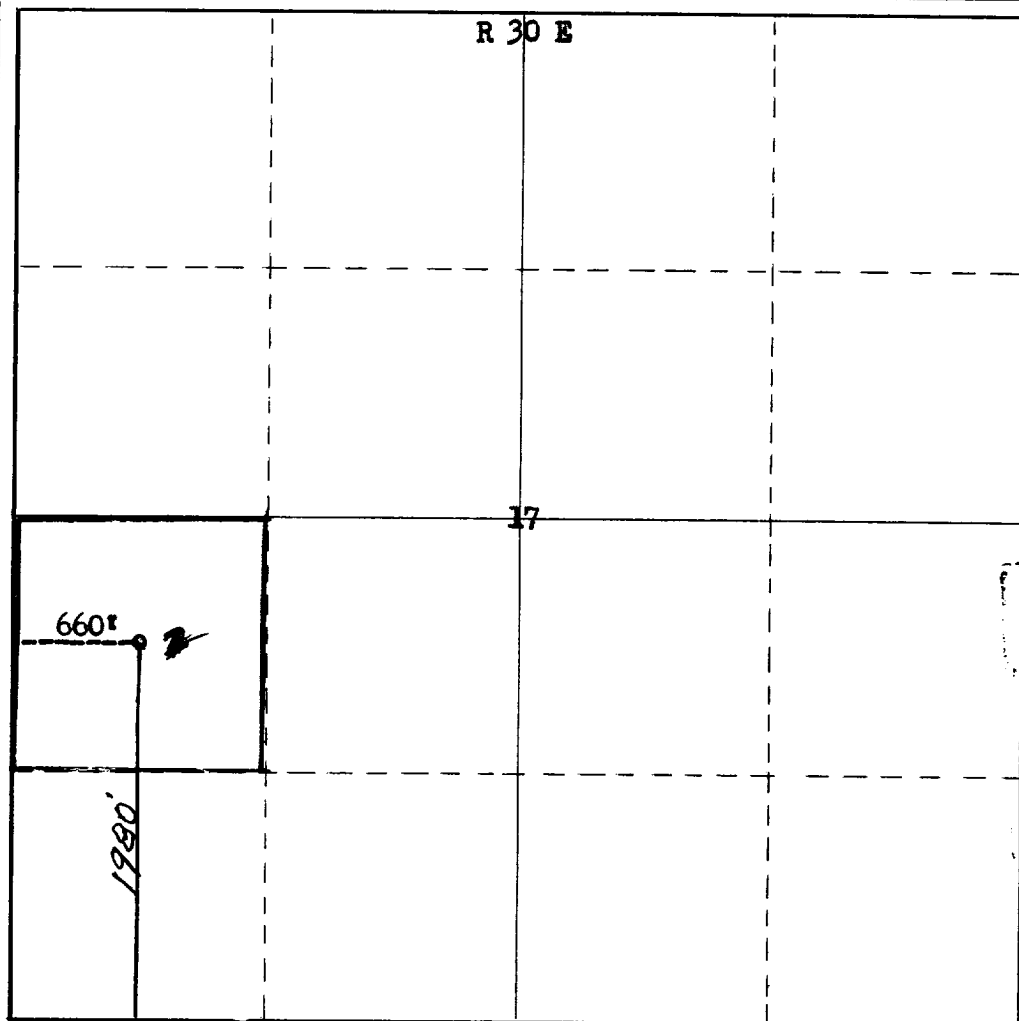
Operator GENERAL AMERICAN OIL COMPANY			Lease McINTYRE		Well No. 2
Unit Letter L	Section 17	Township 17 South	Range 30 East	County Eddy	
Actual Footage Location of Well: 1980 feet from the South line and 660 feet from the West line					
Ground Level Elev. 3646	Producing Formation Grayburg= San Andres		Pool Grayburg-Jackson		Dedicated Acreage: 40 Acres

1. Outline the acreage dedicated to the subject well by colored pencil or hachure marks on the plat below.
2. If more than one lease is dedicated to the well, outline each and identify the ownership thereof (both as to working interest and royalty).
3. If more than one lease of different ownership is dedicated to the well, have the interests of all owners been consolidated by communitization, unitization, force-pooling, etc?

☐ Yes ☐ No If answer is "yes," type of consolidation _____

If answer is "no," list the owners and tract descriptions which have actually been consolidated. (Use reverse side of this form if necessary.) _____

No allowable will be assigned to the well until all interests have been consolidated (by communitization, unitization, forced-pooling, or otherwise) or until a non-standard unit, eliminating such interests, has been approved by the Commission.



CERTIFICATION

I hereby certify that the information contained herein is true and complete to the best of my knowledge and belief.

Name
W. E. Walter
Position
District Superintendent
Company
General American Oil Co.
Date
April 17, 1972

I hereby certify that the location shown on this plat is from field notes made by me or under my supervision and that the same is to the best of my knowledge correct.
RECEIVED
APR 18 1972
U. S. GEOLOGICAL SURVEY
ARTESIA, NEW MEXICO

Date Surveyed
April 14th, 1972
Registered Professional Engineer and/or Land Surveyor

Certificate No. **542**

0 330 660 990 1320 1650 1980 2310 2640 2000 1500 1000 500

RECEIVED

1944

OFFICE OF THE
DIRECTOR OF THE
BUREAU OF THE
CENSUS