

UNITED STATES
DEPARTMENT OF THE INTERIOR
GEOLOGICAL SURVEY

SUBMIT IN TRIPLICATE*

Indicate locations on
reverse sideForm approved
Budget Bureau No. 42-R1425

30-015-21366

1. LEASE DESIGNATION AND SERIAL NO. LC-028793-a		
2. IF INDIAN ALLOTTEE OR TRIBE NAME		
3. UNIT AGREEMENT NAME		
4. FARM OR LEASE NAME Burch "A"		
5. WELL NO. 31		
6. FIELD AND POOL, OR WILDCAT Grayburg-Jackson		
7. SEC. T. R. M. OR BLK. AND SURVEY OR AREA 19 17-S -30-E		
8. COUNTY OR PARISH Eddy		9. STATE New Mexico
10. DISTANCE FROM PROPOSED* LOCATION TO NEAREST PROPERTY OR LEASE LINE, FT. (Also to nearest drlg. unit line, if any)	11. NO. OF ACRES IN LEASE 640	12. NO. OF ACRES ASSIGNED TO THIS WELL 40
13. DISTANCE FROM PROPOSED LOCATION* TO NEAREST WELL, DRILLING COMPLETED, OR APPLIED FOR, ON THIS LEASE, FT.	14. PROPOSED DEPTH 3340	15. ROTARY OR CABLE TOOLS Rotary
16. ELEVATIONS (Show whether DF, RT, GR, etc.) 3612.9		17. APPROX. DATE WORK WILL START* September 13, 1974

PROPOSED CASING AND CEMENTING PROGRAM				
SIZE OF HOLE	SIZE OF CASING	WEIGHT PER FOOT	SETTING DEPTH	QUANTITY OF CEMENT
12-1/4"	8-5/8"	20#	480'	100 sacks
7-7/8"	4-1/2"	9.5#	3340'	300 sacks

We propose to drill this well to 3340' and complete in the Grayburg and San Andres.

All zones indicating porosity will be acidized or fraced.

Mud Program: Water and native mud will be used and approximately 100' from T.D. we will mud up to get hole in shape to log.

A 10" 3,000# blowout preventer will be used in drilling this well.

RECEIVED
AUG 27 1974
U.S. GEOLOGICAL SURVEY
ARTESIA, NEW MEXICO

IN ABOVE SPACE DESCRIBE PROPOSED PROGRAM: If proposal is to deepen or plug back, give data on present productive zone and proposed new productive zone. If proposal is to drill or deepen directionally, give pertinent data on subsurface locations and measured and true vertical depths. Give blowout preventer program, if any.

24.

SIGNED

TITLE District Superintendent

DATE August 26, 1974

(This space for Federal or State office use)

PERMIT NO.

APPROVAL DATE

APPROVED BY

CONDITIONS OF APPROVAL, IF ANY

TITLE

DATE

THIS APPROVAL IS VALID FOR IF OPERATIONS
ARE NOT COMMENCED WITHIN 3 MONTHS.
DEC 12 1974

*See Instructions On Reverse Side

NEW MEXICO OIL CONSERVATION COMMISSION
WELL LOCATION AND ACREAGE DEDICATION PLAT

Form C-102
Supersedes C-128
Effective 1-1-65

All distances must be from the outer boundaries of the Section.

NEW MEXICO OIL CONSERVATION COMMISSION
WELL LOCATION AND ACREAGE DEDICATION PLAT

Form C-102
Supersedes C-128
Effective 1-1-65

**NEW MEXICO OIL CONSERVATION COMMISSION
WELL LOCATION AND ACREAGE DEDICATION PLAT**

Form C-102
Supersedes C-128
Effective 1-1-65

All distances must be from the outer boundaries of the Section.

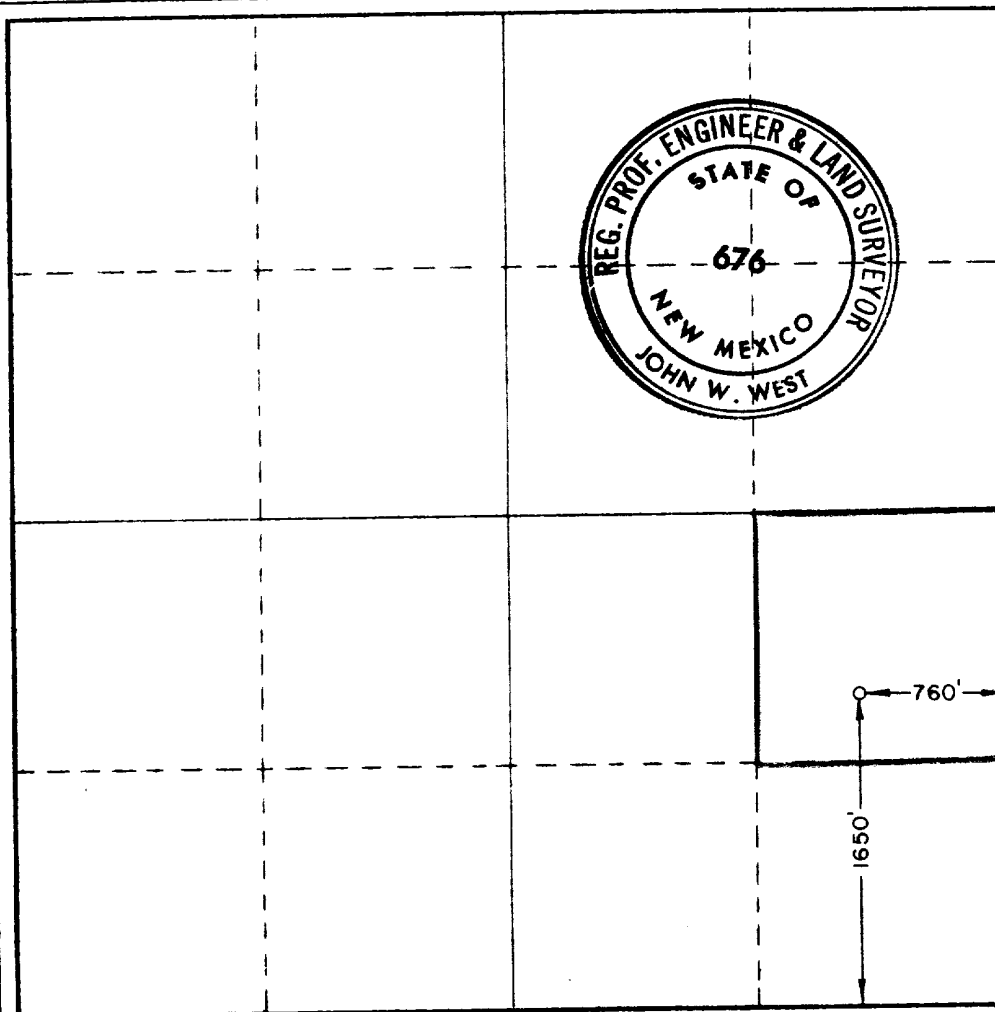
Operator General American Oil Company of Texas			Lease Burch "A"		Well No. 31
Unit Letter 1	Section 19	Township 17 South	Range 30 East	County Eddy	
Actual Footage Location of Well: 1650 feet from the South line and 760 feet from the East line					
Ground Level Elev. 3612.9	Producing Formation Grayburg & San Andres		Pool Grayburg Jackson		Dedicated Acreage: 40 Acres

1. Outline the acreage dedicated to the subject well by colored pencil or hatchure marks on the plat below.
2. If more than one lease is dedicated to the well, outline each and identify the ownership thereof (both as to working interest and royalty).
3. If more than one lease of different ownership is dedicated to the well, have the interests of all owners been consolidated by communitization, unitization, force-pooling, etc?

☐ Yes ☐ No If answer is "yes," type of consolidation _____

If answer is "no," list the owners and tract descriptions which have actually been consolidated. (Use reverse side of this form if necessary.) _____

No allowable will be assigned to the well until all interests have been consolidated (by communitization, unitization, forced-pooling, or otherwise) or until a non-standard unit, eliminating such interests, has been approved by the Commission.



CERTIFICATION

I hereby certify that the information contained herein is true and complete to the best of my knowledge and belief.

Name *Roy Crow*
Roy Crow
Position
District Superintendent
Company
General American Oil Co. of Tex.

Date
August 1, 1974
RECEIVED
AUG 27 1974
I hereby certify that the well location shown on this plat was located from field notes of Section 19, Township 17 South, Range 30 East, by me or under my supervision, and that the same is true and correct to the best of my knowledge and belief.

Date Surveyed
July 15, 1974
Registered Professional Engineer and/or Land Surveyor

John W. West
Certificate No. **676**



SURFACE USE CHECK LIST
GENERAL AMERICAN'S PROPOSED INFILL WELLS

BURCH "A" #31

Section 19, Township 19-S, Range 30-E

Eddy County, New Mexico

1. Existing roads are shown on Exhibit "A".
2. Planned access roads are shown on Exhibit "A". The small amount of new construction required will be surfaced with caliche.
3. The location of existing wells and the proposed wells are also shown on Exhibit "A".
4. Lateral roads to well locations are shown on Exhibit "A".
5. Locations of tank batteries and current flowlines are shown on Exhibit "A". Proposed flowlines are also shown. No new tank batteries will be necessary. New flowlines will be laid on top of the ground or buried along road right-of-ways and no special right-of-ways are planned for the flowlines.
6. Water supply for drilling will be either trucked or through pipe lines laid on road right-of-ways. No special right-of-ways will be made for water lines.
7. Waste disposal will be handled by an approved method at such time as it becomes necessary.
8. No Camps will be made.
9. No Airstrips will be made.
10. Location and layout including position of the rig, mud tanks, reserve pits, pipe rack, etc. are shown on Exhibit "B".
11. All pits used for drilling will be levelled back to their natural contours after they have dried.
12. The general topography of the drill sites are flat to very gently rolling land covered with sand dunes. The vegetation is mostly mesquite bushes, shinnery and a very small amount of grass.

621-27
GRUBER
BUREAU

• 0.15

• 0.10

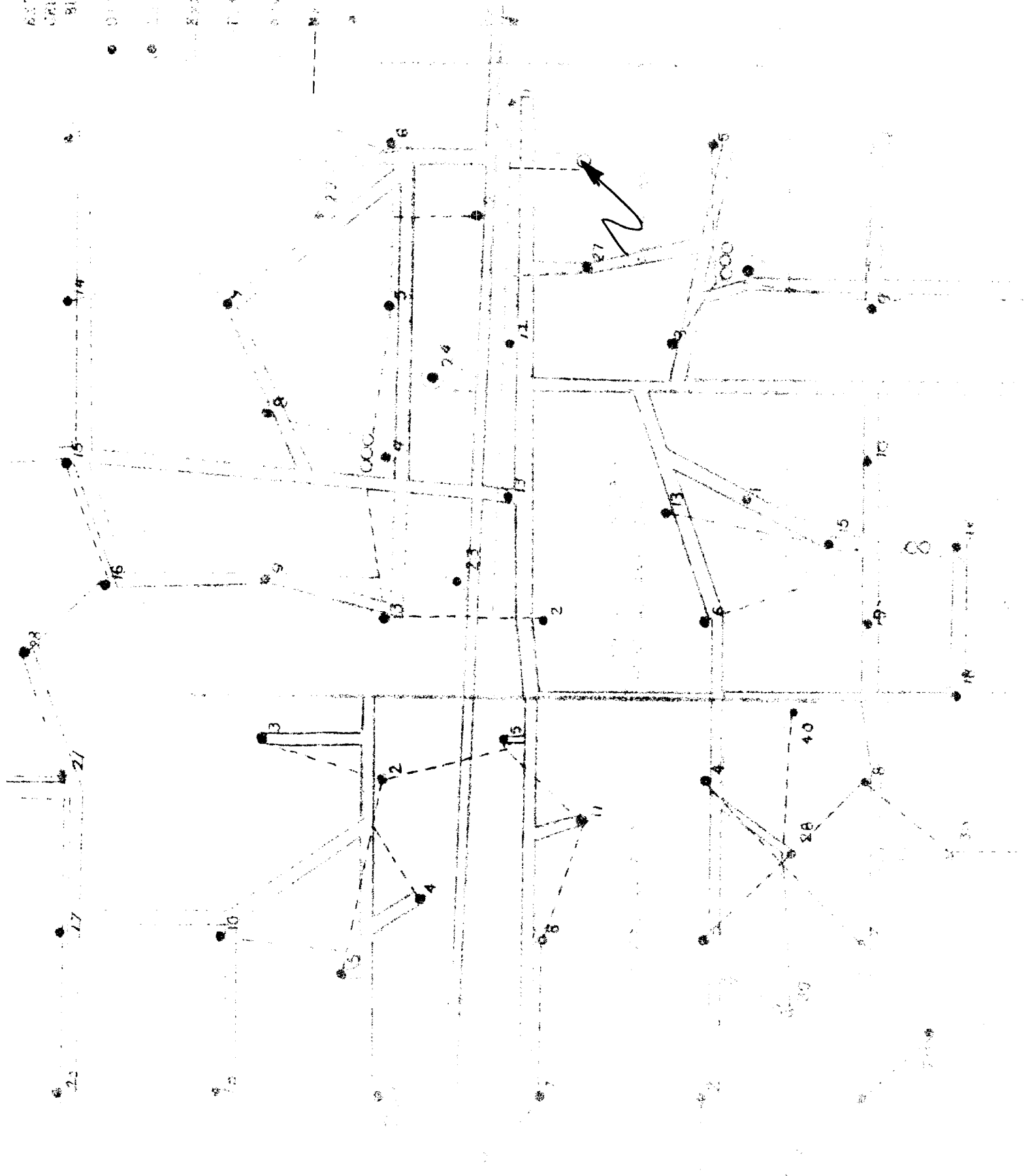
• 0.05

• 0.02

• 0.01

• 0.005

• 0.002



1940

