

UNITED STATES
DEPARTMENT OF THE INTERIOR
GEOLOGICAL SURVEY

Copy 651
30-015-21369

APPLICATION FOR PERMIT TO DRILL, DEEPEN, OR PLUG BACK

1. TYPE OF WORK
 DRILL DEEPEN PLUG BACK

2. NAME OF OPERATOR
 General American Oil Company of Texas ✓

3. ADDRESS OF OPERATOR
 P. O. Box 416 Loco Hills, New Mexico 88255

4. LOCATION OF WELL (Report location clearly and in accordance with any State requirements.)*
 At surface: 1295' FWL and 2615' FWL Section 23, T-17S, R-29E
 At proposed prod. zone

5. FIELD AND TOWN OR WELL NO.
 Grayburg-Jackson

6. COUNTY OR PARISH AND STATE
 Eddy New Mexico

7. DISTANCE IN MILES AND DIRECTION FROM NEAREST TOWN OR POST OFFICE*
 4 Miles West of Loco Hills, New Mexico 88255

8. DISTANCE FROM PROPOSED LOCATION TO NEAREST PROPERTY OR LEASE LINE, FT. (Also to nearest drlg. unit line, if any)
 1295

9. DISTANCE FROM PROPOSED LOCATION* TO NEAREST WELL, DRILLING COMPLETED, OR APPLIED FOR, ON THIS LEASE, ET.
 700'

10. NO. OF ACRES IN LEASE
 800

11. PROPOSED DEPTH
 3375'

12. NO. OF ACRES ASSIGNED TO THIS WELL
 40

13. ROTARY OR CABLE TOOLS
 Rotary

14. ELEVATIONS (Show whether DE, RT, GR, etc.)
 3581.2 GR

15. APPROX. DATE WORK WILL START*
 October 9, 1974

PROPOSED CASING AND CEMENTING PROGRAM

SIZE OF HOLE	SIZE OF CASING	WEIGHT PER FOOT	SETTING DEPTH	QUANTITY OF CEMENT
12-1/4	8-5/8"	20#	320'	100 sacks
7-7/8"	4-1/2"	9.5#	3375'	300 sacks

We propose to drill this well to 3375' and complete in the Grayburg and San Andres. All zones indicating porosity will be acidized or fraced.

Mud Program: Water and native mud will be used and approximately 100' from T.D. we will mud up to get hole in shape to log.

A 10" 3000# blowout preventer will be used in drilling this well.

This unorthodox location approved by NMOCC Order No. R4798 dated June 4, 1974.

RECEIVED
AUG 20 1974
U.S. GEOLOGICAL SURVEY

IN ABOVE SPACE DESCRIBE PROPOSED PROGRAM: If proposal is to deepen or plug back, give data on present production zone and proposed new productive zone. If proposal is to drill or deepen directionally, give pertinent data on subsurface locations and measured and true vertical depths. Give blowout preventer program, if any.

SIGNED Ray Lewis TITLE District Superintendent DATE August 20, 1974
 (This space for Federal or State office use)

PERMIT NO. _____ APPROVAL DATE _____

APPROVED BY [Signature] DATE _____
 CONDITIONS OF APPROVAL, IF ANY

APPROVED
SEP 1 1974
DISTRICT ENGINEER

THIS APPROVAL IS RESCINDED IF OPERATIONS ARE NOT COMMENCED WITHIN 3 MONTHS.
 EXPIRES DEC 1 2 1974

See Instructions On Reverse Side

UNITED STATES DEPARTMENT OF THE INTERIOR GEOLOGICAL SURVEY

Copy 6 SF 30-015-21369

APPLICATION FOR PERMIT TO DRILL, DEEPEN, OR PLUG BACK

1a. TYPE OF WORK DRILL [X] DEEPEN [] PLUG BACK []

b. TYPE OF WELL OIL WELL [X] GAS WELL [] OTHER [] SINGLE ZONE [] MULTIPLE ZONE []

2. NAME OF OPERATOR General American Oil Company of Texas [check] RECEIVED

3. ADDRESS OF OPERATOR P. O. Box 416 Loco Hills, New Mexico 88255 SEP 13 1974

4. LOCATION OF WELL (Report location clearly and in accordance with any State requirements.*) At surface 1295' FWL and 2615' FWL Section 23, T-17S, R-29E, S. At proposed prod. zone ARTESIA, OFFICE

14. DISTANCE IN MILES AND DIRECTION FROM NEAREST TOWN OR POST OFFICE* 4 Miles West of Loco Hills, New Mexico 88255

15. DISTANCE FROM PROPOSED* LOCATION TO NEAREST PROPERTY OR LEASE LINE, FT. (Also to nearest drlg. unit line, if any) 1295

16. NO. OF ACRES IN LEASE 800

17. NO. OF ACRES ASSIGNED TO THIS WELL 40

18. DISTANCE FROM PROPOSED* LOCATION TO NEAREST WELL, DRILLING COMPLETED, OR APPLIED FOR, ON THIS LEASE, FT. 700'

19. PROPOSED DEPTH 3375'

20. ROTARY OR CABLE TOOLS Rotary

21. ELEVATIONS (Show whether DF, RT, GR, etc.) 3581.2 GR

22. APPROX. DATE WORK WILL START* October 9, 1974

Table with 5 columns: SIZE OF HOLE, SIZE OF CASING, WEIGHT PER FOOT, SETTING DEPTH, QUANTITY OF CEMENT. Rows: 12-1/4, 8-5/8", 20#, 320', 100 sacks; 7-7/8", 4-1/2", 9.5#, 3375', 300 sacks.

We propose to drill this well to 3375' and complete in the Grayburg and San Andres. All zones indicating porosity will be acidized or fraced.

Mud Program: Water and native mud will be used and approximately 100' from T.D. we will mud up to get hole in shape to log.

A 10" 3000# blowout preventer will be used in drilling this well.

This unorthodox location approved by NMOCC Order No. R4798 dated June 4, 1974.

RECEIVED AUG 28 1974

IN ABOVE SPACE DESCRIBE PROPOSED PROGRAM: If proposal is to deepen or plug back, give data on present production and proposed production zone. If proposal is to drill or deepen directionally, give pertinent data on subsurface locations and measured and true vertical depths. Give blowout preventer program, if any.

SIGNED Roy Crow TITLE District Superintendent DATE August 26, 1974 (This space for Federal or State office use)

APPROVED SEP 12 1974 H. L. BEEKMAN ACTING DISTRICT ENGINEER

THIS APPROVAL IS RESCINDED IF OPERATIONS ARE NOT COMMENCED WITHIN 3 MONTHS. EXPIRES DEC 12 1974 See Instructions On Reverse Side



NEW MEXICO OIL CONSERVATION COMMISSION
WELL LOCATION AND ACREAGE DEDICATION PLAT

Form C-102
Superseded C-128
Effective 1-1-65

All distances must be from the outer boundaries of the Section.

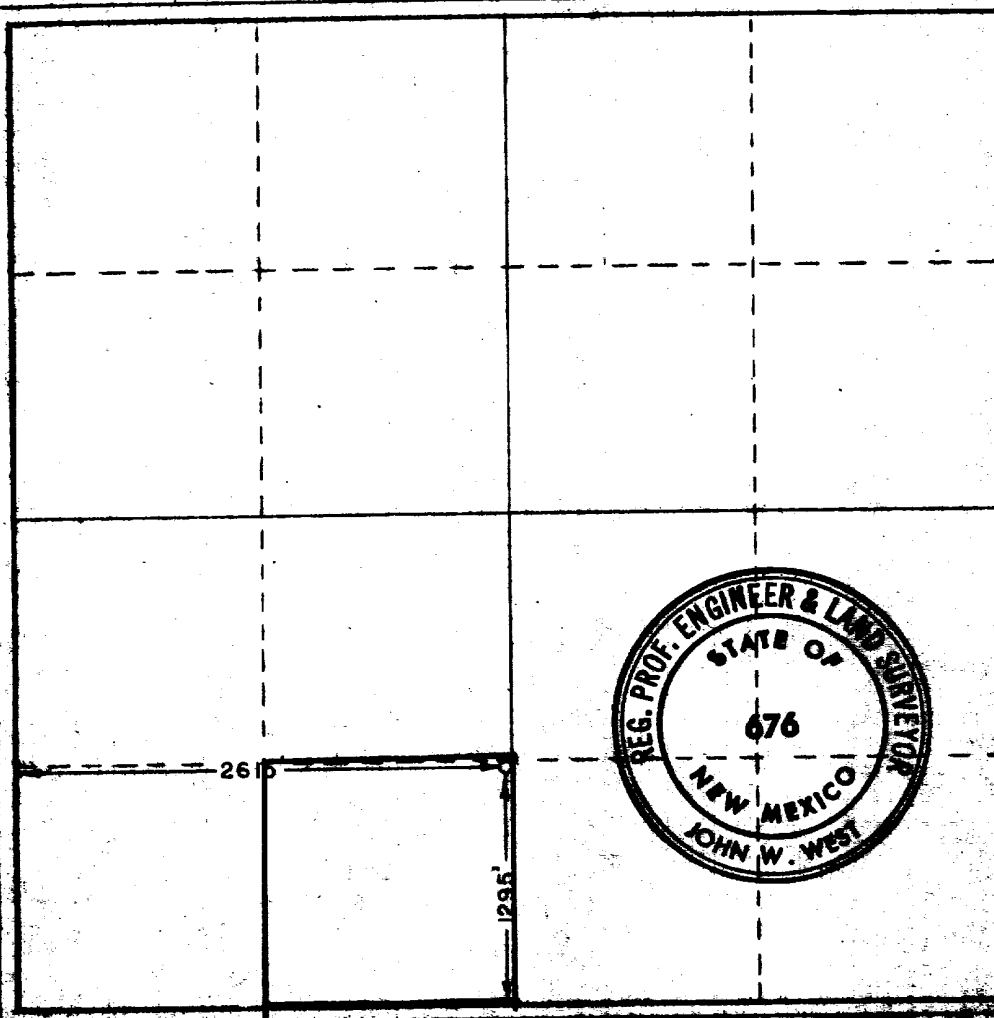
Operator General American Oil Company of Texas		Lease Block "B"			Well No. 30
Unit Letter N	Section 23	Township 17 South	Range 29 East	County Eddy	
Actual Well Location of Well: 1295 feet from the South line and 2615 feet from the West line					
Ground Level Elev. 3381.2	Producing Formation Grayburg & San Andres		Pool Grayburg Jackson	Dedicated Acreage: 40 Acres	

1. Outline the acreage dedicated to the subject well by colored pencil or hatchure marks on the plat below.
2. If more than one lease is dedicated to the well, outline each and identify the ownership thereof (both as to working interest and royalty).
3. If more than one lease of different ownership is dedicated to the well, have the interests of all owners been consolidated by communitization, unitization, force-pooling, etc?

Yes No If answer is "yes," type of consolidation _____

If answer is "no," list the owners and tract descriptions which have actually been consolidated. (Use reverse side of this form if necessary.) _____

No allowable will be assigned to the well until all interests have been consolidated (by communitization, unitization, forced-pooling, or otherwise) or until a non-standard unit, eliminating such interests, has been approved by the Commission.



CERTIFICATION

I hereby certify that the information contained herein is true and complete to the best of my knowledge and belief.

Roy Crow

Name
Roy Crow

Position
District Superintendent

Company
General American Oil Co. of Texas

Date
August 27, 1974

I hereby certify that the well location shown on this plat was plotted from notes of actual surveys made by me or under my supervision and that same is true and correct to the best of my knowledge.

RECEIVED
AUG 28 1974
U.S. GEOLOGICAL SURVEY
ARTESIA, NEW MEXICO

Date Surveyed
July 13, 1974

Registered Professional Engineer and/or Land Surveyor
John W. West

Certificate No. **676**

SURFACE USE CHECK LIST
GENERAL AMERICAN'S PROPOSED INFILL WELLS

BURCH "B" #30

Section 23, Township 17-S, Range 29-E

Eddy County, New Mexico

1. Existing roads are shown on Exhibit "A".
2. Planned access roads are shown on Exhibit "A". The small amount of new construction required will be surfaced with caliche.
3. The location of existing wells and the proposed wells are also shown on Exhibit "A".
4. Lateral roads to well locations are shown on Exhibit "A".
5. Locations of tank batteries and current flowlines are shown on Exhibit "A". Proposed flowlines are also shown. No new tank batteries will be necessary. New flow lines will be laid on top of the ground or buried along road right-of-ways and no special right-of-ways are planned for the flowlines.
6. Water supply for drilling will be either trucked or through pipe lines laid on road right-of-ways. No special right-of-ways will be made for water lines.
7. Waste disposal will be handled by an approved method at such time as it becomes necessary.
8. No Camps will be made.
9. No Airstrips will be made.
10. Location and layout including position of the rig, mud tanks, reserve pits, pipe rack, etc. are shown on Exhibit "B".
11. All pits used for drilling will be levelled back to their natural contours after they have dried.
12. The general topography of the drill sites are flat to very gently rolling land covered with sand dunes. The vegetation is mostly mesquite bushes, shinnery and a very small amount of grass.

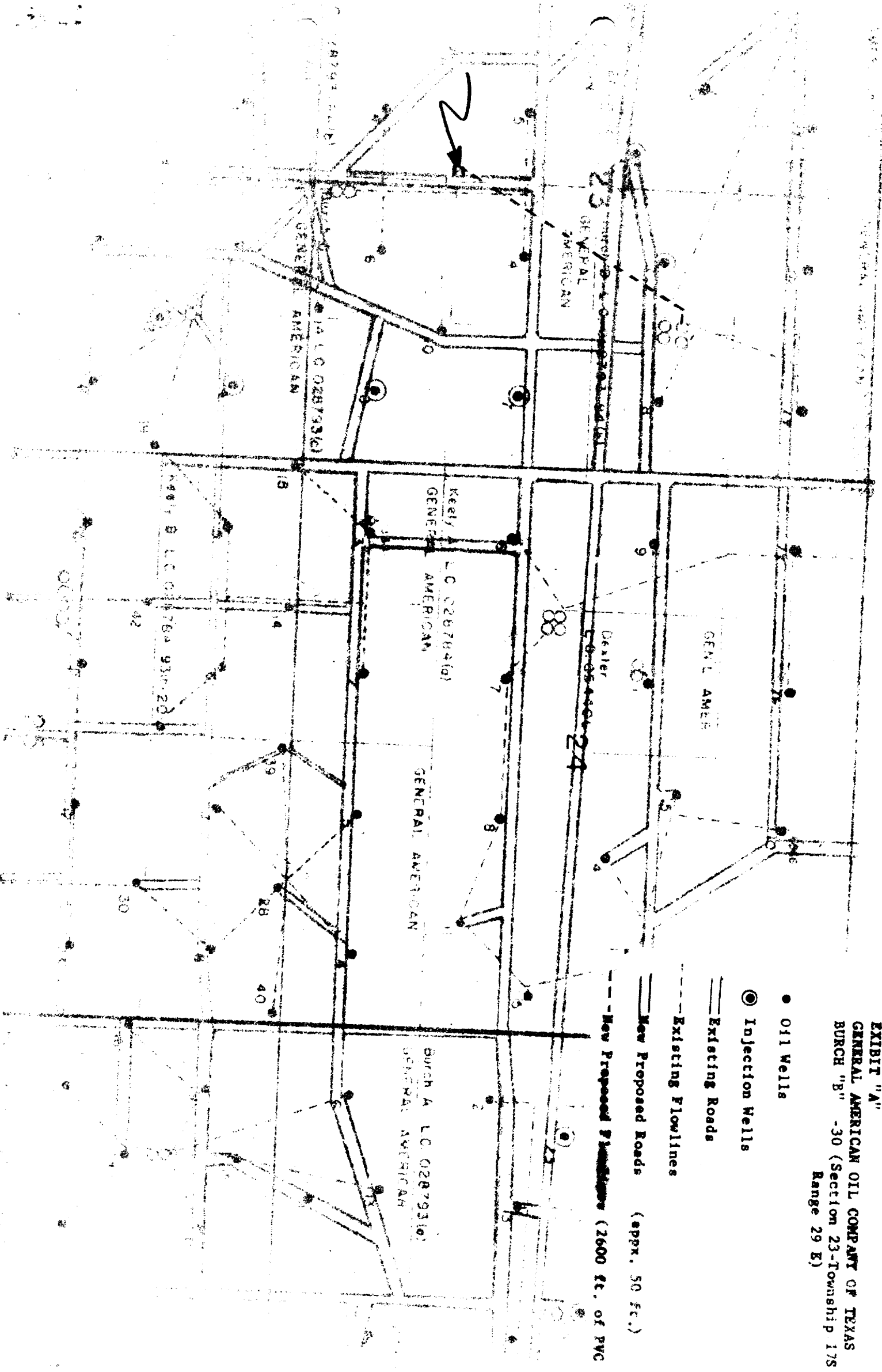
RECEIVED

JUN 10 1974

U.S. GEOLOGICAL SURVEY
ALBUQUERQUE, NEW MEXICO



EXHIBIT "A"
GENERAL AMERICAN OIL COMPANY OF TEXAS
 BURCH "B" -30 (Section 23-Township 17S
 Range 29 E)



- Oil Wells
- ◎ Injection Wells

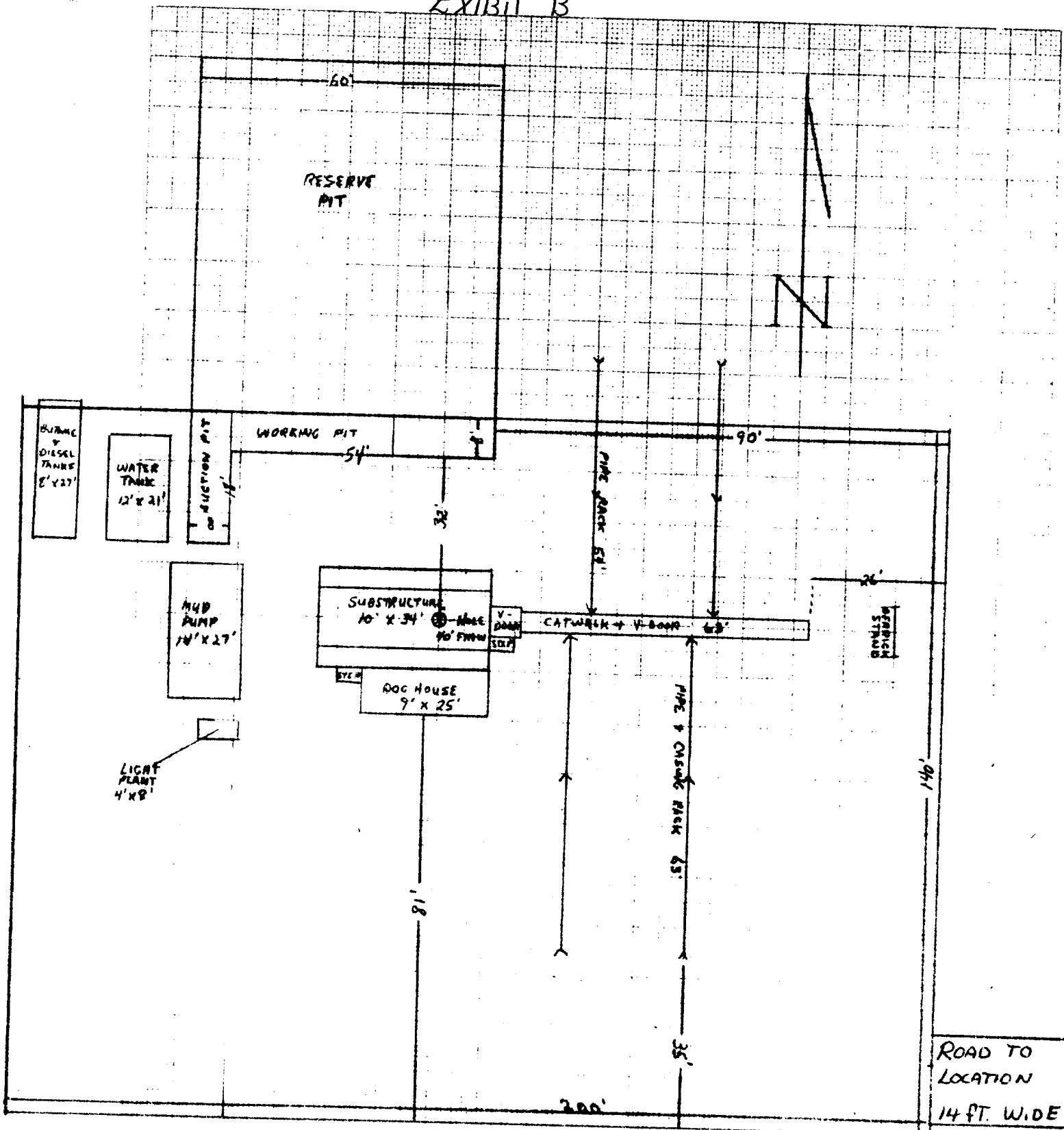
— Existing Roads

— Existing Flowlines

— New Proposed Roads (appx. 50 ft.)

— New Proposed Flowlines (2600 ft. of PVC)

EXHIBIT "B"





2023/07/04
100

