

UNITED STATES  
DEPARTMENT OF THE INTERIOR  
GEOLOGICAL SURVEY

RECEIVED

30-015-15834  
5. LEASE DESIGNATION AND SERIAL NO.

LC-028731 (B)

6. IF INDIAN, ALLOTTEE OR TRIBE NAME

7. UNIT AGREEMENT NAME

8. FARM OR LEASE NAME

M. Dodd "B"

9. WELL NO.

64

10. FIELD AND POOL, OR WILDCAT

Grbg Jackson SR Q Grbg SA

11. SEC., T., R., M., OR BLK.  
AND SURVEY OR AREA

Sec. 14-T17S-R29E

12. COUNTY OR PARISH 13. STATE

Eddy

NM

## APPLICATION FOR PERMIT TO DRILL, DEEPEN, OR PLUG BACK

1a. TYPE OF WORK

DRILL ☒DEEPEN ☐PLUG BACK ☐

b. TYPE OF WELL

OIL  
WELL ☒GAS  
WELL ☐

OTHER

SINGLE  
ZONE ☒O.C.D.  
ARTESIA OFFICE

2. NAME OF OPERATOR

Marbob Energy Corporation

3. ADDRESS OF OPERATOR

P.O. Drawer 217, Artesia, NM 88210

4. LOCATION OF WELL (Report location clearly and in accordance with any State requirements.)\*  
At surface

990 FSL 1560 FEL

At proposed prod. zone

same

14. DISTANCE IN MILES AND DIRECTION FROM NEAREST TOWN OR POST OFFICE\*

20 air miles east of Artesia, NM 88210

15. DISTANCE FROM PROPOSED\*

LOCATION TO NEAREST  
PROPERTY OR LEASE LINE, FT.  
(Also to nearest drlg. unit line, if any)

990'

16. NO. OF ACRES IN LEASE

1480

17. NO. OF ACRES ASSIGNED

TO THIS WELL  
40

18. DISTANCE FROM PROPOSED LOCATION\*

TO NEAREST WELL, DRILLING, COMPLETED,  
OR APPLIED FOR, ON THIS LEASE, FT.

330'

19. PROPOSED DEPTH

5000'

20. ROTARY OR CABLE TOOLS

Rotary

21. ELEVATIONS (Show whether DF, RT, GR, etc.)

3605.4' GR

22. APPROX. DATE WORK WILL START\*

11/20/87

23.

## PROPOSED CASING AND CEMENTING PROGRAM

SIZE OF HOLE	SIZE OF CASING	WEIGHT PER FOOT	SETTING DEPTH	QUANTITY OF CEMENT
12 1/4"	8 5/8"	24#	250'	Sufficient to circulate
7 7/8"	5 1/2"	17#	5000'	1500 sx, to base of salt. ✓

Pay zone will be selectively perforated and stimulated as needed for optimum production.

Attached are: 1. Location & acreage dedication plat  
2. Supplemental drilling data  
3. Surface use plan

RECEIVED

OCT 23 11 13 AM '87  
CARLOS J. GARCIA  
AREA HEADQUARTERSPost 10/27/87  
10/27/87

IN ABOVE SPACE DESCRIBE PROPOSED PROGRAM: If proposal is to deepen or plug back, give data on present productive zone and proposed new productive zone. If proposal is to drill or deepen directionally, give pertinent data on subsurface locations and measured and true vertical depths. Give blowout preventer program, if any.

24.

SIGNED

Rhonda Nelson

TITLE Production Clerk

DATE

10/27/87

(This space for Federal or State office use)

PERMIT NO.

APPROVAL DATE

APPROVED BY

TITLE

DATE

11-5-87

CONDITIONS OF APPROVAL, IF ANY:

\*See Instructions On Reverse Side

[illegible]

**NEW MEXICO OIL CONSERVATION COMMISSION  
WELL LOCATION AND ACREAGE DEDICATION PLAT**

Form C-102  
Supersedes C-128  
Effective 1-1-65

All distances must be from the outer boundaries of the Section

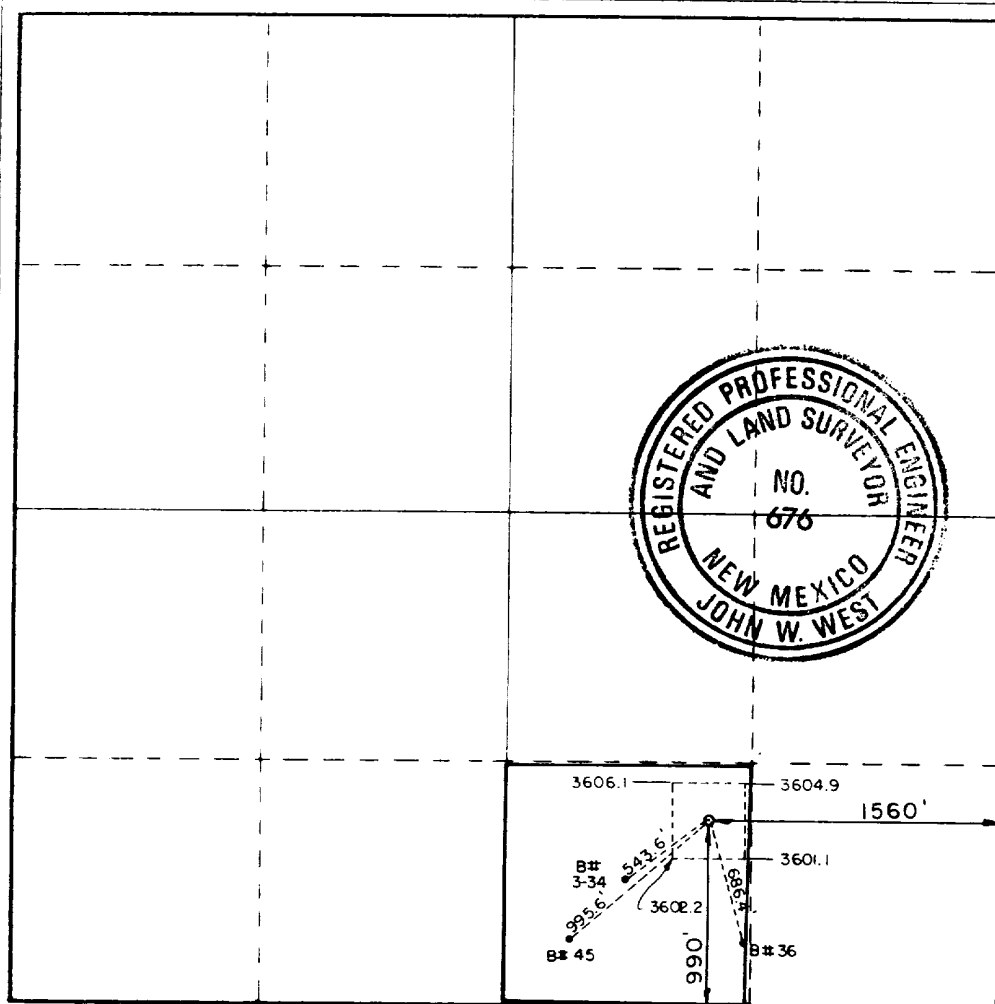
Operator <b>Marbob Energy Corp.</b>			Lease <b>M Dodd B</b>		Well No. <b>64</b>
Tract Letter <b>0</b>	Section <b>14</b>	Township <b>17-S</b>	Range <b>29-E</b>	County <b>Eddy</b>	
Actual Location of Well: <b>990</b> feet from the <b>South</b> line and <b>1560</b> feet from the <b>East</b> line					
Ground Level Elev. <b>3605.4</b>	Producing Formation <b>San Andres</b>	Pool <b>Grbg Jackson SR Q Grbg SA</b>		Dedicated Acreage: <b>40</b> Acres	

1. Outline the acreage dedicated to the subject well by colored pencil or hatchure marks on the plat below.
2. If more than one lease is dedicated to the well, outline each and identify the ownership thereof (both as to working interest and royalty).
3. If more than one lease of different ownership is dedicated to the well, have the interests of all owners been consolidated by communitization, unitization, force-pooling, etc?

☐ Yes ☐ No If answer is "yes," type of consolidation \_\_\_\_\_

If answer is "no," list the owners and tract descriptions which have actually been consolidated. (Use reverse side of this form if necessary.) \_\_\_\_\_

No allowable will be assigned to the well until all interests have been consolidated (by communitization, unitization, forced-pooling, or otherwise) or until a non-standard unit, eliminating such interests, has been approved by the Commission.



**CERTIFICATION**

I hereby certify that the information contained herein is true and complete to the best of my knowledge and belief.

*Rhonda Nelson*  
Name

**Rhonda Nelson**

Position  
**Production Clerk**

Company  
**Marbob Energy Corporation**

Date  
**10/27/87**

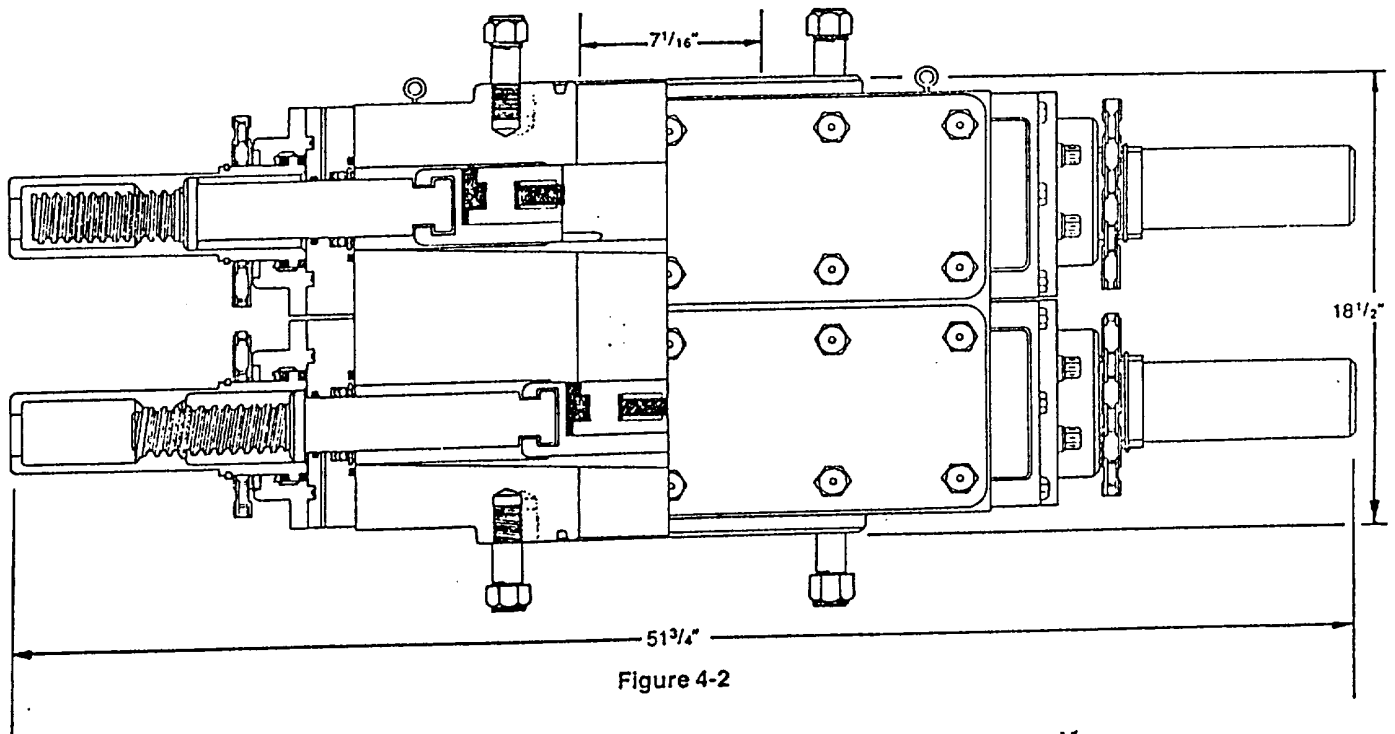
I hereby certify that the well location shown on this plat was plotted from field notes of actual surveys made by me or under my supervision, and that the same is true and correct to the best of my knowledge and belief.

Date Surveyed  
**October 26, 1987**

Registered Professional Engineer  
and/or Land Surveyor

*John W. West*

Certificate No. **JOHN W. WEST, 676**  
**RONALD J. EIDSON, 3239**



## DIMENSIONS AND WEIGHTS

		Manual
Weight	Single (pounds)	1,272
	Double (pounds)	2,335
Overall height, less studs	Single (inches)	10
	Double (inches)	18 1/2
Overall length (inches)		51 3/4
Overall width, less handwheel (inches)		20 1/4
Opening through preventer (inches)		7 1/16
Working pressure (psi)		3,000
Test pressure (psi)		6,000
Handwheel diameter (inches)		20
Ring joint gasket API number		R-45

SUP Exhibit "E"

BOP DIAGRAM  
 ARBOB ENERGY CORPORATION  
 MARY DODD "B" #64  
 SW1/4SE1/4 Sec.14-T17S-R29E

## SUPPLEMENTAL DRILLING DATA

MARBOB ENERGY CORPORATION  
WELL #64 M. DODD "B" FEDERAL  
SW1/4SE1/4, SEC.14-17S-29E  
EDDY COUNTY, NEW MEXICO  
(DEVELOPMENT WELL)

1. SURFACE FORMATION: Quaternary.

2. ESTIMATED TOPS OF GEOLOGIC MARKERS:

Salt	360'	Queen	1815'
Base Salt	780'	Grayburg	2140'
Yates	930'	San Andres	2510'
Seven Rivers	1145'	Glorietta	3900'

3. ANTICIPATED POROSITY ZONES:

Water	Above 180'
Oil	2350 - 5000

4. CASING DESIGN:

SIZE	INTERVAL	WEIGHT	GRADE	JOINT	CONDITION
8 5/8"	0-350'	24.0#	K-55	STC	New
5 1/2"	0-5000'	15.5#	K-55	STC	New

5. SURFACE CONTROL EQUIPMENT: A double ram-type or annular BOP will be used. (See diagram attached as Exhibit "E")

6. CIRCULATING MEDIUM:

0 - 350' Fresh water mud with gel or lime as needed for viscosity control.

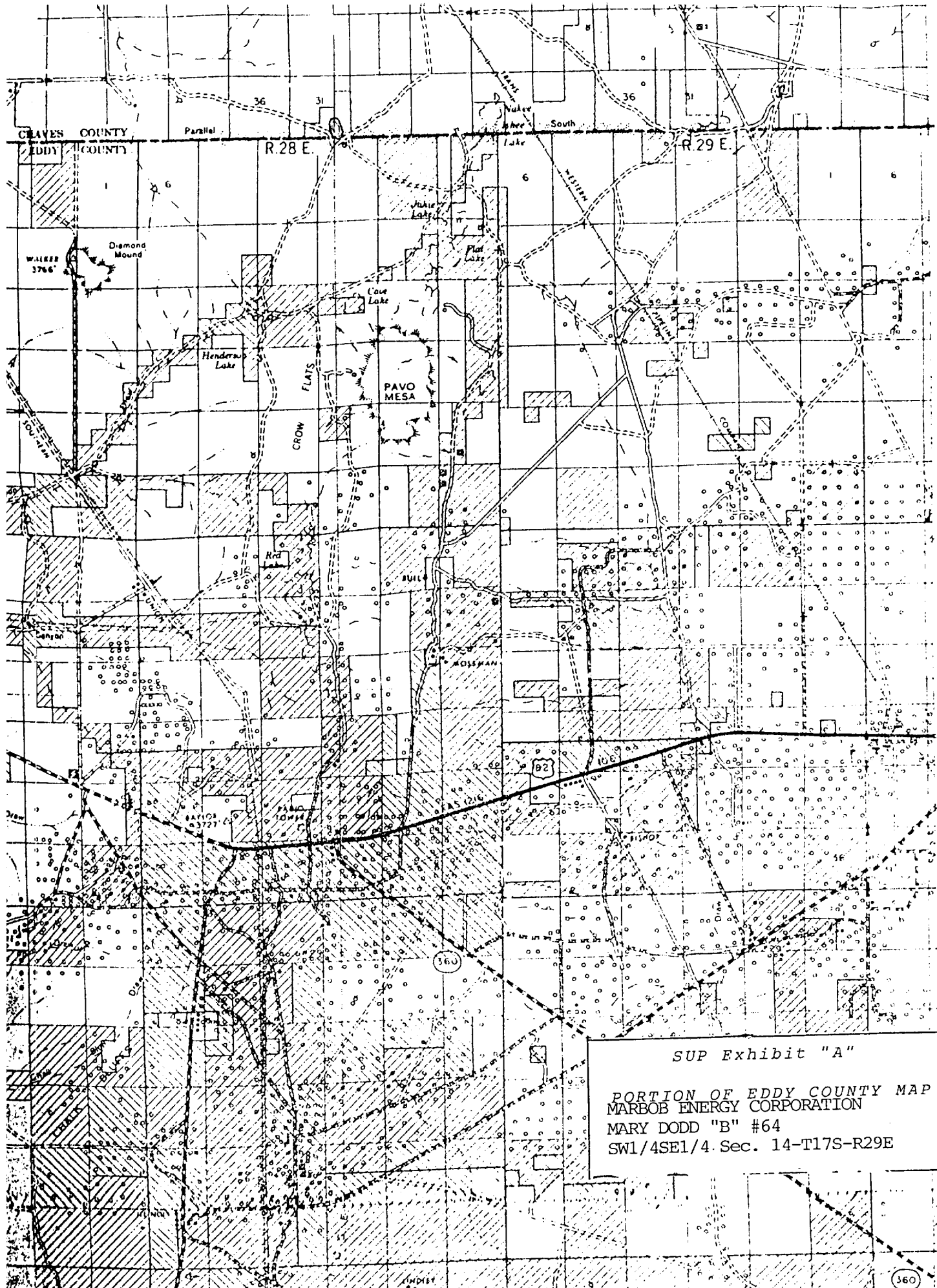
350' - 5000' Salt water mud, conditioned as necessary for control of viscosity and water loss or gain.

7. AUXILIARY EQUIPMENT: Drill string safety valve.

8. LOGGING PROGRAM: CNL-FDC W/GR Log will be run to TD.

9. ABNORMAL PRESSURES, TEMPERATURES OR GASES: A water flow may be encountered in the salt section.

10. ANTICIPATED STARTING DATE: It is planned that operations will commence about November 20, 1987. Duration of drilling, testing and completion operations should be one to four weeks.



T.15 S.

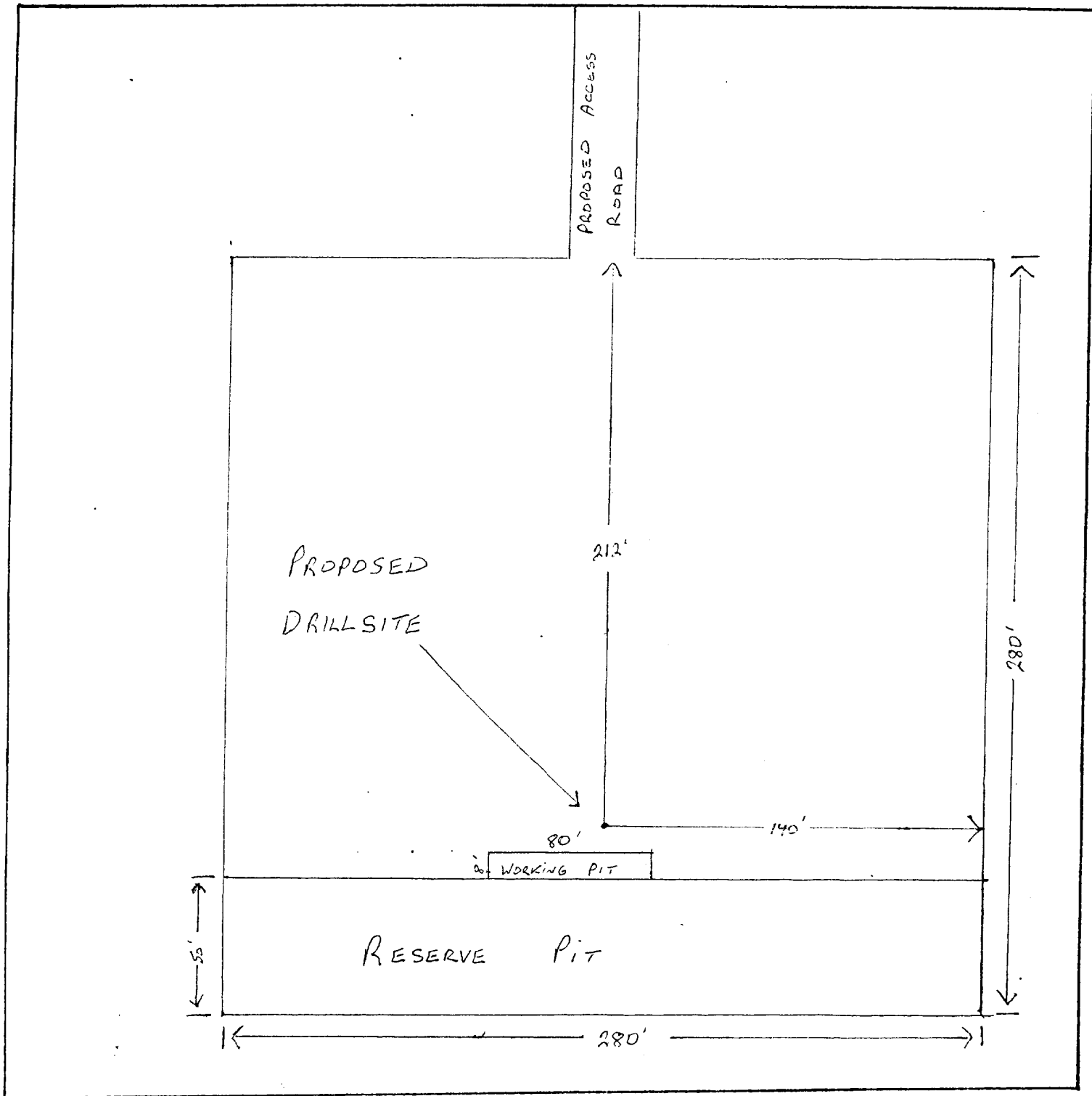
T.16 S

T.17 S

T.18 S

SUP Exhibit "A"

PORTION OF EDDY COUNTY MAP  
MARBOB ENERGY CORPORATION  
MARY DODD "B" #64  
SW1/4SE1/4 Sec. 14-T17S-R29E



LEGEND

1cm = 20 ft.

SUP Exhibit "D"

SKETCH OF PROPOSED WELL PAD  
 MARBOB ENERGY CORPORATION  
 MARY DODD "B" #64  
 SW1/4SE1/4 Sec.14-T17S-R29E

30-015-25834



**Oxford Pendaflex**

STOCK No. R753 1/3

• • • •

MADE IN U.S.A.

1-6-88  
Lateralog Microguard  
200-4577  
Compensated Spectral  
natural gamma  
2500-4576  
Spectral density dual  
spaced neutron log  
2200-4576

NSb-2464  
Appd. 1-29-88



