

Submit to Appropriate
District Office
State Lease - 4 copies
Fee Lease - 3 copies

State of New Mexico
Energy, Minerals and Natural Resources Department

Form C-102
Revised 1-1-89

OIL CONSERVATION DIVISION

P.O. Box 2088
Santa Fe, New Mexico 87504-2088

DISTRICT I

P.O. Box 1980, Hobbs, NM 88240

DISTRICT II

P.O. Drawer DD, Artesia, NM 88210

DISTRICT III

1000 Rio Brazos Rd., Aztec, NM 87410

WELL LOCATION AND ACREAGE DEDICATION PLAT

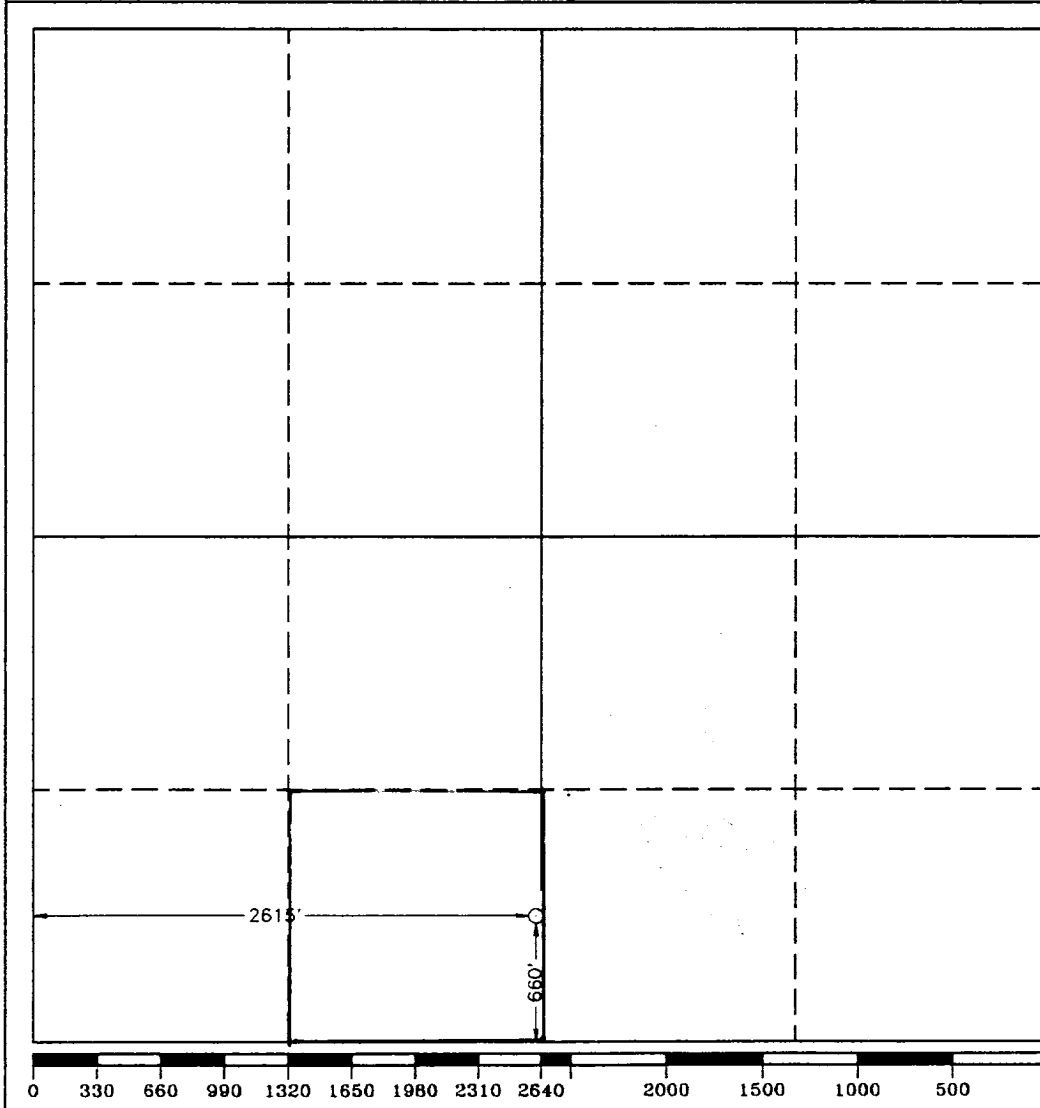
All Distances must be from the outer boundaries of the section

Operator MARBOB ENERGY CORP.		Lease BURCH-KEELY UNIT		Well No. 219
Unit Letter N	Section 24	Township 17 SOUTH	Range 29 EAST NMPM	County EDDY
Actual Footage Location of Well: 660 feet from the SOUTH line and 2615 feet from the WEST line				
Ground Level Elev. 3594.1'	Producing Formation Grayburg San Andres	Pool Grbg Jackson SR Q Grbg SA	Dedicated Acreage: 40 Acres	

1. Outline the acreage dedicated to the subject well by colored pencil or hachure marks on the plat below.
2. If more than one lease is dedicated to the well, outline each and identify the ownership thereof (both as to working interest and royalty).
3. If more than one lease of different ownership is dedicated to the well, have the interest of all owners been consolidated by communitization, unitization, force-pooling, etc.?
☐ Yes ☐ No If answer is "yes" type of consolidation _____

If answer is "no" list of owners and tract descriptions which have actually been consolidated. (Use reverse side of this form necessary.)

No allowable will be assigned to the well unit all interests have been consolidated (by communitization, unitization, forced-pooling, otherwise) or until a non-standard unit, eliminating such interest, has been approved by the Division.



OPERATOR CERTIFICATION

I hereby certify the the information contained herein is true and complete to the best of my knowledge and belief.

Signature
Rhonda Nelson
Printed Name
Rhonda Nelson
Position
Production Clerk
Company
Marbob Energy Corporation
Date
September 16, 1993

SURVEYOR CERTIFICATION

I hereby certify that the well location shown on this plat was plotted from field notes of actual surveys made by me or under my supervision, and that the same is true and correct to the best of my knowledge and belief.

Date Surveyed
SEPTEMBER 8, 1993

Signature & Seal of
Professional Surveyor

GARY L. JONES
NEW MEXICO
1977
Certificate No. JOHN W. VES 676
RONALD J. JONES 3239
GARY L. JONES 7977
93-11-1674