

District I  
PO Box 1980, Hobbs, NM 88241-1980  
District II  
811 S. 1st Street Artesia, NM 88210-1404  
District III  
1000 Rio Brazos Rd, Aztec, NM 87410  
District IV  
PO Box 2088, Santa Fe, NM 87504-2088

State of New Mexico  
Energy, Minerals & Natural Resources Department  
**OIL CONSERVATION DIVISION**  
PO Box 2088  
Santa Fe, NM 87504-2088

Form C-101  
Revised February 10, 1994  
Instructions on back  
Submit to Appropriate District Office  
State Lease - 6 Copies  
Fee Lease - 5 Copies

☐ AMENDED REPORT

APPLICATION FOR PERMIT TO DRILL, RE-ENTER, DEEPEN, PLUGBACK, OR ADD A ZONE

Operator Name and Address Mack Energy Corporation P.O. Box 960 Artesia, NM 88211-0960 SEP 20 1995		OGRID Number 013837 API Number 30-015-29180
Property Code 006104	Property Name G J West Coop Unit	Well No. 140

Surface Location

UL or lot no.	Section	Township	Range	Lot Idn	Feet from the	North/South line	Feet from the	East/West line	County
K	21	17S	29E		1700	South	1980	West	Eddy

Proposed Bottom Hole Location If Different From Surface

UL or lot No.	Section	Township	Range	Lot Idn	Feet from the	North/South line	Feet from the	East/West line	County
Proposed Pool 1 Undes. Empire Abo (22040)					Proposed Pool 2 Grayburg Jackson 7RVS-QN-GB-SA (28509)				

Work Type Code	Well Type Code	Cable/Rotary	Lease Type Code	Ground Level Elevation
N	O	R	S	3597
Multiple	Proposed Depth	Formation	Contractor	Spud Date
No	7500	Lower Abo	LaRue	9-30-96

Proposed Casing and Cement Program

Hole Size	Casing Size	Casing weight/foot	Setting Depth	Sacks of Cement	Estimated TOC
17 1/2	13 3/8	48	125	Circ	Post TD-1
12 1/4	8 5/8	32	750	Circ	10-4-96
7 7/8	5 1/2	17	7500	Sufficient to Circ	New hole + HPE

Describe the proposed program. If this application is to DEEPEN or PLUG BACK give the data on the present productive zone and proposed new productive zone. Describe the blowout prevention program, if any. Use additional sheets if necessary.

Mack Energy Corporation proposes to drill a Lower Abo test to 7500'. Drill to 125', run 13 3/8 casing and cement. Drill to 750', run 8 5/8 casing and cement. Drill to 7500 and test Lower Abo formation, if commercial will run 5 1/2 casing and cement. If not commercial will run 5 1/2 casing to 5000' and complete well in GJ West Coop Unit Formation. Put well on production.

I hereby certify that the information given above is true and complete to the best of my knowledge and belief

Signature

Crissa D. Carter

Printed name:

Crissa D. Carter

Title:

Production Clerk

Date:

9/26/96

Phone:

(505)748-1288

OIL CONSERVATION DIVISION

Approval by:

ORIGINAL SIGNED BY TIM W. GUM  
DISTRICT II SUPERVISOR

Title:

Approval Date:

9-27-96

Expiration Date

9-27-97

Conditions of Approval:

Attached ☐

DISTRICT I  
P.O. Box 1980, Hobbs, NM 88241-1980

State of New Mexico  
Energy, Minerals and Natural Resources Department

Form C-102  
Revised February 10, 1994  
Submit to Appropriate District Office  
State Lease - 4 Copies  
Fee Lease - 3 Copies

DISTRICT II  
P.O. Drawer DD, Artesia, NM 88211-0719

DISTRICT III  
1000 Rio Brazos Rd., Aztec, NM 87410

DISTRICT IV  
P.O. BOX 2088, SANTA FE, N.M. 87504-2088

## OIL CONSERVATION DIVISION

P.O. Box 2088  
Santa Fe, New Mexico 87504-2088

☐ AMENDED REPORT

### WELL LOCATION AND ACREAGE DEDICATION PLAT

API Number <b>30-015-29180</b>	Pool Code <b>22040</b>	Pool Name <b>Empire Abo</b>
Property Code <b>006104</b>	Property Name <b>G. J. WEST Coop Unit</b>	Well Number <b>140</b>
OGRID No. <b>013837</b>	Operator Name <b>MACK ENERGY COPORATION</b>	Elevation <b>3597'</b>

#### Surface Location

UL or lot No.	Section	Township	Range	Lot Idn	Feet from the	North/South line	Feet from the	East/West line	County
K	21	17 S	29 E		1700	SOUTH	1980	WEST	EDDY

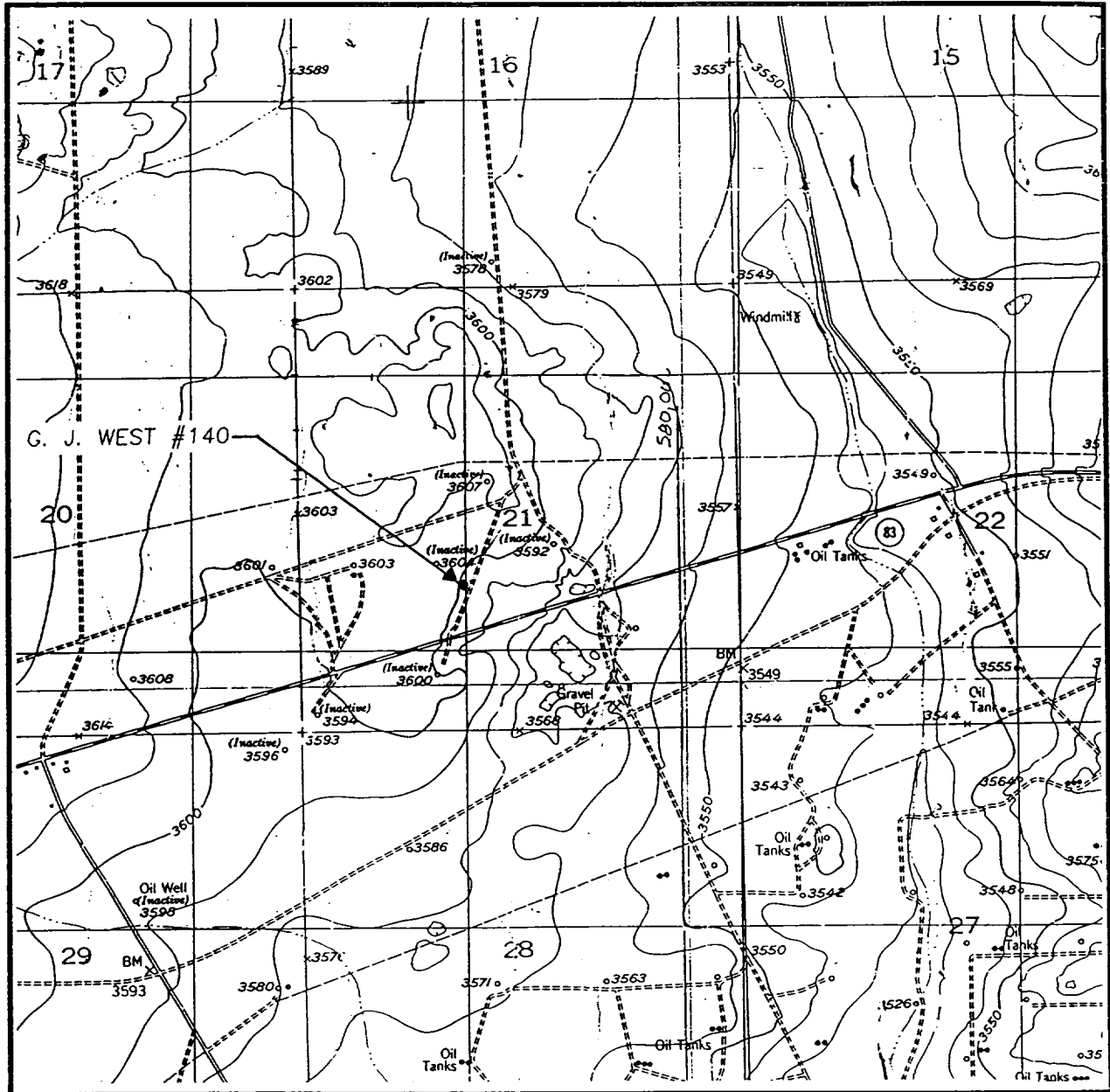
#### Bottom Hole Location If Different From Surface

UL or lot No.	Section	Township	Range	Lot Idn	Feet from the	North/South line	Feet from the	East/West line	County
Dedicated Acres <b>40</b>	Joint or Infill	Consolidation Code	Order No.						

NO ALLOWABLE WILL BE ASSIGNED TO THIS COMPLETION UNTIL ALL INTERESTS HAVE BEEN CONSOLIDATED  
OR A NON-STANDARD UNIT HAS BEEN APPROVED BY THE DIVISION

	<b>OPERATOR CERTIFICATION</b>  I hereby certify the the information contained herein is true and complete to the best of my knowledge and belief.   Signature Crissa D. Carter Printed Name Production Clerk Title 9/26/96 Date	
	<b>SURVEYOR CERTIFICATION</b>  I hereby certify that the well location shown on this plat was plotted from field notes of actual surveys made by me or under my supervision and that the same is true and correct to the best of my belief.  SEPTEMBER 24, 1996 Date Surveyed Signature & Seal Professional Surveyor  W.O. Num 96-1231 Certificate No. JOHN WEST 676 RONALD J. EIDSON 3239 PROFESSIONAL SURVEYOR 12641	

# LOCATION VERIFICATION MAP



SCALE: 1" = 2000'

CONTOUR INTERVAL:  
RED LAKE SE - 10'

SEC. 21 TWP. 17-S RGE. 29-E

SURVEY N.M.P.M.

COUNTY EDDY

DESCRIPTION 1700' FSL & 1980' FWL

ELEVATION 3597'

OPERATOR MACK ENERGY CORPORATION

LEASE G. J. WEST

U.S.G.S. TOPOGRAPHIC MAP

RED LAKE SE N. MEX

**JOHN WEST ENGINEERING**  
**HOBBS, NEW MEXICO**  
**(505) 393-3117**