

UNITED STATES  
DEPARTMENT OF THE INTERIOR  
BUREAU OF LAND MANAGEMENT

FORM APPROVED  
Budget Bureau No. 1004-0135  
Expires: March 31, 1993

SUNDRY NOTICES AND REPORTS ON WELLS

Do not use this form for proposals to drill or to deepen or reentry to a different reservoir.  
Use "APPLICATION FOR PERMIT -" for such proposals

SUBMIT IN TRIPLICATE

1. Type of Well: ☐ OIL WELL ☒ GAS WELL ☐ OTHER

2. Name of Operator  
TEXACO EXPLORATION & PRODUCTION INC.

3. Address and Telephone No. 205 E. Bender, HOBBS, NM 88240 397-0405

4. Location of Well (Footage, Sec., T., R., M., or Survey Description)  
Unit Letter K : 2140 Feet From The SOUTH Line and 1980 Feet From The  
WEST Line Section 25 Township 17-S Range 30-E

5. Lease Designation and Serial No.  
LC 030570B

6. If Indian, Allottee or Tribe Name

7. If Unit or CA, Agreement Designation

8. Well Name and Number  
LOCO 25 FEDERAL COM.

1

9. API Well No.  
30 015 29476

10. Field and Pool, Exploratory Area  
LOCO HILLS STRAWN

11. County or Parish, State  
EDDY, NM

12. Check Appropriate Box(s) To Indicate Nature of Notice, Report, or Other Data

TYPE OF SUBMISSION

- ☒ Notice of Intent  
☐ Subsequent Report  
☐ Final Abandonment Notice

TYPE OF ACTION

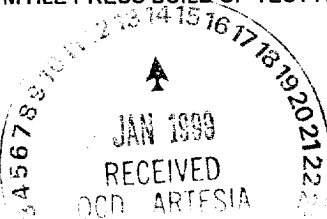
- ☐ Abandonment  
☒ Recompletion  
☐ Plugging Back  
☐ Casing Repair  
☐ Altering Casing  
☒ OTHER: RECOMPLETE TO STRAWN  
☐ Change of Plans  
☐ New Construction  
☐ Non-Routine Fracturing  
☐ Water Shut-Off  
☐ Conversion to Injection  
☐ Dispose Water

(Note: Report results of multiple completion on Well Completion or Recompletion Report and Log Form.)

13. Describe Proposed or Completed Operations (Clearly state all pertinent details, and give pertinent dates, including estimated date of starting any proposed work. If well is directionally drilled, give subsurface locations and measured and true vertical depths for all markers and zones pertinent to this work.)

TEXACO INTENDS TO RECOMPLETE THE SUBJECT WELL TO THE STRAWN FORMATION.  
THE INTENDED PROCEDURE IS AS FOLLOWS:

- TOH W/TBG, & PKR. REDRESS PKR & ON-OFF TOOL.
- SET CIBP WITHIN 100' OF TOP ATOKA PERF @ 10,798'. DUMP 35' CMT ON TOP OF CIBP. PRESS TEST CSG TO 1000 PSIG FOR 30 MIN. RUN CBL FR 10,550' TO 4400'.
- TIH W/WIRELINE RE-ENTRY GUIDE, PKR, ON-OFF TOOL, CROSSOVERS, & TBG. CIRC BACKSIDE W/PKR FLUID. PSA 10,400'.
- SWAB DN TO 8000'. PERF STRAWN INTERVAL FR 10,495'-10,502'.
- ESTAB RATE INTO STRAWN PERFS W/2% KCL WTR. ACIDIZE STRAWN PERFS 10,495-10,502' W/2500 GALS 15% HCL & 30 BALL SEALERS. BLEED OFF PRESS & PUT WELL ON PROD.
- FLOW WELL UNTIL PRESS & RATE STABILIZE. RUN 120 HR BTM HLE PRESS BUILD UP TEST AFTER 2 WKS. RETURN WELL TO PROD.



14. I hereby certify that the foregoing is true and correct

SIGNATURE J. Denise Leake TITLE Engineering Assistant

DATE 12/22/98

TYPE OR PRINT NAME J. Denise Leake

(This space for Federal or State office use)

APPROVED BY PROLEUM ENGINEER TITLE

DATE JAN 12 1999

CONDITIONS OF APPROVAL, IF ANY:

Title 18 U.S.C. Section 1001, makes it a crime for any person knowingly and willfully to make to any department or agency of the United States any false, fictitious or fraudulent statements or representations as to any matter within its jurisdiction.

DISTRICT I  
P.O. Box 1980, Hobbs, NM 88241-1980  
DISTRICT II  
P.O. Box Drawer DD, Artesia, NM 88211-0719  
DISTRICT III  
1000 Rio Brazos Rd., Aztec, NM 87410  
DISTRICT IV  
P.O. Box 2088, Santa Fe, NM 87504-2088

State of New Mexico  
Energy, Minerals and Natural Resources Department

OIL CONSERVATION DIVISION

P.O. Box 2088  
Santa Fe, New Mexico 87504-2088

Form C-102  
Revised February 10, 1994  
Instructions on back  
Submit to Appropriate District Office  
State Lease - 4 Copies  
Fee Lease - 3 Copies  
☐ AMENDED REPORT

WELL LOCATION AND ACREAGE DEDICATION PLAT

<sup>1</sup> API Number 30 015 29476	<sup>2</sup> Pool Code	<sup>3</sup> Pool Name LOCO HILLS STRAWN
<sup>4</sup> Property Code 20664	<sup>5</sup> Property Name LOCO 25 FEDERAL COM.	
<sup>7</sup> OGRID Number 022351	<sup>8</sup> Operator Name TEXACO EXPLORATION & PRODUCTION INC.	<sup>6</sup> Well No. 1 <sup>9</sup> Elevation GR-3568'

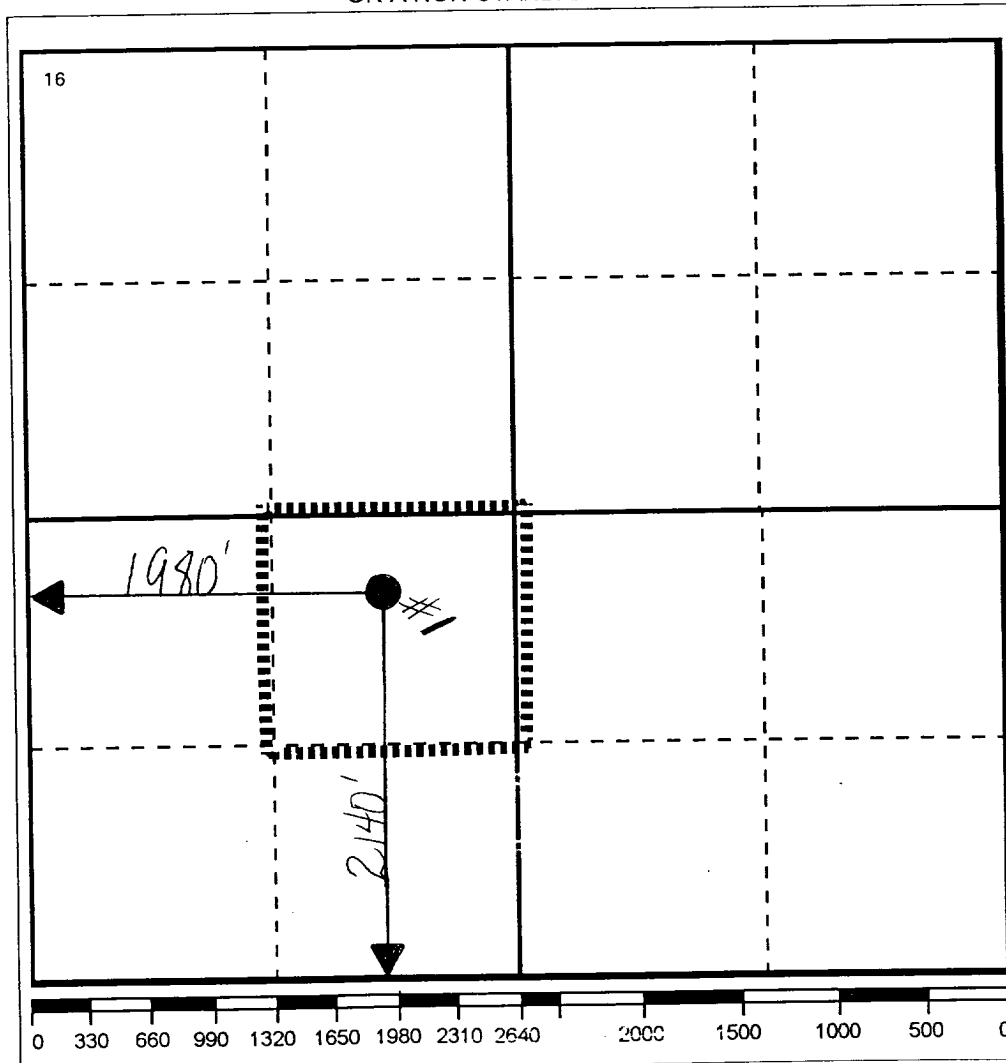
<sup>10</sup> Surface Location

UI or lot no.	Section	Township	Range	Lot.Idn	Feet From The	North/South Line	Feet From The	East/West Line	County
K	25	17-S	30-E		2140	SOUTH	1980	WEST	EDDY

<sup>11</sup> Bottom Hole Location If Different From Surface

UI or lot no.	Section	Township	Range	Lot.Idn	Feet From The	North/South Line	Feet From The	East/West Line	County
<sup>12</sup> Dedicated Acres		<sup>13</sup> Joint or Infill No		<sup>14</sup> Consolidation Code		<sup>15</sup> Order No.			

NO ALLOWABLE WILL BE ASSIGNED TO THIS COMPLETION UNTIL ALL INTERESTS HAVE BEEN CONSOLIDATED  
OR A NON-STANDARD UNIT HAS BEEN APPROVED BY THE DIVISION



<p><sup>17</sup> OPERATOR CERTIFICATION</p> <p>I hereby certify that the information contained herein is true and complete to the best of my knowledge and belief</p> <p>Signature <i>J. Denise Leake</i></p> <p>Printed Name J. Denise Leake</p> <p>Position Engineering Assistant</p> <p>Date 12/22/98</p>
<p><sup>18</sup> SURVEYOR CERTIFICATION</p> <p>I hereby certify that the well location shown on this plat was plotted from field notes of actual surveys made by me or under my supervision, and that the same is true and correct to the best of my knowledge and belief.</p> <p>Date Surveyed</p> <p>Signature &amp; Seal of Professional Surveyor</p> <p>Certificate No.</p>