

N. M. Oil Cons. Division
UNITED STATES DEPARTMENT OF THE INTERIOR
BUREAU OF LAND MANAGEMENT

CONTACT RECEIVING
OFFICE FOR NUMBER
OF COPIES REQUIRED
(other instructions on
reverse side)

30-015-29510

BLM Roswell District
Modified Form No.
M060-3160-2

DEPARTMENT OF THE INTERIOR
BUREAU OF LAND MANAGEMENT

APPLICATION FOR PERMIT TO DRILL, DEEPEN, OR PLUG BACK

1a. TYPE OF WORK
DRILL ☒ DEEPEN ☐ PLUG BACK ☐

b. TYPE OF WELL
OIL WELL ☒ GAS WELL ☐ OTHER ☐ SINGLE ZONE ☐ MULTIPLE ZONE ☐

2. NAME OF OPERATOR
Marbob Energy Corporation 14049

3. ADDRESS OF OPERATOR
P. O. Box 227 Artesia, NM 88210

4. LOCATION OF WELL (Report location clearly and in accordance with any State requirements)
At surface: 2515 FNL 330 FEL
At proposed prod. zone: SAME Unit H

14. DISTANCE IN MILES AND DIRECTION FROM NEAREST TOWN OR POST OFFICE
EAST OF ARTESIA ON HWY 82 APPROX 20.7 MILES

10. DISTANCE FROM PROPOSED LOCATION TO NEAREST PROPERTY OR LEASE LINE, FT. (Also to nearest drlg. unit line, if any) 330'

18. DISTANCE FROM PROPOSED LOCATION TO NEAREST WELL, DRILLING, COMPLETED, OR APPLIED FOR, ON THIS LEASE, FT.

16. NO. OF ACRES IN LEASE 640

17. NO. OF ACRES ASSIGNED TO THIS WELL 40

19. PROPOSED DEPTH 4800'

20. ROTARY OR CABLE TOOLS ROTARY

21. ELEVATIONS (Show whether DF, RT, GR, etc.) 3621' GR

22. APPROX. DATE WORK WILL START MAY 1, 1997

5. LEASE DESIGNATION AND SERIAL NO. LC-028793A

6. IF INDIAN, ALLOTTEE OR TRIBE NAME

7. UNIT AGREEMENT NAME BURCH KEELY UNIT 6497

8. FARM OR LEASE NAME

9. WELL NO. -848-269

10. FIELD AND POOL, OR WILDCAT GRBG JACKSON SR Q GRBG S

11. SEC., T., R., M., OR NEAR. AND SURVEY OR AREA SEC. 19-T17S-R30E

12. COUNTY OR PARISH EDDY

13. STATE NM

PROPOSED CASING AND CEMENT DATA						
HOLE SIZE	CASING SIZE	WEIGHT/FOOT	GRADE	THREAD TYPE	SETTING DEPTH	QUANTITY OF CEMENT
12 1/4"	8 5/8"	24#	J-55	LT&C	350'	CIRCULAR
7 7/8"	5 1/2"	17#	J-55	LT&C	4800'	CIRCULAR

PAY ZONE WILL BE SELECTIVELY PERFORATED AND STIMULATED AS NEEDED FOR OPTIMUM PRODUCTION.

ATTACHED ARE: 1. LOCATION & DEDICATION PLAT
2. SUPPLEMENTAL DRILLING DATA
3. SURFACE USE PLAN

SUBJECT TO
LIKE APPROVAL

BY STATE FOR

UNORTHODOX LOCATION

APPROVAL SUBJECT TO
GENERAL REQUIREMENTS AND
SPECIAL STIPULATIONS
ATTACHED

PLEASE SEE MASTER SURFACE USE PLAN ON FILE AT BLM OFFICE

IN ABOVE SPACE DESCRIBE PROPOSED PROGRAM: If proposal is to deepen or plug back, give data on present productive zone and proposed new productive zone. If proposal is to drill or deepen directionally, give pertinent data on subsurface locations and measured and true vertical depths. Give blowout preventer program, if any.

24. SIGNED Rhonda Nelson TITLE Production Clerk DATE 3/7/97

(This space for Federal or State office use)

PERMIT NO. APPROVAL DATE

APPROVED BY (ORIG. SGD.) TONY L. FERGUSON TITLE ADM. MINERALS DATE 4.9.97

CONDITIONS OF APPROVAL, IF ANY:

N. M. Oil Cons. Division

811 S. 1ST ST.

ARTESIA, NM 88210-2834

Form 3160-5
(June 1990)

UNITED STATES DEPARTMENT OF THE INTERIOR BUREAU OF LAND MANAGEMENT

FORM APPROVED
Budget Bureau No. 1004-0135
Expires: March 31, 1993

5. Lease Designation and Serial No.

LC-028793A

6. If Indian, Allottee or Tribe Name

7. If Unit or CA, Agreement Designation

BURCH KEELY UNIT

8. Well Name and No.

BURCH KEELY UNIT #269

9. API Well No.

30-015-

10. Field and Pool, or Exploratory Area

GRBG JACKSON SR Q GRBG SA

11. County or Parish, State

EDDY COUNTY, NM

SUNDRY NOTICES AND REPORTS ON WELLS

Do not use this form for proposals to drill or to deepen or reentry to a different reservoir.
Use "APPLICATION FOR PERMIT—" for such proposals

SUBMIT IN TRIPLICATE

1. Type of Well

☒ Oil Well ☐ Gas Well ☐ Other

2. Name of Operator

MARBOB ENERGY CORPORATION

3. Address and Telephone No.

P. O. BOX 227, ARTESIA, NM 88210

505-748-3303

4. Location of Well (Footage, Sec., T., R., M., or Survey Description)

2515 FNL 330 FEL

SEC. 19-T17S-R30E

UNIT H

12. CHECK APPROPRIATE BOX(s) TO INDICATE NATURE OF NOTICE, REPORT, OR OTHER DATA

TYPE OF SUBMISSION

☐ Notice of Intent
☒ Subsequent Report
☐ Final Abandonment Notice

TYPE OF ACTION

☐ Abandonment
☐ Recompletion
☐ Plugging Back
☐ Casing Repair
☐ Altering Casing
☐ Other CHANGE IN WELL NO.
☐ Change of Plans
☐ New Construction
☐ Non-Routine Fracturing
☐ Water Shut-Off
☐ Conversion to Injection
☐ Dispose Water

(Note: Report results of multiple completion on Well Completion or Recompletion Report and Log form.)

13. Describe Proposed or Completed Operations (Clearly state all pertinent details, and give pertinent dates, including estimated date of starting any proposed work. If well is directionally drilled, give subsurface locations and measured and true vertical depths for all markers and zones pertinent to this work.)*

CHANGE IN WELL NUMBER FROM: BURCH KEELY UNIT #848
TO: BURCH KEELY UNIT #269

RECEIVED

NR-4 '97

ADM
ROSWELL, NM

14. I hereby certify that the foregoing is true and correct

Signed Rhonda Nelson

Title PRODUCTION CLERK

Date 4/3/97

(This space for Federal or State office use)

Approved by ORIG. SGD. TONY L. FERGUSON

Title ADM, MINERALS

Date 4/9/97

Conditions of approval, if any:

Title 18 U.S.C. Section 1001, makes it a crime for any person knowingly and willfully to make to any department or agency of the United States any false, fictitious or fraudulent statements or representations as to any matter within its jurisdiction.

*See Instruction on Reverse Side

DISTRICT I
P.O. Box 1380, Hobbs, NM 88241-1980

DISTRICT II
P.O. Drawer DD, Artesia, NM 88211-0719

DISTRICT III
1000 Rio Brazos Rd., Aztec, NM 87410

DISTRICT IV
P.O. BOX 2088, SANTA FE, N.M. 87504-2088

State of New Mexico
Energy, Minerals and Natural Resources Department

Form C-102
Revised February 10, 1994
Submit to Appropriate District Office
State Lease - 4 Copies
Fee Lease - 3 Copies

OIL CONSERVATION DIVISION

P.O. Box 2088
Santa Fe, New Mexico 87504-2088

☐ AMENDED REPORT

WELL LOCATION AND ACREAGE DEDICATION PLAT

API Number	Pool Code 28509	Pool Name GRBG JACKSON SR Q GRBG SA
Property Code 6497	Property Name BURCH KEELY UNIT	Well Number 848
OGRID No. 14049	Operator Name MARBOB ENERGY COPORATION	Elevation 3621'

Surface Location

UL or lot No. H	Section 19	Township 17 S	Range 30 E	Lot Idn	Feet from the 2515	North/South line NORTH	Feet from the 330	East/West line EAST	County EDDY
--------------------	---------------	------------------	---------------	---------	-----------------------	---------------------------	----------------------	------------------------	----------------

Bottom Hole Location If Different From Surface

UL or lot No.	Section	Township	Range	Lot Idn	Feet from the	North/South line	Feet from the	East/West line	County
---------------	---------	----------	-------	---------	---------------	------------------	---------------	----------------	--------

Dedicated Acres 40	Joint or Infill	Consolidation Code	Order No.
-----------------------	-----------------	--------------------	-----------

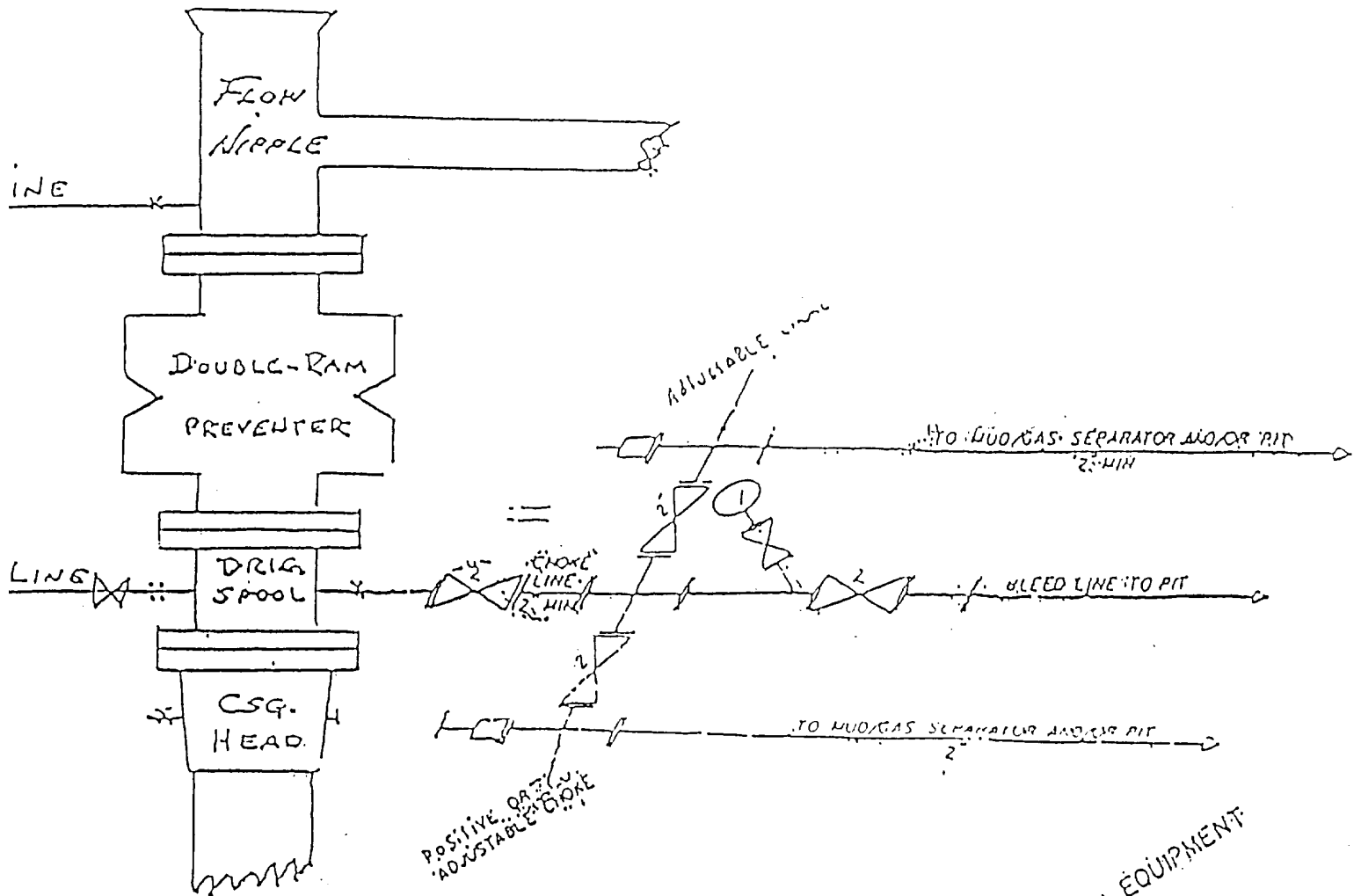
NO ALLOWABLE WILL BE ASSIGNED TO THIS COMPLETION UNTIL ALL INTERESTS HAVE BEEN CONSOLIDATED
OR A NON-STANDARD UNIT HAS BEEN APPROVED BY THE DIVISION

				<p>OPERATOR CERTIFICATION</p> <p>I hereby certify the the information contained herein is true and complete to the best of my knowledge and belief.</p> <p><i>Rhonda Nelson</i> Signature RHONDA NELSON Printed Name PRODUCTION CLERK Title 3/6/97 Date</p> <p>SURVEYOR CERTIFICATION</p> <p>I hereby certify that the well location shown on this plat was plotted from field notes of actual surveys made by me or under my supervision and that the same is true and correct to the best of my belief.</p> <p>FEBRUARY 21, 1997 Date Surveyed Signature of Professional Surveyor JOHN A. WEST Professional Surveyor 2-25-97 Certificate No. JOHN A. WEST 676 JOHN A. WEST 3239 JOHN A. WEST 12641</p>
--	--	--	--	--

EXHIBIT #1

B O P & CHOKE MANIFOLD

10"/900 Cameron SS Space Saver
3000# Working Pressure
3,000# Working Pressure Choke Manifold



MARBOB ENERGY CORPORATION

Burch Keely Unit No. 848
2515' FNL and 330' FEL
Section 19-17S-30E
Eddy County, New Mexico
Exhibit #1

2" CHOKE MANIFOLD EQUIPMENT

Attachment to Exhibit #1
NOTES REGARDING THE BLOWOUT PREVENTERS

1. Drilling nipple to be so constructed that it can be removed without use of a welder through rotary table opening, with minimum I.D. equal to preventer bore.
2. Wear ring to be properly installed in head.
3. Blow out preventer and all fittings must be in good condition, 3000 psi W.P. minimum.
4. All fittings to be flanged.
5. Safety valve must be available on rig floor at all times with proper connections, valve to be full bore 3000 psi W.P. minimum.
6. All choke and fill lines to be securely anchored, especially ends of choke lines.
7. Equipment through which bit must pass shall be at least as large as the diameter of the casing being drilled through.
8. Kelly cock on kelly.
9. Extension wrenches and hand wheels to be properly installed.
10. Blow out preventer control to be located as close to driller's position as feasible.
11. Blow out preventer closing equipment to include minimum 40 gallon accumulator, two independent sources of pump power on each closing unit installation, and meet all API specifications.