

N.M. Oil Cons. Div-Dist. 2

1301 W. Grand Avenue

Artesia, NM 88210

C/SF

Form 3160-3 (July 1992)

UNITED STATES DEPARTMENT OF THE INTERIOR BUREAU OF LAND MANAGEMENT

SUBMIT IN TRIPLICATE (Other copies for division reverse side)

FORM APPROVED OMB NO. 1004-0136 Expires: February 28, 1995

APPLICATION FOR PERMIT TO DRILL OR DEEPEN

1a. TYPE OF WORK

DRILL X

DEEPEN

b. TYPE OF WELL

OIL WELL X

GAS WELL

OTHER

SINGLE ZONE X

MULTIPLE ZONE

2. NAME OF OPERATOR

MARBOB ENERGY CORPORATION

3. ADDRESS AND TELEPHONE NO.

PO BOX 227, ARTESIA, NM 88210 505-748-3303

4. LOCATION OF WELL (Report location clearly and in accordance with any State requirements.)

At surface 1295 FNL 1980 FWL

At proposed prod. zone SAME

SUBJECT TO LIKE APPROVAL BY STATE

14. DISTANCE IN MILES AND DIRECTION FROM NEAREST TOWN OR POST OFFICE*

SEE SURFACE USE PLAN

15. DISTANCE FROM PROPOSED* LOCATION TO NEAREST PROPERTY OR LEASE LINE, FT (Also to nearest drilg. unit line, if any)

1295'

16. NO. OF ACRES IN LEASE

1120

17. NO. OF ACRES ASSIGNED TO THIS WELL

40

18. DISTANCE FROM PROPOSED LOCATION* TO NEAREST WELL, DRILLING, COMPLETED OR APPLIED FOR, ON THIS LEASE, FT.

19. PROPOSED DEPTH

4800'

20. ROTARY OR CABLE TOOLS

ROTARY

21. ELEVATIONS (Show whether DF, RT, GR, etc.)

3591' GR

22. APPROX. DATE WORK WILL START*

11/03/01

5. LEASE DESIGNATION AND SERIAL NO.

LC-028764C 027793C

6. IF INDIAN, ALLOTTEE OR TRIBE NAME

64977

7. UNIT AGREEMENT NAME

BURCH KEELY UNIT

8. FARM OR LEASE NAME, WELL NO.

BURCH KEELY UNIT #882

9. API WELL NO.

30-015-32092

10. FIELD AND POOL, OR WILDCAT

GRBF JACKSON SR Q GRBG SA

11. SEC., T., R., M., OR BLK. AND SURVEY OR AREA

SEC. 23-T17S-R29E

12. COUNTY OR PARISH

EDDY

13. STATE

NM

23. PROPOSED CASING AND CEMENTING PROGRAM

Roswell Controlled Water Basin

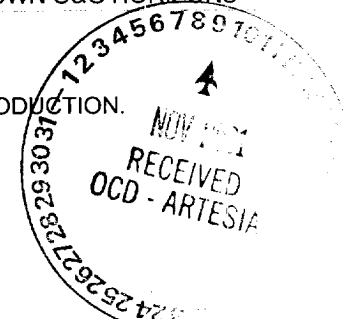
SIZE OF HOLE	GRADE, SIZE OF CASING	WEIGHT PER FOOT	SETTING DEPTH	QUANTITY OF CEMENT
12 1/4"	8 5/8" J55	24#	350'	300 SX
7 7/8"	5 1/2" J55	17#	4800'	SUFFICIENT TO COVER 200' ABOVE ALL KNOWN O&G HORIZONS

PAY ZONE WILL BE SELECTIVELY PERFORATED AND STIMULATED AS NEEDED FOR OPTIMUM PRODUCTION.

ATTACHED ARE:

1. WELL LOCATION AND ACREAGE DEDICATION PLAT
2. SUPPLEMENTAL DRILLING DATA
3. SURFACE USE PLAN

MASTER SURFACE USE PLAN ON FILE AT BLM OFFICE IN ROSWELL.



APPROVAL SUBJECT TO GENERAL REQUIREMENTS AND SPECIAL STIPULATIONS ATTACHED

IN ABOVE SPACE DESCRIBE PROGRAM: If proposal is to deepen, give data on present productive zone and proposed new productive zone. If proposal is to drill or deepen directionally, give pertinent data on subsurface locations and measured and true vertical depths. Give blowout preventer program, if any.

24. SIGNED [Signature] TITLE PRODUCTION ANALYST DATE 10/03/01

(This space for Federal or State office use)

PERMIT NO. APPROVAL DATE

Application approval does not warrant or certify that the applicant holds legal or equitable title to those rights in the subject lease which would entitle the applicant to conduct operations thereon. CONDITIONS OF APPROVAL, IF ANY:

APPROVED BY /s/ NOE GONZALEZ

Asst. FIELD MANAGER

DATE NOV 05 2001

*See Instructions On Reverse Side

APPROVAL FOR 1 YEAR

Title 18 U.S.C. Section 1001, makes it a crime for any person knowingly and willfully to make to any department or agency of the United States any false, fictitious or fraudulent statements or representations as to any matter within its jurisdiction.

ROSWELL, N.M.
#11

OCT 4 1951

RECEIVED

DISTRICT I
P.O. Box 1980, Hobbs, NM 88241-1980

DISTRICT II
P.O. Drawer 100, Artesia, NM 88211-0719

DISTRICT III
1000 Rio Brazos Rd., Artec, NM 87410

DISTRICT IV
P.O. BOX 2088, SANTA FE, N.M. 87504-2088

State of New Mexico
Energy, Minerals and Natural Resources Department

Form C-102
Revised February 10, 1994
Submit to Appropriate District Office
State Lease - 4 Copies
Fee Lease - 3 Copies

OIL CONSERVATION DIVISION
P.O. Box 2088
Santa Fe, New Mexico 87504-2088

WELL LOCATION AND ACREAGE DEDICATION PLAT

AMENDED REPORT

API Number	Pool Code	Pool Name
	28509	GRBG JACKSON SR Q GRBG SA
Property Code	Property Name	Well Number
6497	BURCH KEELY UNIT	882
OGRID No.	Operator Name	Elevation
14049	MARBOB ENERGY CORPORATION	3591'

Surface Location

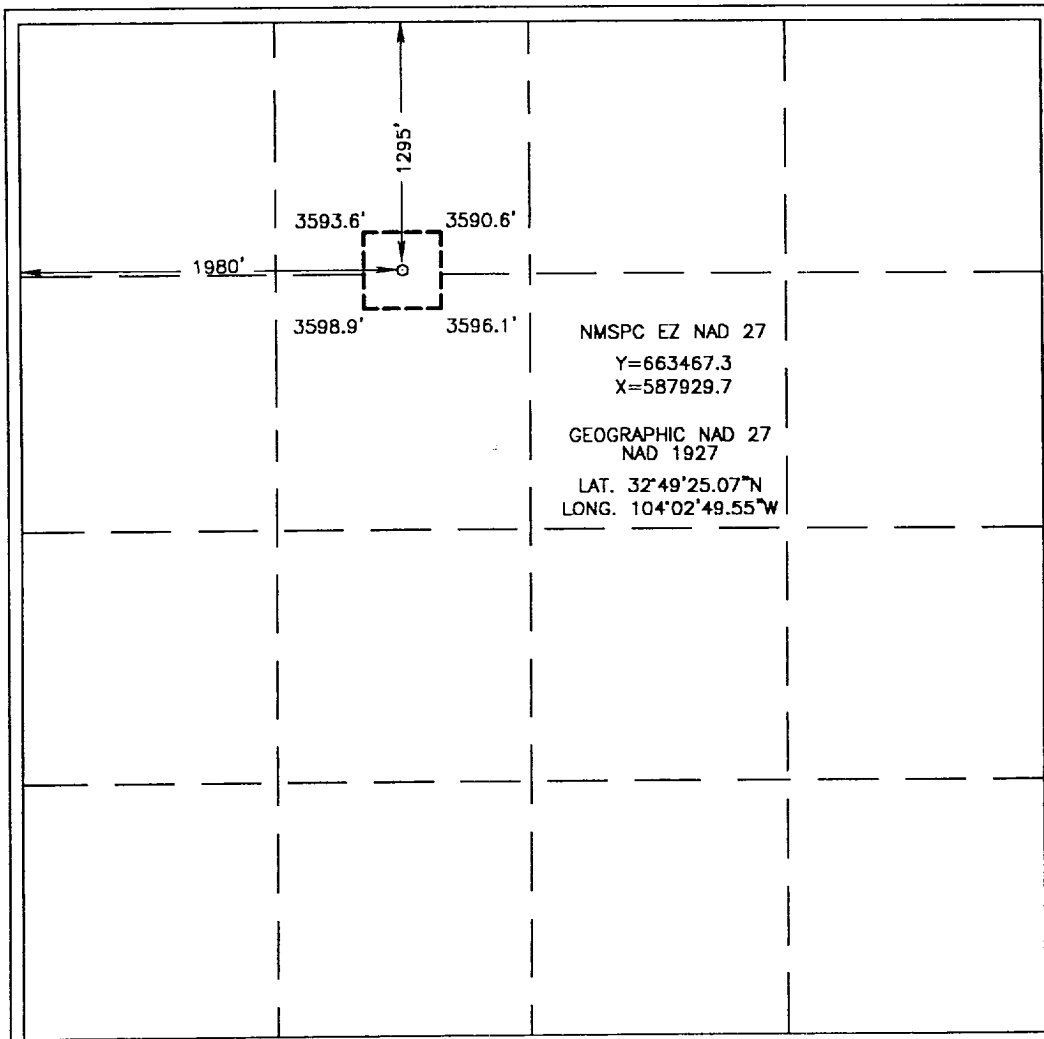
UL or lot No.	Section	Township	Range	Lot Idn	Feet from the	North/South line	Feet from the	East/West line	County
C	23	17-S	29-E		1295	NORTH	1980	WEST	EDDY

Bottom Hole Location If Different From Surface

UL or lot No.	Section	Township	Range	Lot Idn	Feet from the	North/South line	Feet from the	East/West line	County

Dedicated Acres	Joint or Infill	Consolidation Code	Order No.
40			

NO ALLOWABLE WILL BE ASSIGNED TO THIS COMPLETION UNTIL ALL INTERESTS HAVE BEEN CONSOLIDATED OR A NON-STANDARD UNIT HAS BEEN APPROVED BY THE DIVISION



OPERATOR CERTIFICATION

I hereby certify that the information contained herein is true and complete to the best of my knowledge and belief.

Diana J. Cannon
Signature

DIANA J. CANNON
Printed Name

PRODUCTION ANALYST
Title

OCTOBER 3, 2001
Date

SURVEYOR CERTIFICATION

I hereby certify that the well location shown on this plat was plotted from field notes of actual surveys made by me or under my supervision, and that the same is true and correct to the best of my belief.

SEPTEMBER 5, 2001
Date Surveyed

AWB
Signature & Seal of Professional Surveyor

Ronald J. Edson
01.11.1010

Certificate No. RONALD J. EDSON 3239
GARY EDSON 12641