

30-015-20976
Form C-101
Revised 1-1-65

NEW MEXICO OIL CONSERVATION COMMISSION
RECEIVED

OCT 1 1973

O. C. C.

APPLICATION FOR PERMIT TO DRILL, DEEPEN, OR PLUG BACK

NO. OF COPIES RECEIVED	
DISTRIBUTION	
SANTA FE	
FILE	
U.S.G.S.	
LAND OFFICE	
OPERATOR	

5A. Indicate Type of Lease
STATE FEE

5. State Oil & Gas Lease No.
B-6058-19

1a. Type of Work
DRILL DEEPEN PLUG BACK

b. Type of Well
OIL WELL GAS WELL OTHER

SINGLE ZONE MULTIPLE ZONE

7. Unit Agreement Name
West Loco Hills G. #4

8. Farm or Lease Name
Tract 32A

2. Name of Operator
Newmont Oil Company

3. Address of Operator
P. O. Box 1305, Artesia, New Mexico 88210

9. Well No.
8

10. Field and Pool, or Wildcat
 Loco Hills

4. Location of Well
UNIT LETTER J LOCATED 1560' FEET FROM THE South LINE
AND 1480' FEET FROM THE East LINE OF SEC. 11 TWP. 18S RGE. 29E NMPM

12. County
Eddy

19. Proposed Depth 2675' 19A. Formation Grayburg 20. Rotary or C.T. Rotary

21. Elevations (Show whether DF, RT, etc.) 3516' 21A. Kind & Status Plug. Bond Blanket 21B. Drilling Contractor Osborn Drlg. Co. 22. Approx. Date Work will start Nov. 1, 1973

PROPOSED CASING AND CEMENT PROGRAM

SIZE OF HOLE	SIZE OF CASING	WEIGHT PER FOOT	SETTING DEPTH	SACKS OF CEMENT	EST. TOP
10-3/4"	8-5/8"	#24	425'	100 sacks	Surface
7-7/8"	5-1/2"	#17	2675'	Circ. or 500 sks	

Drill infield well to recover oil that has not been recovered by wells No. 30-1 and 30-2 located in patterns formed by injection wells 11-10, 32A-6, 30-2, 13-9 and 35-2.

NSL-622
10-10-73

APPROVAL VALID FOR 90 DAYS UNLESS DRILLING COMMENCED, EXPIRES 1-11-74

IN ABOVE SPACE DESCRIBE PROPOSED PROGRAM: IF PROPOSAL IS TO DEEPEN OR PLUG BACK, GIVE DATA ON PRESENT PRODUCTIVE ZONE AND PROPOSED NEW PRODUCTIVE ZONE. GIVE BLOWOUT PREVENTER PROGRAM, IF ANY.

I hereby certify that the information above is true and complete to the best of my knowledge and belief.

Signed Charles C. Joy Title District Superintendent Date 9/28/73

(This space for State Use)

APPROVED BY W. A. Gressitt TITLE OIL AND GAS INSPECTOR DATE OCT 11 1973

CONDITIONS OF APPROVAL, IF ANY:

NEW MEXICO OIL CONSERVATION COMMISSION
WELL LOCATION AND ACREAGE DEDICATION PLAT

Form C-102
Supersedes C-128
Effective 1-1-65

All distances must be from the outer boundaries of the Section.

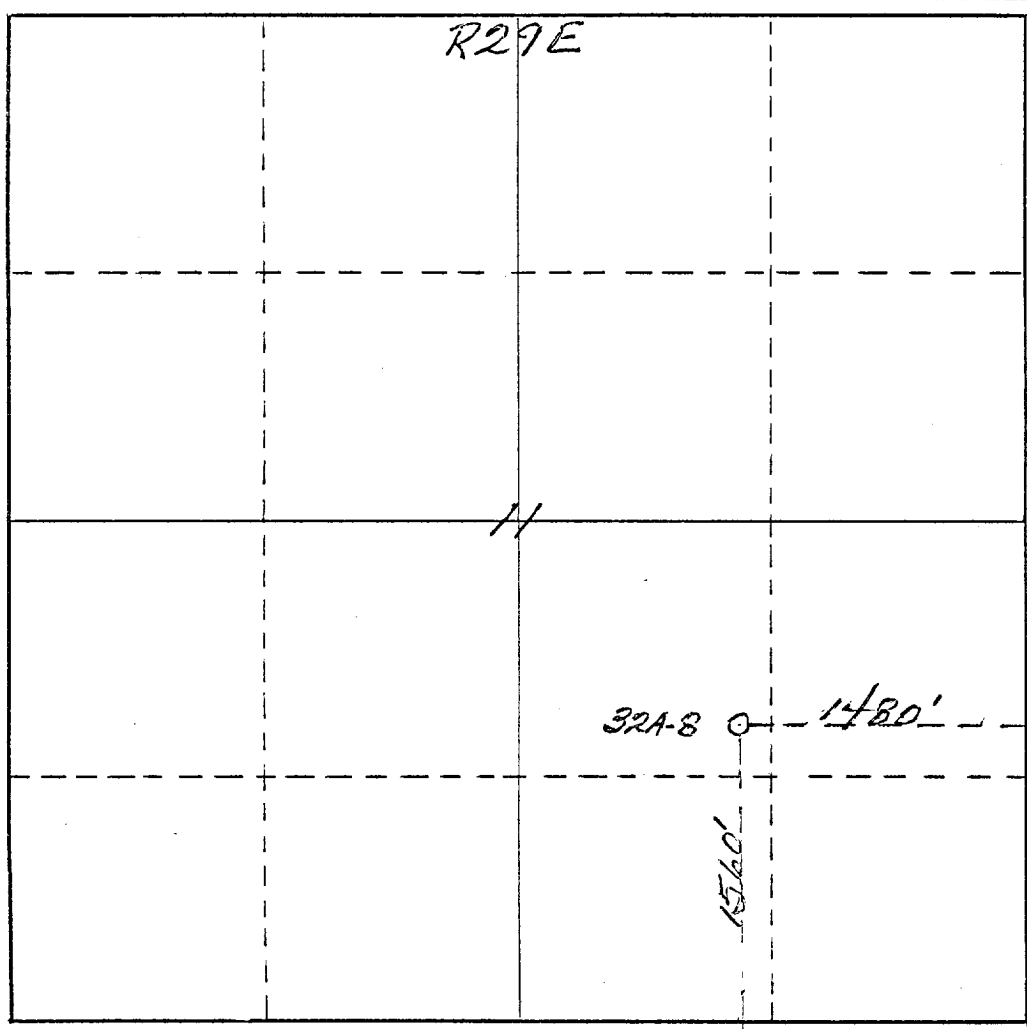
Operator <i>Newmont Oil Company</i>		Lease <i>West Loco Hills Grb #4 S, U.T. Tr. 32A</i>			Well No. <i>8</i>
Unit Letter <i>J</i>	Section <i>11</i>	Township <i>18 South</i>	Range <i>29 East</i>	County <i>Eddy</i>	
Actual Footage Location of Well: <i>1560</i> feet from the <i>South</i> line and <i>1480</i> feet from the <i>East</i> line					
Ground Level Elev. <i>3516</i>	Producing Formation <i>Loco Hills</i>		Pool <i>Loco Hills Queen Grb. S.A.</i>	Dedicated Acreage: <i>40</i> Acres	

1. Outline the acreage dedicated to the subject well by colored pencil or hachure marks on the plat below.
2. If more than one lease is dedicated to the well, outline each and identify the ownership thereof (both as to working interest and royalty).
3. If more than one lease of different ownership is dedicated to the well, have the interests of all owners been consolidated by communitization, unitization, force-pooling, etc?

Yes No If answer is "yes," type of consolidation _____

If answer is "no," list the owners and tract descriptions which have actually been consolidated. (Use reverse side of this form if necessary.) _____

No allowable will be assigned to the well until all interests have been consolidated (by communitization, unitization, forced-pooling, or otherwise) or until a non-standard unit, eliminating such interests, has been approved by the Commission.



CERTIFICATION

I hereby certify that the information contained herein is true and complete to the best of my knowledge and belief.

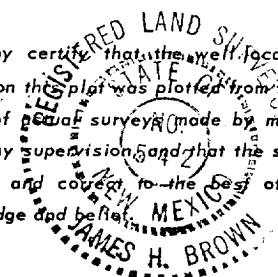
Conrad J. McLaughlin
Name
Office Manager

Position
NEWMONT OIL COMPANY

Company
October 1, 1973

Date

I hereby certify that the well location shown on this plat was plotted from field notes of *equal* survey made by me or under my supervision and that the same is true and correct to the best of my knowledge and belief.



Date Surveyed
September 29th 1973
Registered Professional Engineer
and/or Land Surveyor

James H. Brown
Certificate No. *542*

