

RECEIVED

NEW MEXICO OIL CONSERVATION COMMISSION
FEB 24 1977

30-015-22052

Form C-101
Revised 1-1-65

| | |
|------------------------|-----|
| NO. OF COPIES RECEIVED | 5 |
| DISTRIBUTION | |
| SANTA FE | 1 |
| FILE | 1 ✓ |
| U.S.G.S. | 2 |
| LAND OFFICE | |
| OPERATOR | 1 |

O. C. C.
Artesia, OFFICE

5A. Indicate Type of Lease
STATE FEE

5. State Oil & Gas Lease No.

APPLICATION FOR PERMIT TO DRILL, DEEPEN, OR PLUG BACK

1a. Type of Work

b. Type of Well DRILL DEEPEN PLUG BACK
OIL WELL GAS WELL OTHER SINGLE ZONE MULTIPLE ZONE

2. Name of Operator
Yates Petroleum Corporation

3. Address of Operator
207 South 4th Street - Artesia, NM 88210

4. Location of Well UNIT LETTER K LOCATED 1650 FEET FROM THE South LINE
AND 2310 FEET FROM THE West LINE OF SEC. 28 TWP. 18S RGE. 26E NMPM

7. Unit Agreement Name

8. Farm or Lease Name
Mallard "HM"

9. Well No.
2

10. Field and Pool, or Wildcat
Undesignated Yeso

12. County
Eddy

19. Proposed Depth
3100'

19A. Formation
Yeso

20. Rotary or C.T.
Rotary

21. Elevations (Show whether DF, RL, etc.)
3387'

21A. Kind & Status Plug. Bond
Blanket

21B. Drilling Contractor
Bryd Drilling Co.

22. Approx. Date Work will start
-

23. PROPOSED CASING AND CEMENT PROGRAM

| SIZE OF HOLE | SIZE OF CASING | WEIGHT PER FOOT | SETTING DEPTH | SACKS OF CEMENT | EST. TOP |
|--------------|-----------------|-----------------|---------------|-----------------|----------|
| 9-1/2" | 7" | 20# | 1170' | Circulate | |
| 6-1/4" | 4 1/2" & 5 1/2" | 10.5 & 15.5# | 3100' | Circulate | |

We proposed to drill a San Andres test and set intermediate casing at 1170' KB. The samples from the well did not show any commercial pay in the San Andres. We propose to deepen to 3100' to test the Yeso. A tapered string of 4 1/2" and 5 1/2" production will be run, if productive, perforate and stimulate as needed for production.

Mud Program: - Gel and LCM to 1200'. Fresh water to TD.

BOP Program: - 10" hydraulic BOP's will be set on 7" casing and tested.

IN ABOVE SPACE DESCRIBE PROPOSED PROGRAM; IF PROPOSAL IS TO DEEPEN OR PLUG BACK, GIVE DATA ON PRESENT PRODUCTIVE ZONE AND PROPOSED NEW PRODUCTIVE ZONE. GIVE BLOWOUT PREVENTER PROGRAM, IF ANY.

I hereby certify that the information above is true and complete to the best of my knowledge and belief.

Signed Christina Tomlinson Title Geol. Secty Date 2-24-77

(This space for State Use)

APPROVED BY W. A. Gessert TITLE SUPERVISOR, DISTRICT # DATE FEB 25 1977

Cement must be circulated to surface behind 4 1/2" + 5 1/2" casing

NEW MEXICO OIL CONSERVATION COMMISSION
WELL LOCATION AND ACREAGE DEDICATION PLAT

Fbrn C-102
Supersedes C-128
Effective 1-1-65

All distances must be from the outer boundaries of the Section.

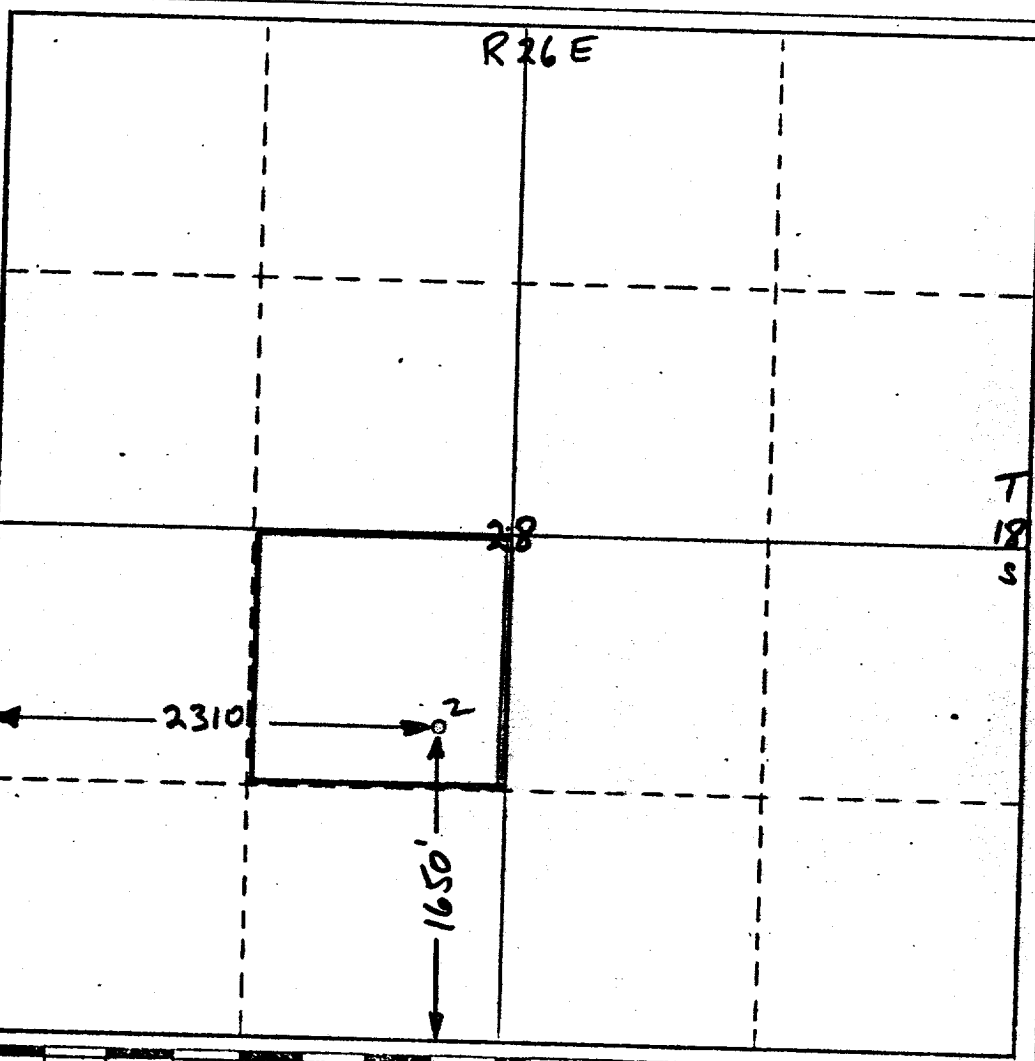
| | | | | |
|--|------------------------------------|-----------------------------|---------------------------------------|-----------------------|
| Operator Yates Petroleum Corp | | Lease Mallard HM | | Well No. 2 |
| Unit Letter K | Section 28 | Township 18-S | Range 26-E | County Eddy |
| Actual Footage Location of Well: 1650 feet from the South line and 2310 feet from the West line | | | | |
| Ground Level Elev. 3387 | Producing Formation Yeso | Pool Undesignated | Dedicated Acreage: 40 Acres | |

1. Outline the acreage dedicated to the subject well by colored pencil or hachure marks on the plat below.
2. If more than one lease is dedicated to the well, outline each and identify the ownership thereof (both as to working interest and royalty).
3. If more than one lease of different ownership is dedicated to the well, have the interests of all owners been consolidated by communitization, unitization, force-pooling, etc?

Yes No If answer is "yes," type of consolidation _____

If answer is "no," list the owners and tract descriptions which have actually been consolidated. (Use reverse side of this form if necessary.) _____

No allowable will be assigned to the well until all interests have been consolidated (by communitization, unitization, forced-pooling, or otherwise) or until a non-standard unit, eliminating such interests, has been approved by the Commission.



CERTIFICATION

I hereby certify that the information contained herein is true and complete to the best of my knowledge and belief.

Eddie L. Heatfield
Name

Position

Company

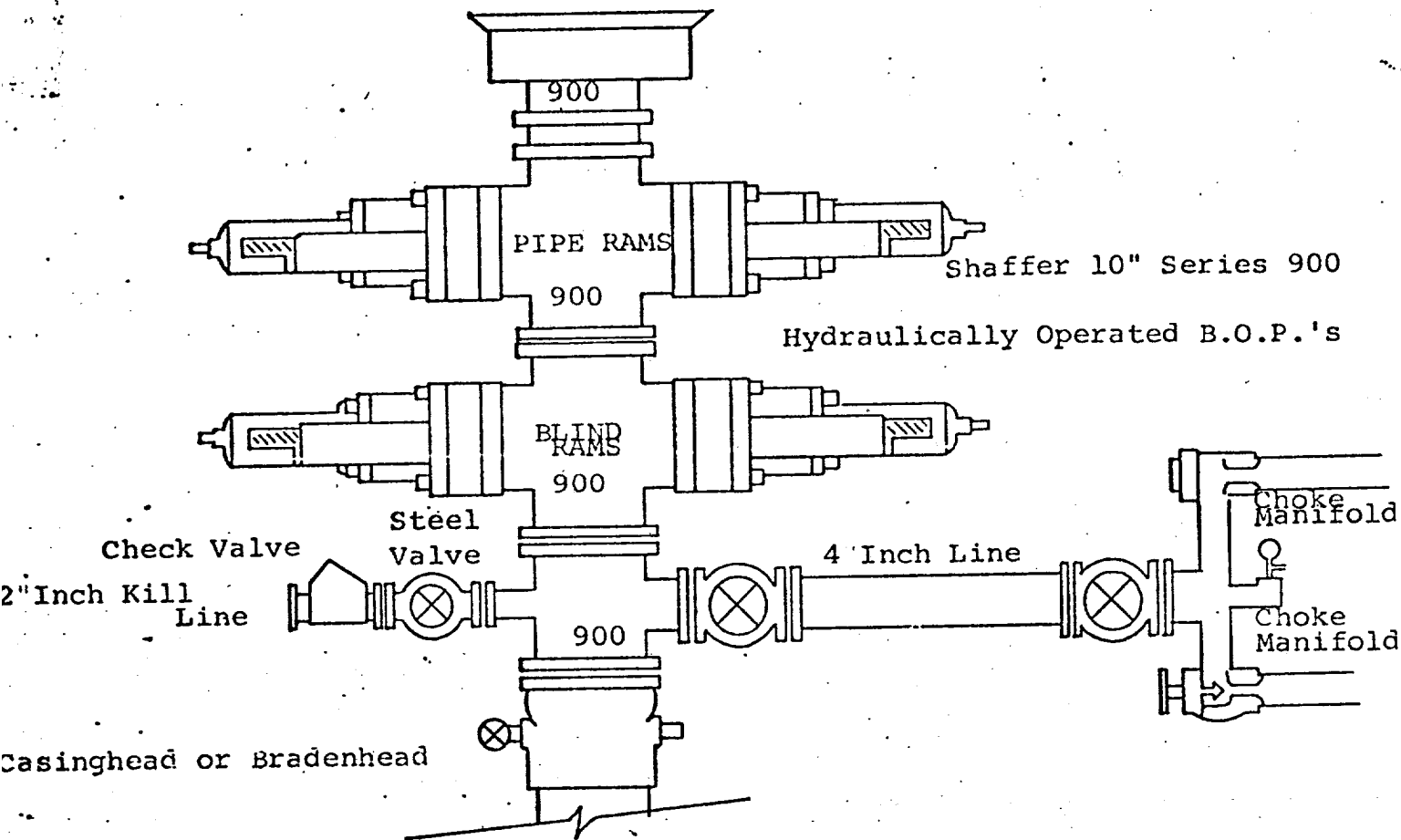
Date
2-23-77

I hereby certify that the well location shown on this plat was plotted from field notes of actual surveys made by me or under my supervision, and that the same is true and correct to the best of my knowledge and belief.

Eddie L. Heatfield
Date Surveyed
2-11-77

Registered Professional Engineer and/or Land Surveyor
5

Certificate No.
4605



THE FOLLOWING CONSTITUTE MINIMUM BLOWOUT PREVENTER REQUIREMENTS

1. All preventers to be hydraulically operated with secondary manual controls installed prior to drilling out from under casing.
2. Choke outlet to be a minimum of 4" diameter.
3. Kill line to be of all steel construction of 2" minimum diameter.
4. All connections from operating manifolds to preventers to be all steel, hole or tube a minimum of one inch in diameter.
5. The available closing pressure shall be at least 15% in excess of that required with sufficient volume to operate the B.O.P.'s.
6. All connections to and from preventer to have a pressure rating equivalent to that of the B.O.P.'s.
7. Inside blowout preventer to be available on rig floor.
8. Operating controls located a safe distance from the rig floor.
9. Hole must be kept filled on trips below intermediate casing. Operator not responsible for blowouts resulting from not keeping hole full.
10. D. P. float must be installed and used below zone of first gas intrusion.