

DISTRICT I
1625 N. French Dr., Hobbs, NM 86240

DISTRICT II
811 South First, Artesia, NM 88210

DISTRICT III
1000 Rio Brazos Rd., Aztec, NM 87410

DISTRICT IV
2040 South Pacheco, Santa Fe, NM 87505

State of New Mexico
Energy, Minerals and Natural Resources Department

Form C-102
Revised March 17, 1999

Submit to Appropriate District Office
State Lease - 4 Copies
Fee Lease - 3 Copies

OIL CONSERVATION DIVISION

2040 South Pacheco
Santa Fe, New Mexico 87504-2088

AMENDED REPORT

WELL LOCATION AND ACREAGE DEDICATION PLAT

API Number 30-015-	Pool Code 83840	Pool Name Undesignated Richard Knob Atoka Morrow
Property Code	Property Name OXY WOOF STATE	Well Number 1
OGRID No. 192463	Operator Name OXY USA WTP LIMITED PARTNERSHIP	Elevation 3687'

Surface Location

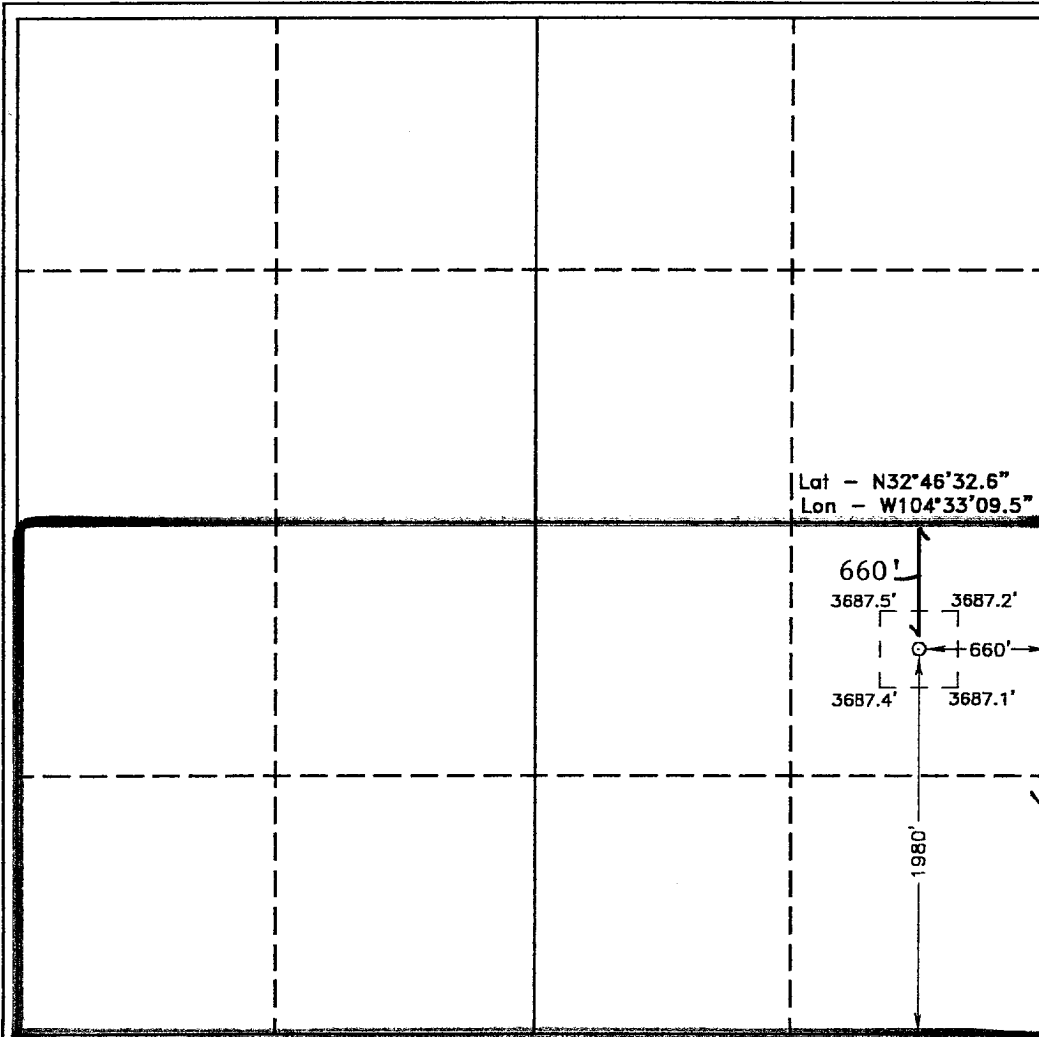
UL or lot No.	Section	Township	Range	Lot Idn	Feet from the	North/South line	Feet from the	East/West line	County
1	2	18 S	24 E		1980	SOUTH	660	EAST	EDDY

Bottom Hole Location if Different From Surface

UL or lot No.	Section	Township	Range	Lot Idn	Feet from the	North/South line	Feet from the	East/West line	County

Dedicated Acres 320	Joint or Infill N	Consolidation Code	Order No.
------------------------	----------------------	--------------------	-----------

NO ALLOWABLE WILL BE ASSIGNED TO THIS COMPLETION UNTIL ALL INTERESTS HAVE BEEN CONSOLIDATED OR A NON-STANDARD UNIT HAS BEEN APPROVED BY THE DIVISION



Lat - N32°46'32.6"
Lon - W104°33'09.5"

OPERATOR CERTIFICATION

I hereby certify the the information contained herein is true and complete to the best of my knowledge and belief.

David Stewart
Signature

David Stewart
Printed Name

Sr. Regulatory Analyst
Title

7/26/01
Date

SURVEYOR CERTIFICATION

I hereby certify that the well location shown on this plat was plotted from field notes of actual surveys made by me or under my supervision, and that the same is true and correct to the best of my belief.

July 2, 2001

Date Surveyed
Signature & Seal of
Professional Surveyor

W.O. No. 1656A
Certificate No. Gary L. Jones 7977
BASIN SURVEYS