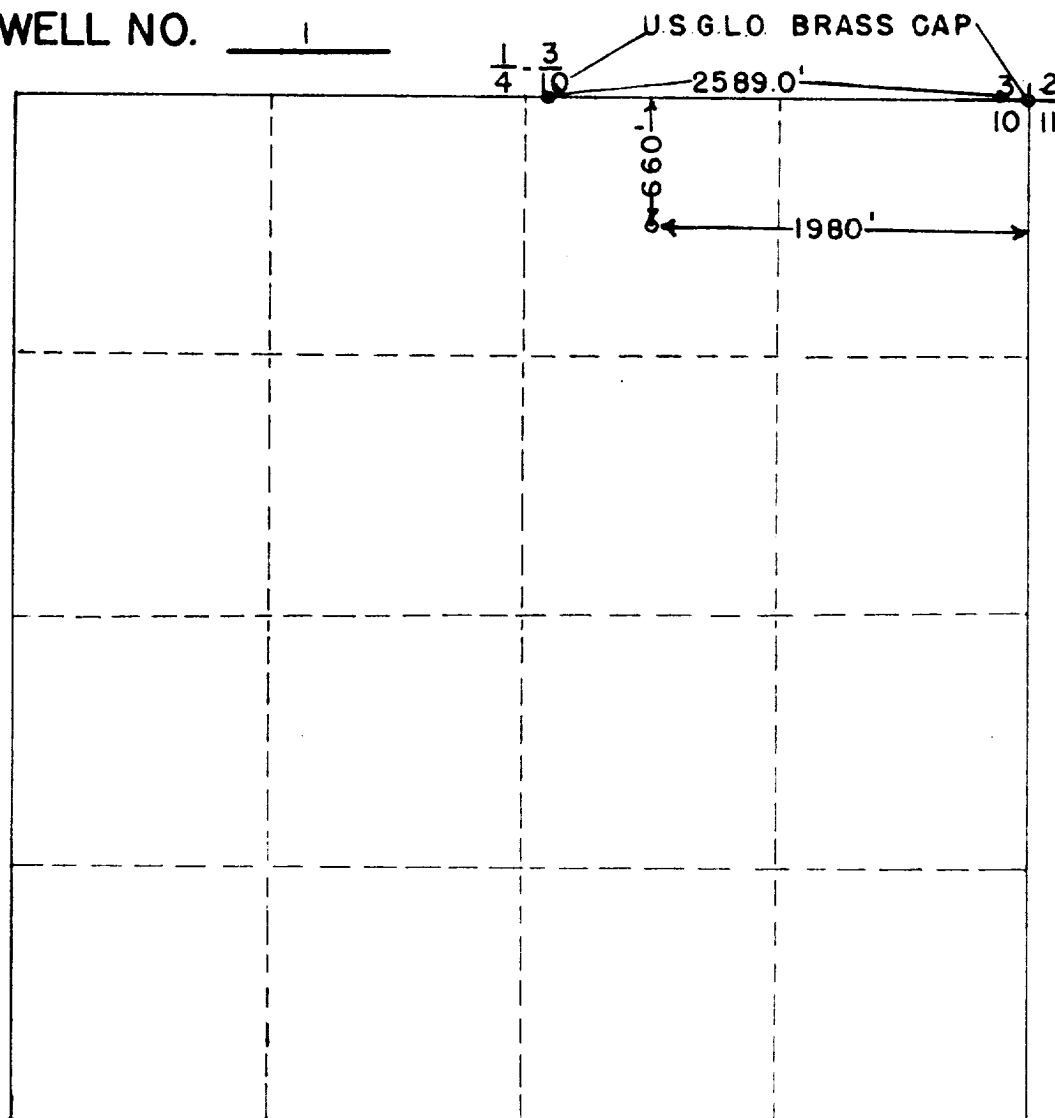


# WELL LOCATION SURVEY PLAT

OPERATOR STANOLIND OIL & GAS CO.

LEASE STATE AD

WELL NO. 1



N

SEC. 10, TWP. 19 S., RGE. 28 E., N.M.P.M.

I HEREBY CERTIFY THAT THIS PLAT WAS MADE  
FROM NOTES TAKEN IN THE FIELD BY ME AND  
THAT THE SAME IS TRUE AND CORRECT TO  
THE BEST OF MY KNOWLEDGE AND BELIEF.

*John W. West*

JOHN W. WEST, PE & LS NO. 676

SEPT. 24, 1953