

NUMBER OF COPIES RECEIVED	
DISTRIBUTION	
SANTA FE	1
FILE	1
U.S.G.S.	1
LAND OFFICE	1
TRANSPORTER	
OIL	
GAS	
PRODUCTION OFFICE	
OPERATOR	1

NEW MEXICO OIL CONSERVATION COMMISSION
WELL LOCATION AND ACREAGE DEDICATION PLAT
 SEE INSTRUCTIONS FOR COMPLETING THIS FORM ON THE REVERSE SIDE

FORM C-128
 Revised 5/1/57

SECTION A

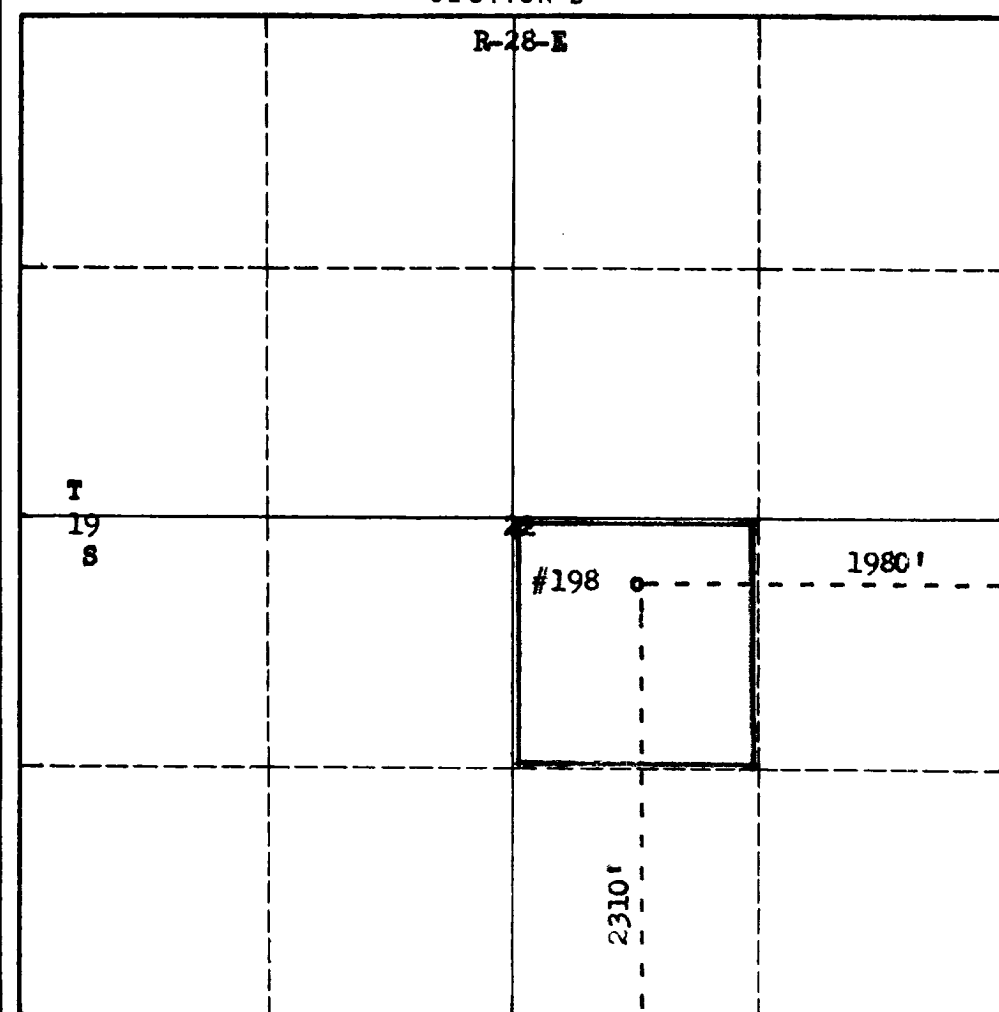
Operator International Oil & Gas Corp.		Lease State 648		Well No. 198	
Unit Letter J	Section 22	Township T-19-S	Range R-28-E	County Eddy	
Actual Footage Location of Well: 2310 feet from the South line and 1980 feet from the East line					
Ground Level Elev. 3395	Producing Formation Queen Grayburg		Pool East Millman Queen Grayburg	Dedicated Acreage: 40 Acres	

1. Is the Operator the only owner in the dedicated acreage outlined on the plat below? YES ☒ NO ☐ . ("Owner" means the person who has the right to drill into and to produce from any pool and to appropriate the production either for himself or for himself and another. (65-3-29 (e) NMSA 1935 Comp.)
2. If the answer to question one is "no," have the interests of all the owners been consolidated by communitization agreement or otherwise? YES ☐ NO ☐ . If answer is "yes," Type of Consolidation _____
3. If the answer to question two is "no," list all the owners and their respective interests below:

Owner	Land Description

RECEIVED
JAN 13 1964

SECTION B



CERTIFICATION
 ARTESIAN ENGINEER

I hereby certify that the information in SECTION A above is true and complete to the best of my knowledge and belief.

Name	James H. Brown
Position	District Engineer
Company	International-Yates
Date	January 13, 1964

I hereby certify that the well location shown on the plat in SECTION B was plotted from field notes of actual surveys made by me or under my supervision, and that the same is true and correct to the best of my knowledge and belief.

Date Surveyed	January 10, 1964
Registered Professional Engineer and/or Land Surveyor	James H. Brown

Certificate No. **542**

0 330 660 990 1320 1650 1980 2310 2640 2000 1500 1000 500 0

INSTRUCTIONS FOR COMPLETION OF FORM C-128

1. Operator shall furnish and certify to the information called for in Section A.
2. Operator shall outline the dedicated acreage for *both* oil and gas wells on the plat in Section B.
3. A registered professional engineer or land surveyor registered in the State of New Mexico or approved by the Commission shall show on the plat the location of the well and certify this information in the space provided.
4. All distances shown on the plat must be from the outer boundaries of the Section.
5. If additional space is needed for listing owners and their respective interests as required in question 3 of Section A, please use space below.