

NEW MEXICO OIL CONSERVATION COMMISSION
Santa Fe, New Mexico

Form C-101
Revised (12/1/55)

NOTICE OF INTENTION TO DRILL

Notice must be given to the District Office of the Oil Conservation Commission and approval obtained before drilling or recompletion begins. If changes in the proposed plan are considered advisable, a copy of this notice showing such changes will be returned to the sender. Submit this notice in QUINTUPLICATE. One copy will be returned following approval. See additional instructions in Rules and Regulations of the Commission. If State Land submit 6 Copies Attach Form C-128 in triplicate to first 3 copies of form C-101

Artesia, New Mexico

(Place)

December 21, 1962

(Date)

RECEIVED

OIL CONSERVATION COMMISSION
SANTA FE, NEW MEXICO

DEC 21 1962

Gentlemen:

You are hereby notified that it is our intention to commence the Drilling of a well to be known as

L. T. Pate

(Company or Operator)

O. C. C.

ARTESIA OFFICE

Monterey State

(Lease)

Well No. 4, in K (Unit) The well is

located 1650 feet from the South line and 2310 feet from the

West line of Section 32, T. 18 South, R. 31 East, NMPM.

(GIVE LOCATION FROM SECTION LINE)

Shugart

Pool, Eddy County

If State Land the Oil and Gas Lease is No.

If patented land the owner is.

Address.

We propose to drill well with drilling equipment as follows: Cable Tools

The status of plugging bond is Blanket Bond of L. T. Pate

Drilling Contractor Kincaid & Watson Drilling Company
Box 498, Artesia, New Mexico

We intend to complete this well in the Yates or Lower Queen formation at an approximate depth of 3700 feet.

CASING PROGRAM

We propose to use the following strings of Casing and to cement them as indicated:

Size of Hole	Size of Casing	Weight per Foot	New or Second Hand	Depth	Sacks Cement
10"	8 5/8"	24	S.H.	800	50
8"	7"	20	S.H.	2700	100
6"	5 1/2"	14	New	3700	100

If changes in the above plans become advisable we will notify you immediately.

ADDITIONAL INFORMATION (If recompletion give full details of proposed plan of work.)

If production is found in the Yates at approximately 2700 we will stop there, if not we intend to drill to the Lower Queen at approximately 3700.

Approved: DEC 21 1962, 19.

Except as follows:

Sincerely yours,

L. T. Pate

(Company or Operator)

By

Position Agent

Send Communications regarding well to

Name Kincaid & Watson Drilling Company

Address Box 498, Artesia, New Mexico

OIL CONSERVATION COMMISSION

By M. L. Armstrong

NUMBER OF COPIES RECEIVED	
DISTRIBUTION	
SANTA FE	
FILE	
U.S.G.S.	
LAND OFFICE	
TRANSPORTER	OIL GAS
PRODUCTION OFFICE	
OPERATOR	

NEW MEXICO OIL CONSERVATION COMMISSION
WELL LOCATION AND ACREAGE DEDICATION PLAT
 SEE INSTRUCTIONS FOR COMPLETING THIS FORM ON THE REVERSE SIDE

FORM C-128
Revised 5/1/57

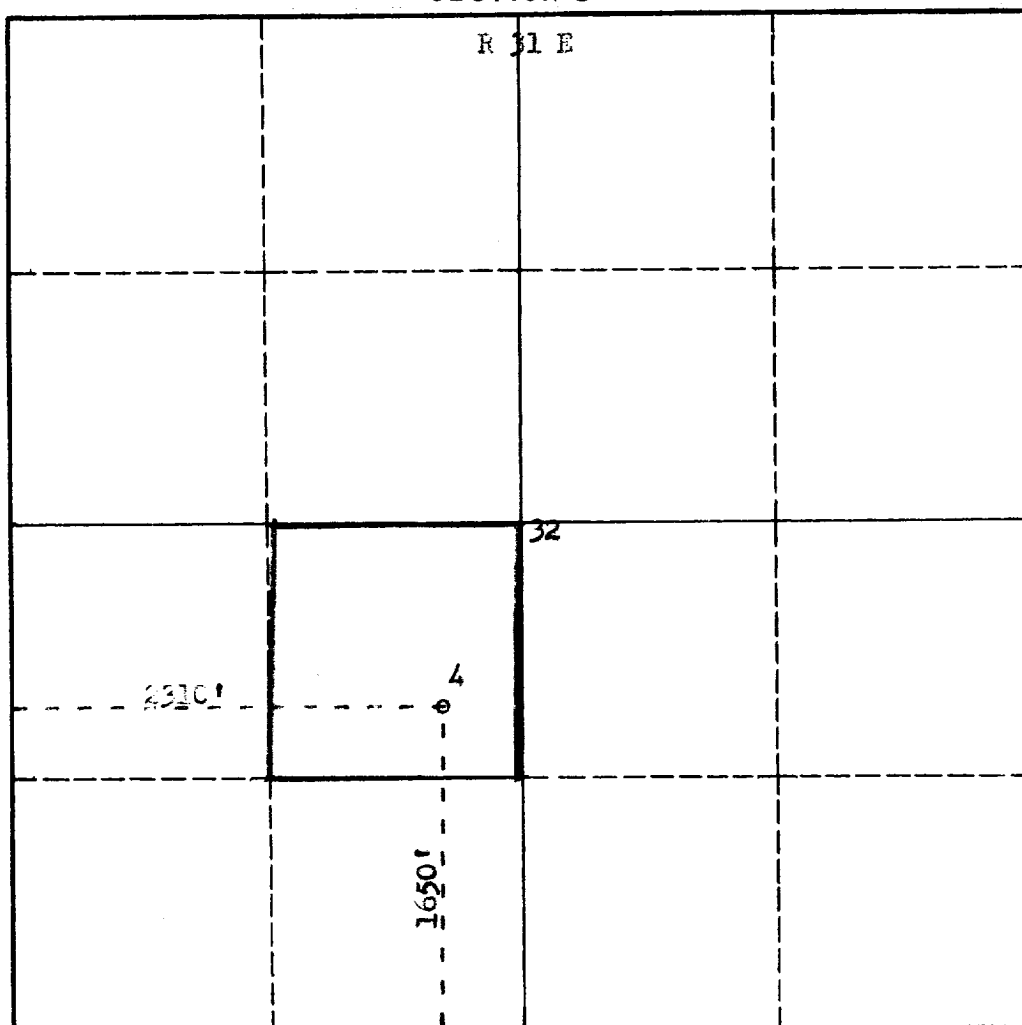
SECTION A

Operator L.T.Pate		Lease Monterey-State		Well No. 4
Unit Letter K	Section 32	Township 10 South	Range 31 East	County Eddy
Actual Footage Location of Well: 1650 feet from the South line and 2310 feet from the West line				
Ground Level Elev. 3571	Producing Formation Lower Queen	Pool Shugart	Dedicated Acreage: 40 Acres	

1. Is the Operator the only owner in the dedicated acreage outlined on the plat below? YES X NO ____ . ("Owner" means the person who has the right to drill into and to produce from any pool and to appropriate the production either for himself or for himself and another. (65-3-29 (e) NMSA 1935 Comp.)
2. If the answer to question one is "no," have the interests of all the owners been consolidated by communitization agreement or otherwise? YES ____ NO ____ . If answer is "yes," Type of Consolidation _____
3. If the answer to question two is "no," list all the owners and their respective interests below:

Owner	Land Description

SECTION B



CERTIFICATION

I hereby certify that the information in SECTION A above is true and complete to the best of my knowledge and belief.

Name
Position Agent
Company L. T. Pate
Date December 21, 1962

I hereby certify that the well location shown on the plat in SECTION B was plotted from field notes of actual surveys made by me or under my supervision, and that the same is true and correct to the best of my knowledge and belief.

Date Surveyed December 19, 1962
Registered Professional Engineer and/or Land Surveyor <i>James H. Brown</i>
Certificate No. N.M.L.S. 10.542

0 330 660 990 1320 1650 1980 2310 2640 2000 1500 1000 500

INSTRUCTIONS FOR COMPLETION OF FORM C-128

1. Operator shall furnish and certify to the information called for in Section A.
2. Operator shall outline the dedicated acreage for *both* oil and gas wells on the plat in Section B.
3. A registered professional engineer or land surveyor registered in the State of New Mexico or approved by the Commission shall show on the plat the location of the well and certify this information in the space provided.
4. All distances shown on the plat must be from the outer boundaries of the Section.
5. If additional space is needed for listing owners and their respective interests as required in question 3 of Section A, please use space below.

OIL COMMISSION	
ARTESIAN WELL	
No. of Wells	7
Acres	
Water	
Gas	
Oil	
Other	
Total	