

NEW MEXICO OIL CONSERVATION COMMISSION
WELL LOCATION AND ACREAGE DEDICATION PLAT

FORM C-128
Revised 5/1/57

SEE INSTRUCTIONS FOR COMPLETING THIS FORM ON THE REVERSE SIDE

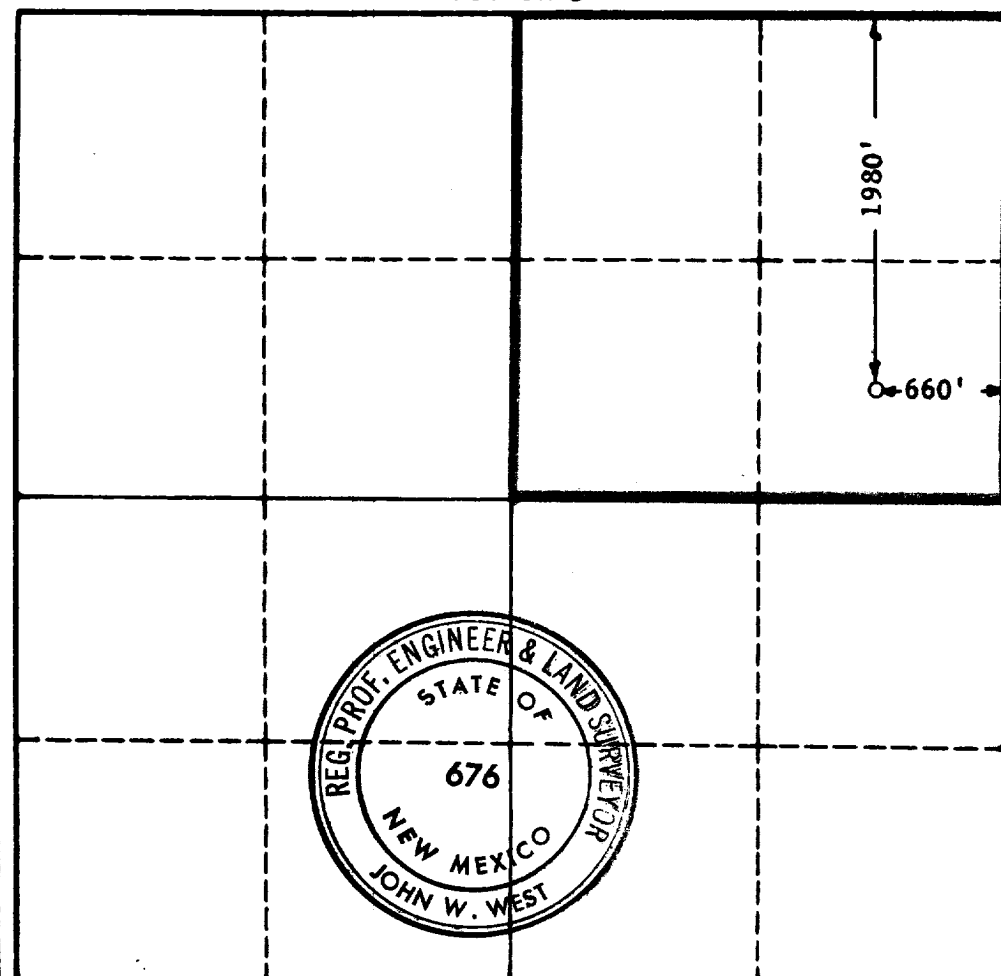
SECTION A

Operator TENNECO OIL COMPANY		Lease JONES FED. "E"		Well No. 1
Unit Letter H	Section 23	Township 19 SOUTH	Range 31 EAST	County EDDY
Actual Postage Location of Well: 1980 feet from the NORTH line and 660 feet from the EAST line				
Ground Level Elev. 3540 Est.	Producing Formation Strawn	Pool Undesignated LUSH	Dedicated Acreage: 160 Acres	

1. Is the Operator the only owner in the dedicated acreage outlined on the plat below? YES ☒ NO ☐ **Strawn** ("Owner" means the person who has the right to drill into and to produce from any pool and to appropriate the production either for himself or for himself and another. (65-3-29 (e) NMSA 1935 Comp.)
2. If the answer to question one is "no," have the interests of all the owners been consolidated by communitization agreement or otherwise? YES ☐ NO ☐ If answer is "yes," Type of Consolidation **RECEIVED**
3. If the answer to question two is "no," list all the owners and their respective interests below:

Owner	Land Description DEC 30 1964
	O. C. C.

SECTION B



ARTESIA, OFFICE
CERTIFICATION

I hereby certify that the information in SECTION A above is true and complete to the best of my knowledge and belief.

Name R. O. Bowers
Position Dist. Office Supervisor
Company Tenneco Oil Company
Date December 28, 1964

I hereby certify that the well location shown on the plat in SECTION B was plotted from field notes of actual surveys made by me or under my supervision, and that the same is true and correct to the best of my knowledge and belief.

Date Surveyed NOV. 7, 1964
Registered Professional Engineer and/or Land Surveyor, JOHN W. WEST
Certificate No. John W. West
N.M. - P.E. & L.S. NO. 676

0 330 660 990 1320 1650 1980 2310 2640 2970 3300 3630

OIL CONSERVATION COMMISSION		
ARTESIA DISTRICT OFFICE		
No. Copies Received 3		
DISTRIBUTION		
	NO. FURNISHED	
OPERATOR		
SANTA FE	1	
PROMOTION CHIEF		
STATE LAND OFFICE		
U. S. G. S.	1	
TRANSPORTER		
FILE	1	
BUREAU OF MINES		