

NUMBER OF COPIES RECEIVED	
DISTRIBUTION	
SANTA FE	1
FILE	2
LAND OFFICE	1
TRANSPORTER	1
OPERATION OFFICE	1
OPERATOR	2

NEW MEXICO OIL CONSERVATION COMMISSION
Santa Fe, New Mexico

Form O-101
Revised (12/1/55)

NOTICE OF INTENTION TO DRILL

Notice must be given to the District Office of the Oil Conservation Commission and approval obtained before drilling or recompletion begins. If changes in the proposed plan are considered advisable, a copy of this notice showing such changes will be returned to the sender. Submit this notice in QUINTUPLICATE. One copy will be returned following approval. See additional instructions in Rules and Regulations of the Commission. If State Land submit 6 Copies Attach Form O-128 in triplicate to first 3 copies of form O-101

(Place)

(Date)

OIL CONSERVATION COMMISSION
SANTA FE, NEW MEXICO

Gentlemen:

You are hereby notified that it is our intention to commence the Drilling of a well to be known as

R. C. Davoust Company

(Company, or Operator)

State N.M.
(Lease)

Well No. 14-X, in E (Unit) The well is

located 2635 feet from the North line and 1325 feet from the

East line of Section 3, T. 19-S, R. 29-E, NMPM.

(GIVE LOCATION FROM SECTION LINE) Turkey Track Pool, Eddy County

If State Land the Oil and Gas Lease is No. B-8949-14

If patented land the owner is

Address

We propose to drill well with drilling equipment as follows: rotary with air

The status of plugging bond is \$10,000 blanket, filed

Drilling Contractor Technical Drilling Service, Inc.

We intend to complete this well in the Queen as a water injection well formation at an approximate depth of 2100 feet.

CASING PROGRAM

We propose to use the following strings of Casing and to cement them as indicated:

Size of Hole	Size of Casing	Weight per Foot	New or Second Hand	Depth	Sacks Cement
9"	7"	20#	Second Hand	400'	to surface
6 1/2"	4 1/2"	9.5#	New	2600' 2250'	back 1500'

If changes in the above plans become advisable we will notify you immediately.

ADDITIONAL INFORMATION (If recompletion give full details of proposed plan of work.)

RECEIVED

APR 6 1964

Approved APR 6 1964, 19.

Except as follows:

Sincerely yours,

R. C. Davoust Company

(Company or Operator)

By

Position Agent

Send Communications regarding well to

Name Wm. E. Fickert

Address 306 Wilkinson-Foster Bldg, Midland

OIL CONSERVATION COMMISSION

By

NUMBER OF COPIES RECEIVED	
DISTRIBUTION	
SANTA FE	
FILE	
U.S.G.S.	
LAND OFFICE	
TRANSPORTER	OIL
	GAS
PRODUCTION OFFICE	
OPERATOR	

NEW MEXICO OIL CONSERVATION COMMISSION
WELL LOCATION AND ACREAGE DEDICATION PLAT
 SEE INSTRUCTIONS FOR COMPLETING THIS FORM ON THE REVERSE SIDE

FORM C-128
 Revised 5/1/57

SECTION A

Operator R. C. Davoust Company			Lease		State NM	Well No. 14-W
Unit Letter F	Section 3	Township T-19-S	Range R-29-E	County Eddy		

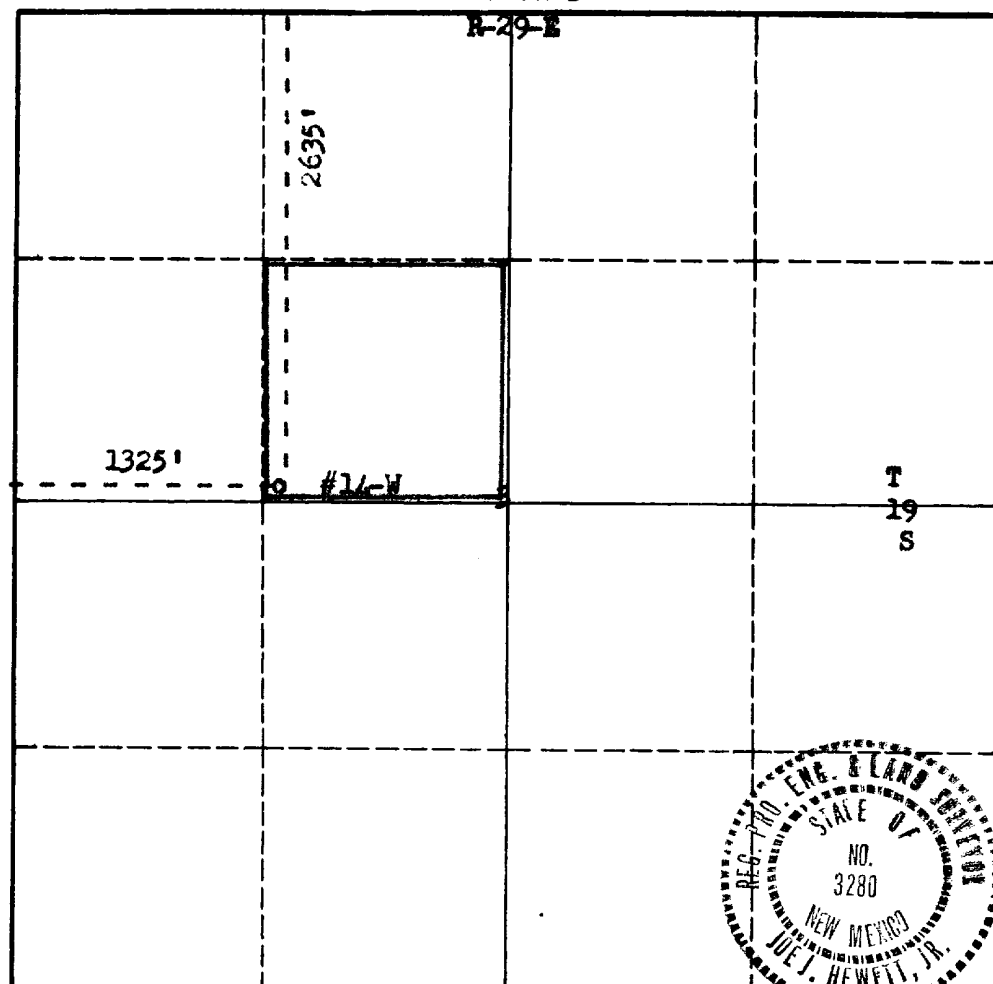
Actual Footage Location of Well:
2635 feet from the **North** line and **1325** feet from the **West** line

Ground Level Elev. 3396	Producing Formation Queen	Pool Turkey Track	Dedicated Acreage: 40 Acres
-----------------------------------	-------------------------------------	-----------------------------	---------------------------------------

1. Is the Operator the only owner in the dedicated acreage outlined on the plat below? YES ☒ NO ☐ . ("Owner" means the person who has the right to drill into and to produce from any pool and to appropriate the production either for himself or for himself and another. (65-3-29 (e) NMSA 1935 Comp.)
2. If the answer to question one is "no," have the interests of all the owners been consolidated by communitization agreement, or otherwise? YES ☐ NO ☐ . If answer is "yes," Type of Consolidation **RECEIVED**
3. If the answer to question two is "no," list all the owners and their respective interests below:

Owner	Land Description	APR 6 1964
		D. C. H. ARTESIA, OFFICE

SECTION B



CERTIFICATION

I hereby certify that the information in SECTION A above is true and complete to the best of my knowledge and belief.

Name <i>Wm. E. Fickett</i>
Position Agent
Company R. C. Davoust Company
Date March 13, 1964

I hereby certify that the well location shown on the plat in SECTION B was plotted from field notes of actual surveys made by me or under my supervision, and that the same is true and correct to the best of my knowledge and belief.

Date Surveyed March 13, 1964
Registered Professional Engineer and/or Land Surveyor <i>Joe J. Hewett, Jr.</i>
Certificate No. 3280

INSTRUCTIONS FOR COMPLETION OF FORM C-128

1. Operator shall furnish and certify to the information called for in Section A.
2. Operator shall outline the dedicated acreage for *both* oil and gas wells on the plat in Section B.
3. A registered professional engineer or land surveyor registered in the State of New Mexico or approved by the Commission shall show on the plat the location of the well and certify this information in the space provided.
4. All distances shown on the plat must be from the outer boundaries of the Section.
5. If additional space is needed for listing owners and their respective interests as required in question 3 of Section A, please use space below.

W-015-10704

Rec'd 5-27-64
(2) Simultaneous Nuclear Logs

Order# R-2671
unearthed at Loc.