

NEW MEXICO OIL CONSERVATION COMMISSION
Santa Fe, New Mexico

Form C-101
Revised (12/1/55)

NOTICE OF INTENTION TO DRILL

Notice must be given to the District Office of the Oil Conservation Commission and approval obtained before drilling or recompletion begins. If changes in the proposed plan are considered advisable, a copy of this notice showing such changes will be returned to the sender. Submit this notice in QUINTUPLICATE. One copy will be returned following approval. See additional instructions in Rules and Regulations of the Commission. If State Land submit 6 Copies Attach Form C- 128 in triplicate to first 3 copies of form C-101

ARTESIA NEW MEXICO
(Place)

6 October 1965
(Date)

OIL CONSERVATION COMMISSION
SANTA FE, NEW MEXICO

Gentlemen:

You are hereby notified that it is our intention to commence the Drilling of a well to be known as EXPLORES 1-4-66

APPROVAL VALID
FOR 90 DAYS UNLESS
DRILLING COMMENCED,

Alma Capitan, Inc.
(Company or Operator)
Ludenberg, Jr.
(Lease), Well No. 1, in J The well is
(Unit)
located 1650 feet from the South line and 1650 feet from the
East line of Section 23, T. 19N, R. 28E, NMPM.
(GIVE LOCATION FROM SECTION LINE) William (Undesignated) Pool, Elly County

D	C	B	A
E	F	G	H
L	K	J X	I
M	N	O	P

If State Land the Oil and Gas Lease is No. 7 - 3136

If patented land the owner is

Address

We propose to drill well with drilling equipment as follows: Cabletools

The status of plugging bond is Set to side

Drilling Contractor W. B. Welch

We intend to complete this well in the Queen - Grayberg
formation at an approximate depth of 2000 feet.

CASING PROGRAM

We propose to use the following strings of Casing and to cement them as indicated:

Size of Hole	Size of Casing	Weight per Foot	New or Second Hand	Depth	Sacks Cement
12"	10"	32	SH	200	4ud
10"	8 5/8"	24	SH	350	100
"	5 1/2"	16	SH	2900	200

If changes in the above plans become advisable we will notify you immediately.

ADDITIONAL INFORMATION (If recompletion give full details of proposed plan of work.)

RECEIVED

OCT 7 1965

Approved OCT 7 1965, 19.....
Except as follows:

Sincerely yours,

Alma Capitan, Inc.
(Company or Operator)
By W. B. Welch

Position Engineer
Send Communications regarding well to
Name W. B. Porter
Box 1343 Artesia, New Mexico

OIL CONSERVATION COMMISSION

By M. L. Armstrong

NEW MEXICO OIL CONSERVATION COMMISSION
WELL LOCATION AND ACREAGE DEDICATION PLAT

Form C-102
Supersedes C-128
Effective 1-1-65

All distances must be from the outer boundaries of the Section.

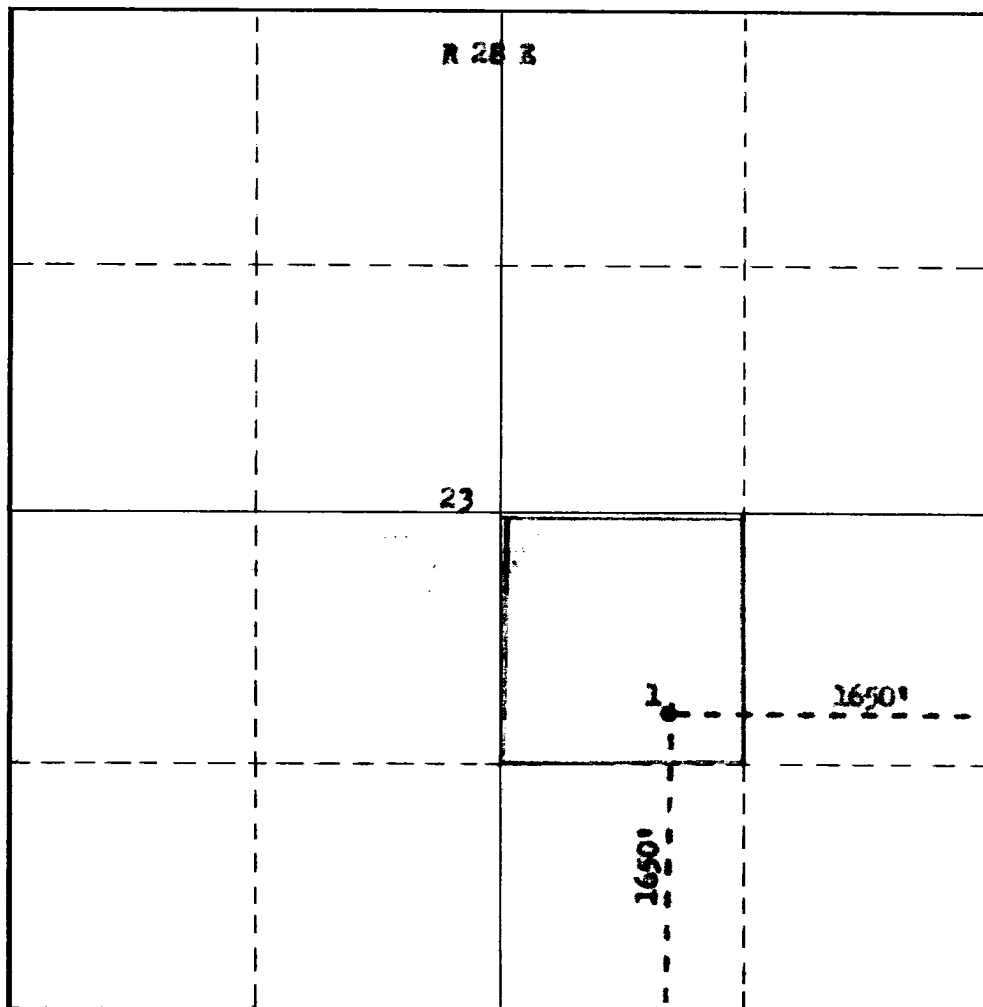
Operator Cline-Capitan, Inc.,		Lease Landenberg		Well No. 1
Unit Letter J	Section 23	Township 19 South	Range 28 East	County Eddy
Actual Footage Location of Well: 1650 feet from the South line and 1650 feet from the East line				
Ground Level Elev. 3350	Producing Formation QUEEN - GRAYBURG	Pool Under Millman	Dedicated Acreage: 40 Acres	

1. Outline the acreage dedicated to the subject well by colored pencil or hachure marks on the plat below.
2. If more than one lease is dedicated to the well, outline each and identify the ownership thereof (both as to working interest and royalty).
3. If more than one lease of different ownership is dedicated to the well, have the interests of all owners been consolidated by communitization, unitization, force-pooling, etc?

RECEIVED

☐ Yes ☐ No If answer is "yes," type of consolidation _____
If answer is "no," list the owners and tract descriptions which have actually been consolidated. (Use reverse side of this form if necessary.)

No allowable will be assigned to the well until all interests have been consolidated (by communitization, unitization, forced-pooling, or otherwise) or until a non-standard unit, eliminating such interests, has been approved by the Commission.



CERTIFICATION

I hereby certify that the information contained herein is true and complete to the best of my knowledge and belief.

Name *W. Cline*
Position *Engineer*
Company *Cline-Capitan, Inc.*
Date *5 Oct 65*

I hereby certify that the well location shown on this plat was plotted from field notes of actual surveys made by me or under my supervision, and that the same is true and correct to the best of my knowledge and belief.

Date Surveyed *October 1, 1965*
Registered Professional Engineer and/or Land Surveyor *JAMES H. BROWN*
Certificate No. _____

N.M.L.S. No. 512

1
19
3

OIL CONSERVATION COMMISSION**ARTESIA DISTRICT OFFICE**No. Copies Received 7**DISTRIBUTION**

	NO. FURNISHED	
OPERATOR	<u>2</u>	
SANTA FE	<u>1</u>	
PRORATION OFFICE		
STATE LAND OFFICE	<u>1</u>	
U. S. G. S.	<u>2</u>	
TRANSPORTER		
FILE	<u>1-</u>	
BUREAU OF MINES		