



**NEW MEXICO OIL CONSERVATION COMMISSION  
WELL LOCATION AND ACREAGE DEDICATION PLAT**

Form C-102  
Supersedes C-128  
Effective 1-1-65

All distances must be from the outer boundaries of the Section.

Operator <b>TEXAS PACIFIC OIL COMPANY</b>			Lease <b>BUCHANAN UNIT Gas Com.</b>		Well No. <b>1</b>
Unit Letter <b>F</b>	Section <b>7</b>	Township <b>20 SOUTH</b>	Range <b>25 EAST</b>	County <b>EDDY</b>	
Actual Footage Location of Well: <b>1650</b> feet from the <b>NORTH</b> line and <b>1650</b> feet from the <b>WEST</b> line					
Ground Level Elev. <b>3530.0</b>	Producing Formation <b>Morrow</b>	Pool <b>Dagger Draw Morrow Draw</b>		Dedicated Acreage <b>640 Acres</b>	

1. Outline the acreage dedicated to the subject well by colored pencil or hachure marks on the plat below.
2. If more than one lease is dedicated to the well, outline each and identify the ownership thereof (both as to working interest and royalty).
3. If more than one lease of different ownership is dedicated to the well, have the interests of all owners been consolidated by communitization, unitization, force-pooling, etc?

**RECEIVED**

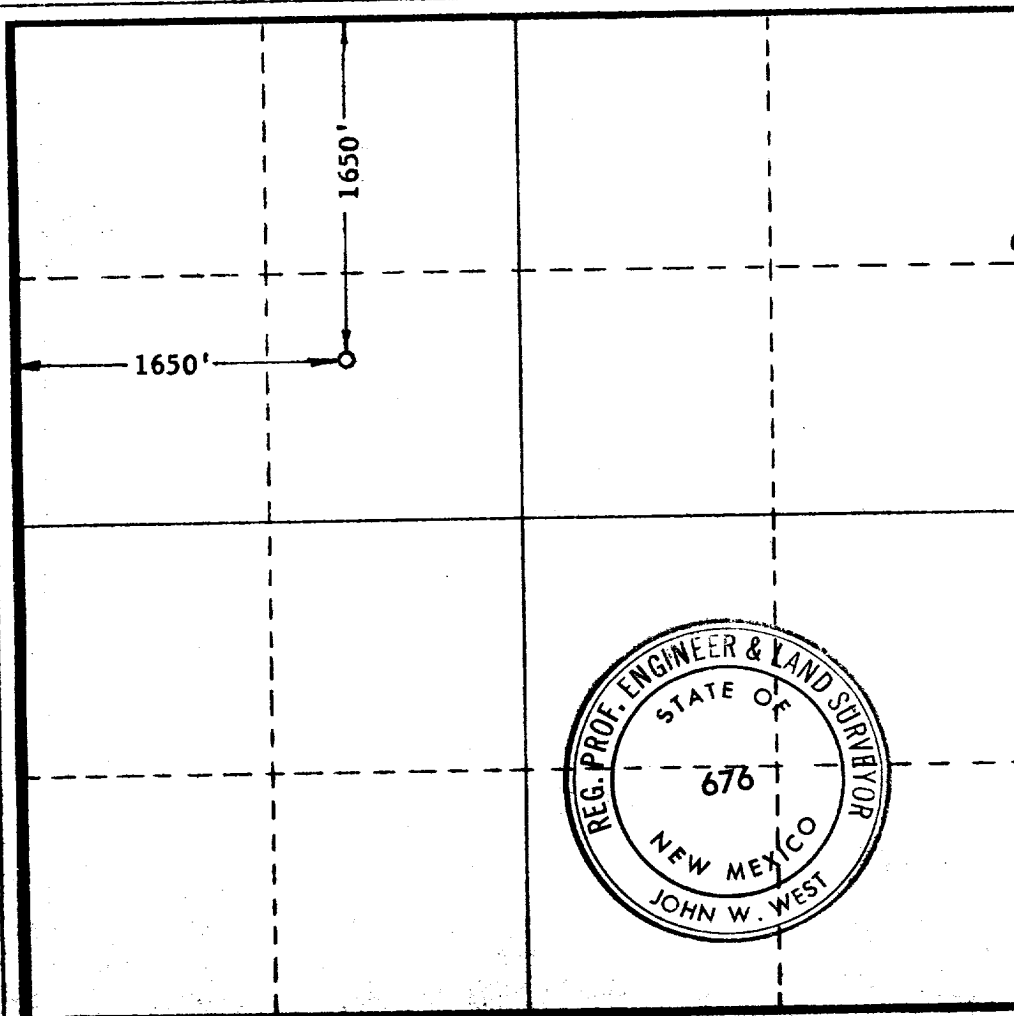
**SEP 8 1966**

☐ Yes ☐ No If answer is "yes," type of consolidation \_\_\_\_\_

If answer is "no," list the owners and tract descriptions which have actually been consolidated (by communitization, unitization, forced-pooling, or otherwise) or until a non-standard unit, eliminating such interests, has been approved by the Commission. \_\_\_\_\_

**O. C. C.**

ARTESIA OFFICE



**CERTIFICATION**

I hereby certify that the information contained herein is true and complete to the best of my knowledge and belief.

Name

**Sheldon Ward**

Position

**Area Superintendent**

Company

**Texas Pacific Oil Company**

Date

**September 7, 1966**

I hereby certify that the well location shown on this plat was plotted from field notes of actual surveys made by me or under my supervision, and that the same is true and correct to the best of my knowledge and belief.

Date Surveyed

**9/3/66**

Registered Professional Engineer and/or Land Surveyor

**John W. West**

Certificate No.

**676**

0 200 400 600 800 1000 1200 1400 1600 1800 2000 2200 2400 2600 2800 3000

September 8, 1966

Texas Pacific Oil Company  
P. O. Box 1069  
Hobbs, New Mexico

Attention: Mr. Sheldon Ward

Re: #1 Buchanan Gas Com SE NW  
7-20S-25E, Eddy County,  
New Mexico

Dear Mr. Ward:

Enclosed are your approved copies of Form C-101 Notice of Intention to Drill on the above captioned well. However, since more than one lease is dedicated to this well, it will be necessary to comply with items #2 & 3 checked in red on the enclosed Forms C-102 and return 3 copies to this office.

Very truly yours,

OIL CONSERVATION COMMISSION

W. A. Gressett

WAG/bh  
Enc.

1. 1941

2. 1942

3. 1943

4. 1944

5. 1945

6. 1946

7. 1947

8. 1948

9. 1949

10. 1950

11. 1951