

30-CVS-70203

UNITED STATES  
DEPARTMENT OF THE INTERIOR  
GEOLOGICAL SURVEY

## APPLICATION FOR PERMIT TO DRILL, DEEPEN, OR PLUG BACK

## 1a. TYPE OF WORK

DRILL ☐DEEPEN ☒PLUG BACK ☐

## b. TYPE OF WELL

OIL  
WELL ☐GAS  
WELL ☒OTHER RE-ENTRYMULTI-  
ZONE ☒MULTI-  
ZONE ☐

## 2. NAME OF OPERATOR

Yates Petroleum Corporation

JUN 18 1976

## 3. ADDRESS OF OPERATOR

207 South Fourth Street, Artesia, NM 88210

## 4. LOCATION OF WELL (Report location clearly and in accordance with any State requirements.)

At surface

1830' FSL &amp; 1980' FEL of Sec. 8-20S-24E

At proposed prod. zone

## 14. DISTANCE IN MILES AND DIRECTION FROM NEAREST TOWN OR POST OFFICE\*

14 miles WSW of Lakewood

## 15. DISTANCE FROM PROPOSED\*

LOCATION TO NEAREST  
PROPERTY OR LEASE LINE, FT.  
(Also to nearest drlg. unit line, if any)

1830'

## 16. NO. OF ACRES IN LEASE

17. NO. OF ACRES ASSIGNED  
TO THIS WELL

320

18. DISTANCE FROM PROPOSED LOCATION\*  
TO NEAREST WELL, DRILLING, COMPLETED,  
OR APPLIED FOR, ON THIS LEASE, FT.

## 19. PROPOSED DEPTH

9300

## 20. ROTARY OR CABLE TOOLS

Rotary

## 21. ELEVATIONS (Show whether DF, RT, GR, etc.)

3840' GR

## 22. APPROX. DATE WORK WILL START\*

June 26, 1976

## 23.

## PROPOSED CASING AND CEMENTING PROGRAM

SIZE OF HOLE	SIZE OF CASING	WEIGHT PER FOOT	SETTING DEPTH	QUANTITY OF CEMENT
	9-5/8"	32.75#	898	300 sacks
8-3/4"	5-1/2"	15.5-17#	TD	

Proposed to re-enter old hole drilled by Gulf Oil Corp., P & A 3-31-69. Original TD was 9054 in Morrow formation, propose to deepen to Mississippi Ls and re-evaluate. If commercial, will run 5½" casing, perforate and stimulate as needed for production

MUD PROGRAM: Will drill plugs with water, displace old hole with KCL-Flosal-Drispak mud & drill new hole with same.

BOP PROGRAM: BOP's & hydril will be installed & tested prior to drilling plugs.

Gas not committed.

IN ABOVE SPACE DESCRIBE PROPOSED PROGRAM. If proposal is to deepen or plug back, give data on present productive zone and proposed new productive zone. If proposal is to drill or deepen directionally, give pertinent data on subsurface locations and measured and true vertical depths. Give blowout preventer program, if any.

## 24.

SIGNED

*Christine Tomlinson*

TITLE

Geol. Secty.

DATE

6-14-76

(This space for Federal or State office use)

PERMIT NO.

APPROVAL DATE

APPROVED BY

THIS APPROVAL IS RESCINDED IF OPERATIONS  
ARE NOT COMMENCED WITHIN 3 MONTHS.  
EXPIRES SEP 17 1976

DATE

\*See Instructions On Reverse Side

NEW MEXICO OIL CONSERVATION COMMISSION  
WELL LOCATION AND ACREAGE DEDICATION PLAT

Form C-102  
Supersedes C-128  
Effective 1-1-65

All distances must be from the outer boundaries of the Section.

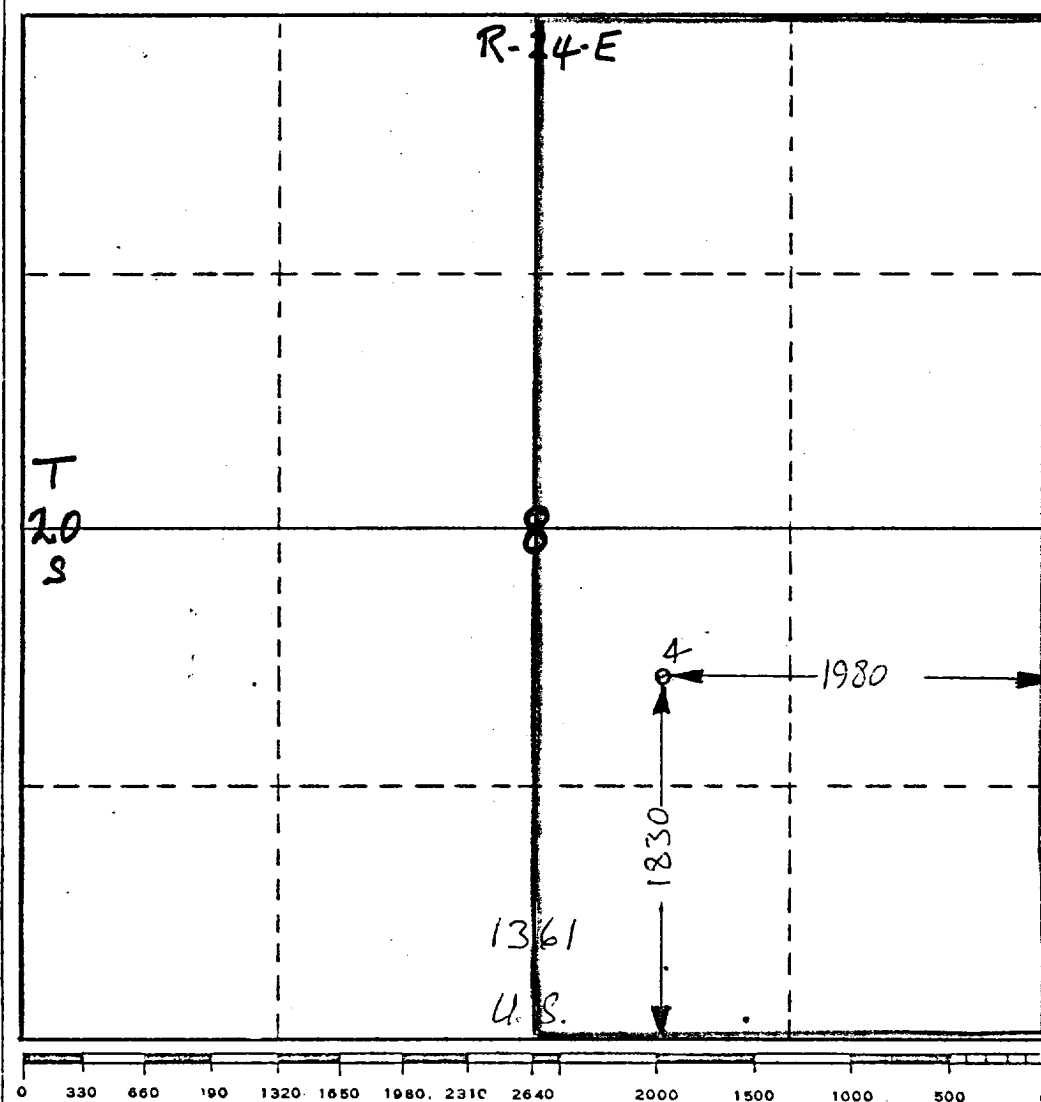
Operator <i>Yates Petroleum Corp</i>		Lease <i>C.C. Tank Unit <del>XXXXXX</del></i>		Well No. <i>4</i>	
Unit Letter <i>J</i>	Section <i>8</i>	Township <i>20-S</i>	Range <i>24-E</i>	County <i>Eddy</i>	
Actual Footage Location of Well: <i>1830</i> feet from the <i>South</i> line and <i>1980</i> feet from the <i>East</i> line					
Ground Level Elev. <i>3840 GR</i>	Producing Formation <i>Morrow</i>		Pool <i>Wildcat</i>	Dedicated Acreage: <i>320</i> Acres	

1. Outline the acreage dedicated to the subject well by colored pencil or hatchure marks on the plat below.
2. If more than one lease is dedicated to the well, outline each and identify the ownership thereof (both as to working interest and royalty).
3. If more than one lease of different ownership is dedicated to the well, have the interests of all owners been consolidated by communitization, unitization, force-pooling, etc?

☐ Yes ☐ No If answer is "yes," type of consolidation \_\_\_\_\_

If answer is "no," list the owners and tract descriptions which have actually been consolidated. (Use reverse side of this form if necessary.) \_\_\_\_\_

No allowable will be assigned to the well until all interests have been consolidated (by communitization, unitization, forced-pooling, or otherwise) or until a non-standard unit, eliminating such interests, has been approved by the Commission.



CERTIFICATION

I hereby certify that the information contained herein is true and complete to the best of my knowledge and belief.

*Eddie M. Mahfood*

Name

Eddie M. Mahfood

Position

Engineer

Company

Yates Petroleum Corp.

Date

June 14, 1976

I hereby certify that the well location shown on this plat was plotted from field notes of actual surveys made by me or under my supervision, and that the same is true and correct to the best of my knowledge and belief.

RECEIVED

JUN 14 1976

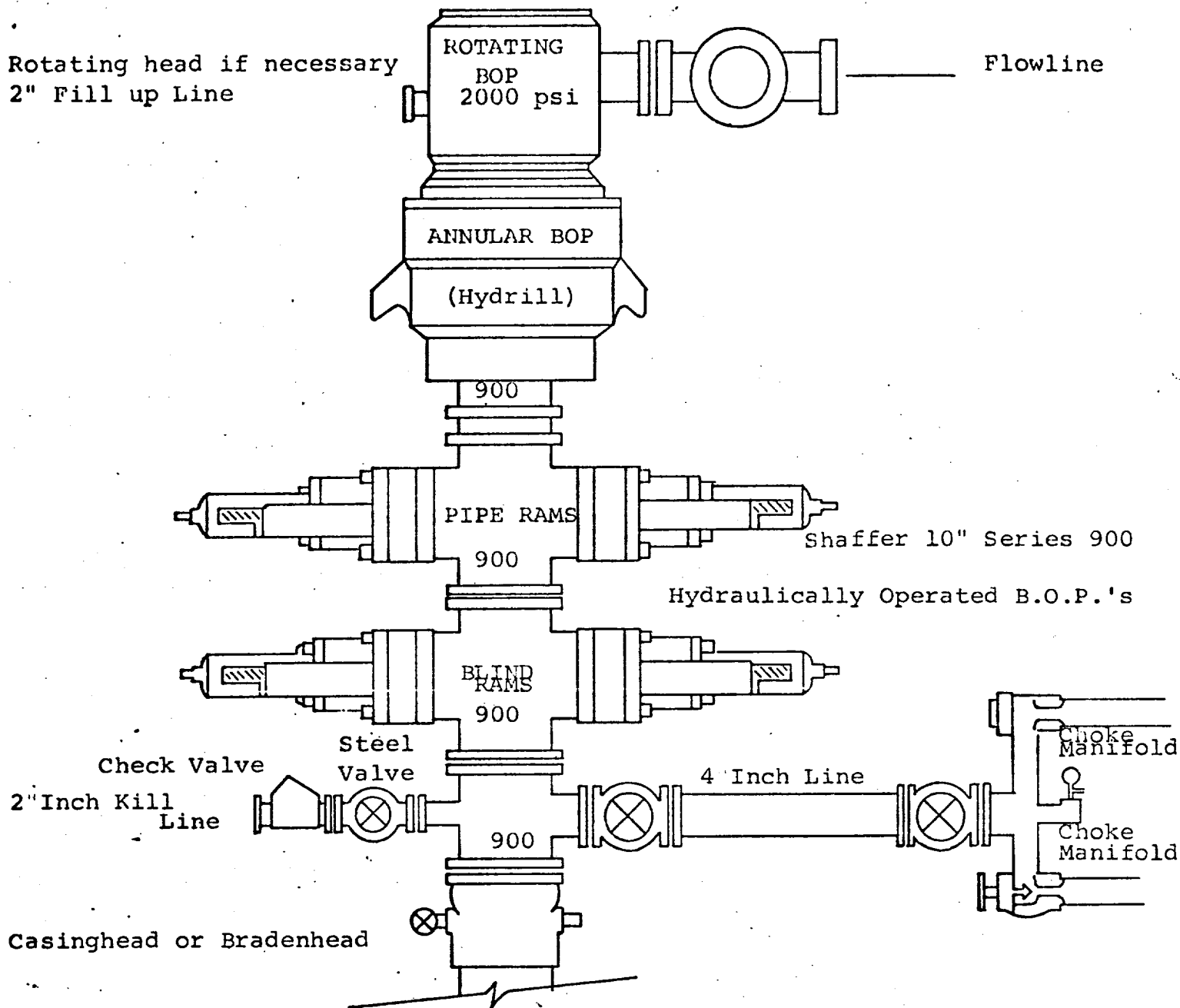
ARTESIA, NEW MEXICO  
Previously Gulf Oil Corp -  
Powers Federal A-1

Date Surveyed

Refer to Original Plat

Registered Professional Engineer  
and/or Land Surveyor

Certificate No.



THE FOLLOWING CONSTITUTE MINIMUM BLOWOUT PREVENTER REQUIREMENTS

1. All preventers to be hydraulically operated with secondary manual controls installed prior to drilling out from under casing.
2. Choke outlet to be a minimum of 4" diameter.
3. Kill line to be of all steel construction of 2" minimum diameter.
4. All connections from operating manifolds to preventers to be all steel, hole or tube a minimum of one inch in diameter.
5. The available closing pressure shall be at least 15% in excess of that required with sufficient volume to operate the B.O.P.'s.
6. All connections to and from preventer to have a pressure rating equivalent to that of the B.O.P.'s.
7. Inside blowout preventer to be available on rig floor.
8. Operating controls located a safe distance from the rig floor.
9. Hole must be kept filled on trips below intermediate casing. Operator not responsible for blowouts resulting from not keeping hole full.
10. D. P. float must be installed and used below zone of first gas intrusion.