

UNITED STATES  
DEPARTMENT OF THE INTERIOR  
GEOLOGICAL SURVEY

30-015-20582

## APPLICATION FOR PERMIT TO DRILL, DEEPEN, OR PLUG BACK

## 1a. TYPE OF WORK

DRILL ☒DEEPEN ☐PLUG BACK ☐

## b. TYPE OF WELL

OIL  
WELL ☐GAS  
WELL ☒

OTHER

SINGLE  
ZONE ☒MULTIPLE  
ZONE ☐

## 2. NAME OF OPERATOR

Yates Petroleum Corporation

## 3. ADDRESS OF OPERATOR

207 South 4th Street - Artesia, New Mexico 88210

## 4. LOCATION OF WELL (Report location clearly and in accordance with any State requirements.)\*

At surface 1980' FSL &amp; 1980' FEL of Sec. 6-19S-25E

At proposed prod. zone  
Same

## 14. DISTANCE IN MILES AND DIRECTION FROM NEAREST TOWN OR POST OFFICE\*

Approx. 10 miles SW of Dayton, NM

## 15. DISTANCE FROM PROPOSED\*

LOCATION TO NEAREST  
PROPERTY OR LEASE LINE, FT.  
(Also to nearest drlg. unit line, if any)

660'

## 16. NO. OF ACRES IN LEASE

320

17. NO. OF ACRES ASSIGNED  
TO THIS WELL

## 18. DISTANCE FROM PROPOSED LOCATION\*

TO NEAREST WELL, DRILLING, COMPLETED,  
OR APPLIED FOR, ON THIS LEASE, FT.

4400'

## 19. PROPOSED DEPTH

Approx. 1500'

## 20. ROTARY OR CABLE TOOLS

Rotary

## 21. ELEVATIONS (Show whether DF, RT, GR, etc.)

3617' GL

## 22. APPROX. DATE WORK WILL START\*

3-1-72

## 23.

## PROPOSED CASING AND CEMENTING PROGRAM

SIZE OF HOLE	SIZE OF CASING	WEIGHT PER FOOT	SETTING DEPTH	QUANTITY OF CEMENT
9 7/8"	7" OD	20#	1000' (Approx.)	Circulate
6 1/2"	4 1/2" & 5 1/2"	9.5# & 15.5#	1500'	Circulate

Propose to test the San Andres formation. If productive, will run a tapered string of 4 1/2" and 5 1/2" casing and cement to surface. (if necessary we will spud 15" hole and run 10 3/4" casing to approx. 100' to restrain surface gravel).

Designation of Operator is pending and will be submitted as soon as received.

RECEIVED

FEB 28 1972

IN ABOVE SPACE DESCRIBE PROPOSED PROGRAM: If proposal is to deepen or plug back, give data on present productive zone and proposed new productive zone. If proposal is to drill or deepen directionally, give pertinent data on subsurface locations and measured and true vertical depths. Give blowout preventer program, if any.

## 24.

SIGNED

TITLE

Engineer

DATE

2-24-72

(This space for Federal or State office use)

PERMIT NO.

APPROVAL DATE

FEB 25 1972

APPROVED BY

TITLE

DISTRICT ENGINEER

DATE

FEB 25 1972

CONDITIONS OF APPROVAL, IF ANY:

DECLARED WATER BASIN

CEMENT BEHIND THE 7" & 4 1/2"  
CASING MUST BE CIRCULATED

\*See Instructions On Reverse Side

NOTIFY USGS IN SUFFICIENT TIME TO  
WITNESS CEMENTING OF CASING.

**MEXICO OIL CONSERVATION COMMISS**  
**WELL LOCATION AND ACREAGE DEDICATION PLAT**

Form C-102  
 Supersedes C-128  
 Effective 1-1-65

All distances must be from the outer boundaries of the Section.

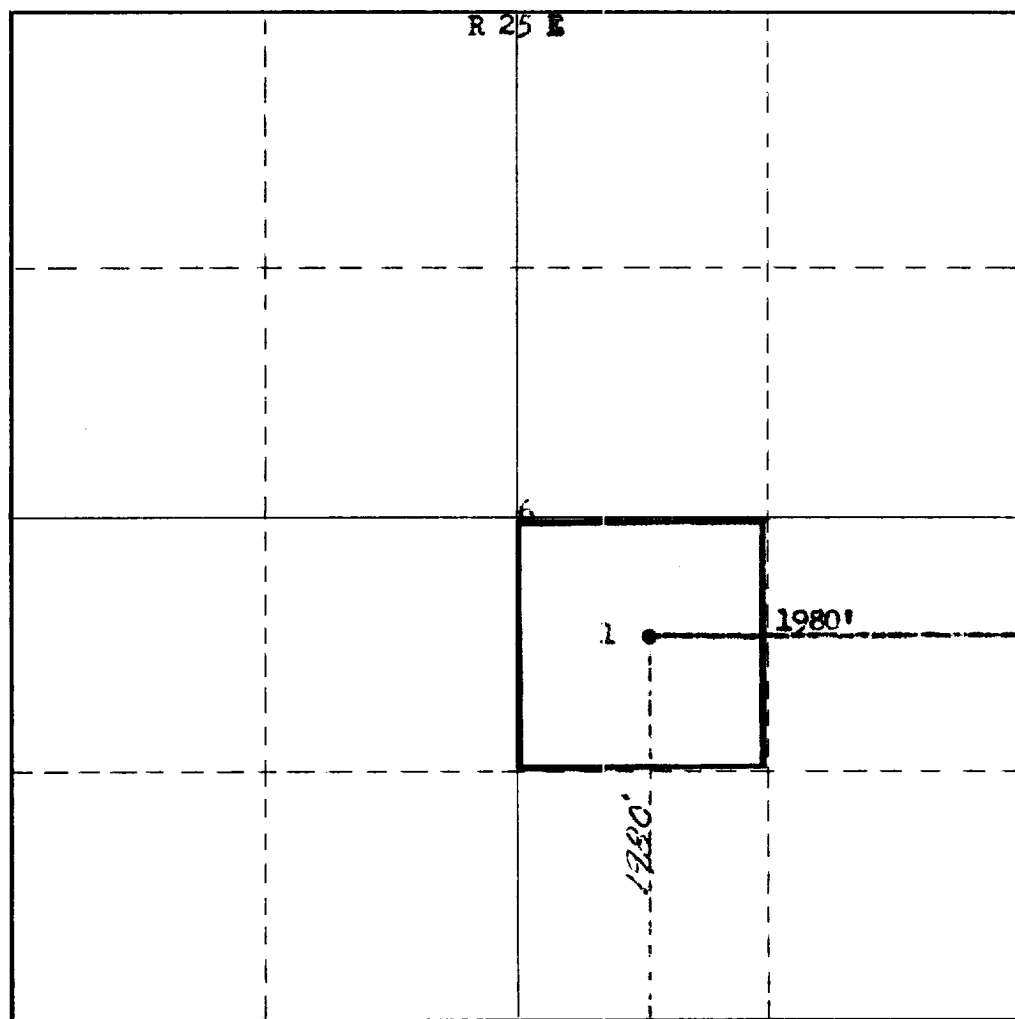
Operator <b>YATES PETROLEUM CORPORATION</b>			Lease <b>MOBIL FEDERAL "C"</b>		Well No. <b>1</b>
Unit Letter <b>J</b>	Section <b>6</b>	Township <b>19 South</b>	Range <b>25 East</b>	County <b>Eddy</b>	
Actual Footage Location of Well: <b>1980</b> feet from the <b>South</b> line and <b>1980</b> feet from the <b>East</b> line					
Ground Level Elev. <b>3617</b>	Producing Formation <b>San Andres</b>		Pool <b>Penasco Draw</b>		Dedicated Acreage: <b>1.40</b> Acres

1. Outline the acreage dedicated to the subject well by colored pencil or hachure marks on the plat below.
2. If more than one lease is dedicated to the well, outline each and identify the ownership thereof (both as to working interest and royalty).
3. If more than one lease of different ownership is dedicated to the well, have the interests of all owners been consolidated by communitization, unitization, force-pooling, etc?

☐ Yes    ☐ No    If answer is "yes," type of consolidation \_\_\_\_\_

If answer is "no," list the owners and tract descriptions which have actually been consolidated. (Use reverse side of this form if necessary.) \_\_\_\_\_

No allowable will be assigned to the well until all interests have been consolidated (by communitization, unitization, forced-pooling, or otherwise) or until a non-standard unit, eliminating such interests, has been approved by the Commission.



**CERTIFICATION**

I hereby certify that the information contained herein is true and complete to the best of my knowledge and belief.

*Eddie M. Mahfood*

Name  
**Eddie M. Mahfood**

Position  
**Engineer**

Company  
**Yates Petroleum Corp.**

Date  
**2-24-72**

I hereby certify that the well location shown on this plat was plotted from field notes of actual surveys made by me or under my supervision, and that the same is true and correct to the best of my knowledge and belief.

Date Surveyed  
**February 22nd, 1972**

Registered Professional Engineer  
 and/or Land Surveyor

*James H. Brown*

Certificate No. **542**

T  
19  
S