

NEW MEXICO OIL CONSERVATION COMMISSION
WELL LOCATION AND ACREAGE DEDICATION PLAT

Copy to SF
Form C-102
Supersedes C-128
Effective 1-1-65

All distances must be from the outer boundaries of the Section.

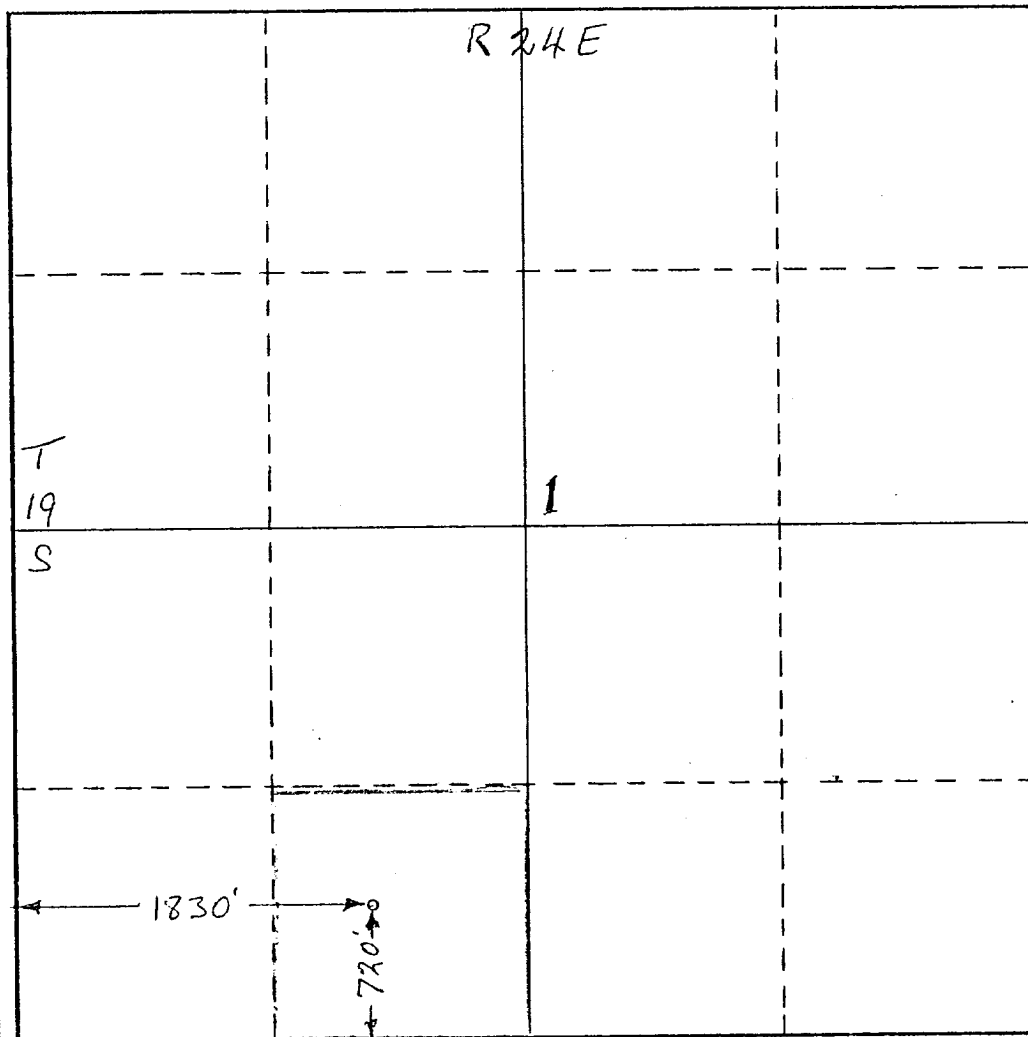
Operator Yates Petroleum Corporation			Lease Federal "CW"		Well No. 1
Unit Letter N	Section 1	Township 19S	Range 24E	County Eddy	
Actual Footage Location of Well: 1830 feet from the West line and 720 feet from the South line					
Ground Level Elev. 3676	Producing Formation Abo	Pool Wildcat	Dedicated Acreage: 40 Acres		

1. Outline the acreage dedicated to the subject well by colored pencil or hachure marks on the plat below.
2. If more than one lease is dedicated to the well, outline each and identify the ownership thereof (both as to working interest and royalty).
3. If more than one lease of different ownership is dedicated to the well, have the interests of all owners been consolidated by communitization, unitization, force-pooling, etc?

☐ Yes ☐ No If answer is "yes," type of consolidation APR 22 1974

If answer is "no," list the owners and tract descriptions which have actually been consolidated. (Use reverse side of this form if necessary.) ARTESIA, OFFICE

No allowable will be assigned to the well until all interests have been consolidated (by communitization, unitization, forced-pooling, or otherwise) or until a non-standard unit, eliminating such interests, has been approved by the Commission.



CERTIFICATION

I hereby certify that the information contained herein is true and complete to the best of my knowledge and belief.

Eddie M. Mahfood

Name
Eddie M. Mahfood
Position
Engineer
Company
Yates Pet. Corp
Date
4-19-74

RECEIVED
APR 19 1974
I hereby certify that the well location shown on the plat was plotted from field notes of actual surveys made by me or under my supervision, and that the same is true and correct to the best of my knowledge and belief.
D. S. GEOLOGICAL SURVEY
ARTESIA, NEW MEXICO

Date Surveyed
Registered Professional Engineer and/or Land Surveyor

Certificate No.