

NEW MEXICO OIL CONSERVATION COMMISSION
WELL LOCATION AND ACREAGE DEDICATION PLAT

Form C-102
Supersedes C-128
Effective 1-4-65

All distances must be from the outer boundaries of the Section.

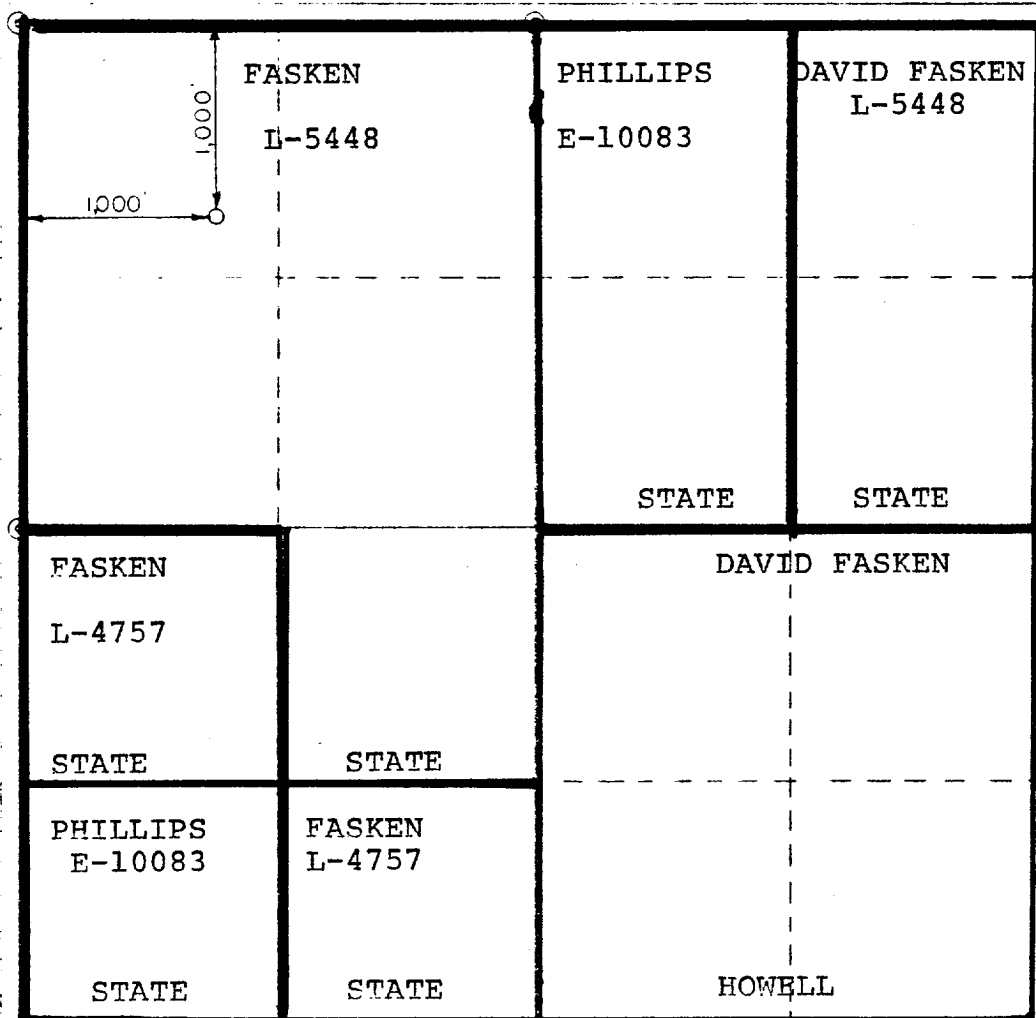
DAVID FASKEN			Lease STATE "32" Corn		Well No. 1
D	Section 32	Township 20 South	Range 25 East	County Eddy	
1000 feet from the North line and 1000 feet from the West line					
3622'	Producing Formation Morrow	Pool Undesignated	Dedicated Acreage: 640 Acres		

- Outline the acreage dedicated to the subject well by colored pencil or hachure marks on the plat below.
- If more than one lease is dedicated to the well, outline each and identify the ownership thereof (both as to working interest and royalty).
- If more than one lease of different ownership is dedicated to the well, have the interests of all owners been consolidated by communitization, unitization, force-pooling, etc?

☒ Yes ☐ No If answer is "yes" type of consolidation Communitization

If answer is "no," list the owners and tract descriptions which have actually been consolidated. (Use reverse side of this form if necessary.)

If this well will be assigned to the well until all interests have been consolidated (by communitization, unitization, force-pooling, or otherwise) or until a non-standard unit, eliminating such interests, has been approved by the Commission.



CERTIFICATION

I hereby certify that the information contained herein is true and complete to the best of my knowledge and belief.

James B. Henry
Name

James B. Henry

Position Agent

Company David Fasken

Date November 29, 1973

I hereby certify that the well location shown on this plat was plotted from field notes of actual surveys made by me or under my supervision, and that the same is true and correct to the best of my knowledge and belief.

Date Surveyed October 10, 1973

Registered Professional Engineer and/or Land Surveyor

John W. Stearn

Certificate No. 1559

650 90 1320 1650 1980 2310 2640 2000 1500 1000 500 0