

UNITED STATES
DEPARTMENT OF THE INTERIOR
GEOLOGICAL SURVEY

30-015-21273

APPLICATION FOR PERMIT TO DRILL, DEEPEN, OR PLUG BACK

1a. TYPE OF WORK
DRILL ☒ DEEPEN ☐ PLUG BACK ☐

b. TYPE OF WELL
OIL WELL ☒ GAS WELL ☐ OTHER ☐ SINGLE ZONE ☐ MULTIPLE ZONE ☐

2. NAME OF OPERATOR

WESTALL - MASK

3. ADDRESS OF OPERATOR

DRAWER 1477, ROSWELL NM 88201

4. LOCATION OF WELL (Report location clearly and in accordance with any State requirements.*)

At surface

330' FROM SOUTH LINE AND 990' FROM WEST LINE

At proposed prod. zone

14. DISTANCE IN MILES AND DIRECTION FROM NEAREST TOWN OR POST OFFICE*

15. DISTANCE FROM PROPOSED*

LOCATION TO NEAREST PROPERTY OR LEASE LINE, FT.
(Also to nearest drlg. unit line, if any)

330'

16. NO. OF ACRES IN LEASE

120

17. NO. OF ACRES ASSIGNED TO THIS WELL

40

18. DISTANCE FROM PROPOSED LOCATION*

TO NEAREST WELL, DRILLING, COMPLETED, OR APPLIED FOR, ON THIS LEASE, FT.

1320

19. PROPOSED DEPTH

3600

20. ROTARY OR CABLE TOOLS

ROTARY

21. ELEVATIONS (Show whether DF, RT, GR, etc.)

3623 GR

22. APPROX. DATE WORK WILL START*

23. PROPOSED CASING AND CEMENTING PROGRAM

SIZE OF HOLE	SIZE OF CASING	WEIGHT PER FOOT	SETTING DEPTH	QUANTITY OF CEMENT
11"	8 5/8	20#	650	APPROX 225 SCKS TO CIRC.
7 7/8	5 1/2	9.5	APPROX 3600	225 SCKS

IN ABOVE SPACE DESCRIBE PROPOSED PROGRAM: If proposal is to deepen or plug back, give data on present productive zone and proposed new productive zone. If proposal is to drill or deepen directionally, give pertinent data on subsurface locations and measured and true vertical depths. Give blowout preventer program, if any.

24.

SIGNED

Jack Mask

TITLE

CO-OWNER

DATE

6/25/74

(This space for Federal or State office use)

PERMIT NO.

APPROVAL

APPROVED BY

CONDITIONS OF APPROVAL, IF ANY:

TITLE

DATE

THIS APPROVAL IS TERMINATED IF OPERATIONS
HAVE NOT COMMENCED WITHIN 3 MONTHS.
EXPIRES 06/25/75

*See Instructions On Reverse Side

RECEIVED

JUN 25 1974

U.S. GEOLOGICAL SURVEY
ROSWELL, N.M.

APPROVED BY
JUL 8 - 1974
A. C. BROWN

**MEXICO OIL CONSERVATION COMMISSION
WELL LOCATION AND ACREAGE DEDICATION PLAT**

Form C-102
Supersedes C-128
Effective 1-1-65

All distances must be from the outer boundaries of the Section.

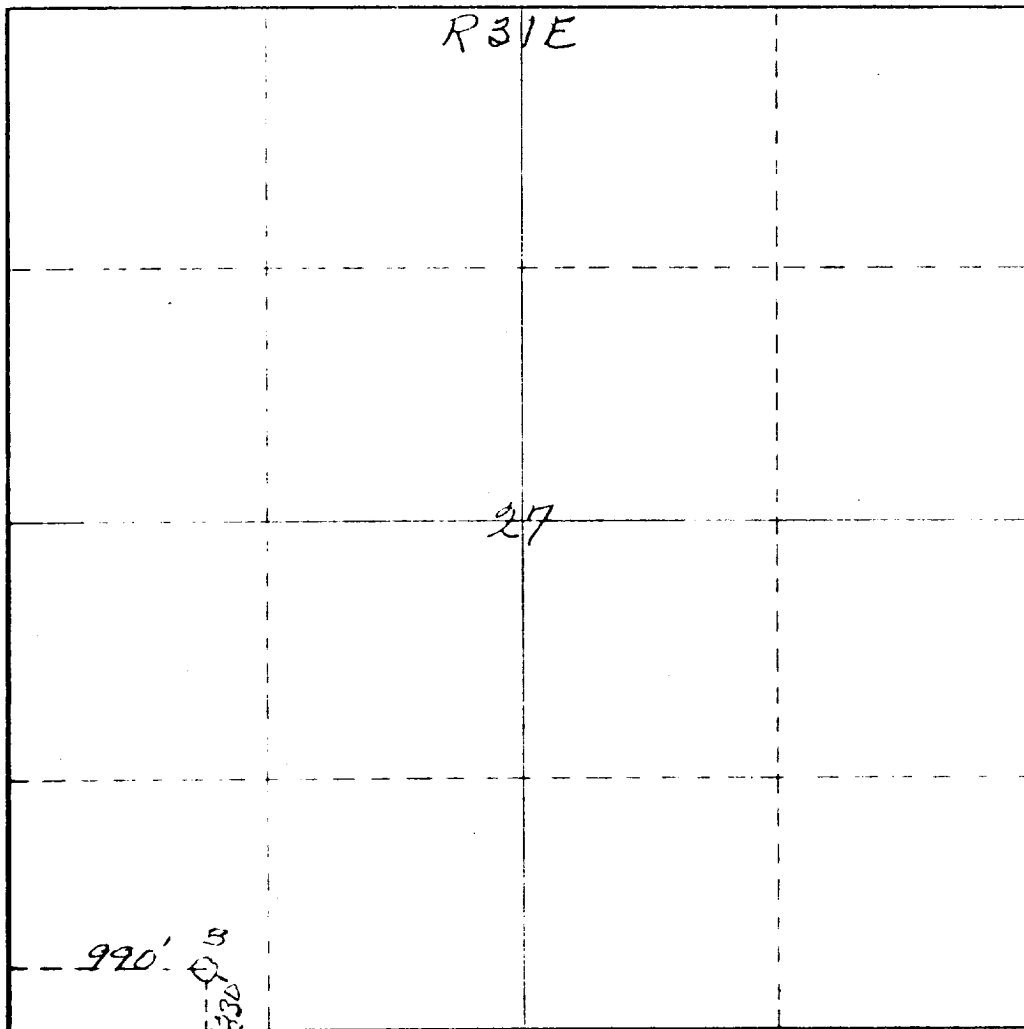
Operator Wastall E Mask			Lease Hinkle Federal 'B'		Well No. 3
Unit Letter M	Section 27	Township 18 South	Range 31 East	County Eddy	
Actual Section Corner of Well: 330 feet from the South line and 990 feet from the West line					
Ground Elevation 3623	Producing Formation Grayburg		Pool Shingel	Dedicated Acreage: 40 Acres	

1. Outline the acreage dedicated to the subject well by colored pencil or hachure marks on the plat below.
2. If more than one lease is dedicated to the well, outline each and identify the ownership thereof (both as to working interest and royalty).
3. If more than one lease of different ownership is dedicated to the well, have the interests of all owners been consolidated by communitization, unitization, force-pooling, etc?

Yes ☐ No ☐ If answer is "yes," type of consolidation _____

If answer is "yes," list the owners and tract descriptions which have actually been consolidated. (Use reverse side of this form if necessary.) _____

No allowable will be assigned to the well until all interests have been consolidated (by communitization, unitization, forced-pooling, or otherwise) or until a non-standard unit, eliminating such interests, has been approved by the Commission.

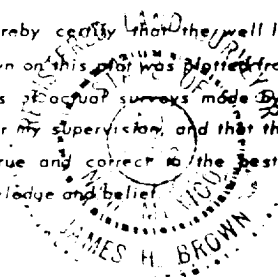


CERTIFICATION

I hereby certify that the information contained hereon is true and complete to the best of my knowledge and belief.

☒ **Jack Mask**
☒ Co-owner
☒ **Wastall E Mask**
☒ Date **6/25/74**

I hereby certify that the well location shown on this plat was plotted from field notes of actual surveys made by me or under my supervision, and that the same is true and correct to the best of my knowledge and belief.



Date Surveyed **June 13th 1974**
 Registered Professional Engineer
James H. Brown
 No. **542**

T
18
S

RECEIVED

1914

OFFICE OF THE
SHERIFF
COUNTY OF LOS ANGELES
CALIFORNIA

SHENGOH TO 4500'

* AMOCO below 4500'

KEOHANE-WELCH-SAUNDERS-IVERSON TO 4500'
L.C. 029392

Hinkle-b

PENN

27

26

T. Welch et. al.

26

Hinkle-b

SILURIAN

PAN AMERICAN-BUFFALO
GREENWOOD UNIT
below 4500'



J. Welch et. al.

Hinkle-b

PENN

34

RCO
Shallow Flood

Hinkle-b

Hinkle-A

CARPER Dalg. Co

Hinkle-A

Hinkle-A

Hinkle-B

KEOHANE-SAUNDERS

QUILLEN
PLEMONS

KEOHANE
WASTALL

KEOHANE-WASTALL-MASK-JENNINGS

2695
L.C. 058008
TIT FADDEN

TIT FADDEN

STATE

STATE

PRODUCER
GREEN
PRAYBURY

P. PENNSYLVANIAN
S. SILURIAN

RECEIVED

182
192

PLAN OF DEVELOPMENT

HINKLE "B" FEDERAL # 3

THE ATTACHED PLATS SHOW INFORMATION REQUESTED IN ITEMS NO 1, 2, 3, 4, 5, AND 10.

NO. 6 WATER SUPPLY WILL BE OBTAINED FROM I & W INC.

NO. 7. WASTE DISPOSAL WILL BE HANDLED BY CIRCULATING AND TREATING FACILITIES INSTALLED AT THE PROPOSED TANK BATTERY. ALL DRILLING WASTE WILL BE BURIED 24" BELOW THE SURFACE.

NO. 8. THERE ARE NO CAMPS IN THIS VICINITY

NO. 9 THERE ARE NO AIRSTRIPS IN THIS VICINITY.

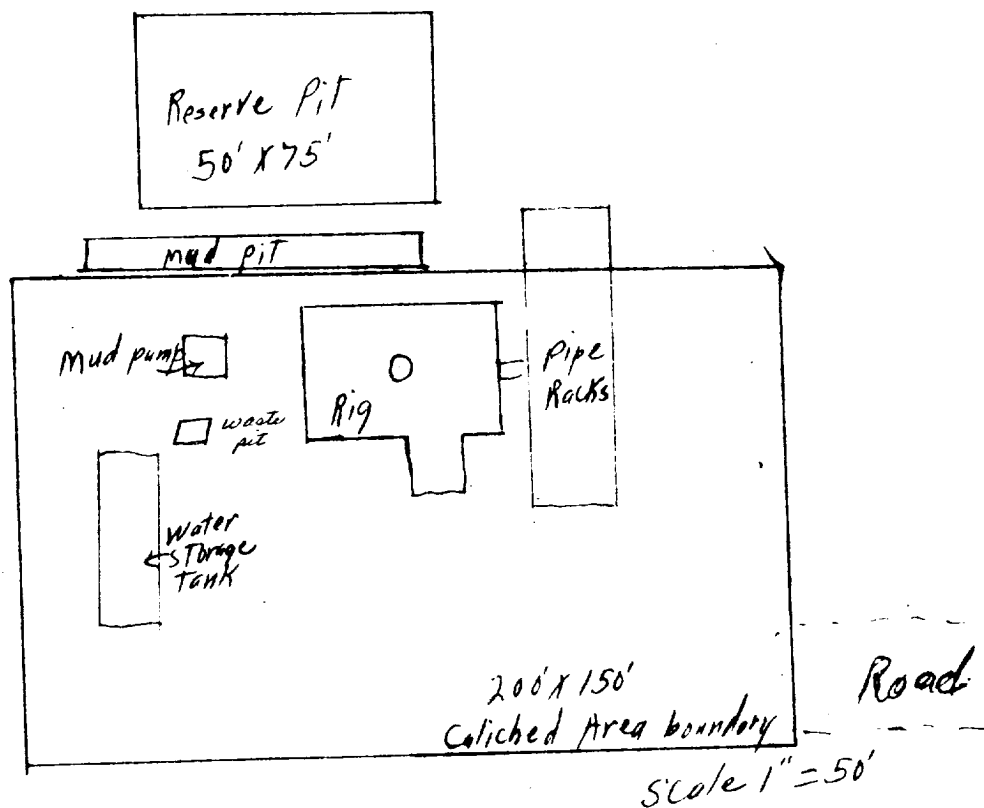
NO. 11. AFTER COMPLETION OF WELL, ALL PITS ARE TO BE FILLED AND LEVELLED AND RETURNED TO AS NEAR NORMAL CONDITION AS REASONABLY POSSIBLE.

NO. 12. MUD PROGRAMS - WE WILL USE FRESH WATER TO 650' AND THEN USE SALT GEL TO TOTAL DEPTH.

BLOWOUT PREVENTER WILL BE DOUBLE MANUAL (SHAEFFER) B.O.P WITH 3000# TEST.

RECEIVED

JUN 10 1964



Development Plan for Surface Use

Westall + Maske Roswell N Mex

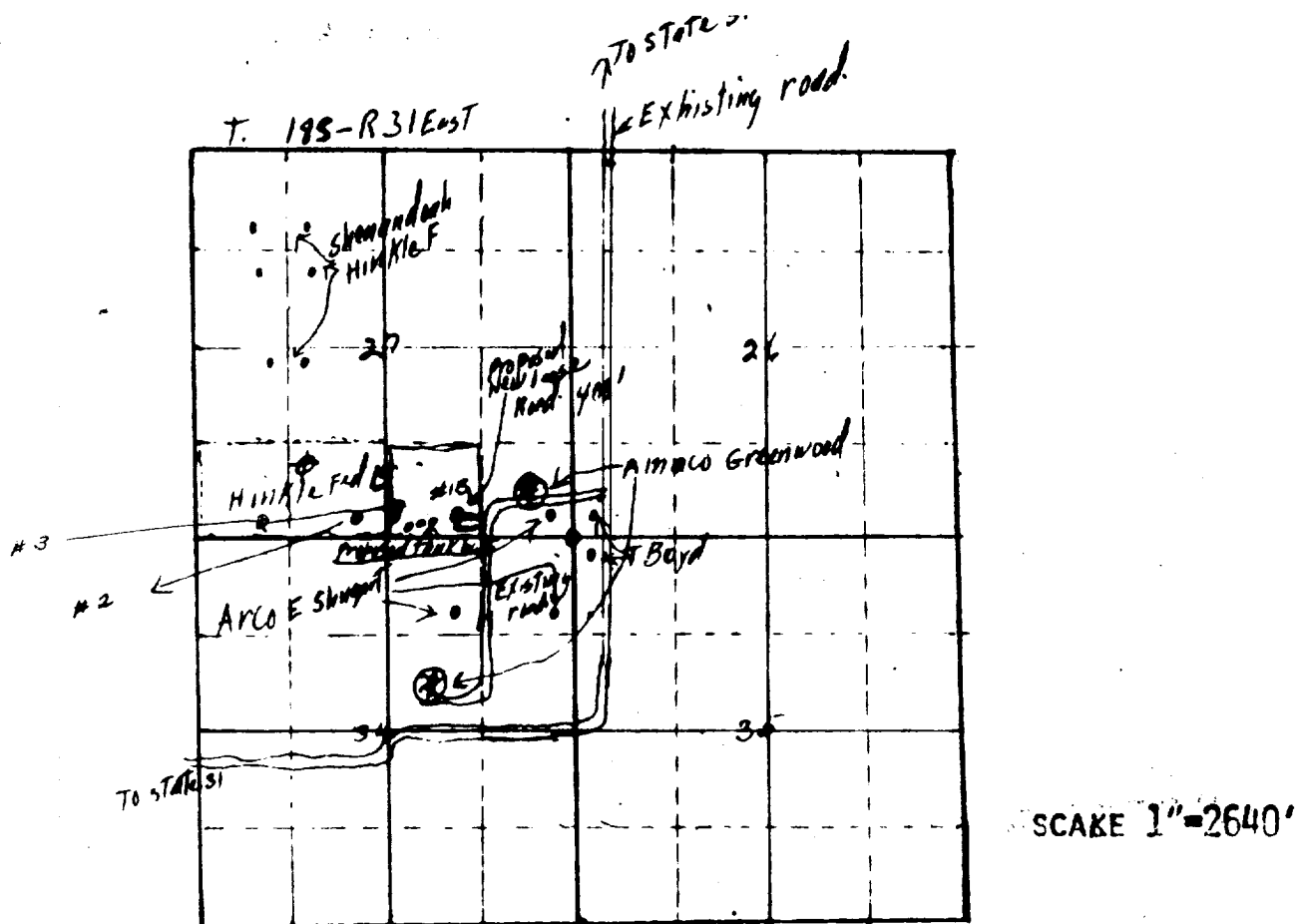
RECEIVED

JUN 28 1974

INKLE FEDERAL " 3 M

U.S. DEPT. OF THE INTERIOR

LOCATED 330' FROM THE SOUTH LINE AND 990' FROM WEST
LINE, SECTION 27, 18 SOUTH, RANGE 31 EAST



WESTALL - MASK, DRAWER 1477, ROSWELL NM 88201

HINKLE FEDERAL "B" #3 LOCATION 330' FROM SOUTH LINE, 990' FROM WEST LINE, SEC 27, 18 SOUTH, RANGE 31 EAST N.M. EDDY COUNTY

DEVELOPMENT PLAN FOR SURFACE USE

RECEIVED

JUL 2 1974

U.S. DEPARTMENT OF THE INTERIOR
BUREAU OF LAND MANAGEMENT

SECRET

SECRET

SECRET

SECRET