

NEW MEXICO OIL CONSERVATION COMMISSION
WELL LOCATION AND ACREAGE DEDICATION PLAT

Form No. 1
Supersedes Form
No. 1-1-66

All distances must be from the outer boundaries of the Section

Amoco Production Co.

Lessee

State "ER" Com.

Acres

1

Well Letter
G

Section
6

Township
19 South

Range
29 East

County
Eddy

Approximate Location of Well:

1980

feet from the

North

line and

1980

feet from the

East

line

Ground Surface Elevation

3393.4

Producing Formation

MORROW

Pool

UND. TURKEY TRACK MORROW, N.

Dedicated Acreage

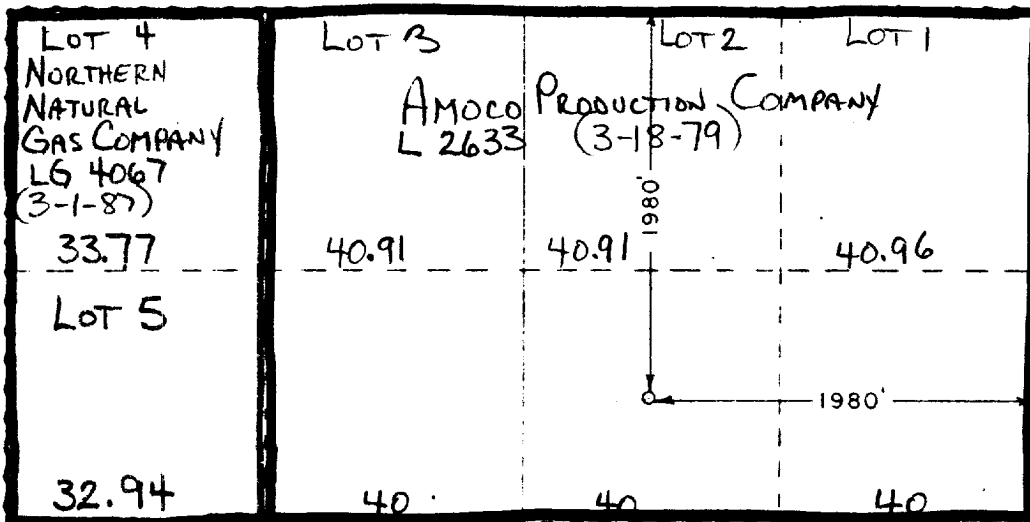
309.49

1. Outline the acreage dedicated to the subject well by colored pencil or hatchure marks on the plat below.
2. If more than one lease is dedicated to the well, outline each and identify the ownership thereof (both as to working interest and royalty).
3. If more than one lease of different ownership is dedicated to the well, have the interests of all owners been consolidated by communitization, unitization, force-pooling, etc?

☒ Yes ☐ No If answer is "yes," type of consolidation COMMUNITIZATION

If answer is "no," list the owners and tract descriptions which have actually been consolidated. (Use reverse side of this form if necessary.)

No allowable will be assigned to the well until all interests have been consolidated (by communitization, unitization, forced-pooling, or otherwise) or until a non-standard unit, eliminating such interests, has been approved by the Commission.



CERTIFICATION

I hereby certify that the information contained herein is true and complete to the best of my knowledge and belief.

Name Kenneth Brand
Position Senior Staff Assistant
Company Amoco Production Company
Date 7-20-77

I hereby certify that the well location shown on this plat was plotted from field notes of actual surveys made by me or under my supervision, and that the same is true and correct to the best of my knowledge and belief.

Date Surveyed 7-13-77

Registered Professional Engineer and/or Land Surveyor

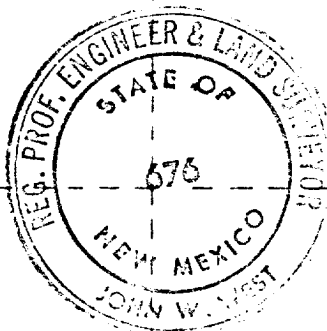
John W. West

Certificate No. 676

RECEIVED

JUL 27 1977

O. C. C.
ARTESIA OFFICE



330 660 990 1320 1650 1980 2310 2640 2970 3300 3630 3960 4290 4620 4950 5280 5610 5940

RECEIVED

JUL 21 1977

OIL CONSERVATION COMM.
HOBBS, N. M.