

NO. OF COPIES RECEIVED	6
DISTRIBUTION	
SANTA FE	1
FILE	1
U.S.G.S.	2
LAND OFFICE	1
OPERATOR	1

**RECEIVED**  
NEW MEXICO OIL CONSERVATION COMMISSION

**APR 14 1978**

**O. C. C.**  
**ANTHONY OFFICE**

30-015-22500

Form C-101  
Revised 1-1-65

5A. Indicate Type of Lease STATE <input checked="" type="checkbox"/> FEE <input type="checkbox"/>
5. State Oil & Gas Lease No. L-892

**APPLICATION FOR PERMIT TO DRILL, DEEPEN, OR PLUG BACK**

1a. Type of Work DRILL <input checked="" type="checkbox"/> DEEPEN <input type="checkbox"/> PLUG BACK <input type="checkbox"/>		7. Unit Agreement Name	
b. Type of Well OIL WELL <input checked="" type="checkbox"/> GAS WELL <input type="checkbox"/> OTHER <input type="checkbox"/> SINGLE ZONE <input checked="" type="checkbox"/> MULTIPLE ZONE <input type="checkbox"/>		8. Farm or Lease Name State "M"	
2. Name of Operator The Wiser Oil Company		9. Well No. 1	
3. Address of Operator P.O. Box 2467 Hobbs, New Mexico 88240		10. Field and Pool, or Wildcat Wildcat	
4. Location of Well UNIT LETTER G LOCATED 2081 FEET FROM THE North LINE AND 2278 FEET FROM THE East LINE OF SEC. 2 TAP. 19S RSE. 27E NMPM		12. County Eddy	
19. Proposed Depth 2000'		19A. Formation Grayburg	
20. Rotary or C.T. Rotary			
21. Elevations (Show whether DF, RI, etc.) 3527.4 GR	21A. Kind & Status Plug. Bond Blanket-Good Standing	21B. Drilling Contractor LaRue & Munsey	22. Approx. Date Work will start 4-17-78

**PROPOSED CASING AND CEMENT PROGRAM**

SIZE OF HOLE	SIZE OF CASING	WEIGHT PER FOOT	SETTING DEPTH	SACKS OF CEMENT	EST. TOP
12-1/4"	8-5/8"	24#	350'	250	Surface
7-7/8"	4-1/2"	9.5#	2000'	400	Surface

We plan to drill a 12-1/4" hole to 350', run 350' of new K-55 24# API casing and circulate cement to surface. WOC 18 hrs and test surface casing. Resume drilling a 7-7/8" hole to a depth of 2000'. Run necessary open hole logs to evaluate formation. We will then either plug well according to Oil Commission requirements or run production casing string of 4-1/2" 9.5# new casing to TD and cement back to surface. We will then complete as necessary to make producing well in Grayburg formation.

Drilling Contractor will maintain adequate blow-out prevention control through the drilling operation using a Schaffer Series 900 double ram preventer w/ 3-1/2" and blank rams.

APPROVAL VALID  
FOR 15 DAYS UNLESS  
SUSPENDED,

7-17-78

IN ABOVE SPACE DESCRIBE PROPOSED PROGRAM: IF PROPOSAL IS TO DEEPEN OR PLUG BACK, GIVE DATA ON PRESENT PRODUCTIVE ZONE AND PROPOSED NEW PRODUCTIVE ZONE. GIVE BLOWOUT PREVENTER PROGRAM, IF ANY.

I hereby certify that the information above is true and complete to the best of my knowledge and belief.

Signed B. D. Singletary Title District Supt. Date 4-12-78

(This space for State Use)

APPROVED BY W. A. Gussott TITLE SUPERVISOR, DISTRICT II DATE APR 17 1978

CONDITIONS OF APPROVAL, IF ANY:

Sufficient  
Casing  
8 7/8" casing

NEW MEXICO OIL CONSERVATION COMMISSION  
WELL LOCATION AND ACREAGE DEDICATION PLAT

Form C-102  
Supersedes C-128  
Effective 1-1-65

All distances must be from the outer boundaries of the Section

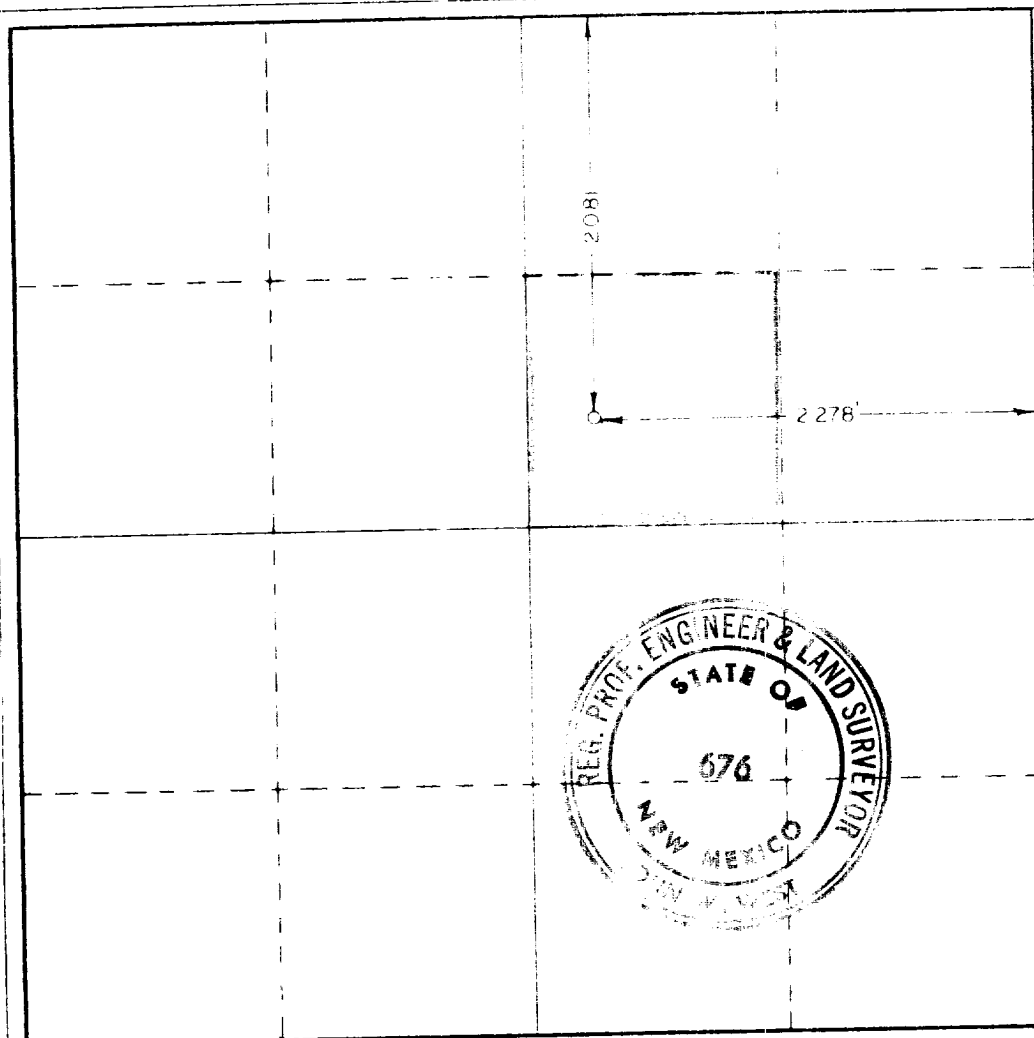
Operator <b>The Wiser Oil Company</b>			State <b>"M"</b>		Well No. <b>1</b>
Section <b>G</b>	Section <b>2</b>	Township <b>19 South</b>	Range <b>27 East</b>	County <b>Eddy</b>	
Actual Well Location of Well:					
<b>2081</b>	feet from the <b>North</b>	line and	<b>2278</b>	feet to the <b>East</b>	line
Ground Level Elev. <b>3527.4</b>	Producing Formation <b>Grayburg</b>		Dedicated Acreage <b>40</b>		Acres

- Outline the acreage dedicated to the subject well by colored pencil or hatchure marks on the plat below.
- If more than one lease is dedicated to the well, outline each and identify the ownership thereof (both as to working interest and royalty).
- If more than one lease of different ownership is dedicated to the well, have the interests of all owners been consolidated by communitization, unitization, force-pooling, etc?

☐ Yes ☐ No If answer is "yes," type of consolidation \_\_\_\_\_

If answer is "no," list the owners and tract descriptions which have actually been consolidated. (Use reverse side of this form if necessary) \_\_\_\_\_

No allowable will be assigned to the well until all interests have been consolidated (by communitization, unitization, forced-pooling, or otherwise) or until a non-standard unit, eliminating such interests, has been approved by the Commission.



**CERTIFICATION**

I hereby certify that the information contained herein is true and complete to the best of my knowledge and belief.

*B.D. Singletary*  
Name

**B.D. Singletary**

Position  
**District Supt.**

Company  
**The Wiser Oil Company**

Date  
**4-12-78**

I hereby certify that the well location shown on this plat was plotted from field notes of actual surveys made by me or under my supervision, and that the same is true and correct to the best of my knowledge and belief.

Date Surveyed  
**4/10/78**

Registered Professional Engineer and/or Land Surveyor

*John W. West*

Certificate No. **John W. West 676**  
**Ronald J. Eidson 3239**

0 330 660 990 1320 1650 1980 2310 2640 2000 1800 1600 1400 1200 1000 800