

NO. OF COPIES RECEIVED	
DISTRIBUTION	
SANTA FE	1
FILE	1
U.S.G.S.	2
LAND OFFICE	1
OPERATOR	1

NEW MEXICO OIL CONSERVATION COMMISSION

RECEIVED

30-015-23108

Form C-101
Revised 1-1-65

DEC 4 - 1979

O. C. C.
ARTESIA, OFFICE

5A. Indicate Type of Lease
STATE PFC

5. State Oil & Gas Lease No.
K-6949-2

APPLICATION FOR PERMIT TO DRILL, DEEPEN, OR PLUG BACK

1a. Type of Work
DRILL DEEPEN PLUG BACK

b. Type of Well
OIL WELL GAS WELL OTHER
SINGLE ZONE MULTIPLE ZONE

2. Name of Operator
The Petroleum Corporation

3. Address of Operator
1440 Midland Natl. Bank Tower, Midland, TX 79701

4. Location of Well
UNIT LETTER ~~1098~~ LOCATED west FEET FROM THE 1980 LINE
AND 1980 FEET FROM THE south LINE OF SEC. 27 TWP. 19-S RGE. 29-E NMAP

7. Unit Agreement Name
Parkway West

8. Farm or Lease Name
Parkway West Unit

9. Well No.
10

10. Field and Pool, or Without Undesignated
Parkway West (Morrow)

11. County
Eddy

19. Proposed Depth 11,800 ft. 19A. Formation Morrow 20. Rotary or C.T. Rotary

21. Elevations (Show whether D.F., R.I., etc.) 3319.1 GR 21A. Kind & Status Plug. Bond Blanket 21B. Drilling Contractor Warton 22. Approx. Date Work will start 3-14-80

PROPOSED CASING AND CEMENT PROGRAM

SIZE OF HOLE	SIZE OF CASING	WEIGHT PER FOOT	SETTING DEPTH	SACKS OF CEMENT	EST. TOP
17 1/2"	13-3/8"	48#	350'	600	Circ.
12 1/4"	8-5/8"	24# & 32#	3100'	1400	Circ.
7-7/8"	4-1/2"	11.6# & 13.5#	11000'	1000	8500'

Set surface casing into T/salt estimated to be 350', circ. cement. Drill 12-1/4" hole with brine water to prevent washout to 3100', set 8-5/8" casing @ 3100', circ cement. Drill 7-7/8" hole with fresh water to 9000'. Add brine water @ 9500' to raise mud weight. Drill to TD of 11,800' to test Morrow and intermediate horizons. If commercial, will run casing to TD. Cement with sufficient cement to bring cement above all prospective zones. Estimated T/cement to be 8500'. Perf and stimulate Morrow for production.

NOTE: Gas is not dedicated.
MUD PROGRAM: 0-350': spud mud; 350-3100': 10# brine water; 3100-9000': fresh water; 9000-10800': cut brine water gel, MW 9.4, vis 35; 10800-TD: starch, salt gel and Drispac MW 9.7, vis 36-40 @ TD. WL 6 cc thru Morrow. Bottom hole pressure @ TD anticipated to be 4700 psi. No abnormal pressures expected. Diagram attached.
BOP PROGRAM: BOPs to be installed on 13-3/8" and 8-5/8" casing. Diagram attached.
BOP to be tested daily. Test with yellow jacket prior to drilling Wolfcamp formation.

APPROVAL VALID FOR 90 DAYS UNLESS DRILLING COMMENCED

EXPIRES 3-26-80

IN ABOVE SPACE DESCRIBE PROPOSED PROGRAM: IF PROPOSAL IS TO DEEPEN OR PLUG BACK, GIVE DATA ON PRESENT PRODUCTIVE ZONE AND PROPOSED NEW PRODUCTIVE ZONE. GIVE BLOWOUT PREVENTER PROGRAM, IF ANY.

I hereby certify that the information above is true and complete to the best of my knowledge and belief.

Signed J. K. Glatner Title District Engineer Date 12-3-79

(This space for State Use)

APPROVED BY W. A. Gressett TITLE SUPERVISOR, DISTRICT H DATE DEC 26 1979

CONDITIONS OF APPROVAL, IF ANY: Cement must be circulated to surface behind 13 3/8" casing

NEW MEXICO OIL CONSERVATION COMMISSION
WELL LOCATION AND ACREAGE DEDICATION PLAT

Form O-112
Supersedes C-128
Effective 4-65

All distances must be from the outer boundaries of the Section

Operator THE PETROLEUM CORP.		Lease Parkway West Unit		Acres 10
Tract Letter K	Section 27	Township 19 South	Range 29 East	County Eddy
Actual Footage Location of Well: 1980 feet from the South line and 1980 feet from the West line				
Ground Level Elev. 3319.1	Producing Formation Morrow	Field Undesignated Parkway West (Morrow)		Section & Range S/2 320

1. Outline the acreage dedicated to the subject well. Indicate by lines or hardware marks on the plat below.
2. If more than one lease is dedicated to the well, outline each and identify the ownership thereof (both as to working interest and royalty).
3. If more than one lease of different ownership is dedicated to the well, have the interests of all owners been consolidated by communitization, unitization, forced-pooling, etc.

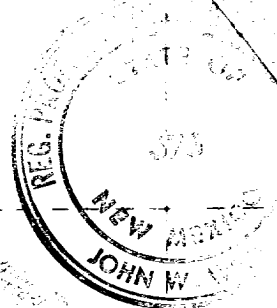
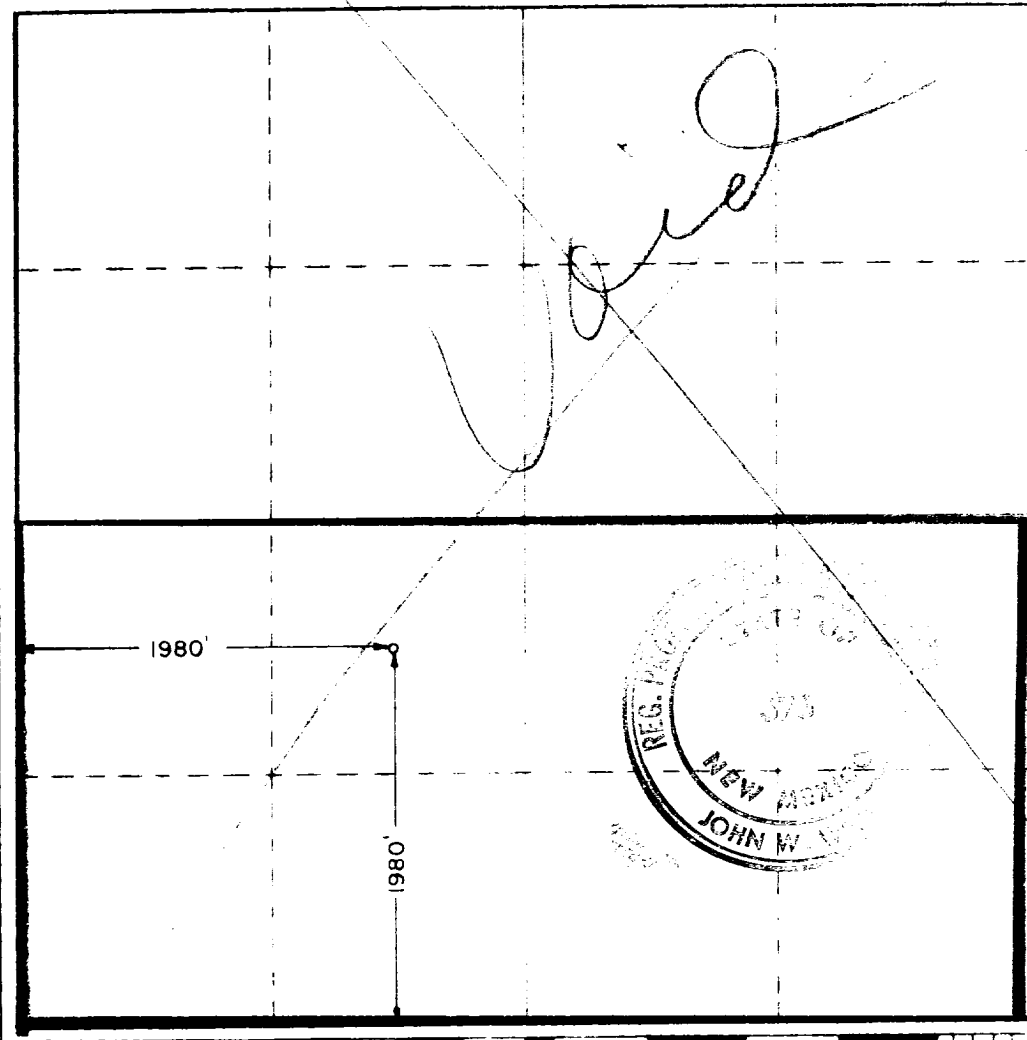
DEC 4 - 1979

O.C.O. ARTESIA OFFICE

Yes No If answer is "yes" type of consolidation Unitization

If answer is "no," list the owners and tract descriptions which have actually been consolidated (use reverse side of this form if necessary.)

No allowable will be assigned to the well until all interests have been consolidated (by communitization, unitization, forced-pooling, or otherwise) or until a non-standard unit, eliminating such interests, has been approved by the Commission.



DECLARATION

I hereby certify that the information contained herein is true and complete to the best of my knowledge and belief.

J. K. Gleitman
District Engineer

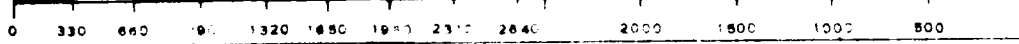
The Petroleum Corp.

12-3-79

I hereby certify that the well location shown on this plat was plotted from field notes or other surveys made by me or under my supervision and that the same is true and correct to the best of my knowledge and belief.

November 7, 1979

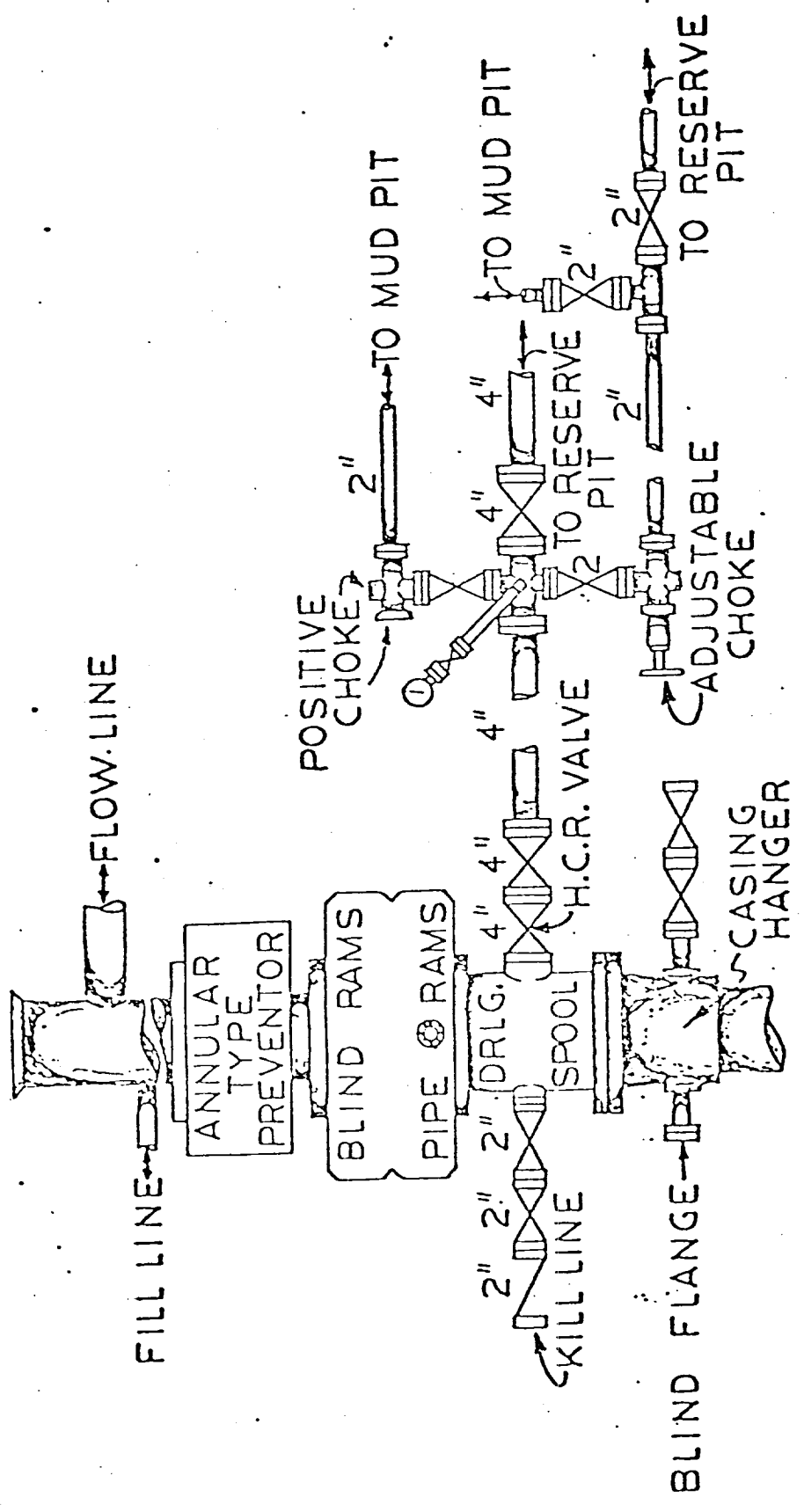
John W. West
Certificate No. **JOHN W. WEST 676**
PATRICK A. ROMERO 6863
Ronald J. Eidson 3239



VVATAWIN DRILLING CO.

B.O.P. ARRANGEMENT—RIG NO. 4

- 1-7 STATION KOOMEY ACCUMULATOR
- 1-KOOMEY REMOTE STAND
- 5000 LB. W.P. MANIFOLD
- 1-13 5/8" TYPE "U" DOUBLE B.O.P., 900 SERIES, 5000 W.P.
- 1-10" G.K. HYDRILL—5000 W.P.



DATE: 9/7/78

DRAWN BY: M. WARTON
ISSUED: SAFETY DEPT