

NO. OF COPIES RECEIVED	
DISTRIBUTION	
SANTA FE	1
FILE	1
U.S.G.S.	1
LAND OFFICE	
OPERATOR	1

NEW MEXICO OIL CONSERVATION COMMISSION

RECEIVED

DEC 12 1980

O. C. D.

ARTESIA OFFICE

Form C-101  
Revised 1-1-65

5A. Indicate Type of Lease

STATE ☐

FEE ☒

5. State Oil & Gas Lease No.

APPLICATION FOR PERMIT TO DRILL, DEEPEN, OR PLUG BACK

1a. Type of Work		7. Unit Agreement Name	
b. Type of Well OIL WELL <input type="checkbox"/> GAS WELL <input checked="" type="checkbox"/> OTHER <input type="checkbox"/>		8. Farm or Lease Name	
DEEPEN <input type="checkbox"/> PLUG BACK <input type="checkbox"/>		Routh "NU" (Deep)	
2. Name of Operator Yates Petroleum Corporation		9. Well No.	
3. Address of Operator 207 South 4th Street, Artesia, NM 88210		10. Field and Pool, or Wildcat Boyd Morrow	
4. Location of Well UNIT LETTER B LOCATED 660 FEET FROM THE North LINE		12. County Eddy	
AND 1980 FEET FROM THE East LINE OF SEC. 14 TWP. 19S RGE. 24E N41PM			
19. Proposed Depth Approx. 9,000		19A. Formation Morrow	
21A. Kind & Status Plug. Bond Blanket		20. Rotary or C.T. Rotary	
21. Elevations (Show whether DT, RT, etc.) 3649 GL		22. Approx. Date Work will start As soon as possible	

23.

PROPOSED CASING AND CEMENT PROGRAM

SIZE OF HOLE	SIZE OF CASING	WEIGHT PER FOOT	SETTING DEPTH	SACKS OF CEMENT	EST. TOP
17 1/2"	13 3/8"	48# J-55	Approx. 350'	350	circulate
12 1/4"	8 5/8"	24# J-55	Approx. 950'	550	circulate
7 7/8"	5 1/2" or 4 - 1/2"	10.5-17# K-55 10.5-11.6# K-55	TD	300	circulate

Propose to drill and test the Morrow & intermediate horizons. Will set approximately 350' surface casing to shut off gravel and cavings. Will set intermediate casing 100' below Artesian Water Zone. Both strings will be circulated with cement. If commercial, will run 5 1/2" or 4 1/2" casing and cement with 1000' of cover.

MUD PROGRAM: Gel and LCM to 950', Water to 6700', Flosal-Drispak to TD, MW 8.9-9.1, Vis 34-40, WL 12-7.

BOP PROGRAM: BOP's and hydril on 8 5/8" casing, tested daily, Yellow Jacket prior to drilling Wolfcamp (see Exhibit D)

GAS NOT DEDICATED

APPROVAL AND  
FOR 90 DAYS UNLESS  
DRILLING COMMENCED,

EXPIRES 3-16-81

IN ABOVE SPACE DESCRIBE PROPOSED PROGRAM: IF PROPOSAL IS TO DEEPEN OR PLUG BACK, GIVE DATA ON PRESENT PRODUCTIVE ZONE AND PROPOSED NEW PRODUCTIVE ZONE, GIVE BLOWOUT PREVENTER PROGRAM, IF ANY.

I hereby certify that the information above is true and complete to the best of my knowledge and belief.

Signed Shirley K. Richey Title Geographer Date 12-12-80

(This space for State Use)

APPROVED BY W. A. Gressett TITLE SUPERVISOR, DISTRICT II DATE DEC 16 1980

CONDITIONS OF APPROVAL, IF ANY:

Cement must be circulated to surface behind 13 3/8" 8 5/8" casing

Notify N.M.O.C.C. in sufficient time to witness cementing

on 8 5/8" casing

NEW MEXICO OIL CONSERVATION COMMISSION  
WELL LOCATION AND ACREAGE DEDICATION PLAT

Form C-102  
Supersedes C-128  
Effective 1-1-65

All distances must be from the outer boundaries of the Section.

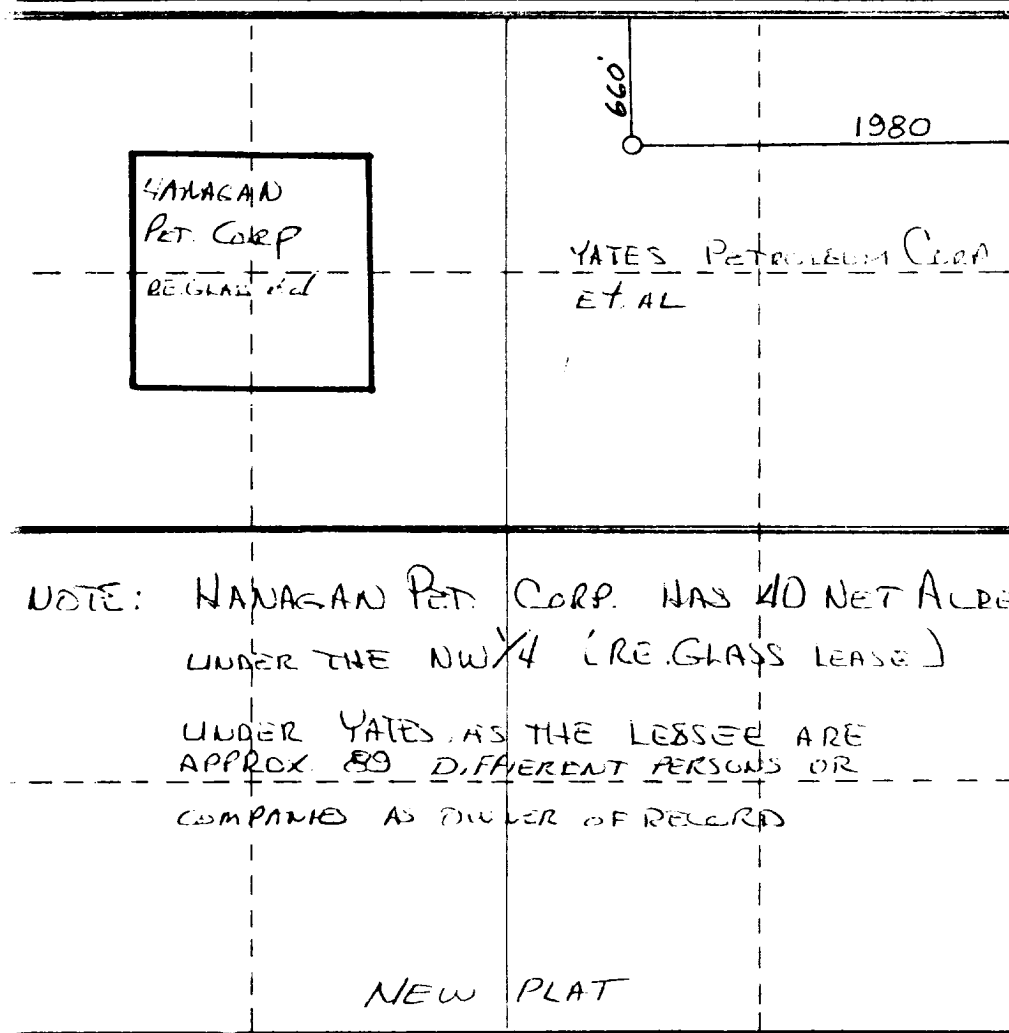
Lessor <b>YATES PETROLEUM CORPORATION</b>			Lease <b>ROUTH "NU" (DEEP) COM</b>		Well No. <b>2</b>
Section Letter <b>B</b>	Section <b>14</b>	Township <b>19S</b>	Range <b>24E</b>	County <b>EDDY</b>	
Actual Footage Location of Well: <b>660</b> feet from the <b>NORTH</b> line and <b>1980</b> feet from the <b>EAST</b> line					
Ground Level Elev. <b>3651.5</b>	Producing Formation <b>MORROW</b>		Pool <b>BOYD MORROW</b>		Dedicated Acreage: <b>320</b> Acres

- Outline the acreage dedicated to the subject well by colored pencil or hachure marks on the plat below.
- If more than one lease is dedicated to the well, outline each and identify the ownership thereof (both as to working interest and royalty).
- If more than one lease of different ownership is dedicated to the well, have the interests of all owners been consolidated by communitization, unitization, force-pooling, etc?

☒ Yes ☐ No If answer is "yes," type of consolidation COMMUNITIZATION

If answer is "no," list the owners and tract descriptions which have actually been consolidated. (Use reverse side of this form if necessary.)

No allowable will be assigned to the well until all interests have been consolidated (by communitization, unitization, forced-pooling, or otherwise) or until a non-standard unit, eliminating such interests, has been approved by the Commission.



CERTIFICATION

I hereby certify that the information contained herein is true and complete to the best of my knowledge and belief.

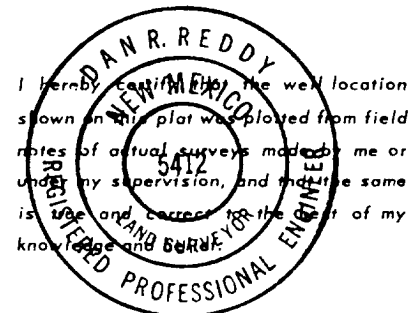
*[Signature]*  
Name

*[Signature]*  
Position

*[Signature]*  
Company

*[Signature]*  
Date

**12-12-80**



Date Surveyed  
**DECEMBER 12, 1980**

Registered Professional Engineer  
and/or Land Surveyor

*[Signature]*  
Certificate No.

**NM PE&LS #5412**

330 660 990 1320 1650 1980 2310 2640 2970 3300 3630 3960 4290 4620 4950 5280 5610 5940 6270 6600

N MEXICO OIL CONSERVATION COMMISSION  
WELL LOCATION AND ACREAGE DEDICATION PLAT

Form C-102  
Supersedes C-1  
Effective 1-1-65

All distances must be from the outer boundaries of the Section.

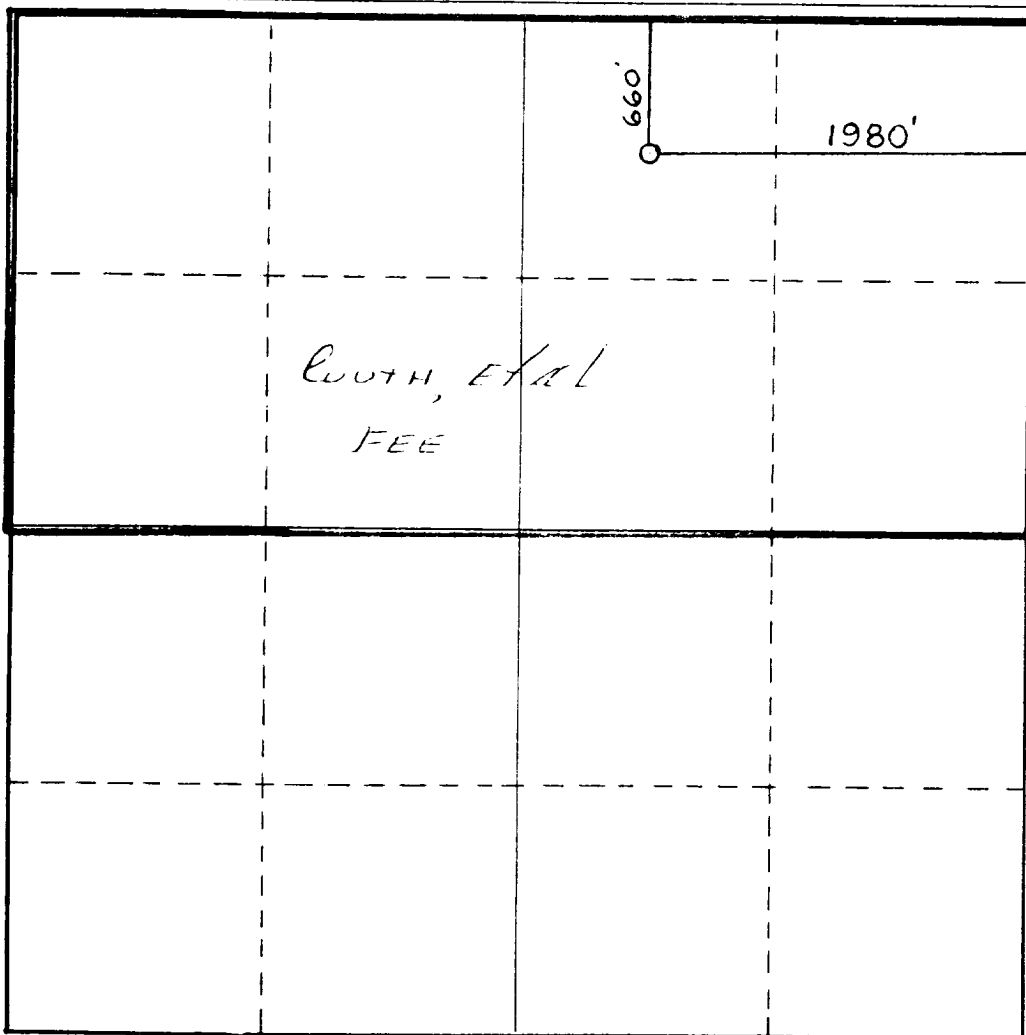
Operator <b>YATES PETROLEUM</b>			Lease <b>ROUTH "NU" (DEEP) COM</b>		Well No. <b>#1</b>
Unit Letter <b>B</b>	Section <b>14</b>	Township <b>19S</b>	Range <b>24E</b>	County <b>EDDY</b>	
Actual Footage Location of Well: <b>660</b> feet from the <b>NORTH</b> line and <b>1980</b> feet from the <b>EAST</b> line					
Ground Level Elev. <b>3649</b>	Producing Formation <b>MORROW</b>		Pool <b>BOYD MORROW</b>		Dedicated Acreage: <b>320</b> Acres

1. Outline the acreage dedicated to the subject well by colored pencil or hachure marks on the plat below.
2. If more than one lease is dedicated to the well, outline each and identify the ownership thereof (both as to working interest and royalty).
3. If more than one lease of different ownership is dedicated to the well, have the interests of all owners been consolidated by communitization, unitization, force-pooling, etc?

☒ Yes    ☐ No    If answer is "yes," type of consolidation \_\_\_\_\_

If answer is "no," list the owners and tract descriptions which have actually been consolidated. (Use reverse side of this form if necessary.) \_\_\_\_\_

No allowable will be assigned to the well until all interests have been consolidated (by communitization, unitization, forced-pooling, or otherwise) or until a non-standard unit, eliminating such interests, has been approved by the Commission.



CERTIFICATION

I hereby certify that the information contained herein is true and complete to the best of my knowledge and belief.

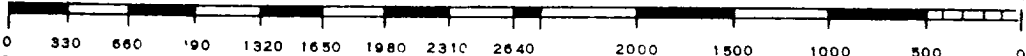
*Aliserio Rodriguez*  
Name  
**ALISERIO RODRIGUEZ**  
Position  
**GEOGRAPHER**  
Company  
**YATES PETROLEUM CORP**  
Date  
**12-12-80**

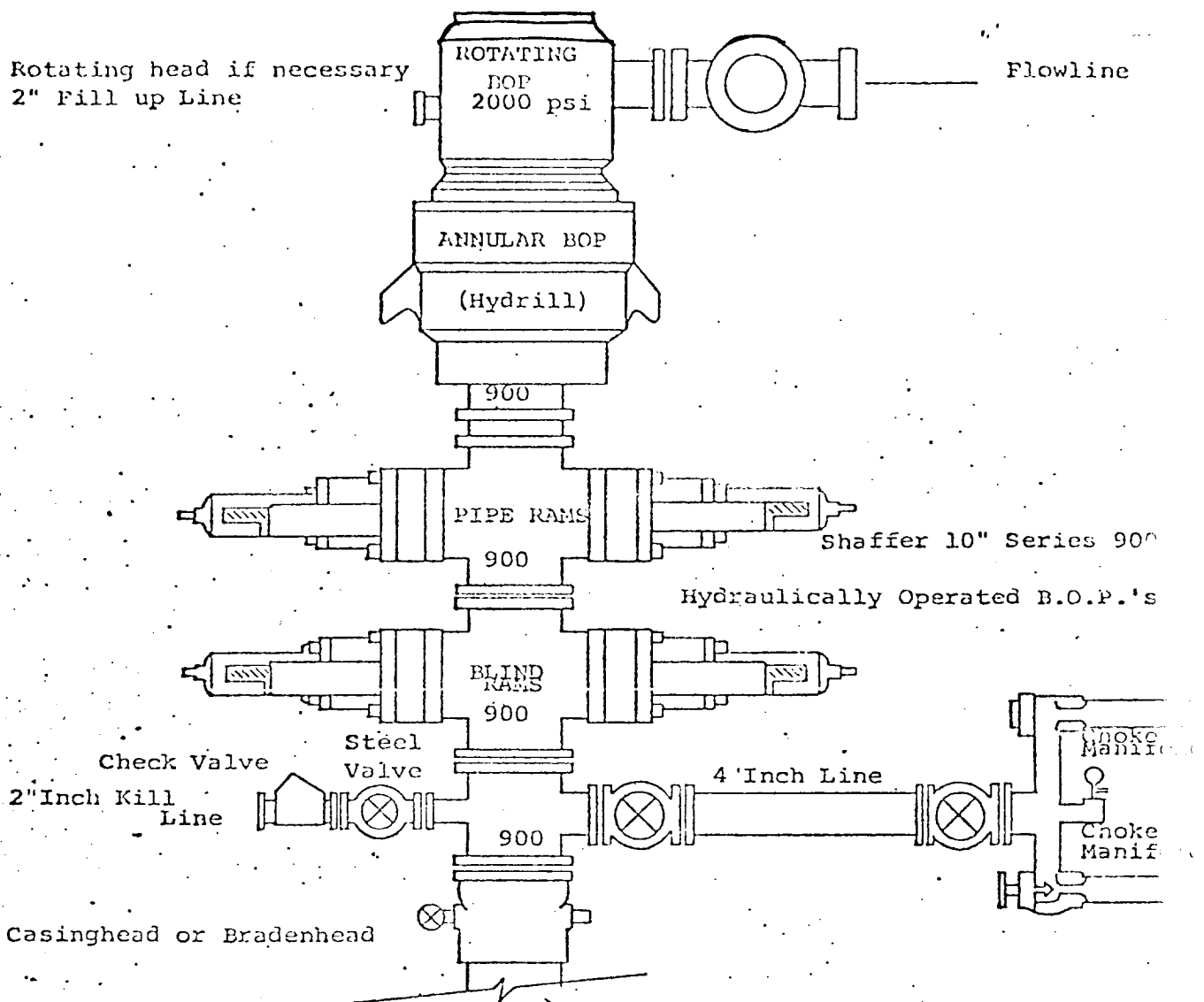
I hereby certify that the well location shown on this plat was plotted from field notes of actual surveys made by me or under my supervision, and that the same is true and correct to the best of my knowledge and belief.

Date Surveyed  
**DECEMBER 12, 1980**  
Registered Professional Engineer  
and/or Land Surveyor

*Dan R. Reddy*  
Certificate No.

**NM PE&LS #5412**





THE FOLLOWING CONSTITUTE MINIMUM BLOWOUT PREVENTER REQUIREMENTS

1. All preventers to be hydraulically operated with secondary manual control, installed prior to drilling out from under casing.
2. Choke outlet to be a minimum of 4" diameter.
3. Kill line to be of all steel construction of 2" minimum diameter.
4. All connections from operating manifolds to preventers to be all steel, hole or tube a minimum of one inch in diameter.
5. The available closing pressure shall be at least 15% in excess of that required with sufficient volume to operate the B.O.P.'s.
6. All connections to and from preventer to have a pressure rating equivalent to that of the B.O.P.'s.
7. Inside blowout preventer to be available on rig floor.
8. Operating controls located a safe distance from the rig floor.
9. Hole must be kept filled on trips below intermediate casing. Operator not responsible for blowouts resulting from not keeping hole full.
10. D. P. float must be installed and used below zone of first gas intrusion.