

**RECEIVED BY**  
 Form 9-331 C  
 (May 1983)  
**MAR 21 1985**  
 O. C. D.  
 APPLICATION FOR PERMIT TO DRILL, DEEPEN, OR PLUG BACK

UNITED STATES DEPARTMENT OF THE INTERIOR  
 GEOLOGICAL SURVEY  
 SUBMIT IN TRI. ATE\*  
 (Other instructions on reverse side)

Form approved.  
 Budget Bureau No. 42-R1425.

30-015-25235

1a. TYPE OF WORK  
 DRILL  DEEPEN  PLUG BACK

b. TYPE OF WELL  
 OIL WELL  GAS WELL  OTHER  SINGLE ZONE  MULTIPLE ZONE

2. NAME OF OPERATOR  
 Siete Oil and Gas Corporation

3. ADDRESS OF OPERATOR  
 P.O. Box 2523, Roswell, New Mexico 88201

4. LOCATION OF WELL (Report location clearly and in accordance with any State requirements.)\*  
 At surface 2310' FSL 1650' FWL  
 At proposed prod. zone Same  
*ut. K*

14. DISTANCE IN MILES AND DIRECTION FROM NEAREST TOWN OR POST OFFICE\*  
 15.10 miles Southeast of Loco Hills, New Mexico

15. DISTANCE FROM PROPOSED LOCATION TO NEAREST PROPERTY OR LEASE LINE, FT. 1650'  
 (Also to nearest drilg. unit line, if any)

16. NO. OF ACRES IN LEASE 320

17. NO. OF ACRES ASSIGNED TO THIS WELL 40

18. DISTANCE FROM PROPOSED LOCATION TO NEAREST WELL, DRILLING, COMPLETED, OR APPLIED FOR, ON THIS LEASE, FT. 2310'

19. PROPOSED DEPTH 4500'

20. ROTARY OR CABLE TOOLS Rotary

21. ELEVATIONS (Show whether DF, RT, GR, etc.)  
 3709'

22. APPROX. DATE WORK WILL START\*  
 March 30, 1985

5. LEASE DESIGNATION AND SERIAL NO.  
 LC-065680

6. IF INDIAN, ALLOTTEE OR TRIBE NAME

7. UNIT AGREEMENT NAME

8. FARM OR LEASE NAME  
 Geronimo

9. WELL NO.  
 2

10. FIELD AND POOL, OR WILDCAT  
 Shugart-Queen *Y-SK-B-G*

11. SEC., T., R., M., OR BLK. AND SURVEY OR AREA  
 Sec. 24: T-18-S, R-31-E

12. COUNTY OR PARISH  
 Eddy

13. STATE  
 New Mexico

PROPOSED CASING AND CEMENTING PROGRAM

SIZE OF HOLE	SIZE OF CASING	WEIGHT PER FOOT	SETTING DEPTH	QUANTITY OF CEMENT
17 1/2"	13 3/8"	48#	350'	400 sxs. Class "C" Circulated
7 7/8"	5 1/2"	15.5#	4500'	400 sxs. Class "C"

Selectively perforate and treat pay zone

Attachments:

- Survey Plat (C-102)
- Supplemental Drilling Data
- Surface Use Plan

*Revised IDI  
 API & NL  
 3-29-85*

IN ABOVE SPACE DESCRIBE PROPOSED PROGRAM: If proposal is to deepen or plug back, give data on present productive zone and proposed new productive zone. If proposal is to drill or deepen directionally, give pertinent data on subsurface locations and measured and true vertical depths. Give blowout preventer program, if any.

24. SIGNED *A. J. Longo* TITLE Vice President DATE March 7, 1985  
 (This space for Federal or State office use)

PERMIT NO. \_\_\_\_\_ APPROVAL DATE \_\_\_\_\_  
 APPROVED BY *L. Mark Sullivan* TITLE CARLSBAD REGIONAL SUPERVISOR DATE 3-20-85  
 CONDITIONS OF APPROVAL, IF ANY: *CS*

APPROVAL SUBJECT TO  
 GENERAL REQUIREMENTS AND  
 SPECIAL STIPULATIONS  
 ATTACHED

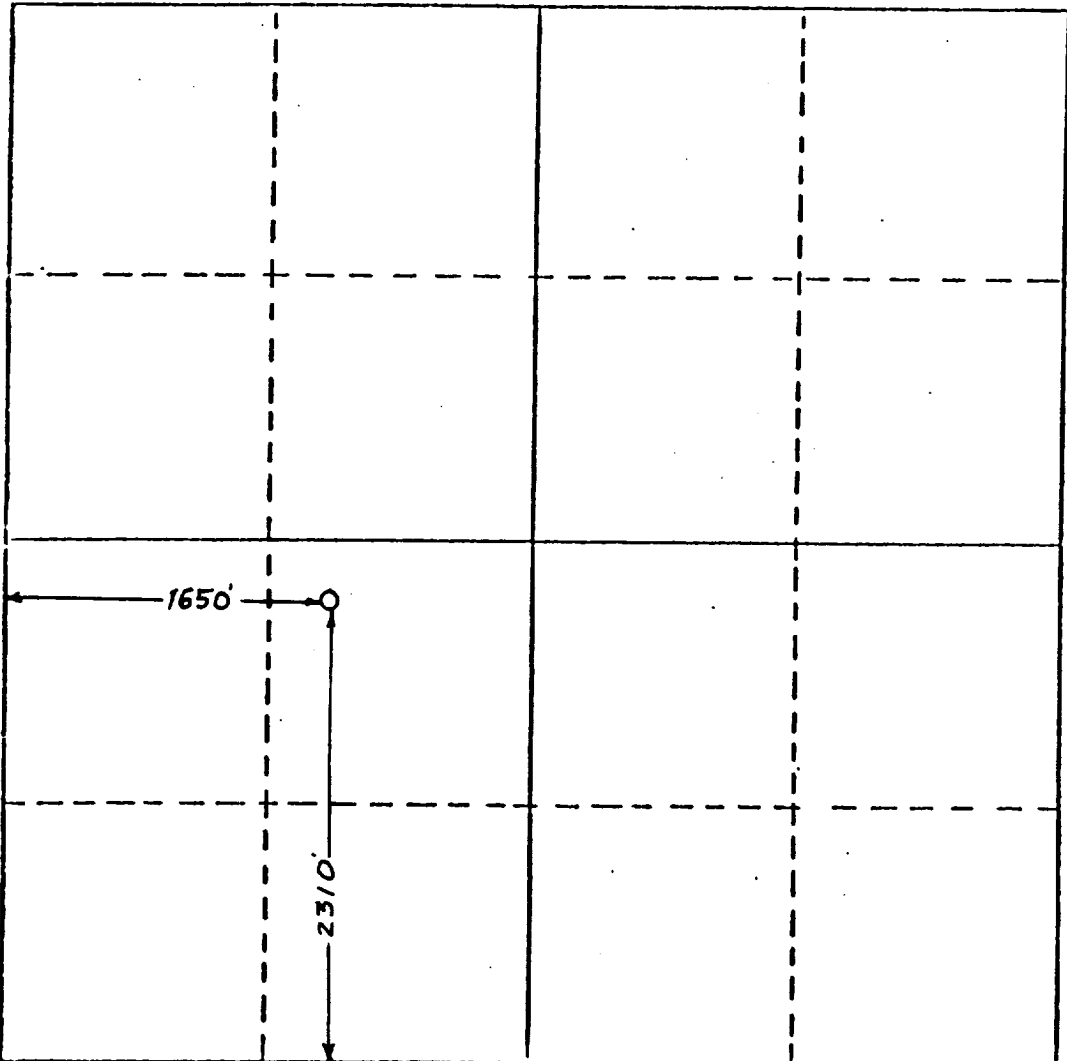
All distances must be from the outer boundaries of the Section.

Operator <b>Siete Oil &amp; Gas Corporation</b>		Lease <b>Geronimo Federal</b>			Well No. <b>2</b>
Unit Letter <b>K</b>	Section <b>24</b>	Township <b>18 South</b>	Range <b>31 East</b>	County <b>Eddy</b>	
Actual Footage Location of Well: <b>2310</b> feet from the <b>South</b> line and <b>1650</b> feet from the <b>West</b> line					
Ground Level Elev. <b>3709</b>	Producing Formation		Pool <i>Shugart Queen</i>	Dedicated Acreage: <b>40</b> Acres	

- Outline the acreage dedicated to the subject well by colored pencil or hachure marks on the plat below.
- If more than one lease is dedicated to the well, outline each and identify the ownership thereof (both as to working interest and royalty).
- If more than one lease of different ownership is dedicated to the well, have the interests of all owners been consolidated by communitization, unitization, force-pooling, etc?  
 Yes  No If answer is "yes," type of consolidation \_\_\_\_\_

If answer is "no," list the owners and tract descriptions which have actually been consolidated. (Use reverse side of this form if necessary.) \_\_\_\_\_

No allowable will be assigned to the well until all interests have been consolidated (by communitization, unitization, forced-pooling, or otherwise) or until a non-standard unit, eliminating such interests, has been approved by the Division.



CERTIFICATION

I hereby certify that the information contained herein is true and complete to the best of my knowledge and belief.

*Bill G. Underwood, Jr.*  
Name  
**Bill G. Underwood, Jr.**

Position  
**President**

Company  
**Siete Oil and Gas Corporation**

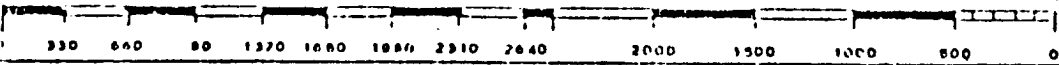
Date  
**3-12-85**

I hereby certify that the well location shown on this plat was plotted from field notes of actual surveys made by me or under my supervision, and that the same is true and correct to the best of my knowledge and belief.

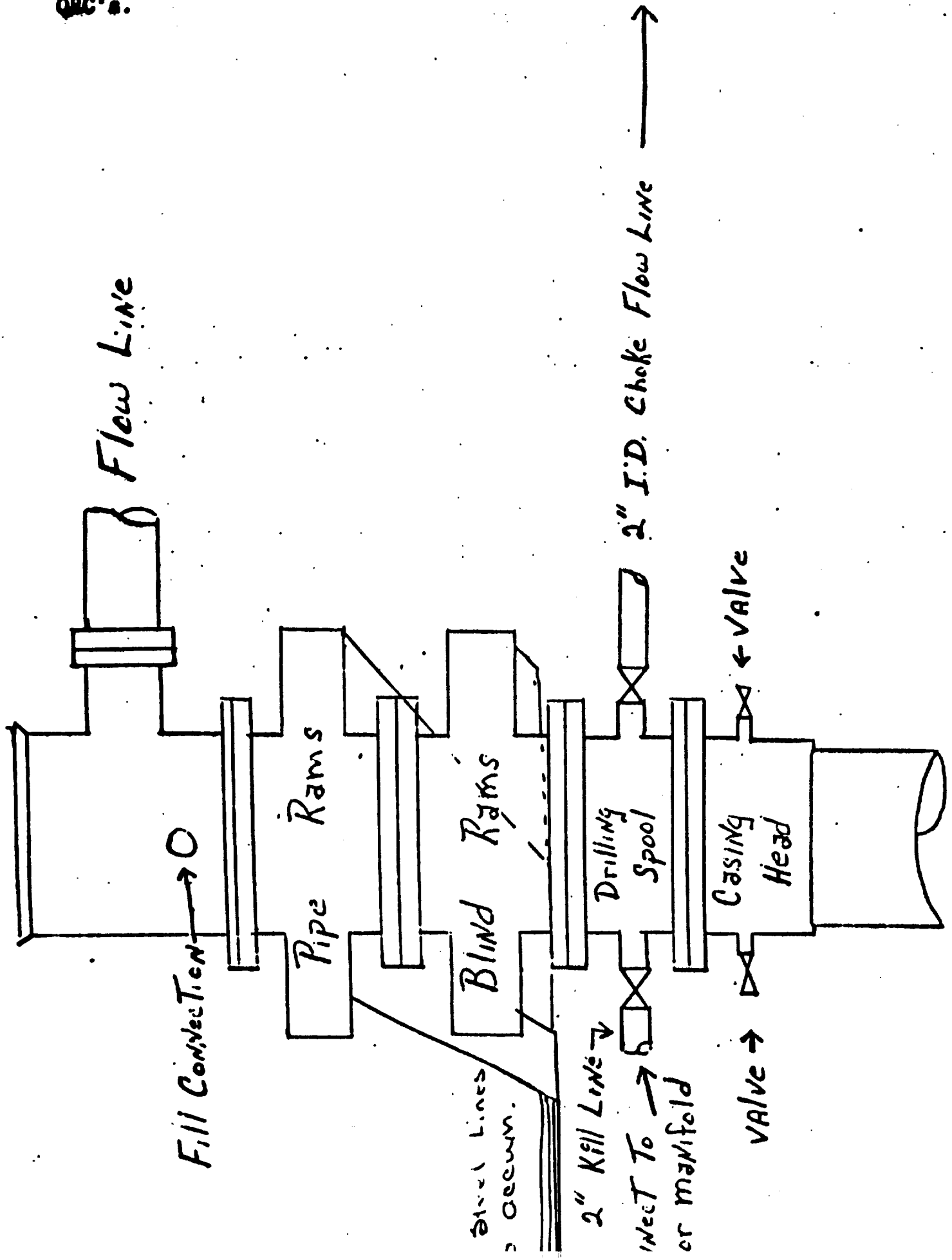
**February 28, 1985**  
Date Surveyed

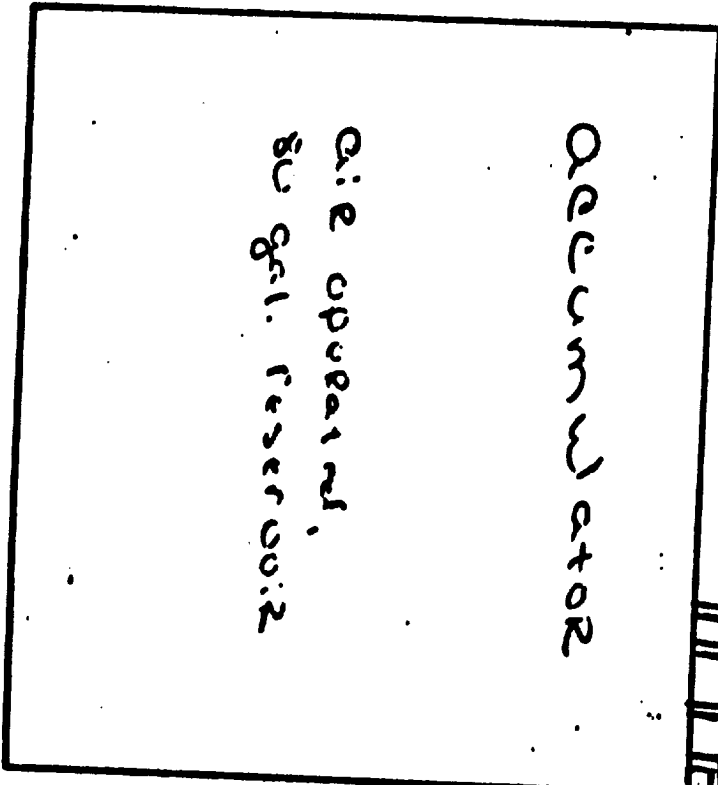
**P. R. Patton**

Registered Professional Land Surveyor and/or Land Surveyor  
**3112**  
8112  
Certificate No.

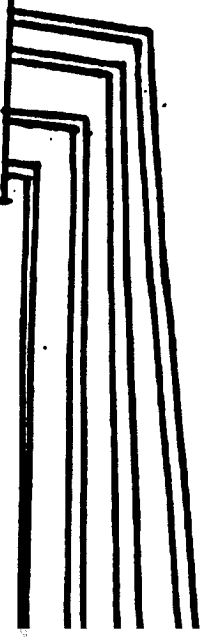


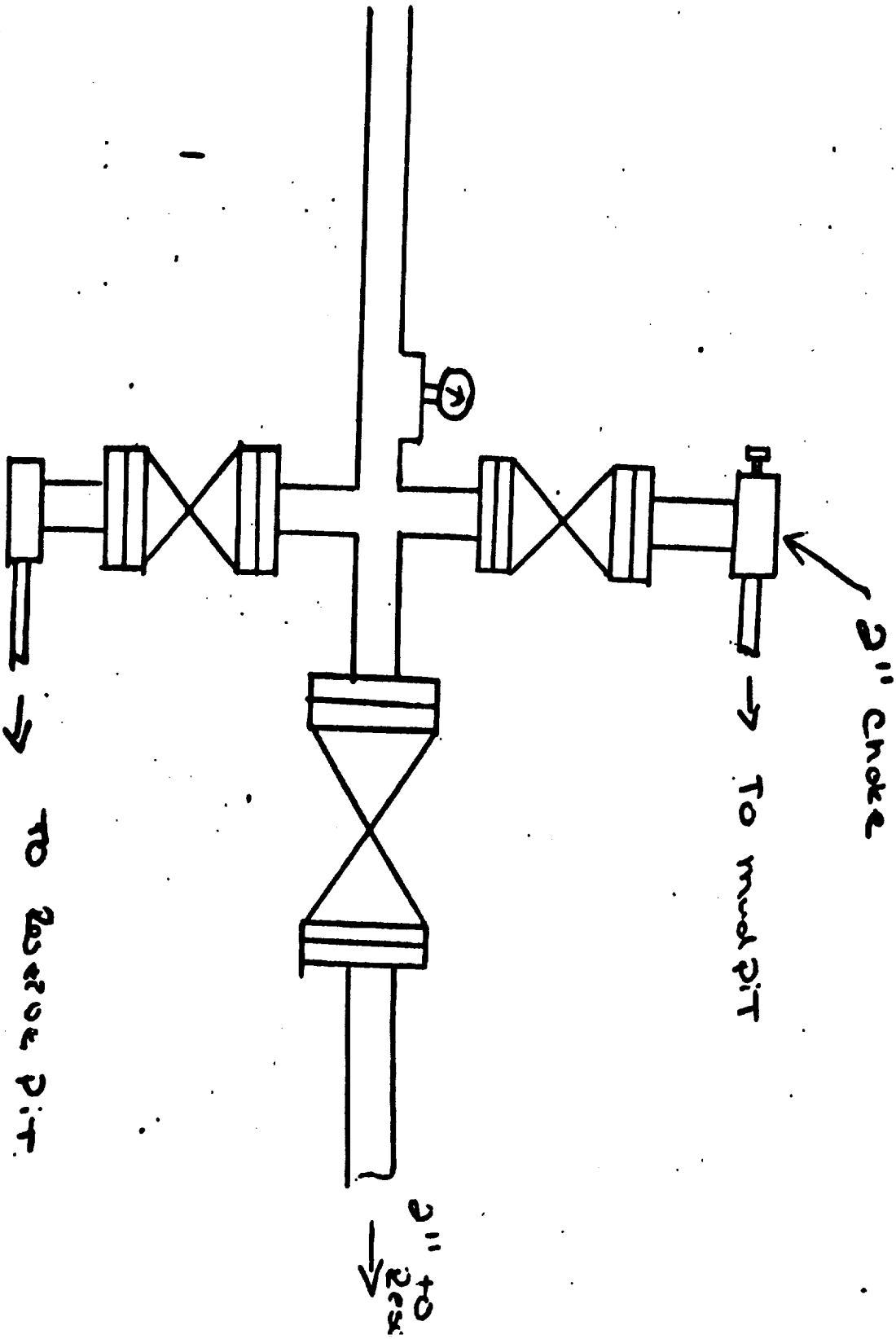
BOP Hookups for large casing.  
Pipe & Blind Rams are hydraulic  
operated, Cameron 10" 5000#  
QBC's.





1" Steel Lines 4  
Pipe Rams 4 Bl:  
Rams





SUPPLEMENTAL DRILLING DATA

SIETE OIL AND GAS CORPORATION

RE: SIETE OIL AND GAS CORPORATION  
 Geronimo Federal #2  
 2310' FSL & 1650' FWL  
 Section 24: T-18-S, R-31-E  
 Eddy County, New Mexico

In conjunction with Form 9-331C, Application to Drill the subject well, Siete Oil and Gas Corporation submits the following ten items of pertinent information in accordance with U.S.G.S. requirements.

1. The geologic surface is Quaternary
2. The estimated tops of geologic markers are as follows:

Rustler Anhydrite	845
Salado	1045
Base Salado	2170
Yates	2450
Seven Rivers	2535
Queen	3505
Grayburg	3930
San Andres	4135
Cherry Canyon	4250

The anticipated depths at which anticipated water, oil or gas are expected to be encountered:

Water:	Approximately 200'
Oil or Gas:	Delaware Approximately 4160' - 4500'

4. The proposed casing program: see Form (9-331C)

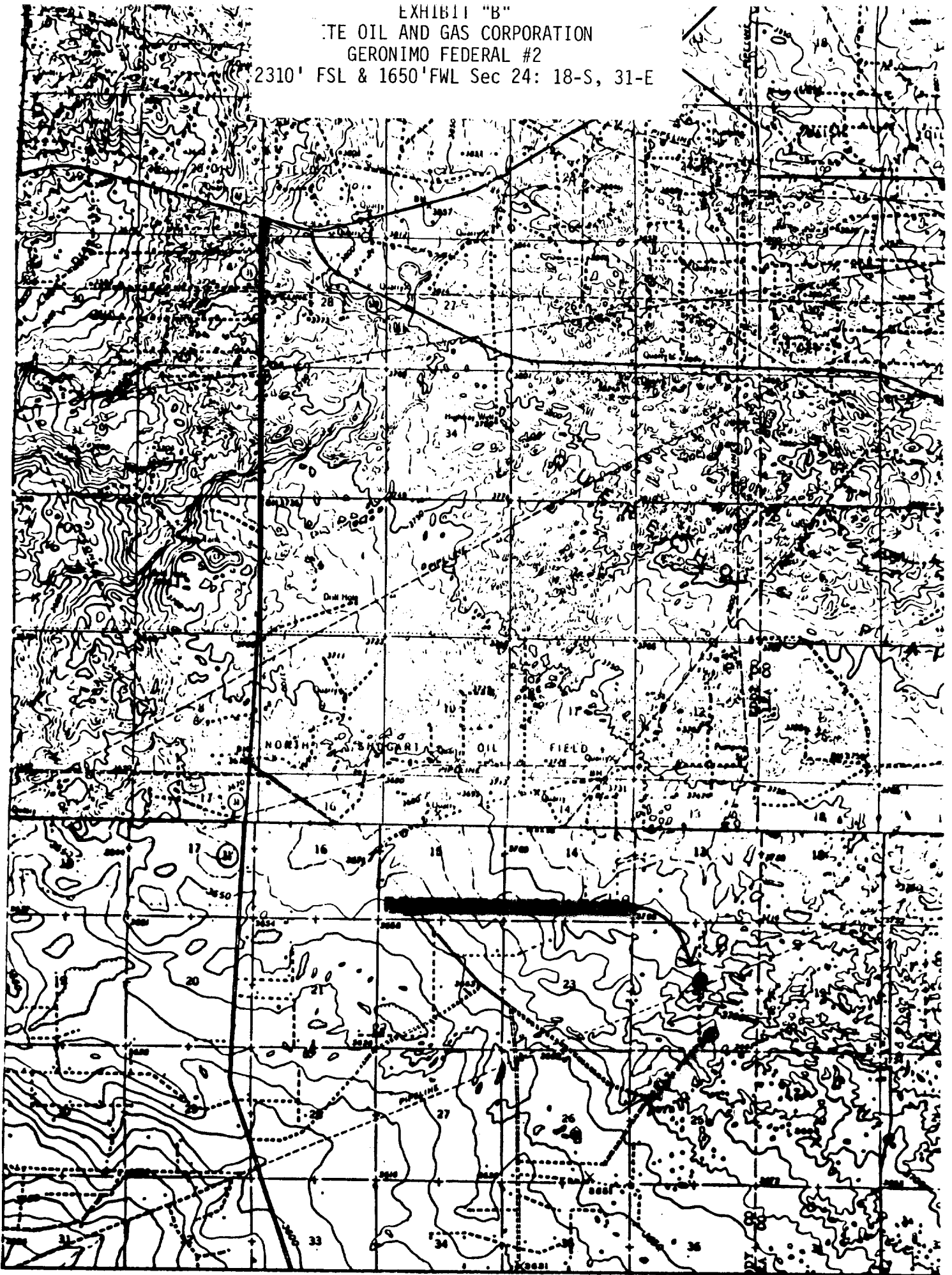
<u>Size</u>	<u>Interval</u>	<u>Weight</u>	<u>Grade</u>	<u>Joint</u>	<u>New or Used</u>
13 3/8"	0-350'	48#	J-55	S.T.&.C.	New
5 1/2"	0-5100'	15.5#	J-55	S.T.&.C.	New

5. Pressure Control Equipment: The blowout preventor will be a two-ram type preventor. A sketch is attached.
6. Mud Program: A copy of the mud program to be used is attached.
7. Auxiliary Equipment: Master valve on blowout preventor.
8. Testing, Logging and Coring Programs:

No drillstem tests or coring is planned.

Logging: Compensated Neutron-Formation Density-Gamma Ray-Caliper-Dual Laterolog-Rxo.

EXHIBIT "B"  
THE OIL AND GAS CORPORATION  
GERONIMO FEDERAL #2  
2310' FSL & 1650' FWL Sec 24: 18-S, 31-E



TOPOGRAPHIC MAP

# Rig 19

## Drilling Site Plat

